



NOTES

Company: BLUERIDGE PETROLEUM CORP.

Lease: DEAN #1-2

Field: BURRTON

Location: NE-NW-SE-NE (1555' FNL & 805' FEL)

Sec: 2 Twsp: 23S Rge: 4W

County: RENO State: Kansas

KB: 1471' GL: 1461'

Contractor: SOUTHWIND DRILLING, INC. (Rig #8)

Spud: 12/04/2019 Comp: 12/14/2019

RTD: 3875' LTD: 3875'

Mud Up: 2200' Type Mud: Chemical

Samples Saved From: 2300' to RTD

Drilling Time Kept From: 2300' to RTD

Samples Examined From: 2300' to RTD

Geological Supervision from: 2340' to RTD

Geologist on Well: Wyatt Urban (2300-3590') & Jim Musgrove (3590'- RTD)

Surface Casing: 8 5/8"@ 760'

Electronic Surveys: Logged by Pioneer Energy Services, DIL/BHCS, CNL/CDL, MEL



Company: **BlueRidge
Petroleum Corporation**
Lease: **Dean #1-2**

SEC: 2 TWN: 23S RNG: 4W
County: RENO
State: Kansas
Drilling Contractor: Southwind Drilling, Inc - Rig 1
Elevation: 1461 GL
Field Name: Burrton
Pool: Infield
Job Number: 417
API #: 15-155-21768

Operation:
Uploading recovery & pressures

DATE
December
11
2019

DST #1 Formation: Miss Test Interval: 3298 - 3332' Total Depth: 3332'
Time On: 12:04 12/11 Time Off: 18:19 12/11
Time On Bottom: 13:46 12/11 Time Off Bottom: 16:16 12/11

Recovered

Foot	BELS	Description of Fluid	Gas %	Oil %	Water %	Mud %
116	1.65068	G	100	0	0	0
73	1.03879	HGM	0	0	0	100
126	1.79298	SLOCHWCM	0	1	44	55
63	0.89649	SLGCSLMCW	0	1	89	10

Total Recovered: 378 ft
Total Barrels Recovered: 5.37894

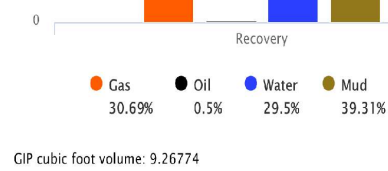
Reversed Out
NO

Recovery at a glance



Initial Hydrostatic Pressure 1638 PSI
Initial Flow 24 to 54 PSI
Initial Closed in Pressure 776 PSI

Final Flow Pressure 59 to 134 PSI
 Final Closed in Pressure 788 PSI
 Final Hydrostatic Pressure 1620 PSI
 Temperature 111 °F
 Pressure Change Initial Close / Final Close 0.0 %



Company: BlueRidge Petroleum Corporation
Lease: Dean #1-2

SEC: 2 TWN: 23S RNG: 4W
 County: RENO
 State: Kansas
 Drilling Contractor: Southwind Drilling, Inc - Rig 1
 Elevation: 1461 GL
 Field Name: Burrton
 Pool: Infield
 Job Number: 417
 API #: 15-155-21768

Operation:
 Uploading recovery & pressures

DATE
 December
12
 2019

DST #2 Formation: Hunton Test Interval: 3614 - 3622' Total Depth: 3622'
 Time On: 18:19 12/12 Time Off: 23:52 12/12
 Time On Bottom: 19:44 12/12 Time Off Bottom: 21:59 12/12

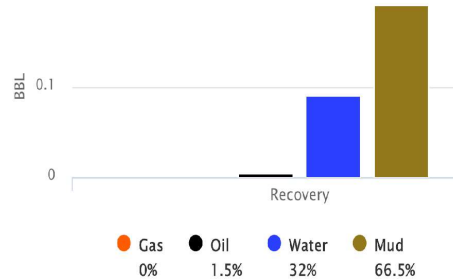
Recovered

Foot	BBLs	Description of Fluid	Gas %	Oil %	Water %	Mud %
18	0.25614	HWCM	0	0	30	70
2	0.02846	SLOCHMCW	0	15	50	35

Total Recovered: 20 ft
 Total Barrels Recovered: 0.2846

Reversed Out
 NO

Recovery at a glance



Initial Hydrostatic Pressure 1760 PSI
 Initial Flow 10 to 15 PSI
Initial Closed in Pressure 888 PSI
 Final Flow Pressure 17 to 24 PSI
Final Closed in Pressure 832 PSI
 Final Hydrostatic Pressure 1754 PSI
 Temperature 109 °F
 Pressure Change Initial Close / Final Close 6.3 %

GIP cubic foot volume: 0

12/13/2019



Company: BlueRidge Petroleum Corporation
Lease: Dean #1-2

SEC: 2 TWN: 23S RNG: 4W
 County: RENO
 State: Kansas
 Drilling Contractor: Southwind Drilling, Inc - Rig 1
 Elevation: 1461 GL
 Field Name: Burrton
 Pool: Infield
 Job Number: 417
 API #: 15-155-21768

Operation:
 Uploading recovery & pressures

DATE
 December
13
 2019

DST #3 Formation: Hunton Test Interval: 3619 - 3627' Total Depth: 3627'
 Time On: 05:48 12/13 Time Off: 11:49 12/13
 Time On Bottom: 07:09 12/13 Time Off Bottom: 09:39 12/13

Recovered

Foot	BBLs	Description of Fluid	Gas %	Oil %	Water %	Mud %
5	0.07115	G	100	0	0	0
58	0.82534	HWCM	0	0	30	70
189	2.68947	SLMCW	0	0	95	5
126	1.79298	W	0	0	100	0

Total Recovered: 378 ft
 Total Barrels Recovered: 5.37894

Reversed Out
 NO

Recovery at a glance



Initial Hydrostatic Pressure 1738 PSI
 Initial Flow 12 to 89 PSI
Initial Closed in Pressure 968 PSI
 Final Flow Pressure 92 to 183 PSI

Final Closed in Pressure 963 PSI
 Final Hydrostatic Pressure 1734 PSI
 Temperature 118 °F
 Pressure Change Initial 0.5 %
 Close / Final Close

Recovery
 Gas 1.32% Oil 0% Water 85.44% Mud 13.24%
 GIP cubic foot volume: 0.39947

12/14/2019

DST #4 for - Diamond Testing, LLC



Company: BlueRidge
 Petroleum Corporation
 Lease: Dean #1-2

SEC: 2 TWN: 23S RNG: 4W
 County: RENO
 State: Kansas
 Drilling Contractor: Southwind Drilling,
 Inc - Rig 1
 Elevation: 1461 GL
 Field Name: Burrton
 Pool: Infield
 Job Number: 417
 API #: 15-155-21768

Operation:
 Uploading recovery &
 pressures

DATE
 December
 14
 2019

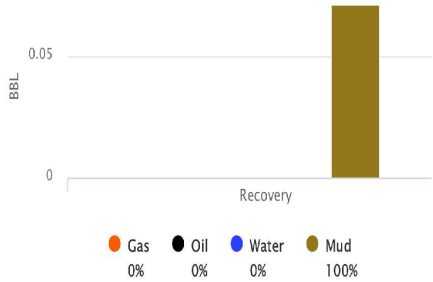
DST #4 Formation: Simpson Test Interval: 3748 - 3764'
 Total Depth: 3764'
 Time On: 02:06 12/14 Time Off: 07:21 12/14
 Time On Bottom: 03:44 12/14 Time Off Bottom: 05:44 12/14

Recovered		Description of Fluid	Gas %	Oil %	Water %	Mud %
Foot	BBLs					
5	0.07115	M	0	0	0	100

Total Recovered: 5 ft
 Total Barrels Recovered: 0.07115

Reversed Out
 NO

Recovery at a glance



Initial Hydrostatic Pressure 1763 PSI
 Initial Flow 7 to 11 PSI
Initial Closed in Pressure 1077 PSI
 Final Flow Pressure 11 to 12 PSI
Final Closed in Pressure 1005 PSI
 Final Hydrostatic Pressure 1763 PSI
 Temperature 108 °F
 Pressure Change Initial 6.7 %
 Close / Final Close

GIP cubic foot volume: 0



Company: BlueRidge
 Petroleum Corporation
 Lease: Dean #1-2

SEC: 2 TWN: 23S RNG: 4W
 County: RENO
 State: Kansas
 Drilling Contractor: Southwind Drilling,
 Inc - Rig 1
 Elevation: 1461 GL
 Field Name: Burrton
 Pool: Infield
 Job Number: 417
 API #: 15-155-21768

Operation:
 Uploading recovery &
 pressures

DATE
 December
 15
 2019

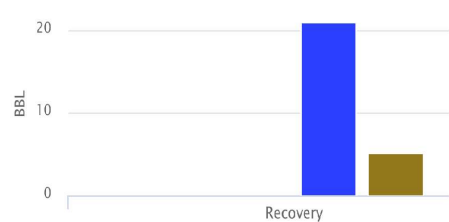
DST #5 Formation: Simpson Test Interval: 3769 - 3780'
 Total Depth: 3876'
 Time On: 02:32 12/15 Time Off: 08:47 12/15
 Time On Bottom: 04:09 12/15 Time Off Bottom: 05:54 12/15

Recovered		Description of Fluid	Gas %	Oil %	Water %	Mud %
Foot	BBLs					
493	7.01539	HWCM	0	0	30	70
1332	18.95436	SLMCW	0	0	99	1

Total Recovered: 1825 ft
 Total Barrels Recovered: 25.96975

Reversed Out
 NO

Recovery at a glance



Initial Hydrostatic Pressure 1786 PSI
 Initial Flow 88 to 426 PSI
Initial Closed in Pressure 1202 PSI
 Final Flow Pressure 457 to 824 PSI
Final Closed in Pressure 1212 PSI
 Final Hydrostatic Pressure 1785 PSI

Temperature 121 °F
 Pressure Change Initial 0.0 %
 Close / Final Close
 GIP cubic foot volume: 0

ROCK TYPES

Cht	sdymst	shale, gry	Ss
Cht vari	Lmst fw<7	Carbon Sh	
Dolprim	Lmst fw>7	Shcol	

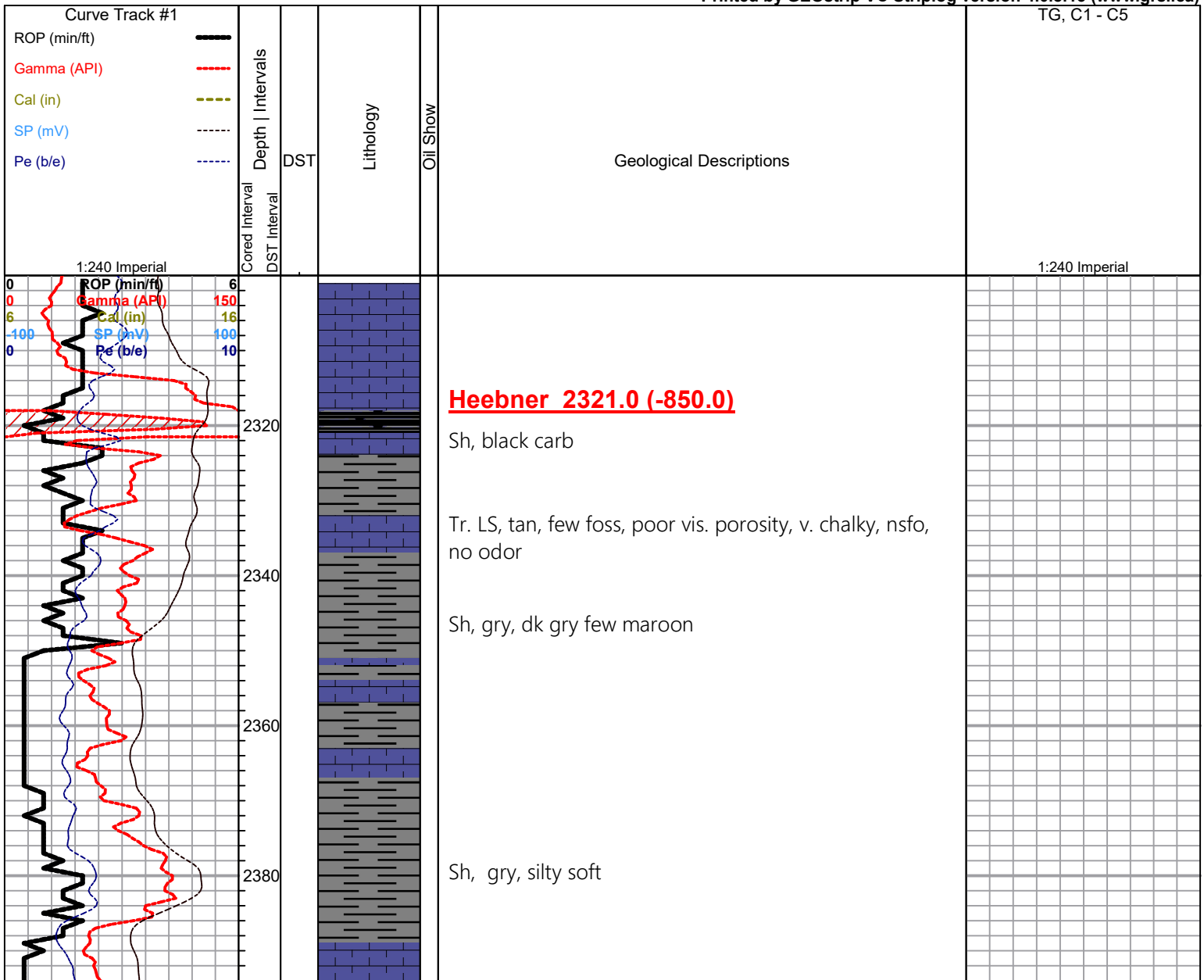
ACCESSORIES

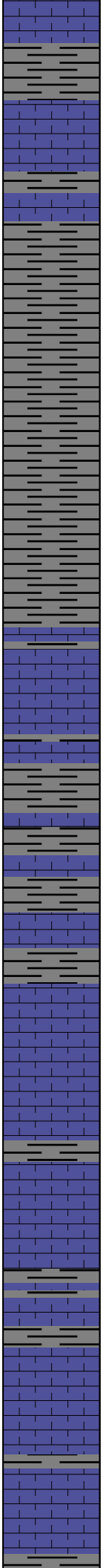
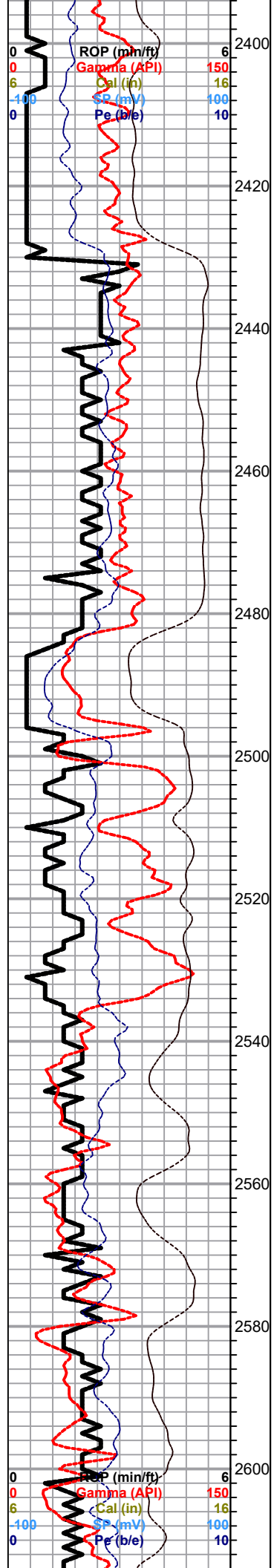
FOSSIL
 Oomoldic

OTHER SYMBOLS

Oil Show	DST
● Good Show	■ DST Int
● Fair Show	■ DST alt
● Poor Show	■ Core
○ Spotted or Trace	■ tail pipe
○ Questionable Stn	
D Dead Oil Stn	
■ Fluorescence	
* Gas	

Printed by GEOstrip VC Striplog version 4.0.8.15 (www.grsi.ca)





Abd. gry silty sh. soft,
Tr. sd.poorly devp. , no shows, no odor

Abd. dark gry sh

Tr. LS, brn, tan,f- xln, ft. odor

Sh , gry, dkry,

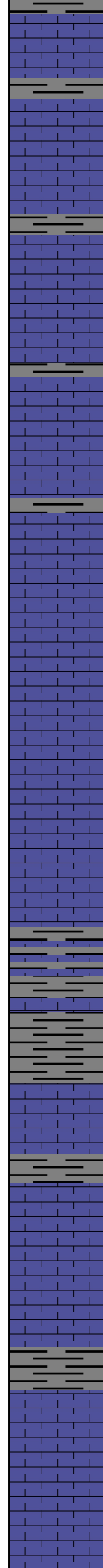
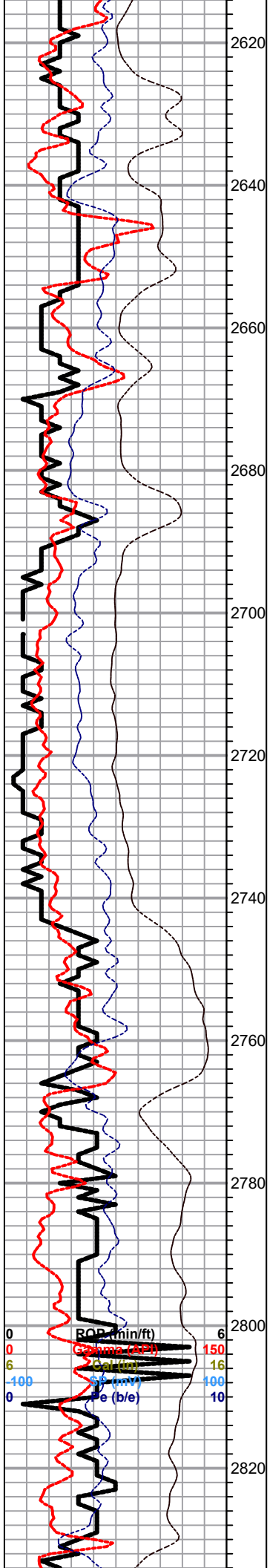
Lansing 2535.0 (-1064.0)

LS, brn tan, f-xln, dense, no shows , nsfo

LS, a/a, poor vis. porosity, no shows , no odor

LS, tan, buff, foss, fair scattered p.p. por., chalky, no shows

LS, tan, buff, foss, v. chalky, no shows



LS, tan, buff, foss, poorly developed, no shows

LS, tan, buff, foss, fair p.p. por., slightly chalky no shows
, no odor

Dk gry silty sh.

LS, tan, buff, foss, no sfo, no odor

LS, tan, foss/ micro ool, fair porosity, chalky, no shows

LS, cream, tan, oom , good / fair vuggy oom porosity,
chalky, no shows

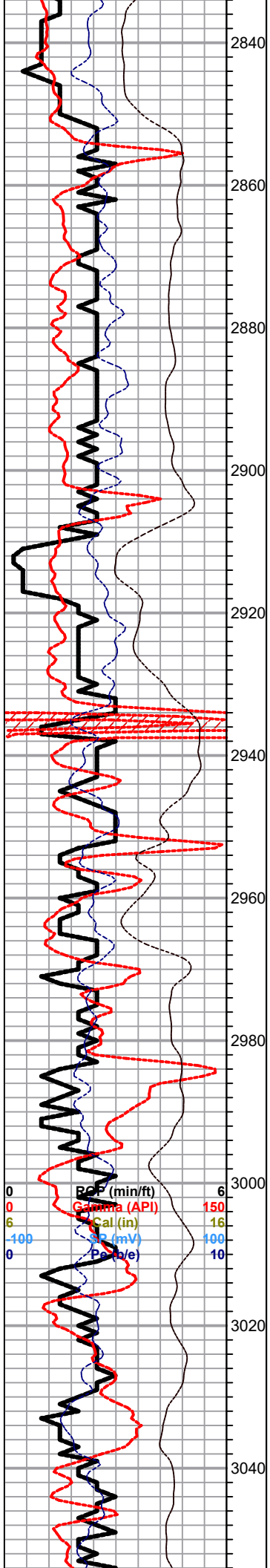
LS, tan, crm, fxl, dense, poor vis. porosity, no shows

LS, tan, foss, poorly developed por., sl. chalky, no shows

slug gry silty sh

LS, white, tan, good vuggy por, no shows

ROP (thin/ft) 6
Gamma (API) 150
Sp (ppm) 16
Pe (b/e) 100
0 100 0



0 RFP (min/ft) 6
 0 Gamma (API) 150
 6 Cal (in) 16
 -100 SR (mV) 100
 0 Po (e) 10

LS, tan, ool, good vuggy type por., no shows

LS, tan, buff, foss, poor por., nsfo, dense, - cherty in pts.

LS, tan, poor porosity, chalky, no shows,

Tr. aqua green sh. LS, tan, dol, fair inxln por, no shows

LS, tan, dol., fair inxln por. , nsfo, no odor

LS, tan, oom, good vuggy porosity, sl. chalky, no shows, no odor

Sh, black carb

○ LS, tan, crm, foss, poor vis. p.p. porosity, tr. brn stain , nsfo, no odor

Dk gry silty sh.

Tr. LS, tan, fxl, dense, cherty poor vis. por. blk sh.

Sh, gry, silty

BKC 2983.0 (-1512.0)

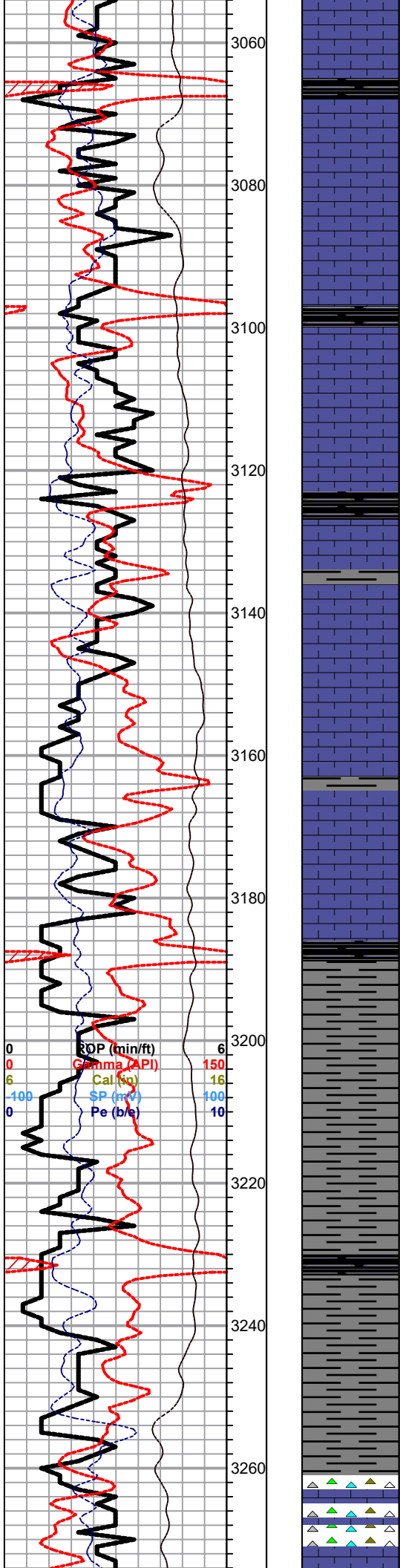
Sh, gry, dk, gry blk

LS, white, crm, ool, poor vis. porosity, no shows, no odor

Abd. dk gry sh, silty,
tr. LS, tan ,buff, ool/foss, poor-fair scattered p.p. porosity, sl. chalky

Sh, dk gry, + Tr. LS, tan, fxl, dense, cherty

Tr. LS, tan, buff, few foss, dense, poor vis. porosity no



Tr. LS, tan, buff, few foss, dense, poor vis. porosity no shows

3060

Slug black sh.

3080

LS, tan, buff, few foss, sl. dol, tr. brn -lt. brn stain nsfo, no odor

3100

Dk, blk sh, few soft gry sh.
Tr. LS, gry, fxl, dense, mottled, no shows, no odor

3120

Cherokee 3121.0 (-1650.0)
Sh, dk green, blk

3140

Sh, aqua green, sh. maroon, brick red <blocky sh>

3160

Sh, black carb

3180

Tr. sd. tan, v. fine grain, poor vis. porosity, friable , tr. dk brn- blk flakey stain nsfo, no odor

3200

Sh, black carb

3220

Tr. Sh, dk gry, silty soft

3240

Sh, a/a

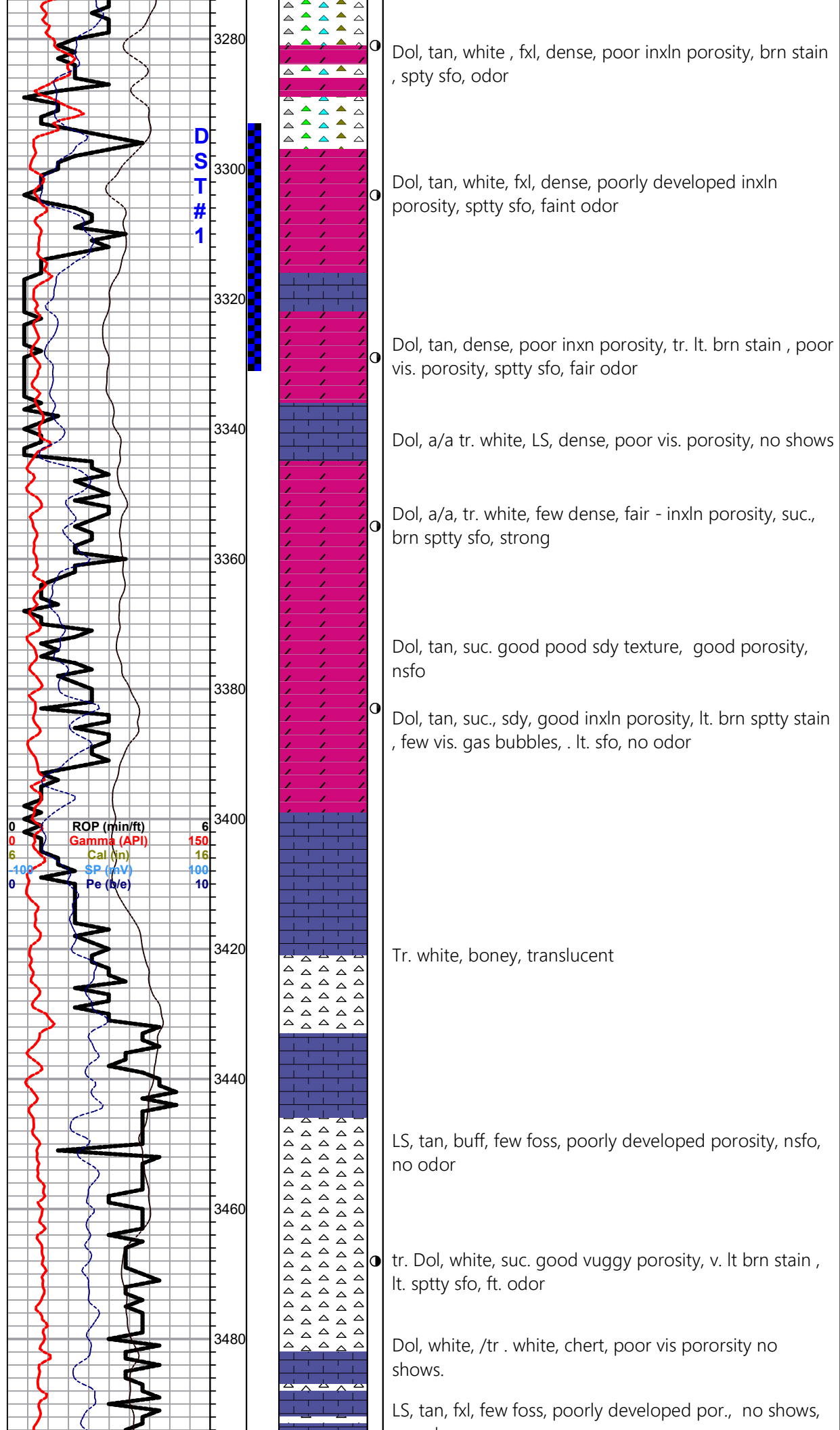
Slug black carb

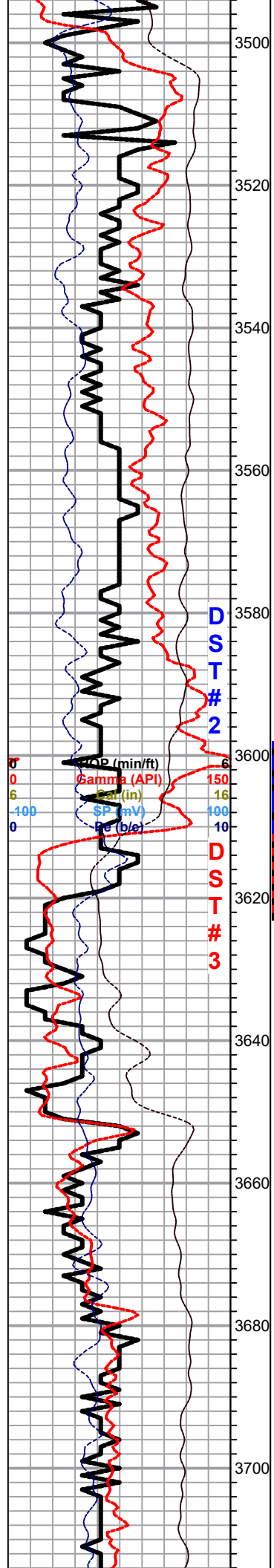
3260

Sh, maroon, dk gry, silty soft

MISS. 3256.0 (-1785.0)
Abd., maroon, soft red sh. samp. Chert white trans., orange, nsfo , no odor Tr. LS, white, yellow, crumbly poor vis. porosity , chalky, no shows,

ROP (min/ft) 6
Gamma (API) 150
Cal (ppm) 16
SP (mv) 100
Pe (b/s) 10





Kinderhook 3498.0 (-2027.0)

no odor

Sh, gry, dk gry, waxey

Sh, a/a, inc, sdy- dolomitic sh.,

Misner Sd. 3607.0 (-2136.0)

Sd. , qtz, white/ clr., sub rounded , med grain, glauc, in pt, friable, no stain , nsfo, ??? odor

Hunton 3612.0 (-2141.0)

Dol, tan, fxl, suc., glauc., in pt, fair p.p. inxln porosity, fair - good stain , sfo, good odor

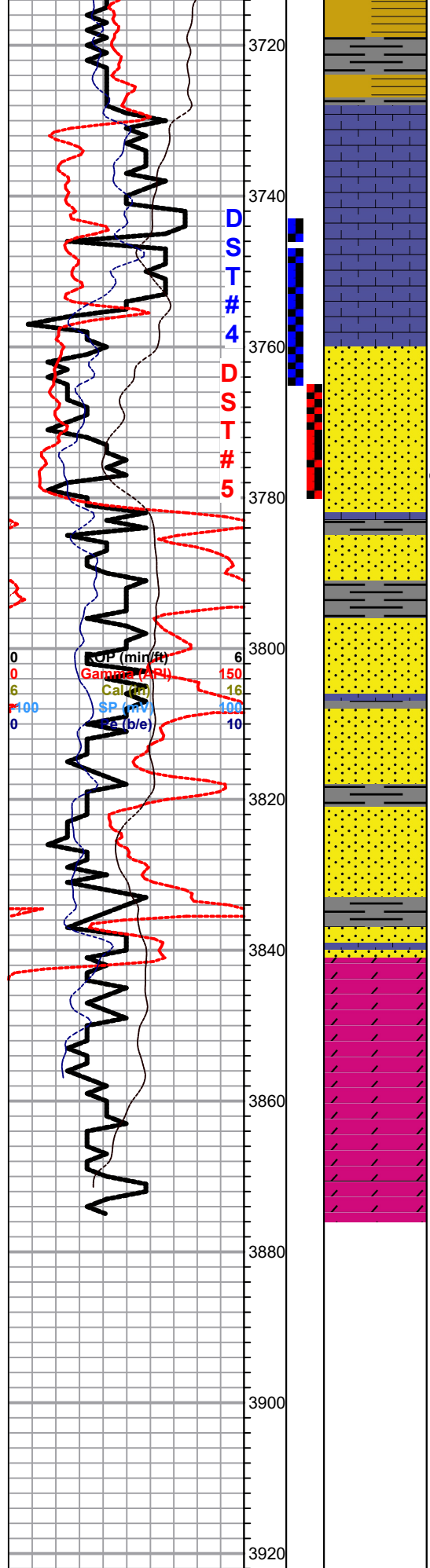
Dol, tan, gry, tan, suc., good p.p vuggy porosity, brn-golden brn stain , sfo, odor (few cal. few sdy, tr. pryite)

Dol, gry, white, suc., highly sandy, poor fair porosity, tr. stain , nsfo, ??? odor

Sh, maroon, gry ,dolomitic.

Sh, gry, dk gry/ yellow, dolomitic

Sh, a/a



Viola 3731.0 (-2260.0)

LS, gry, white, med xln , chalky, calcite inclusions

LS, a/a, slightly cherty

Simpson Sd 3754.0 (-2283.0)

Sd. white, clr qtz, rounded/ friable , fair porositytr. blk dead stain ,nsfo, ??? odor / dolomitic

Sd. white, clr, quartz, friable, fair inner gran . porosity, brn stain , sfo, faint odor

Tr. sd. a/a, fraible, fair porosity, sptty stain , sfo, fair odor
olive green, green/ maroon, sub waxey sh.

Sd, a/a

Sh, maroon, gry, green / maroon,

Sd., white, clr , qtz, rounded, fraible fair ingran. porosity, tr. blk gry sh, inclusions

Arbuckle 3838.0 (-2367.0)

Dol, tan, med xln, fair inxln por. sl. cherty, ??? stain, nsfo, ft. odor

Dol, white, gry, f- med xln, slightly, cherty, + tan, / white, chert , & white chalk

LTD 3875.0 (-2404.0)

RTD 3875.0 (-2404.0)

3940