

Samuel Taylor / Jose martinez



Liberal Yard #1717 - Phone 620-624-2277 - 1700 S. Country Estates Road, Liberal KS 67901

PRESSURE PUMPING

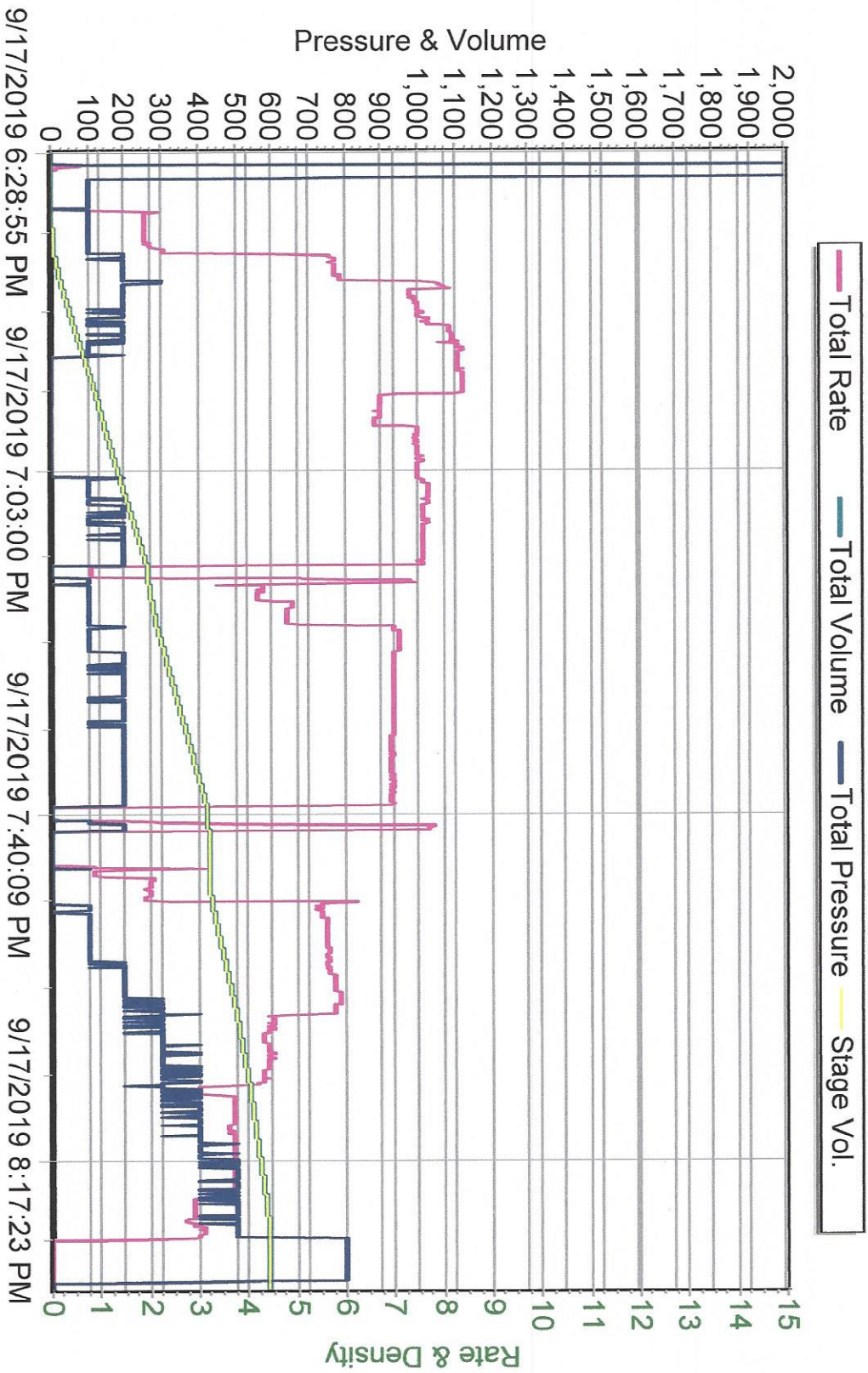
Job Log

Customer:	Merit Energy	Cement Pump No.:	37223 19572 15HRS	Operator TRK No.:	78868
Address:	gardencity.invoices@meritenergy.com	Ticket #:	1718 19692 L	Bulk TRK No.:	30463 14284 Oscar 38119 19578 Sam
City, State, Zip:	PO Box 250 Holcomb, Ks 67851	Job Type:	Z-42 Cement Surface Casing		
Service District:	1718-Liberal KS	Well Type:	OIL		
Well Name and No.:	Black Knight #28-1 AFE# 64322	Well Location:	28-27S-33W	County:	Haskell
				State:	Kansas

Type of Cmt		Sacks	Additives				Truck Loaded On			
A-Con Blend		500	3%Calcium Chloride, 1/2#Celloflake, 1#Gilonite				30463 14284 Oscar		Front	Back
Class C Cement		165	2% Calcium Chloride, 1/4# Celloflake				38119 19578 Sam		Front	Back
									Front	Back
Lead/Tail:		Weight #1 Gal.	Cu/Ft/sk		Water Requirements		CU. FT.	Man Hours / Personnel		
Lead:		12.1	2.41		13.9		1205	TT Man Hours:	66	
Tail:		14.8	1.34		6.33		221.1	# of Men on Job:	4	
Time (am/pm)	(BPM)	Volume (BBLS)	Pumps		Pressure(PSI)		Description of Operation and Materials			
			T	C	Tubing	Casing				
14:45pm							Arrived at location			
17:00pm							Spot trucks/Rig up			
18:00pm							Safety meeting			
18:30pm						1500	Pressure test lines to 1500psi			
18:33pm	2	10				100	Pump 10bbls of fresh water spacer			
18:39pm	6	214				180	Pump 214bbls of lead from 500sks at 12.1lbs			
19:28pm	6	39				150	Pump 39bbls of tail from 165sks at 14.8lbs			
19:40pm							Shut down/Drop plug/Wash pump and lines			
19:44pm							Start displacement of bbls with fresh water			
19:53pm	6	20				50	20bbls gone			
19:58pm	6	40				200	40bbls gone			
20:04pm	4.5	60				250	60bbls gone			
20:12pm	4	80				390	80bbls gone			
20:20pm	4	99				470	99bbls gone/Slow down rate			
20:24pm	3	109				850	Bump plug/Hold for 5 minutes			
20:29pm							Release pressure to check if float holds			
							Got 70 bbls of cement to Surface			
							Rig down			
							Job completed			
							Thanked company man and rig crew			
Size Hole	12 1/4	Depth	1777				TYPE	Float Collar		
Size & Wt. Csg.	8 5/8 24#	Depth	1767	New / Used			Float collar	1442	Depth	
Landing Psi	500+	Depth					Retainer		Depth	
Shoe Joint	41.66	Type					Perfs		CIBP	

Customer Signature:	Basic Representative:	Victor A. Corona
	Basic Signature:	<i>Victor A. Corona</i>
	Date of Service:	9/17/2019

Merit Energy
Black Knight 28-1
8 5/8 Surface
9/17/2019



Pumping Order / Mixture

Client: Merit Energy
Date: 9/17/2019
Job: 8 5/8 Surface

Well Name & No: Black Knight 28-1
Location Supervisor: Victor A. Corona
COMPANY REP. Rodney Gonzales

Differential Pressure 1442 psi
Lift Pressure: 500 psi

Recipe

Pressure Test PSI: 1500

MAX PSI: 500

10	BBLS OF FRESH WATER SPACER		
214	BBLS LEAD SLURRY YIELD 2.41	12.1LBS	500SKS 13.9G/SK
39	BBLS TAIL SLURRY YIELD 1.34	14.8LBS	165SKS 6.33G/SK

DROP PLUG/WASH PUMP ON TOP OF PLUG

109.0 BBLS OF DISPLACEMENT
99.0 BBLS @ 5 BPM
10.0 BBLS AT 2-3 BPM TO BUMP PLUG

DISP PLUG WITH 109 BBLS OF H2O

Cement Callsheet



Company	Merit Energy		Service Point	Liberal, Kansas	
			Contact Person	Tyce Davis	Ph # 620-388-3779
Well Type		Contractor	Duke 9	County	Haskell
Lease	Black Knight		Well # 28-1	Sec 28	Twp 27S
				State	Kansas
				Range	33W

Directions:

Sublette: Jct 83 & 56; North on 83 to CR 50; West on CR 50 to CR II; 0.5 miles south; East and south to rig

Job Type	Surface		Casing Size	8 5/8	Thread	8 Rnd	Weight	24
Equipment	1 Pump Truck 2 Bulk Trucks		Tubing/Drill Pipe Size		Thread		Weight	
			Hole Size	12 1/4	Packer		Bridge Plug	
AFE #:	64322		Plug Container	Yes	Squeeze Manifold		Field Bin	

Surface: 8 5/8 FE On Location;

CEMENT DATA

LEAD 1	Weight PPG	Type	Additives	
BC118	12.1	A-Con Cement	3% Calcium Chloride, 1/2# Celloflake, 1# Gilsonite	
Sacks	Excess	Yield Ft/sk	Water Gal/sk	
500	130%	2.41	13.90	
TAIL 1	Weight PPG	Type	Additives	
BC101	14.80	Class C Cement	2% Calcium Chloride, 1/4 # Celloflake	
Sacks	Excess	Yield Ft/sk	Water Gal/sk	
165		1.34	6.33	
LEAD 2	Weight PPG	Type	Additives	
Sacks	Excess	Yield Ft/sk	Water Gal/sk	
TAIL 2	Weight PPG	Type	Additives	
Sacks	Excess	Yield Ft/sk	Water Gal/sk	
Mouse/Rat	Weight PPG	Type	Additives	
Sacks	Excess	Yield Ft/sk	Water Gal/sk	
Plugs	Weight PPG	Type	Additives	
Sacks	Excess	Yield Ft/sk	Water Gal/sk	

Float Equipment

Part #	Quantity	Description	# Used	# Returned
CF253	1	Guide Shoe - Regular, 8 5/8" (Blue)		
CF1294	1	Accu-Seal Float Collar 8 5/8"		
CF1753	6	Centralizer, 8 5/8" (Blue)		
CF105	1	Top Rubber Cement Plug, 8 5/8"		

Misc. Chemicals

CC131	100	Sugar		

Ordered By	Luke Lau	Phone 972-628-1680	Fax	Date of Job
Call Taken By	Max Ball	Phone 620-675-5025	Email	Time Ready
Operator or Driver Called				Call Out Time

DATE

9-16-2009

COMPANY

LEASE

Merit

Black Knight

Well # 28-1

DIRECTIONS

38119-19578

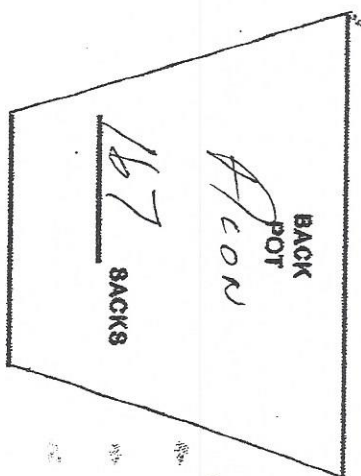
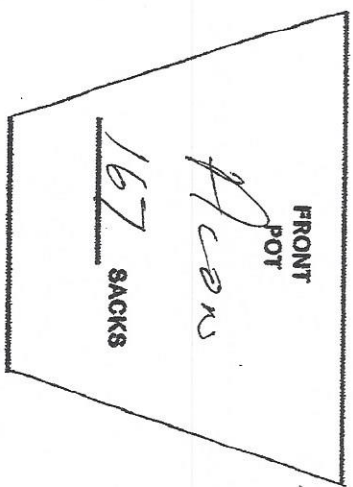
F-B

165

166

Tail

Acorn



30463

14284

Hours to Load Truck
