



Liberal Yard #1717 - Phone 620-624-2277 - 1700 S. Country Estates Road, Liberal KS 67901

PRESSURE PUMPING Job Log

Customer:	Merit Energy	Cement Pump No.:	37223 19572 17HRS	Operator TRK No.:	78868	
Address:	sublette.invoices@meritenergy.com	Ticket #:	1718 19695 L	Bulk TRK No.:	14355 37724 Angel	14354 19808 Sam
City, State, Zip:	PO Box L, Sublette, Ks. 67877	Job Type:	Z-42 Cement Surface Casing			
Service District:	1718-Liberal KS	Well Type:	OIL			
Well Name and No.:	Lester # 1	Well Location:	33-27S-34W	County:	Haskell	State: Kansas

Type of Cmt	Sacks	Additives	Truck Loaded On		
A-Con Cement	505	3% Calcium Chloride, 1/2# Celloflake, 1# Gilsonite	14355 37724 Angel	Front	Back
Class C Cement	165	2% Calcium Chloride, 1/4# Celloflake	14354 19808 Sam	Front	Back
				Front	Back

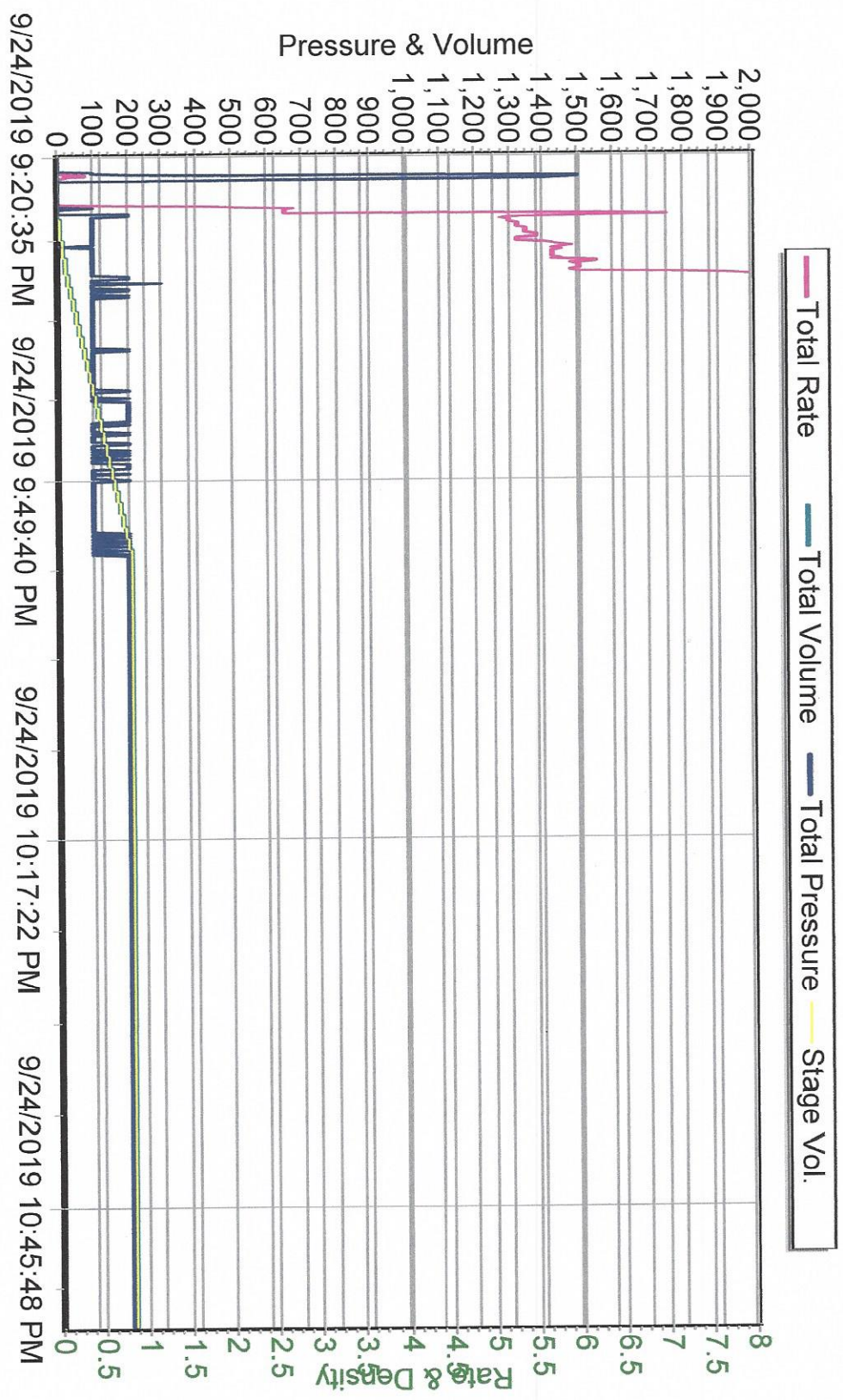
Lead/Tail:	Weight #1 Gal.	Cu/Ft/sk	Water Requirements	CU. FT.	Man Hours / Personnel	
Lead:	12.1	2.41	13.9	1217.05	TT Man Hours:	57
Tail:	14.8	1.34	6.33	221.1	# of Men on Job:	3

Time (am/pm)	(BPM)	Volume (BBLS)	Pumps		Pressure(Psi)		Description of Operation and Materials
			T	C	Tubing	Casing	
17:00pm							Arrived at location
17:45pm							Spot trucks/Rig up
21:00pm							Safety meeting
21:25pm						1500	Pressure test lines to 1500psi
21:26pm	3	10				40	Pump 10bbls of fresh water spacer
21:30pm	6	216				50	Pump 216bbls of lead from 505sks at 12.1lbs
22:17pm	6	39				20	Pump 39bbls of tail from 165sks at 14.8lbs
22:28pm							Shut down/Drop plug/Wash pump and lines
22:29pm							Start displacement of 109bbls with fresh water
22:34pm	6	20				100	20bbls gone
22:37pm	6	40				200	40bbls gone
22:40pm	6	60				300	60bbls gone
22:44pm	6	80				4200	80bbls gone
22:47pm	6	99				550	99bbls gone/Slow down rate
22:50pm	3	109				1100	Bump plug/Hold for 2 minutes
22:52pm							Release pressure to check if float holds
							Got 100 bbls of cement to surface
							Rig down
							Job completed
							Thanked company man and rig crew

Size Hole	12 1/4	Depth	1776		TYPE	Float collar	
Size & Wt. Csg.	8 5/8 24#	Depth	1766	New / Used	Float Collar	1724.37	Depth
Landing Psi	1000+	Depth			Retainer		Depth
Shoe Joint	41.63	Type			Perfs		CIBP

Customer Signature:	Basic Representative:	Victor A. Corona
	Basic Signature:	<i>Victor A. Corona</i>
	Date of Service:	9/24/2019

**Merit Energy
Lester #1
8 5/8 Surface
9/24/2019**



Pumping Order / Mixture

Client: Merit Energy
Date: 9/24/2019
Job: 8 5/8 Surface

Well Name & No: Lester #1
Location Supervisor: Victor A. Corona
COMPANY REP. Rodney Gonzales

Differential Pressure 1460 psi
Lift Pressure: 500 psi

Recipe

Pressure Test PSI: 1500

MAX PSI: 500

10 BBLS OF FRESH WATER SPACER
216 BBLS LEAD SLURRY YIELD 2.41 12.1LBS 505SKS 13.9G/SK
39 BBLS TAIL SLURRY YIELD 1.34 14.8LBS 165SKS 6.33G/SK

DROP PLUG/WASH PUMP ON TOP OF PLUG

109.0 BBLS OF DISPLACEMENT
99.0 BBLS @ 5 BPM
10.0 BBLS AT 2-3 BPM TO BUMP PLUG

DISP PLUG WITH 109 BBLS OF H2O

LEASE

OVERALL SURVEY
Lester Well # 1

DIRECTIONS

14354-19808

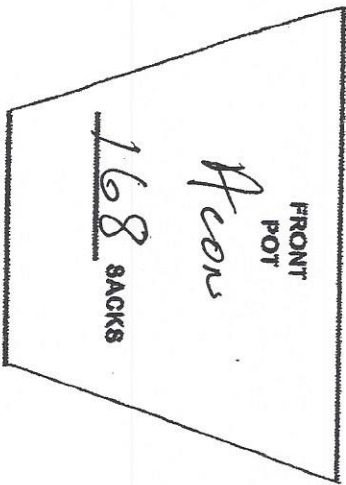
F ← B

165

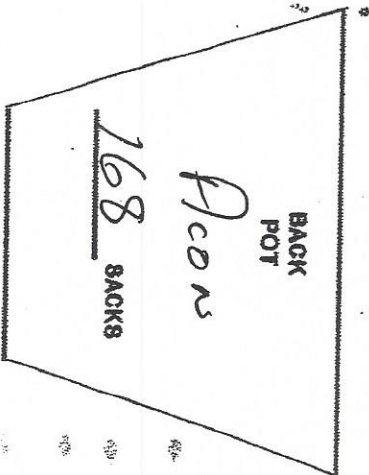
tail

169

Acorn



14355



37724

Hours to Load Truck

