



# TEMPERATURE LOG

Company Darrah Oil Company, LLC  
Well Birbeck-Keller Unit #1  
Field Taylor Northeast  
County Stafford  
State KS

Company Darrah Oil Company, LLC  
Well Birbeck-Keller Unit #1  
Field Taylor Northeast  
County Stafford State KS

Location: 1484' FSL & 2486' FWL  
API #: 15 185 24058  
SEC 2 TWP 21S RGE 14W  
Permanent Datum Ground Level Elevation 1919'  
Log Measured From KB, 5' AGL  
Drilling Measured From KB  
Other Services  
Elevation  
K.B. 1924'  
D.F. 1923'  
G.L. 1919'

Date 09-26-19

Run Number One  
Depth Driller 3460'  
Depth Logger N/A  
Bottom Logged Interval 2250'  
Top Log Interval 0'  
Open Hole Size 6 3/4"  
Type Fluid Water  
Density / Viscosity IIII  
Max. Recorded Temp. 98.4 DegF  
Estimated Cement Top 1310'  
Time Well Ready R.O.A.  
Time Logger on Bottom 10:00 a.m.  
Equipment Number T-968  
Location Hays, KS  
Recorded By Casey P.  
Witnessed By Mr.

Run Number	Borehole Record			Tubing Record		
	Bit	From	To	Size	Weight	From To

Casing Record	Size	Wd/Ft	Top	Bottom
Surface String	7"		0'	1770'
Prot. String				
Production String	4 1/2"	11.5	0'	N/A
Liner				

<<< Fold Here >>>

All interpretations are opinions based on inferences from electrical or other measurements and we cannot and do not guarantee the accuracy or correctness of any interpretation, and we shall not, except in the case of gross or willful negligence on our part, be liable or responsible for any loss, costs, damages, or expenses incurred or sustained by anyone resulting from any interpretation made by any of our officers, agents or employees. These interpretations are also subject to our general terms and conditions set out in our current Price Schedule.

### Comments

Great Bend, KS South 8 mi. (1mi past barton/stafford county line) to 200TH St., Then West for 4.5 mi. on 200TH St., North into Location

Thanks for using Gemini Wireline LLC  
785-625-1182



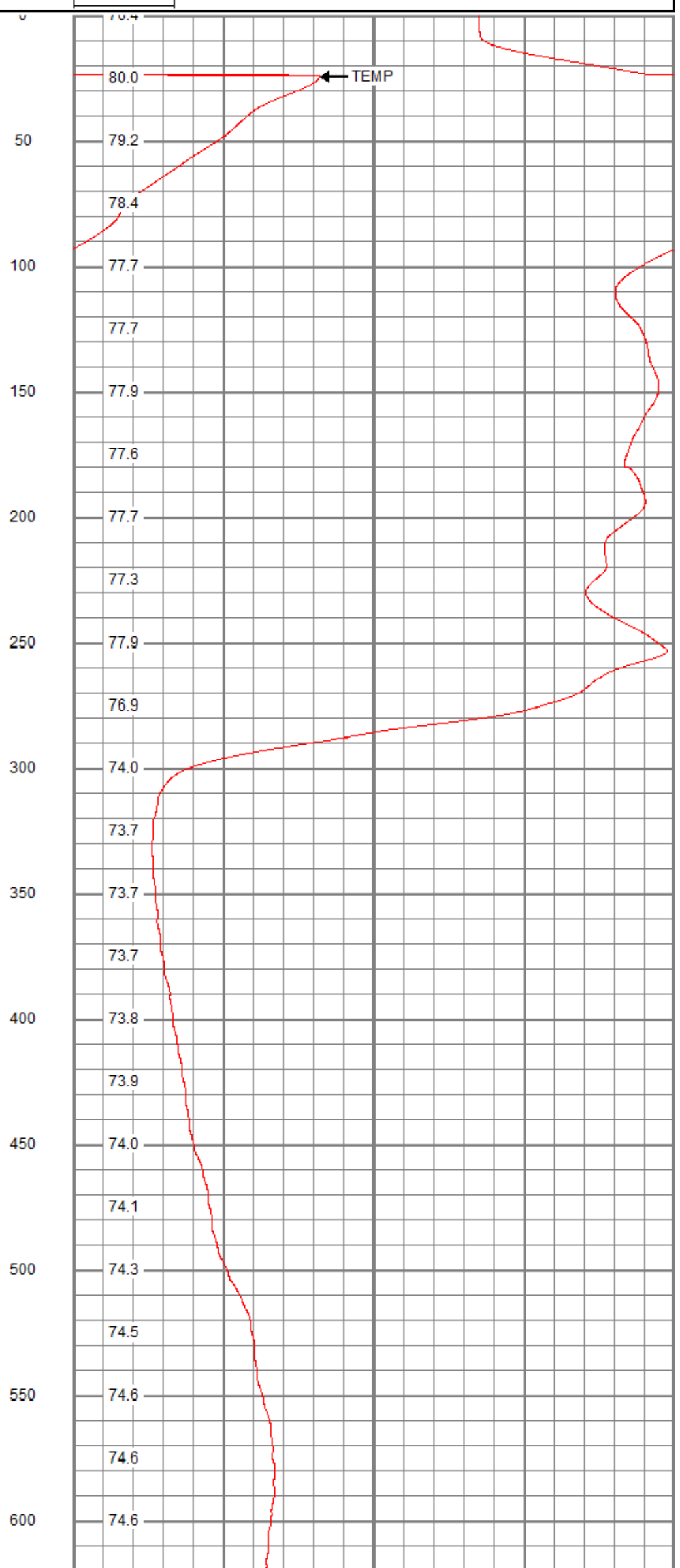
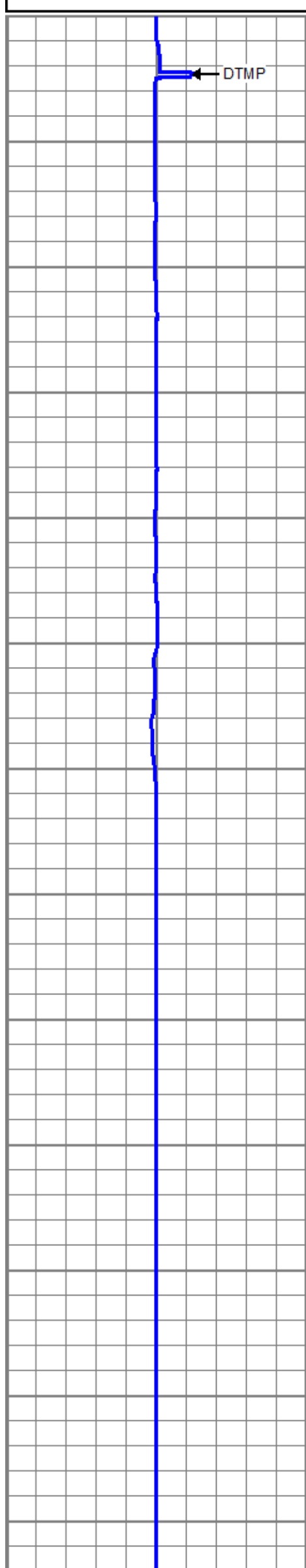
# MAIN PASS

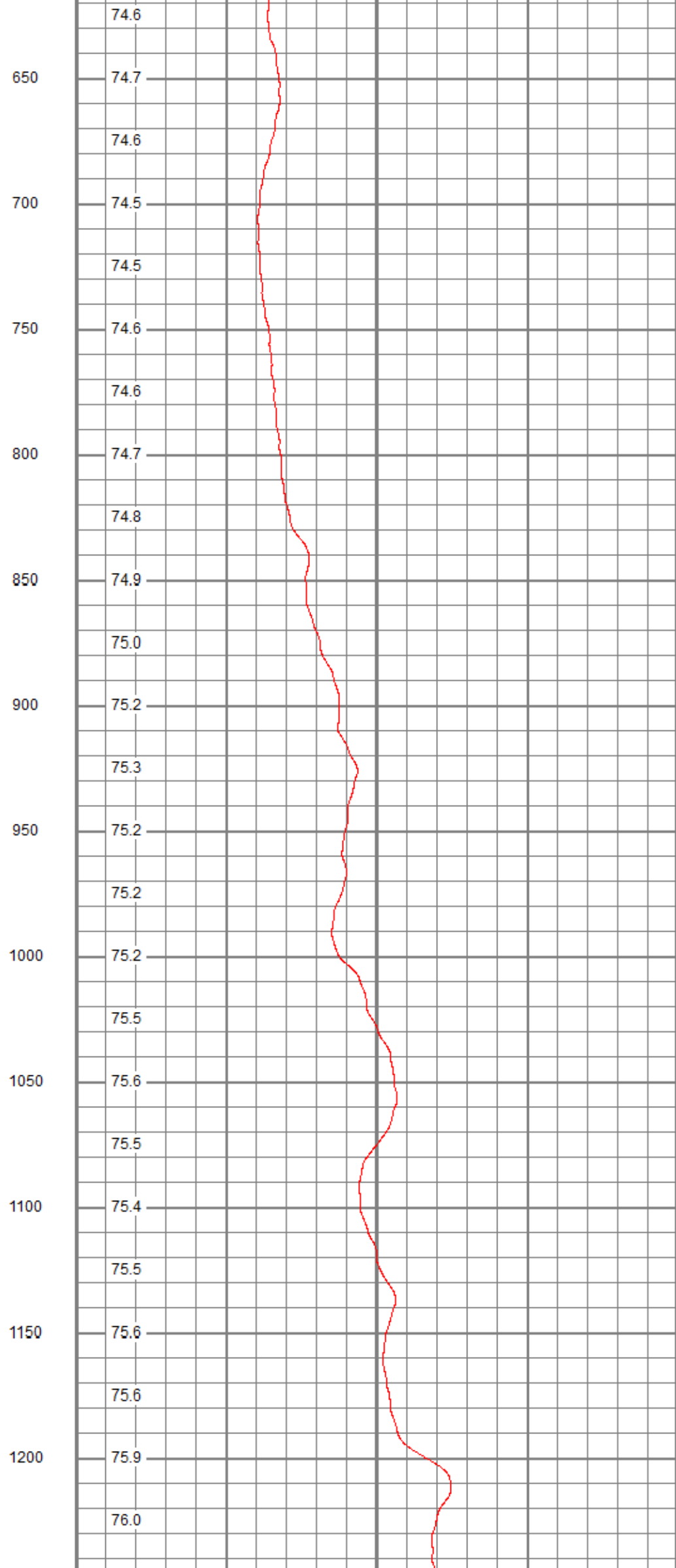
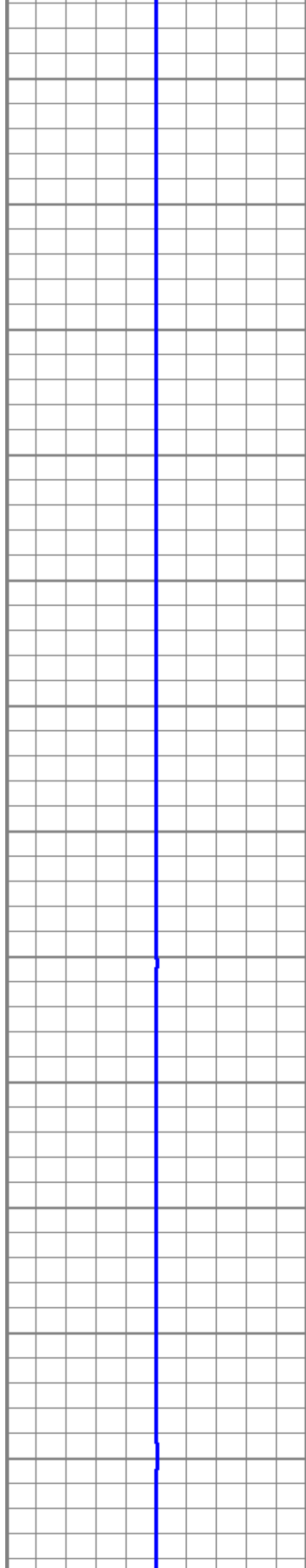
Database File dobirbeck-kellerunit#1temp.db  
Dataset Pathname pass2  
Presentation Format temp  
Dataset Creation Thu Sep 26 09:05:09 2019  
Charted by Depth in Feet scaled 1:600

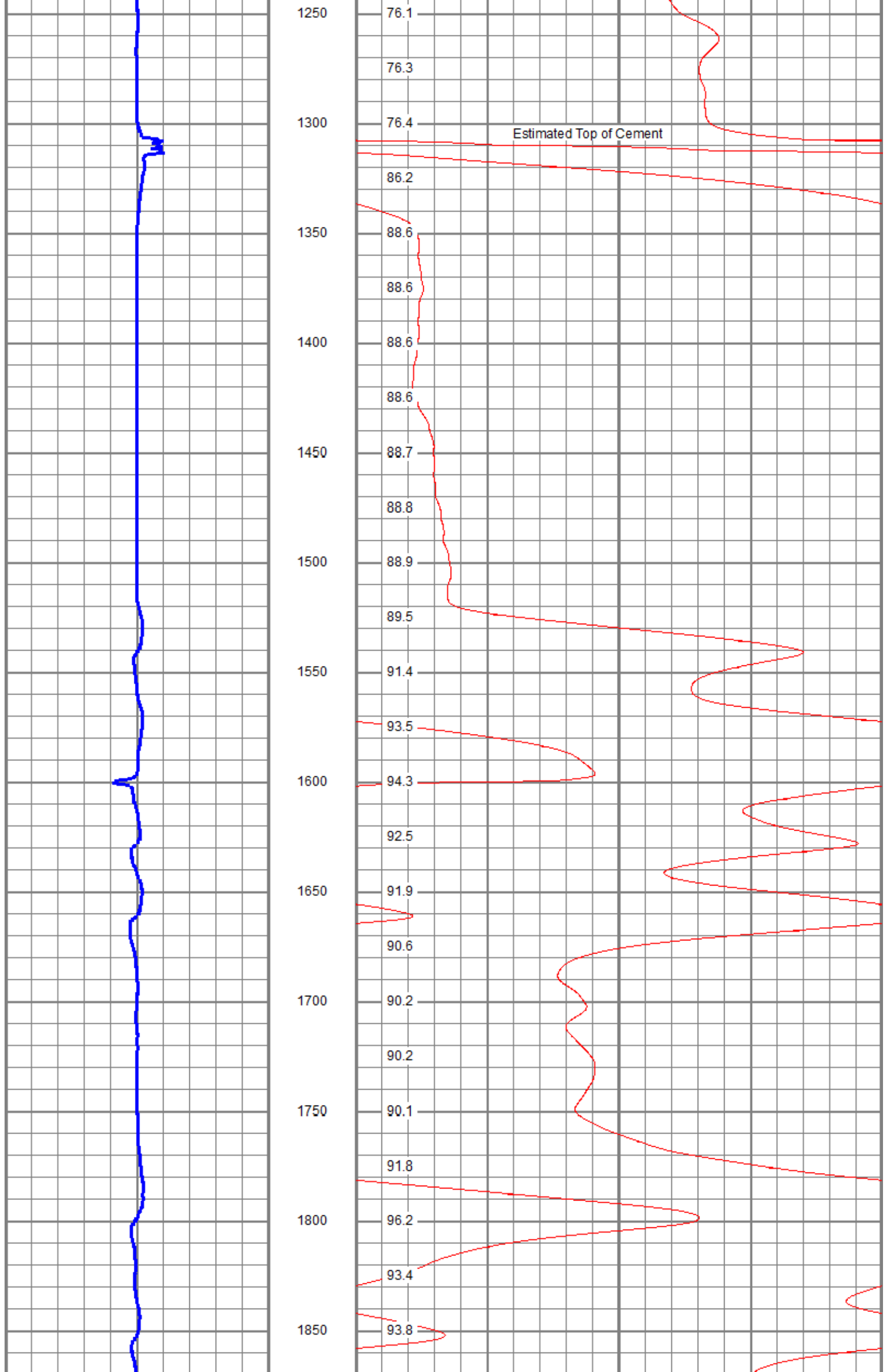
-5 DTMP (degF) 5

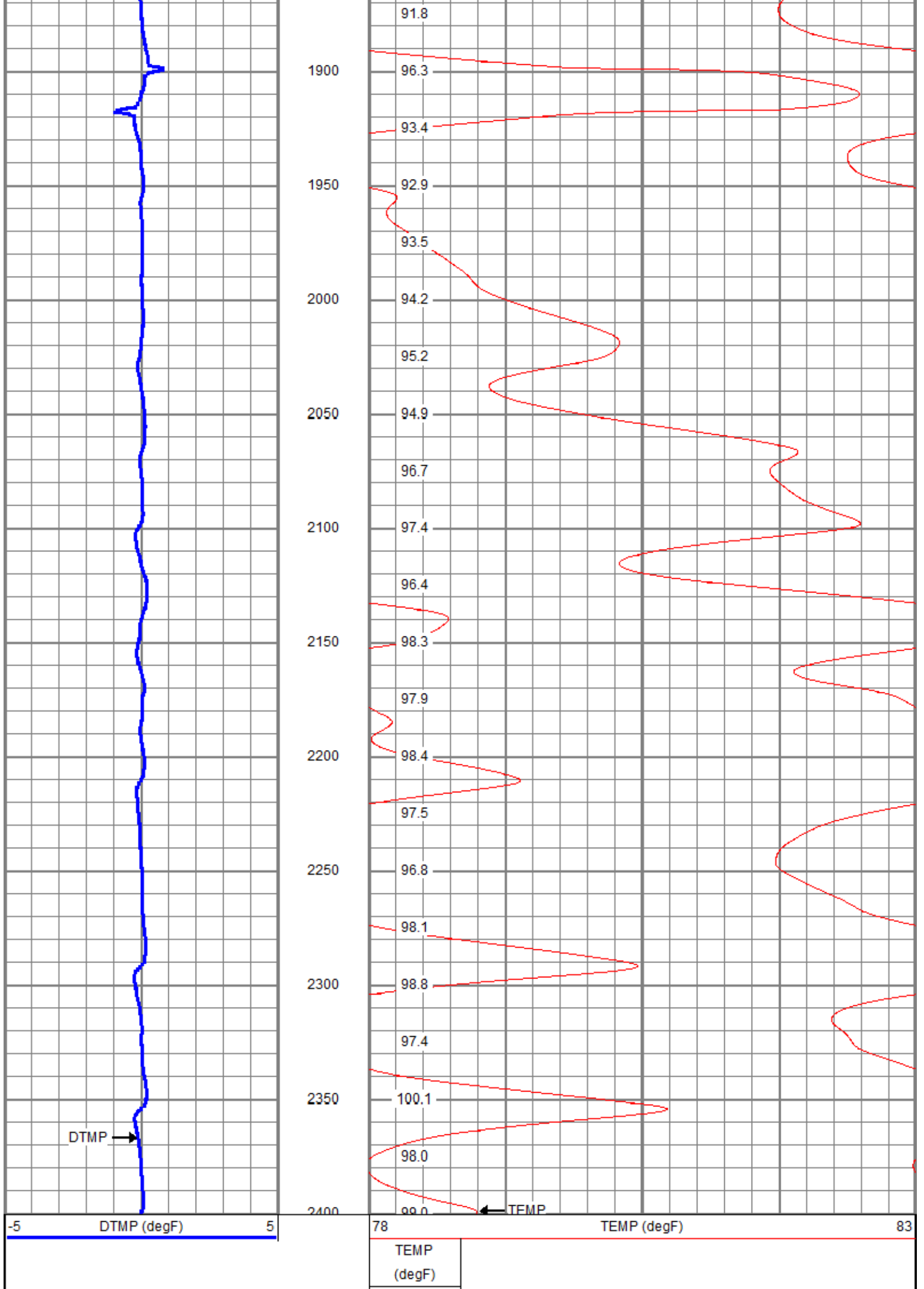
78 TEMP (degF) 83

TEMP (degF)









Calibration Report

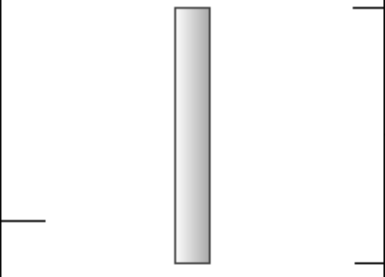
Database File      dobirbeck-kellerunit#1temp.db  
 Dataset Pathname   pass2  
 Dataset Creation   Thu Sep 26 09:05:09 2019

Temperature Calibration Report

Serial Number: 1  
 Tool Model: C  
 Performed: Fri Jul 31 16:24:47 2015

	Reference	Reading
Low Reference:	56.00 degF	590.26 cps
High Reference:	163.00 degF	1683.31 cps

Gain: 0.11  
 Offset: -1.78  
 Delta Spacing: 2

Sensor	Offset (ft)	Schematic	Description	Length (ft)	O.D. (in)	Weight (lb)
TEMP	0.20		TEMP-C (1)	1.25	1.83	2.00

Dataset: dobirbeck-kellerunit#1temp.db: field/well/run1/pass2  
 Total length: 1.25 ft  
 Total weight: 2.00 lb  
 O.D.: 1.83 in