



**NOTES**

Company: US Oil Resources, LLC.

Lease: Beougher 12A-36-1329

Field: Hoffsmityh East

Location: SW-NE-NW-SW ( 2080' FSL & 810' FWL)

Sec:36 Twsp:13S Rge:29W

County: Gove State:Kansas

KB:2779' GL:2770'

Contractor: Duke Drilling Inc. (Rig #4)

Spud:11/05/2019 Comp:11/14/2019

RTD: 4675' LTD: 4674'

Mud Up: 3500' Type\_Mud: Chemical

Samples Saved From: 3600' to RTD

Drilling Time Kept From: 3600' to RTD

Samples Examined From: 3600' to RTD

Geological Supervision from: 3600' to RTD

Geologist on Well: Jim Musgrove

Surface Casing: 8 5/8@ 263'

Production Casing: 5 1/2" @4673'

Electronic Surveys: Logged by Halliburton

| FORMATION      | DRILLING                 |       |       |       | US OIL                            |       |       |       | US OIL                             |       |       |       | DUGLOP & CONNELL                            |    |  |  |
|----------------|--------------------------|-------|-------|-------|-----------------------------------|-------|-------|-------|------------------------------------|-------|-------|-------|---|----|--|--|
|                | BEOUGHER 12-A-36-1329    |       |       |       | BEOUGHER 12A-36-1329              |       |       |       | BEOUGHER 12A-36-1329               |       |       |       | HOCKESSMITH # 1                             |    |  |  |
|                | 36-13S-29W (SW-NE-NW-SW) |       |       |       | 36-13S-29W (1105' FSL & 950' FEL) |       |       |       | 36-13S-29W (1825' FSL & 2167' FEL) |       |       |       | 36-13S-29W (SW-SW-SW (660' FSL & 4620' FEL) |    |  |  |
|                | KB                       | GL    | KB    | GL    | KB                                | GL    | KB    | GL    | KB                                 | GL    | KB    | GL    | KB  | GL |  |  |
| DEPTH          | DEPTH                    | DEPTH | DEPTH | DEPTH | DEPTH                             | DEPTH | DEPTH | DEPTH | DEPTH                              | DEPTH | DEPTH | DEPTH | DEPTH                                       |    |  |  |
| ANHYDRITE TOP  | 2231                     | 2241  | 2244  | 2244  | 2244                              | 2244  | 2244  | 2244  | 2244                               | 2244  | 2244  | 2244  | 2244  |    |  |  |
| ANHYDRITE BASE | 2269                     | 2268  | 2277  | 2277  | 2277                              | 2277  | 2277  | 2277  | 2277                               | 2277  | 2277  | 2277  | 2277  |    |  |  |
| HEEBNER SHALE  | 3873                     | -1094 | 3873  | -1094 | 3881                              | -1094 | 3881  | -1094 | 3870                               | -1092 | 3870  | -1092 | 3894  |    |  |  |
| TORONTO        | 3890                     | -1111 | 3891  | -1112 | 3896                              | -1109 | 3896  | -1109 | 3870                               | -1109 | 3870  | -1109 | 3913  |    |  |  |
| LANSING        | 3906                     | -1127 | 3907  | -1128 | 3914                              | -1127 | 3914  | -1127 | 3889                               | -1128 | 3889  | -1128 | 3931  |    |  |  |
| MUNDOE         | 4054                     | -1275 | 4055  | -1276 | 4071                              | -1284 | 4071  | -1284 | 4024                               | -1262 | 4024  | -1262 | 4024  |    |  |  |
| STARK          | 4148                     | -1369 | 4147  | -1368 | 4157                              | -1370 | 4157  | -1370 | 4123                               | -1372 | 4123  | -1372 | 4123  |    |  |  |
| HUSH, SH       | 4180                     | -1401 | 4182  | -1403 | 4190                              | -1403 | 4190  | -1403 | 4166                               | -1405 | 4166  | -1405 | 4166  |    |  |  |
| BKC            | 4210                     | -1431 | 4215  | -1440 | 4231                              | -1444 | 4231  | -1444 | 4206                               | -1445 | 4206  | -1445 | 4206  |    |  |  |
| WARM           | 4249                     | -1470 | 4249  | -1470 | 4257                              | -1470 | 4257  | -1470 | 4210                               | -1479 | 4210  | -1479 | 4210  |    |  |  |



Formation: **Spergen**  
 Deviated: No Whipstock: ft (KB)  
 Time Tool Opened: 12:19:00  
 Time Test Ended: 19:15:10

Test Type: Conventional Bottom Hole (Reset)  
 Tester: Martine Salinas  
 Unit No: 82

Interval: **4466.00 ft (KB) To 4518.00 ft (KB) (TVD)**  
 Total Depth: 4518.00 ft (KB) (TVD)  
 Hole Diameter: 7.88 inches Hole Condition: Good

Reference Elevations: 2779.00 ft (KB)  
 2770.00 ft (CF)  
 KB to GR/CF: 9.00 ft

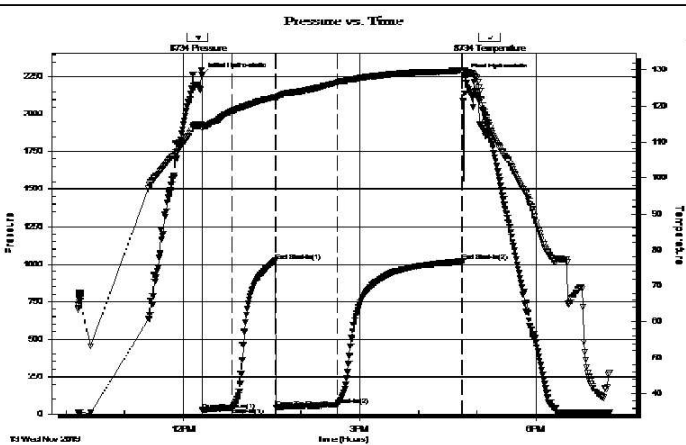
**Serial #: 8734**

**Outside**

Press@RunDepth: 61.33 psig @ 4467.00 ft (KB)  
 Start Date: 2019.11.13 End Date: 2019.11.13  
 Start Time: 10:13:01 End Time: 19:15:10

Capacity: 8000.00 psig  
 Last Calib.: 2019.11.13  
 Time On Btm: 2019.11.13 @ 12:18:50  
 Time Off Btm: 2019.11.13 @ 16:47:30

**TEST COMMENT:** 30-IF-Surface blow built to 3 3/4"  
 45-ISI-No blow back  
 60-FF-Surface blow built to 8"  
 125-FSI-No blow back



**PRESSURE SUMMARY**

| Time (Min.) | Pressure (psig) | Temp (deg F) | Annotation           |
|-------------|-----------------|--------------|----------------------|
| 0           | 2260.27         | 114.75       | Initial Hydro-static |
| 1           | 27.37           | 113.65       | Open To Flow (1)     |
| 32          | 42.68           | 118.65       | Shut-In(1)           |
| 76          | 1022.73         | 122.50       | End Shut-In(1)       |
| 76          | 43.46           | 122.28       | Open To Flow (2)     |
| 139         | 61.33           | 126.56       | Shut-In(2)           |
| 266         | 1018.46         | 129.81       | End Shut-In(2)       |
| 269         | 2258.79         | 129.83       | Final Hydro-static   |

**Recovery**

| Length (ft) | Description           | Volume (bbl) |
|-------------|-----------------------|--------------|
| 85.00       | GOCM 12%G, 18%O, 70%M | 1.19         |
| 5.00        | CO 100%O              | 0.07         |
| 0.00        | 90' GIP               | 0.00         |
|             |                       |              |
|             |                       |              |

\* Recovery from multiple tests

**Gas Rates**

|  | Choke (inches) | Pressure (psig) | Gas Rate (Mcf/d) |
|--|----------------|-----------------|------------------|
|  |                |                 |                  |

**ROCK TYPES**

Cht    
 Chtcongl    
 Lmst fw<7    
 Carbon Sh  
 Cht vari    
 Dolprim    
 shale, gry    
 shale, red

**OTHER SYMBOLS**

**Oil Show**

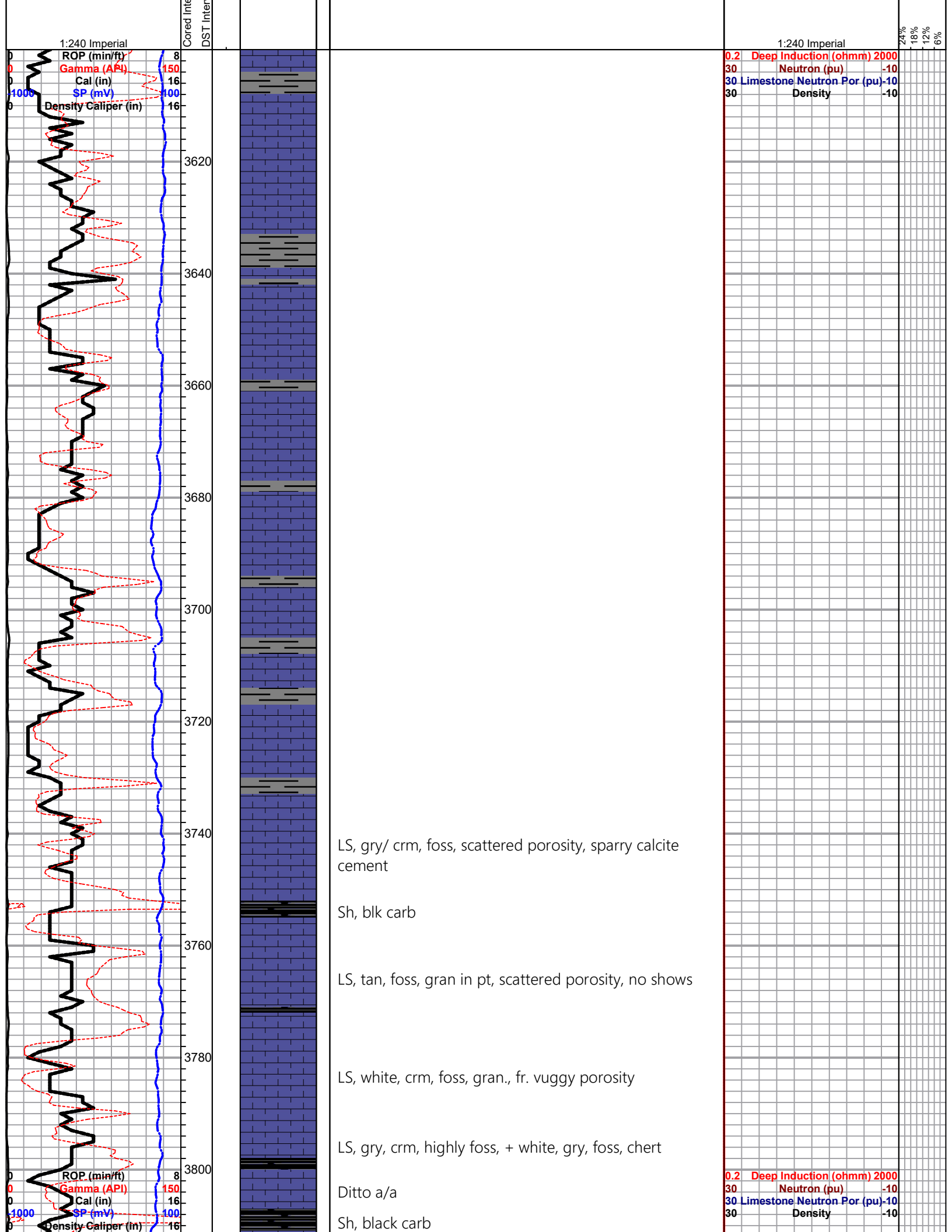
- Good Show
- Fair Show
- Poor Show
- Spotted or Trace
- Questionable Stn
- D Dead Oil Stn
- Fluorescence
- \* Gas

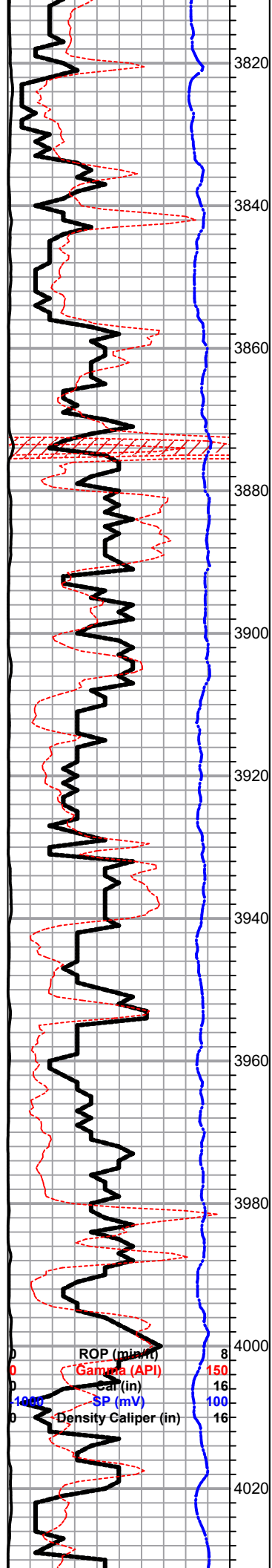
**DST**

- DST Int
- DST alt
- Core
- || tail pipe

Printed by GEOstrip VC Striplog version 4.0.8.15 (www.grsi.ca)

| Curve Track #1       | Depth   Intervals | DST | Lithology | Oil Show | Geological Descriptions | TG, C1 - C5                | Porosity |
|----------------------|-------------------|-----|-----------|----------|-------------------------|----------------------------|----------|
| ROP (min/ft)         | —                 |     |           |          |                         | Deep Induction (ohmm)      | ----     |
| Gamma (API)          | - - - -           |     |           |          |                         | Neutron (pu)               | ----     |
| Cal (in)             | - - - -           |     |           |          |                         | Limestone Neutron Por (pu) | ----     |
| SP (mV)              | - - - -           |     |           |          |                         | Density                    | ----     |
| Density Caliper (in) | - - - -           |     |           |          |                         |                            |          |





LS, white, grym, ool, goss, good fine vuggy type porosity, + tr. gry white chert

Sh, dk gry, blk

LS, gry, tan, foss, mottled chalky, fair porosity, no shows

Sh, black carb

**HEEBNER 3873.0 (-1094.0)**

Sh, black carb

Sh, gry/ gryish green

**TORONTO 3890.0 (-1111.0)**

LS, white, crm, gry, fxl, slightly chalky, + tan/ gry opaque chert

**LANSING 3906.0 (-1127.0)**

LS, white, crm, f- med xln, foss in pt, chalky , no shows

LS, white, gry, crm, fxl, chalky, few cherty poor vis. porosity, no shows, (few ool LS, )  
Sh, maroon, soft sh

LS, tan, gry, highly ool, slightly cherty ( dense)

Sh, gry, silty soft

LS, gry, highly ool, oom, fair--->good oom por., + white chalk, no shows no odor

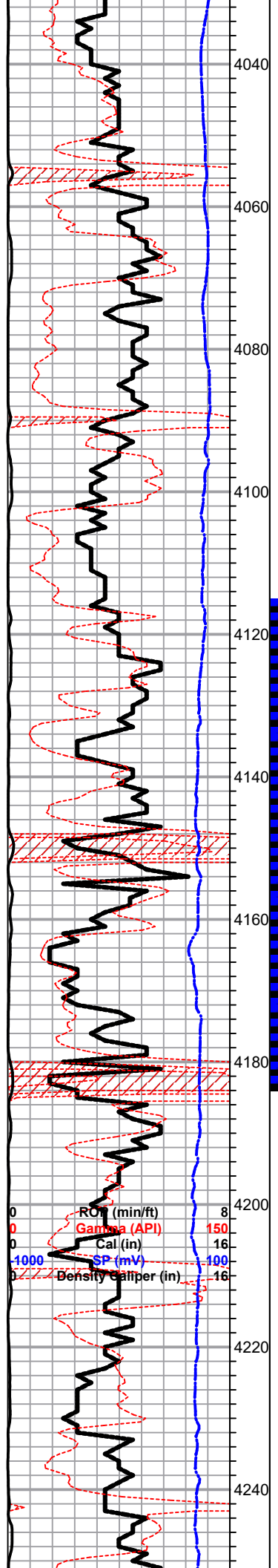
Sh, gry, silty , soft

LS, gry, white, fxl, chalky, poor vis. por., gry/ blk stain, tr. sfo, no odor

LS, tan, fxl, suc. few dol., +gry, white chert

LS, white, gry, fxl, ool, finely oom, fair porosity, + tr. white, chert

|     |                               |
|-----|-------------------------------|
| 0.2 | Deep Induction (ohmm) 2000    |
| 30  | Neutron (pu) -10              |
| 30  | Limestone Neutron Por (pu)-10 |
| 30  | Density                       |



LS, tan, slightly cherty ( dense)

**MUNCIE CREEK 4054.0 (-1275.0)**

Sh, black carb

LS, tan, fxl, cherty ( dense)

LS, tan, foss, chalky, poorly developed por., brn stain tr. fo , no odor

Sh, black carb

Sh, gry, silty soft

LS, tan, gry, fxl, chalky, scattered, p.p. porosity, brn stain , tr. fo , no odor

LS, white/ crm , ool, scattered porosity, brn / lt. brn stain , sfo, faint odor

**STARK SHALE 4147.0 (-1368.0)**

Sh, black carb

LS, white, tan, gry, fxl, ool, slightly chalky, fair inxln / vuggy type porosity, brn stain , sfo, fair odor

**HUSH. SH. 4180.0 (-1275.0)**

Sh, black carb

LS, white, cream, foss, med xln, chalky, + white chalk n/sfo

**BKC 4219.0 (-1440.0)**

Tr. blk carb sh , LS, tan, brn chalky,

Sh, gry white / clay, soft ,  
 Tr. Sd. gry, silty, cal.  
 LS, tan, foss, dense, tr. brn stain nsfo, no odor

**MARMATON 4249.0 (-1401.0)**

Sh, black carb

**DST #1 4116-4182**  
**30-45-60-90**

**1ST OPEN:**  
 GOOD 8.5" BLOW

**2ND OPEN:**  
 BOB 42 MINS.

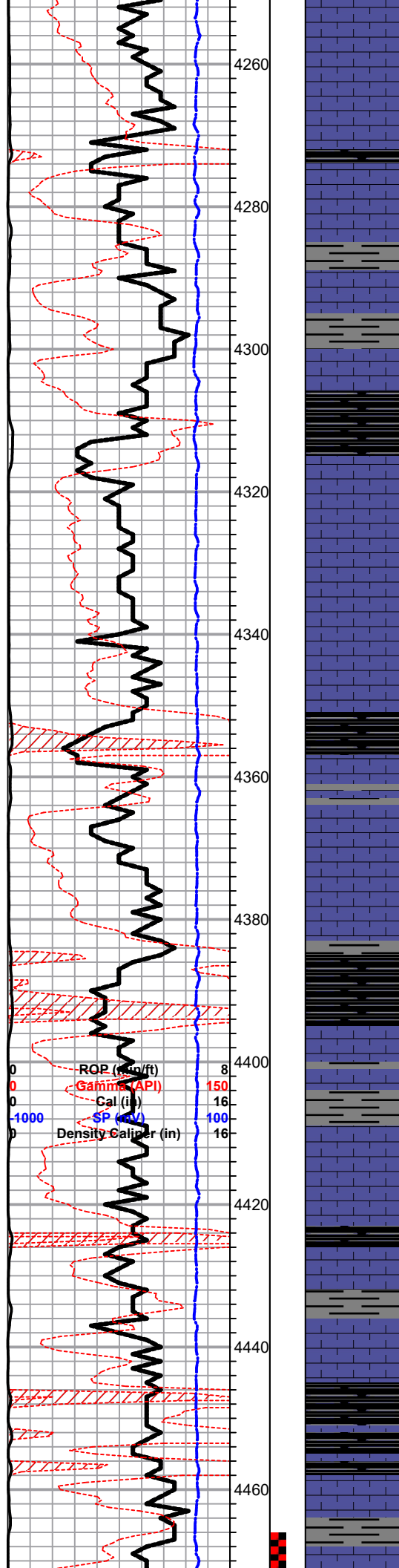
**RECOVERY:**  
 130' GIP

1' CLEAN OIL  
 99' O&GCM  
 (8%G, 24%O, 68%M)

60' SL. O&GCWM  
 (15%G, 5%O, 20%W  
 60%M)

**PRESSURES:**  
 ISIP 1196 psi  
 FSIP 1184 psi  
 IFP 29-58 psi  
 FFP 54-98 psi  
**SHS 2031-2023 psi**

0  
0  
0  
0



**MARMATON 4249.0 (-1401.0)**

LS, white, maroon tinted, chalky, dense  
 ○ LS, tan, white, ool, chalky---> cherty, poor vis. porosity, tr. poor stain , nsfo, no odor  
 Sh, black carb

LS, white, gry, chalky, oolitic in part, poor vis. porosity, nsfo

Sh, black carb sh, Tr. maroon, gray soft sh.

**PAWNEE 4317.0 (-1538.0)**

LS, white, tan, gry, fxl, gran. a/a

LS, tan, gry, dense, poor vis. porosity, no shows

**US OIL -MYRICK ST. 4353.0 (-1574.0)**

Slug blk carb sh.

○ LS, tan, ool, slightly chalky, brn / golden brn stain , tr. fo  
 ??? odor .  
 ● + white/gry chert

Slug black carb sh.

**FORT SCOTT 4396.0 (-1617.0)**

LS, cream, white, tan, ool, foss dense

○ LS, white, tan, foss, ool, poor vis., porosity, brn ,spty stain , nsfo, no odor

**CHEROKEE SH. 4426.0 (-1647.0)**

Sh, black carb

Sh, black carb

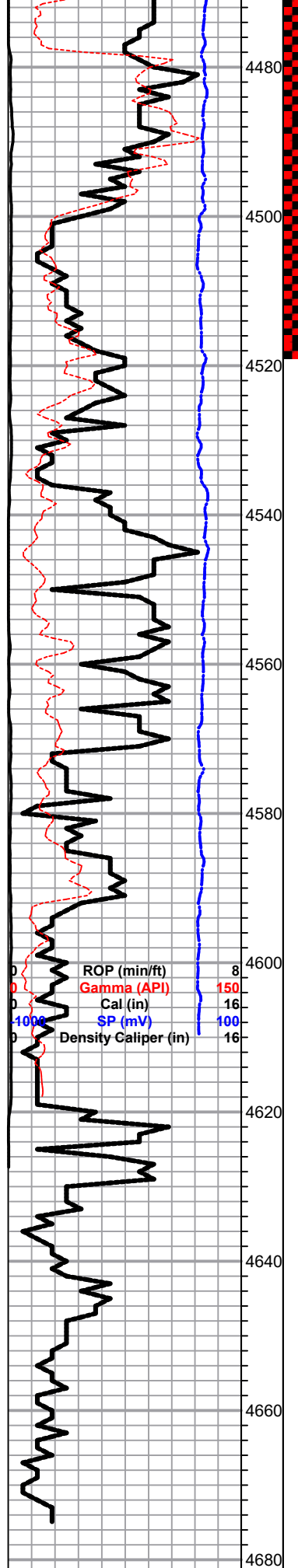
LS, tan, white, slightly ool, chalky, poor vis. porosity

LS, white, chalky, poorly dev. por. , nsfo, no odor

|     |                            |      |
|-----|----------------------------|------|
| 0.2 | Deep Induction (ohmm)      | 2000 |
| 30  | Neutron (pu)               | -10  |
| 30  | Limestone Neutron Por (pu) | -10  |
| 30  | Density                    | -10  |

**DST#2 4466-4518**  
**30-45-60-125**

**1st Open:**  
 Weak (3.75")



**CONGLOMERATE 4480.0 (-1701.0)**

Chert, yellow, orange, white, boney opaque. yellow, green Tr. vfg sd. poor porosity + chert & sd.

**MISS. SPERGEN 4498.0 (-1719.0)**

Dol. tan, suc. foss, fair - good, vuggy type porosity, fair / good brn stain / sat., sfo faint odor  
 Dol, a/a, +gry, fxl, suc. dolomitic, fair, p.p. por., brn / blk stain, sfo, ??? odor

Dol, tan, gry, fxl, suc. poor vis. porosity, nsfo,

Dol, tan, gry, fxl, suc. few scattered vuggy porosity, tr. gry/ brn stain, nsfo, no odor

**MISS. WARSAW 4540.0 (-1761.0)**

LS, gry, white, f- med xln, foss, chalky, poor porosity, tr. gry chert

LS, gry, white, f- med xln, foss, chalky, poor porosity, + white boney chert, tr. rounded sub rounded sd. / qtz grains

a/a,

**MISS. OSAGE 4568.0 (-1789.0)**

LS, gry tan, foss, dolomitic in part, no shows

Dol., white, suc. poor porosity, few glauc. + white, boney chert & clear/ trans chert

LS, tan, gry, highly ool, poor vis., porosity

**GILMORE CITY 4620.0 (-1841.0)**

(Lower Osage Lime??)

LS, tan, gry, highly ool, poor vis. porosity, no shows

Dol, gry, white, suc. + white tran, chert

Slug gry, white, boney opaque chert

**LTD 4674.0 (-1895.0)**

**RTD 4675.0 (-1896.0)**

**2nd Open:**

Fair ( 8")

**Recovery:**

5' Clean oil

**80' OGCM**

(12%G, 18%O, 70% M)

**Pressures:**

ISIP 1023 psi

FSIP 1018 psi

IIP 27-43 psi

FFP 43-61 psi

HSH 2260-2257psi

|     |                            |      |
|-----|----------------------------|------|
| 0.2 | Deep Induction (ohmm)      | 2000 |
| 30  | Neutron (pu)               | -10  |
| 30  | Limestone Neutron Por (pu) | -10  |
| 30  | Density                    | -10  |



