



Scale 1:240 (5"=100') Imperial  
Measured Depth Log

Well Name: Wailes Farms #1-16 - Brito Oil Company, Inc.  
API: 15-023-21526-00-00  
Location: W2-E2-NE-NW, Section 16-T05W-R37W  
License Number: KCC #4629  
Spud Date: November 21, 2019  
Surface Coordinates: 660' FNL & 2290' FWL,  
of Section  
Bottom Hole Vertical Wellbore  
Coordinates:  
Ground Elevation (ft): 3393 Ft. K.B. Elevation (ft): 3398 Ft.  
Logged Interval (ft): 3800 Ft. To: 5000 Ft. Total Depth (ft): RTD 5000 Ft. LTD 5000 Ft.  
Formation: Mississippian at Total Depth  
Type of Drilling Fluid: Chemical

Region: Cheyenne Co., Ks  
Drilling Completed: December 01, 2019  
Results: D & A  
Field: Wildcat

Printed by MudLog from WellSight Systems 1-800-447-1534 [www.WellSight.com](http://www.WellSight.com)

Operator

Company: Brito Oil Company, Inc.  
Address: 8100 E 22nd St. North, STE 600-R  
Wichita, Kansas 67226-2324

Geologist

Name: M. Bradford Rine  
Company: Consulting Geologist, Kansas Lic. #204, Wyo #189, AAPG Cert. #2647  
Address: 100 South Main, Suite #320A  
Wichita, Kansas 67202

Remarks

Based on sample observations, drill stem test results, and electric log evaluation, it was the decision of the Operator to plug and abandon the "Wailes Farms #1-16", on December 01, 2019.

Respectfully submitted,  
M. Bradford Rine, geologist

## Drilling Information

**Rig:** Murfin, #3  
**Pump:** Emsco D-375  
**Drawworks:** Ideco H35  
**Collars:** 536' 2-1/4 x 6-1/4  
**Drillpipe:** 4-1/2" 16.6# XH  
**Toolpusher:** Jay Ruzicka

**Mud:** Mudco (Reid Atkins)  
**Gas Detector:** None  
**Drill Stem Tests:** Trilobite (Shawn Wheelbarger)  
**Logs:** Pioneer (D. Schmidt)  
**Water:** Water Well on Location  
**Company Representatives:**  
**Office:** Raul Brito  
**Field:** None

## Daily Drilling Status

<b>Date:</b>	<b>Operations/Depth/Comments</b>
11-19-19	MIRT, Begin RU @ 0'
11-20-19	Finish Location and Drill Water Well @ 0'
11-21-19	Finish RU, Spud @ 0'
11-22-19	Waiting on Cement @ 344'
11-23-19	Drilling @ 1800'
11-24-19	Drilling @ 2995'
11-25-19	Drilling @ 3795'
11-26-19	Drilling @ 4210'
11-27-19	Circuating, Due to Winter Storm @ 4373'
11-28-19	Trip Out of Hole with DST #1 @ 4485'
11-29-19	On Bottom with DST #2 @ 4680'
11-30-19	Drilling @ 4935'
12-01-19	Trip Out of Hole with DST #3 @ 5000' Finish plugging at 4:00 PM

	Results: D & A			(Well A) D & A		Well A
	Brito Oil Company			L.D. Drilling , Inc.		
	Wailes Farms #1-16			#1-16 Wailes Farms, Inc.		
	660' FNL & 2290' FWL			663' FNL & 2121' FEL		
	Sec. 16-05S-37W			Sec. 16-05S-37W		
	KB 3398			KB 3420		Well A
Formations	Sample	E-Log	Datum	E-Log	Datum	Comp
Anhydrite	3118	3117	281	3136	284	-3
B/Anhydrite	3154	3155	243	3175	245	-2
Stotler	3970	3968	-570	3991	-571	1
Heebner Sh.	4224	4223	-825	4250	-830	5
Toronto	4239	4238	-840	4265	-845	5
Lansing	4274	4274	-876	4300	-880	4
Muncie Creek Sh.	4400	4400	-1002	4425	-1005	3
Stark Sh.	4478	4477	-1079	4504	-1084	5
B/Kansas City	4559	4558	-1160	4584	-1164	4
Marmaton	4570	4574	-1176	4598	-1178	2
Pawnee	4662	4663	-1265	4684	-1264	-1
Myrick Station	4699	4698	-1300	4726	-1306	6
Ft. Scott	4720	4719	-1321	4744	-1324	3
Cherokee Sh.	4748	4746	-1348	4771	-1351	3
B/Penn Lime	4891	4884	-1486	4916	-1496	10
Mississippian	4953	4950	-1552	4976	-1556	4
Total Depth	5000	5000	-1602	5042	-1622	20

## Casing Record, Bit Record, Deviation Surveys

### CASING:

Conductor: None

Surface: Ran 8 jts 8-5/8" 23# new casing, set @ 344'. ( ) Cement with 255 sx Class A, 3%CC, 2% gel. Cement did circulate. Plug down at 12:30 AM, November 22, 2019.

Production: Plugged w/ 245 sxs 60/40 poz 4% gel. 1st plug @ 3140' w/ 20 sxs, 2nd plug @ 2200' w/ 100 sxs, 3rd plug @ 400' w/ 50 sxs, 4th plug @ 10' w/ 10 sxs, RH 30 sxs, MH 15'sxs. Plug dwn at 4:00 PM, December 01, 2019.

### BITS:

No.	Size	Make	Model	Depth In	Depth Out	Hours
1	12-1/4	HTC	B37DX	0	344	5.25
2	7-7/8	Smith	MDI516	344	3715	54.00
3	7-7/8	Smith	F12Y	3715	5000	67.25

### DEVIATION SURVEYS:

Deviation:	Depth:	Deviation:	Depth:
0.25*	344'	0.25*	3715'
1.00*	826'	0.50*	4485'
3.00*	1359'	0.25*	5000'
1.25*	1453'		
1.00*	1950'		

### PIPE STRAPS:

Difference: depth:  
0.83 ft. 3715 ft.

### Mudup:

Displace @ 3500'  
Completed @ 3520'

**DST #1: 4396-4485 (LKC H,I,J)**

**Times: 30-30-30-30**

**\*(slid tool 20 ft!)**

**Initial Open: Wk Blow, Built to 1.25" i.b.**

**Final Open: No Blow**

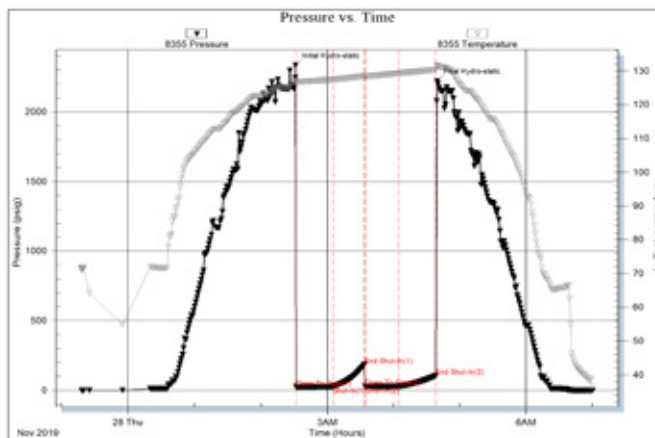
**Rec: 10' mud**

**IHP: 2331 FHP: 2219**

**IFP: 23-25 FFP: 27-27**

**ISIP: 184 FSIP: 104**

**BHT: 132°F**



**DST #2: 4643-4680 (Pawnee)**

**Times: 30-30-30-30**

**Initial Open: Wk Blow, built to 1.50" i.b.**

**Final Open: Wk Surf Blow, died 5 min.**

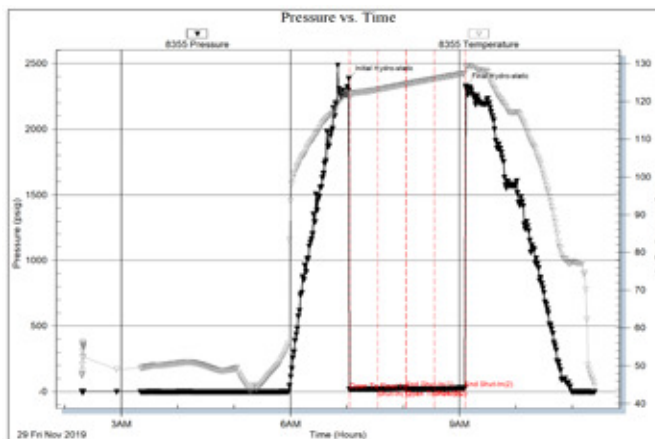
**Rec: 1' mud**

**IHP: 2385 FHP: 2327**

**IFP: 15-16 FFP: 16-18**

**ISIP: 28 FSIP: 28**

**BHT: 129°F**



**DST #3: 4680-4736 (Myrick Station)**

**\*Stradde Test after logs!**

**Times: 30-30-30-30**

**Initial Open: Wk Blow, built to 1-1/2" i.b.**

**Final Open: No Blow**

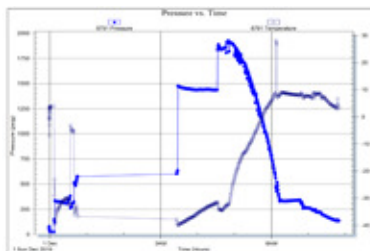
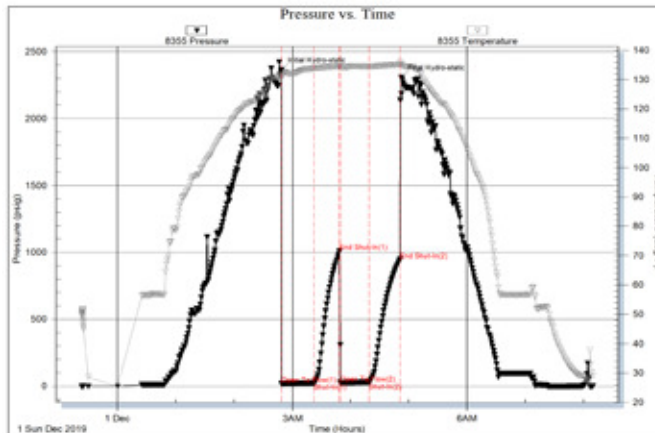
**Rec: 5' mud**

**IHP: 2361 FHP: 2306**

**IFP: 18-23 FFP: 26-28**

**ISIP: 1009 FSIP: 945**

**BHT: 135°F**



### Rock Types

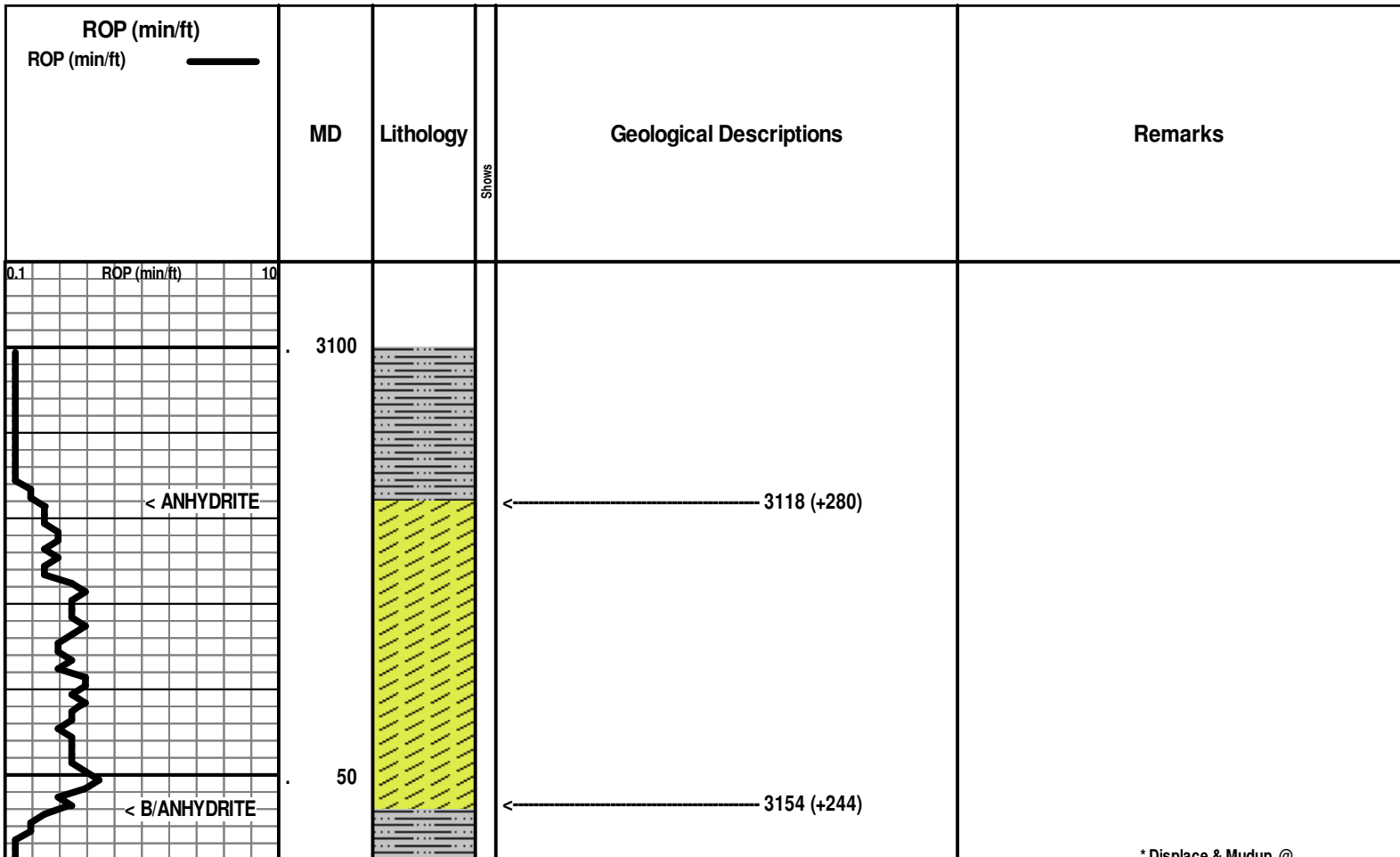
	Cgl/gran wash		Bent		Dol		Salt		Till
	Dol ls/lmy dol		Brec		Gyp		Shale		Siltysh
	New symbol		Cht		Igne		Shcol		Shlysiltst
	Dol ls/lmy dol		Clyst		Lmst		Shgy		Siltst
	New symbol		Blk sh/coal		Meta		Ss		Sandyls
	Anhy		Congl		Mrlst				

### Accessories

<b>MINERAL</b>		Gyp	<b>FOSSIL</b>		Ostra		Siltstrg
	Anhy		Hvymin		Pelec		Ssstrg
	Arggrn		Kaol		Pellet	<b>TEXTURE</b>	
	Arg		Marl		Pisolite		Boundst
	Bent		Minxl		Plant		Chalky
	Bit		Nodule		Strom		Cryxln
	Brecfrag		Phos	<b>STRINGER</b>			Earthy
	Calc		Pyr		Anhy		Finexln
	Carb		Salt		Shale		Grainst
	Chtdk		Sandy		Bent		Lithogr
	Chtlt		Silt		Coal		Microxln
	Dol		Sil		Dol		Mudst
	Feldspar		Sulphur		Gyp		Packst
	Ferrpel		Tuff		Ls		Wackest
	Ferr				Mrst		
	Glau						

### Other Symbols

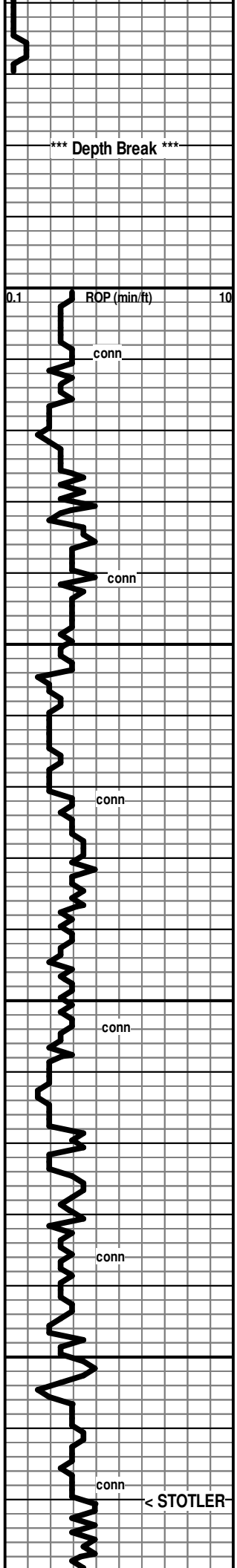
<b>OIL SHOW</b>		Even		Dead	<b>INTERVAL</b>		
	Oil & gas show		Spotted		Gas		Core
	Gas show		Trace or questionable				Dst



Bit Trip @ 3715 ft!

\* Pipe Strap @ 3715': Short .83ft!

7:00 AM, November 25, 2019



3800

3850

3900

3950

<3800-3870: 80% Shales, red-gy-grn, earthy to submushy to silty, 20% siltst and Ls, wh-gy, fn xln, mostly dns to pr xln por

3880' spl: 80% Ls wh-cr-gy, dolom in pt with mostly pr vis xln por-some fr xln por; 20% Shales as above

80% Ls wh-cr-gy, dolom in pt with mostly pr vis xln por-some fr xln por; 20% shales red, gy, gm

50% Shales, lt brn-red-grn-gy, silty in pt, some wh siltstone; 50% Ls, Wh-cr-tan, fn xln, pr-fr xln por subsucr in pt, silty in pt

60% Shales, mostly gy-dky gy, some reddish to grn, silty in pt to shaley siltstone; Ls wh-cr, fn xln, pr xln por

60% Shales gy-red, earthy-silty, mushy-soft-subfirm; 40% Ls wh-cr, fn xln, pr xln por, foss-abund foss

<----- 3970 (-572)  
Ls wh-cr, fn xln, chalky in pt, pr xln por in pt, dns in pt, foss

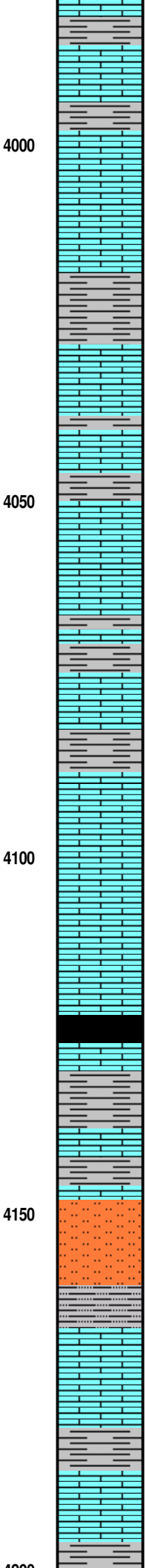
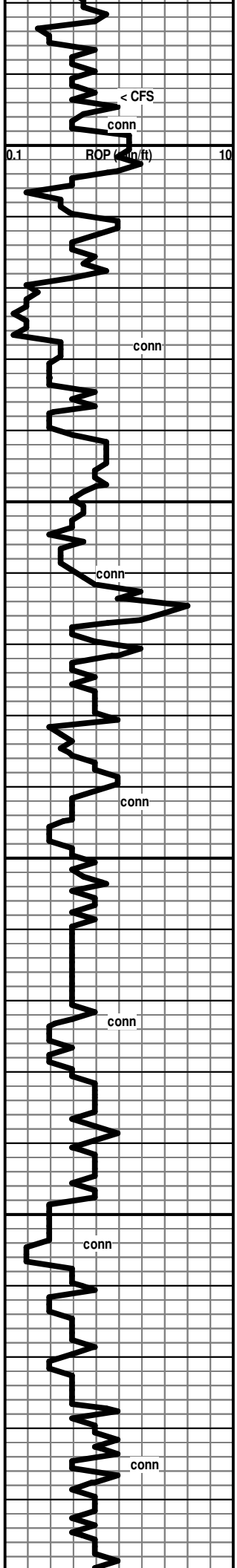
Show Descr. ----->

Ls wh-cr, fn xln, pr xln por, foss, col in pt/well-cem, some gy-red

Mud Check: Drlg @ 3841':

Vis	Wt	WL	LCM	PV	YP
52	8.5	6.4	4	18	15
Chl	Hd	pH	Solids		
1500	20	11.5	1.6		

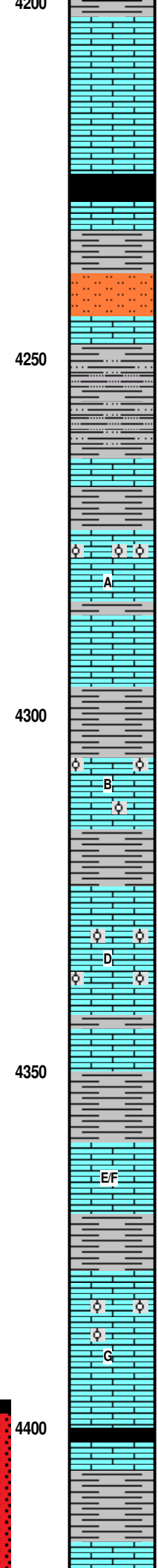
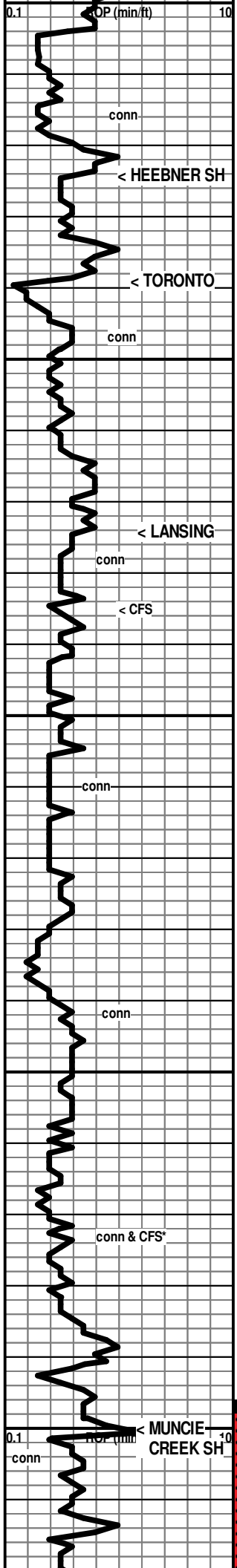
[3990' spl: No Odor, mod am't of dk brn-blk spotty & patchy stn, Low % pcs with v sli shows of brn FO, mod am't of pcs with si shows of NVL/deadish oil, No fluor]



shale  
 Sh gy-red  
 Ls wh-cr, fn xln, pr xln por to dns, foss & ool  
 4000' spl, 80% shales and silty shale: red-gr-gm; 20% Ls wh-cr, fn xln, mostly dns, some pr xln por, foss  
 Ls wh-cr, fn xln, gritty text & subsucr text in pt, pr-fr xln por in pt, dns in pt,  
 Ls wh-cr-pl gy, fn xln, subchalky in pt, dns in pt, pr-fr xln por in pt, sli foss in pt; Low % of spls of shale red-gy  
 Sh red-gy-gm, silty to earthy text  
 Ls wh-cr, fn xln, pr xln por to dns, foss  
 Sh red, soft to mushy  
 4050  
 Ls wh, fn xln, pr xln por, scatt pp pores, foss  
 [4070' spl: No Odor, no fluor, mod am't of pcs with black spotty stn of Dead Resid/Gilson, NSFO]  
 Sh red  
 Ls wh-cr, fn xln, dns to prxln por, foss to abund foss in pt  
 Sh red-gy-gm  
 4100  
 Ls wh-cr-pl gy.fn xln, dns in pt, pr xln por in pt, foss  
 Sh dk gy-black, carb to subcarb  
 Ls wh-cr-tan-brn, fn xln, dns, foss  
 Sh red, mushy to soft  
 Sh gy, silty  
 4150  
 Siltstone & mostly shaley siltstone, red  
 Ls wh, fn xln, dns, foss  
 Sh gy-red  
 Ls wh=gy, vfn-fn xln, dns  
 Sh red, silty

No fluor





Ls wh-cr, fn xln, pr xln por, foss  
 [4210' spl: No Odor, No Fluor, scatt black resid/gilson stn, NSFO]

Ls wh-cr, fn xln, abund chalky and soft, some with pr-fr xln por, grainy in pt, foss

<----- 4224 (-826)  
 Sh black, carb (trace in 4230' spl, abund in 4240' spl)

Sh gy-red

<----- 4239 (-841)  
 Siltstone, pl red-wh, some calc cem, shaley in pt

Ls wh, fn xln, dns with Rr patches of v pr xln por  
 [No Odor, No Fluor, Rr small patches of dk brn-blk spotty stn, NSFO]

Shale & shaley Shaley Siltstone, mostly red, some gy-grn

Ls wh,fn xln, dns with scatt pp pores, foss  
 [No Odor, No Fluor, Rr small patches of dk brn-blk spotty stn, some spots tarry, NSFO]

Sh red, mushy to soft

<----- 4274 (-876)

Ls wh-cr, fn xln, abund chalky & soft, abund dns, scatt pr xln por, scatt transl calcite fully filled pores, foss, some oolitic & pelletoidal pcs  
 No Odor, No fluor, Rr pcs with spots of resid/gilson/tarry blk stn, NSFO]

Sh gy-grn, argill to subsilty

Sh red-grn, silty in pt

Ls wh, fn xln, pr-fr xln por,scatt pp pores, foss, fnly ool in pt

Sh gy-grn

Sh red, mushy-soft, earthy to silty text

Ls wh-cr, fn xln, pr-fr xln por in pt, chalky in pt, foss, ool in pt

[No Odor, No fluor, V Rr pcs with spots of blk tarry/resid stn]

Ls wh-cr, fn xln, mostly dns, foss

Sh red-gr-grn, earthy to silty, soft to subfirm

Ls wh fn xln, pr-fr xln por in pt, chalky in pt, some pcs with red clay marbling, foss

Sh red-gy-grn

Ls wh, fn xln, pr vis xn por, abund ool (fn) mostly well-cem, Rr vis interool pores

Ls wh-cr-pl gy, fn xln, dns to pr xln por, chalky in pt, foss

<----- 4400 (-1002)  
 Sh black, carb  
 Ls cr, fn xln, dns, foss

Sh gy-grn-red-lav, subsilty & sdy to subargil to subwaxy

4430' spl: 95% shales as above; 05% Wh Ls

7:00 AM, November 26, 2019

\* Nozzled plugged at connection!

Mud Check: Drlg @ 4252':

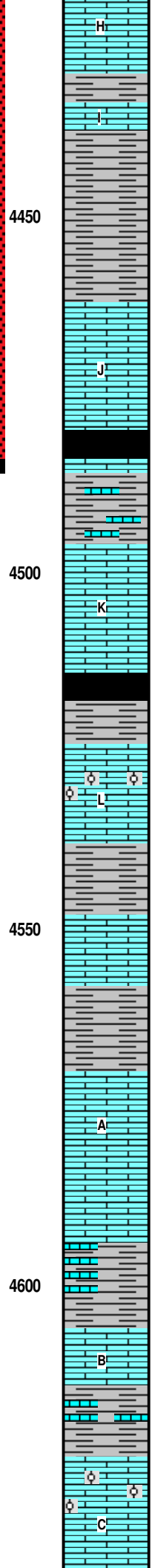
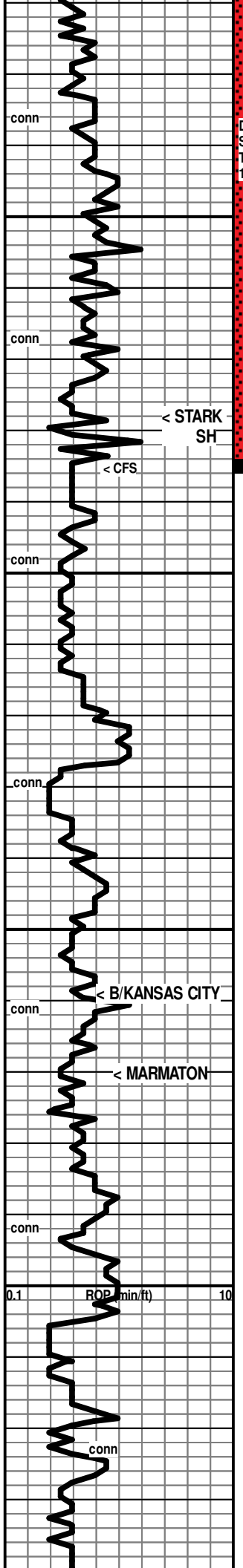
Vis	Wt	WL	LCM	PV	YP
62	9.4	10.0	1	15	20
Chl	Hd	pH	Solids		
2500	40	10.0	7.7		

\* 4373': Shut Down, due to weather and road closures. Circulated approx 18 hours!

7:00 AM, November 27, 2019

Mud Check: Drlg @ 4290':

Vis	Wt	WL	LCM	PV	YP
54	9.0	8.8	1	16	16
Chl	Hd	pH	Solids		
2000	20	10.5	4.9		



4440' spl: 98% Shales as above (poss uphole?); 02% Ls wh, fn xln, dns to pr xln por, sli foss in pt  
**[No Odor, No fluor, Rr pcs with patches of blk spotty stn of resid/gilson, NSFO]**

4450' spl: 98% Shales, red-gy-grn-lav, silty, sdy, subwaxy, subarg; 02% Ls wh-pl gy, fn xln, dns

4460' spl: 98% Shales, red-gy-grn-lav, silty, sdy, subwaxy, subarg; 02% Ls wh-pl gy, fn xln, dns

4470' spl: 95% Shales, red-gy-grn-lav, silty, sdy, subwaxy, subarg; 05% Ls wh-pl gy, fn xln, dns to pr xln por, foss in pt

10% Ls wh-cr, fn xln, mostly dns & pr xln por, some fr xln por, some subchalky pcs, foss; 90% Shales as above  
**[No Odor, Scatt dull fluor, few pcs with spotty to patchy brn stn, some with sli show of brn FO and v. sli gassy, some porous pcs barren]**

<----- 4478 (-1080)

4500' spl: 99% Shales mostly gy-dk gy-blk, some red-grn & lav, silty to sdy in pt; Tr of Ls wh, dns

4510' spl: 90% Shales as above; 10% Ls wh-cr, fn xln, dns, foss

4520' spl: 90% Ls wh-cr-tan, fn xln, dns to pr xln por, foss to abund foss; 10% Shales

Ls wh-cr-pl gy, fn xln, mostly dns, some pr xln por, foss

Sh gy-grnish, some red

Ls wh-cr, fn xln, abund dns to pr xln por, some chalky, foss in pt, ool in pt

Sh gy-grn-red

4550' spl: Ls wh-cr-pl gy, fn xln, pr xln por to dns with scatt pp pores, foss to abund foss  
 <----- 4559 (-1161)  
 Sh red-gy-grn

Sh mostly red, mushy-soft, some gy-grn  
 <----- 4570 (-1172)

Ls cr-tan-pl gy, fn xln, pr xln por to dns, scatt sm transl calcite rhombs, foss

Ls gy, fn xln, abund silty to grainy text, dns

Sh gy

Ls, shaley Ls, Limey shale, gy-pl gy, some silty text to sdy, dns

4600' spl: Ls wh-gy, fn xln, dns, sdy in pt

Sh gy-grn, calc in pt to shaley limestone

Ls wh-cr, fn xln, pr xln por, foss in pt  
**[4630' spl: No Odor, No fluor, Rr pcs with scatt blk spots of resid/gilson stn, NSFO]**

Ls cr-tan-gy, vfn-fn xln, pr xln por to dns, ool in pt, mostly well-cem with scatt interool pores

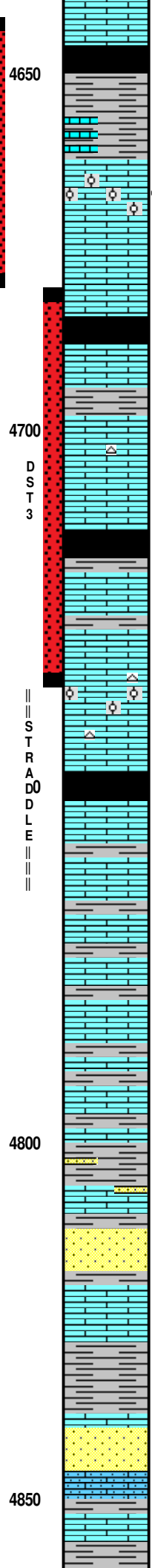
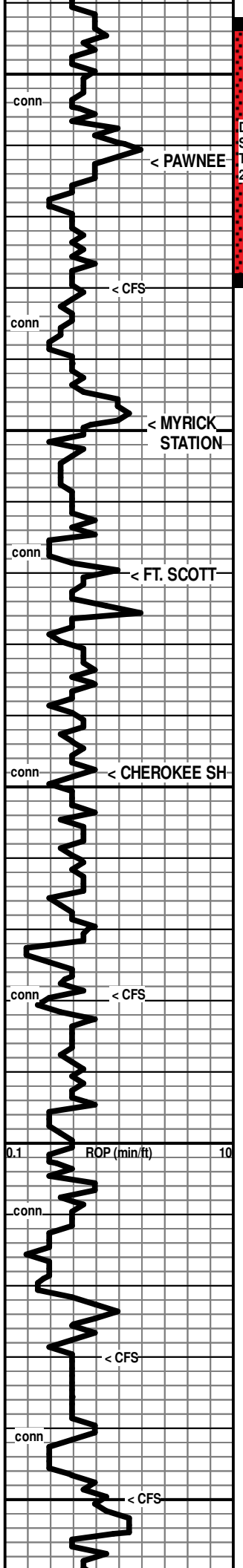
**DST #1: 4396-4485 (LKC H,I,J)**  
 Times: 30-30-30-30  
 \*(slid tool 20 ft)  
 Initial Open: Wk Blow, Built to 1.25" i.b.  
 Final Open: No Blow  
 Rec: 10' mud  
 IHP: 2331 FHP: 2219  
 IFP: 23-25 FFP: 27-27  
 ISIP: 184 FSIP: 104  
 BHT: 132°F

7:00 AM, November 28, 2019  
 \* 15 ft of fill, back on bottom with bit after DST1 @ 4485'!

Mud Check: Drlg @ 4521':

Vis	Wt	WL	LCM	PV	YP
57	9.2	10.0	.5	15	18
Chl	Hd	pH	Solids		
3000	40	9.5	6.3		

**DST #2: 4643-4680 (Pawnee)**  
 Times: 30-30-30-30  
 Initial Open: Wk Blow, built to 1.50" i.b.  
 Final Open: Wk Surf Blow, died 5 min.  
 Rec: 1' mud



Sh gy-black

Sh gy-dk gy  
Ls wh-cr-tan-brn-gy, vfn-fn xln, mostly dns & hard, some softer & chalky, foss in pt

← 4662 (-1264)  
Ls wh-cr, fn xln, pr vis xln por, chalky in pt, foss, ool in pt, Rr scatt interfoss & interool pores  
Show Descr. →

Ls wh-cr-tan, fn xln, dns to pr vis xln por, chalky in pt, foss

Sh black, carb (abund in 4700' spl)

Ls cr-tan-brn-gy, fn xln, dns, foss

Sh gy-dk gy  
← 4699 (-1301)

Ls wh-cr, fn xln, pr xln por to dns in pt, chalky to subchalky in pt, foss, chert: fresh, tan, subtransl, foss

Sh black, carb, (abund in 4730' spl)

← 4720 (-1322)  
Ls wh-cr-tan, fn xln, mostly dns, Rr patches of pr xln por, V Rr pp pores, foss, chalky in pt  
Show Descr. →

Ls cr-tan-gy, vfn-fn xln, mostly dns, some subchalky to chalky, foss

Ls cr-tan-gy, vfn-fn xln, mostly dns, some subchalky to chalky, foss, ool in pt, chert: fresh, tan, transl, spiculitic

← 4748 (-1350)  
Sh black, carb (abund in 4760' spl)

Ls wh-cr-tan-brn-gy, fn xln, mostly dns, some pr xln por, some chalky, foss to abund foss  
Show Descr. →

Ls wh-cr-tan-brn-gy, fn xln, mostly dns, some pr xln por, some chalky, foss to abund foss

Sh gy-dk gy-grn

65% Sh red-gy-grn; 35% Ls wh-cr-tan, fn xln, dns, foss in pt

85% Sh red-gr-grn-brt grn, silty to sdy in pt (slough? from uphole); 15% Ls wh-cr-tan, fn xln, dns, foss

85% Sh red-gr-grn-brt grn, silty to sdy in pt (slough? from uphole); 10% Ls wh-cr-tan, fn xln, dns, foss; 05% Sd brnsh, fn grn, gd sort, subrd, fr-gd fri

Sh glassy-wh, fn-md grn, mix of pr-fr-gd sort, rd-subrd-subang, pr-fr-gd fri, scatt glauc, some qrtz frags, calc/limey in pt, cem in pt

Ls wh-cr-tan,fn xln, mostly dns & hard, some softer & chalky, foss in pt

Sh gy-grn-dk red, some yellow, silty to sdy in pt with some shaley sd

Sh glassy-wh, fn-md grn, mix of pr-fr-gd sort, rd-subrd-subang, pr-fr-gd fri, scatt glauc, some qrtz frags, calc/limey in pt, cem in pt, some sdy limestone

70% Shale, red gy grn, silty to sdy in pt; 20% Ls wh gy vfn-fn

IHP: 2385 FHP: 2327  
IFP: 15-16 FFP: 16-18  
ISIP: 28 FSIP: 28  
BHT: 129°F

[4680' spls: V Fnt Odor, Low % pcs with mod-brt spotty to patchy fluor, Low % pcs with spotty to patchy lt brn stn with trace to v.sli shows of FO on brk, few pcs with Fr show of FO, some v.sli gassy]

7:00 AM, November 29, 2019

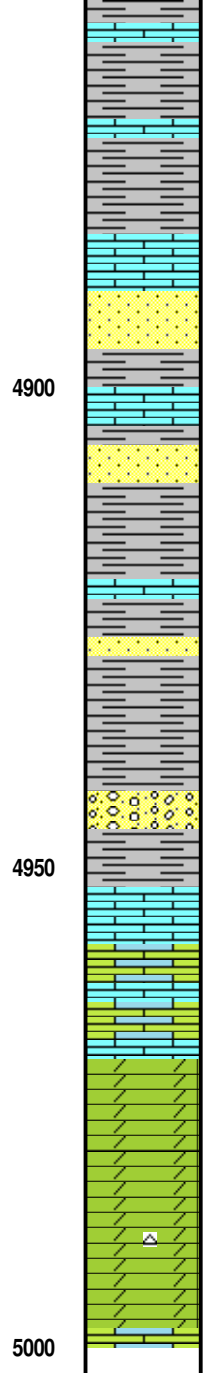
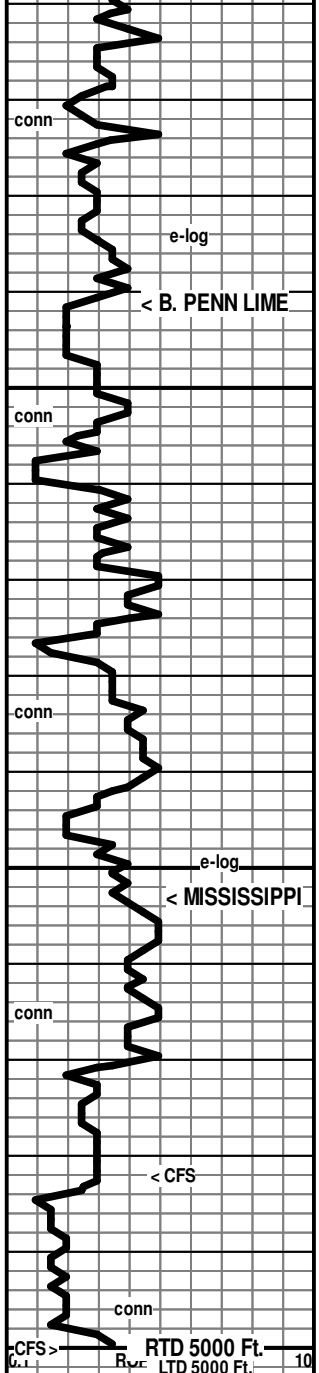
Mud Check: TIH/bit after DST2 @ 4680':  
Vis Wt WL LCM PV YP  
50 9.4 9.6 2 13 14  
Chl Hd pH Solids  
2000 20 10.0 7.7

\* After review of e-logs, it is possible the show in 4730' spl may have originated from the Myrick Station, above?

\* [4730' spl: No Odor, 2-3 pcs per tray with dull fluor and scant spots of brn stn, NSFO]

DST #3: 4680-4736 (Myrick Station)  
\*Stradde Test after logs!  
Times: 30-30-30-30  
Initial Open: Wk Blow, built to 1-1/2" i.b.  
Final Open: No Blow  
Rec: 5' mud  
IHP: 2361 FHP: 2306  
IFP: 18-23 FFP: 26-28  
ISIP: 1009 FSIP: 945  
BHT: 135°F

[No Odor, No fluor, found a few pcs total with trace of brn spots, NSFO]



70% Shales, red-gy-grn, silty to sdy in pt, 20% Ls wh-gy, v fn-fn xln, dns, sdy in pt; 10% Sd, wh-glassy-gy, fn gm, cem to fr intergrnlr por

75% Shales mostly gy-grn, some red; 25% Ls wh-gy-brn, v fn-fn xln, dns; Tr of sd

← 4891 (-1493)

Sd gy, fn gm, gd sort, subrd, fr-gd fri, some glauc, cem in pt; Spls mostly shales as above

4920' sp: 35% Sd wh-gy, fn gm, gd sort, subrd, fr-gd fri, cem in pt; 15% Ls wh-gy, dns; 50% Sh red-gm-gy-yell, subwaxy to earthy to silty

4930' spl: 98% Sh mostly gy-dk gy-black, soft (washes black), some red-gm

4940' spl: 45% Sh mostly gy, some red-gm, silty to sdy in pt; 45% Sd wh-gy, fn gm, gd sort, subrd, fr-gd fri, cem in pt; 10% Ls wh-cr, fn xln, dns

4950' & 4960' spl: 90% Sh as above; 10% Ls cr-tan-gy, fn xln, dns; some Sd as above, trace of chert

← 4953 (-1555)

4970' spl: 50% Ls wh-cr-tan, fn-md xln, dns to pr xln por, foss in pt, sdy in pt, subsucr/dolom in pt; 50% Shales as above

Dol cr-tan, fnxln, sucrosic, pr-fr xln por, scatt pp pores in pt, scattsm vugs, foss in pt, scatt glauc stn

Dol cr-tan, fnxln, sucrosic, pr-fr xln por, abund pp pores in pt, abund sm vugs in pt, foss in pt, scatt glauc specks, some weathered trip chert, spiculitic in pt

7:00 AM, November 30, 2019

Mud Check: Drlg @ 4944':

Vis	Wt	WL	LCM	PV	YP
63	9.4	7.2	2	16	19
Chl	Hd	pH	Solids		
2500	20	11.0	7.3		

RTD Reached at 11:42 PM, November 30, 2019!

4900

4950

5000

5050

