

Most Shale, mar, gn & gy

Shale, gy, gn & mar

LS, cm-off wh, f-vfxln, ool-foss, chky-dns, rP oom por, NS

LS, tan-lt gy, vf-micxln, chky IP, NV por, m hd

Shale, gy-gn, silty

LS, wh-cm, f-vfxln, chky IP, sltly foss, rP vgy-pp por, NS, m hd-dns

LS, off wh-lt gy, vf-micxln, sltly foss, NV por, dns + Cht, gy-tan, opq-tmsl

LS AA+Shale, gy-gn & blk

LS, cm-gy, f-vfxln, sub ool-foss, rP pp por, chky-dns, NV por+LS, gy, fxln, arg, NV por, hd

LS, wh-lt gy, f-vfxln, NV por, chky IP-dns + few pc's Cht, gy-tan, tmsl

LS, gy-tan, fxln, ool, few pc's P iool por, NS, most LS, tan-gy, f-vfxln, chty IP, sltly foss, NV por, dns + Cht gy, opq

Shale, gy-gn

Abnt Cht, gy-tan, opq-tmsl + few pc's Dol, cm-wh, f-vfxln, F ixln por, NS

LS, cm-wh, f-vfxln, chky-cthy IP, NV por, dns

Dol, cm-wh, fxln, F ixln por, NS+LS, tan-wh, fxln, ool-foss, P ipart por, NS & Cht, tan-gy, opq

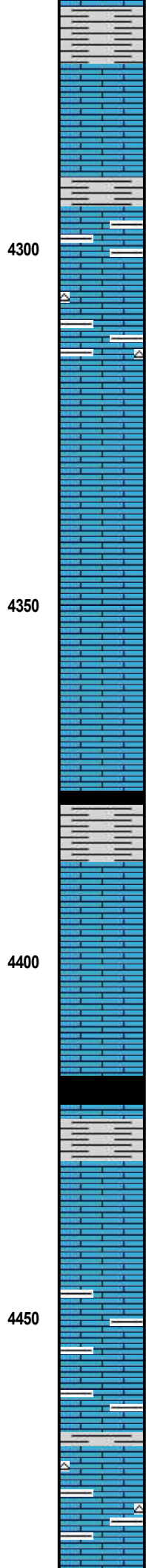
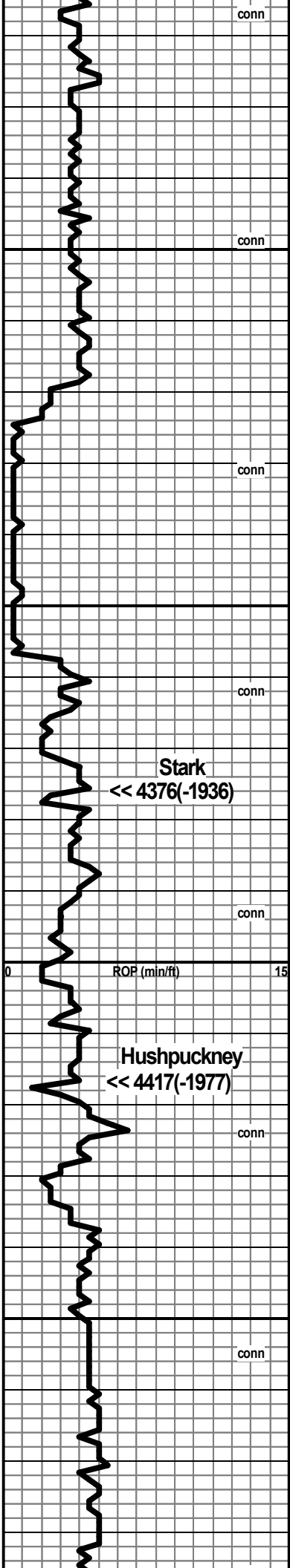
LS, tan-wh, fxln, ool & foss, P ipart & iool por, m hd, NS + few pc's Dol, wh, f-vfxln, F-P ixln por, NS & Cht, gy-tan, opq

Shale, blk, carb (flood 4280 spl)

Vis 49 Wt 9.2 LCM 2#

Ran 16 Stand Short Trip @4174'

Vis 47 Wt 9.2 LCM 1#



Most shale, blk, gy & gn + LS, bm-gy, sub ool, P vgy por, hd, NS

LS, wh-cm, micxn, sharp, NV por, dns + LS, bm-cm, f-vfxn, sltly foss, NV por, hd & Abnt shale, vcol AA

Shale, blk & gn + LS, wh-lt gy, fxn, chky, ool, r P oom por, NS, most NV por, hd

LS, bm-cm, vf-micxn, chty IP, NV por, hd + Shale, blk & gn

LS, cm-wh, fxn, ool, G ooc & oom por, NSFO, N fluor, N odor

AA

LS, cm-wh-bm, fxn, ool, F-G ooc & oom por, NSFO, N fluor, N odor

LS, bm-tan, vf-micxn, ool, NV por, dns

LS, vf-micxn, chty IP, ool, sharp, P oom por, hd, NS

Shale, blk carb

Shale, blk, gy, gn & mar

LS, lt gy, vfxn, arg, NV por

LS, tan-lt gy-wh, f-vfxn, chky-arg, NV por, m hd

LS, gy-tan, vf-micxn, sltly foss, NV por, dns

Shale, blk carb

Shale, gy-gn

LS, gy-bm, vf-fxn, chky IP, sub ool-foss, r P vgy-pp por, NS, hd

LS, wh-lt gy-cm, vfxn, chky-chty IP, NV por, m hd

Most LS, wh-tan, vf-micxn, chky IP, sharp, NV por, hd + Shale, vcol

Abnt Shale, gy + LS, tan-gy, vf-micxn, chky-chty, NV por, m hd

Shale, blk, gy-gn & mar + LS, wh-lt gy, vfxn, sharp, sub ool, NV por, hd + few pc's Cht, gy-bm, opq

AA

Vis 46 Wt 9.2 Fil 7.6 PH 11.0
 Chl 4,950 LCM 1#
 10/31/2019 @ 4296'

Vis 49 Wt 9.4 LCM 1#

Vis 45 Wt 9.5 LCM 1#

Stark
 << 4376(-1936)

Hushpuckney
 << 4417(-1977)

conn

4300

conn

4350

conn

4400

conn

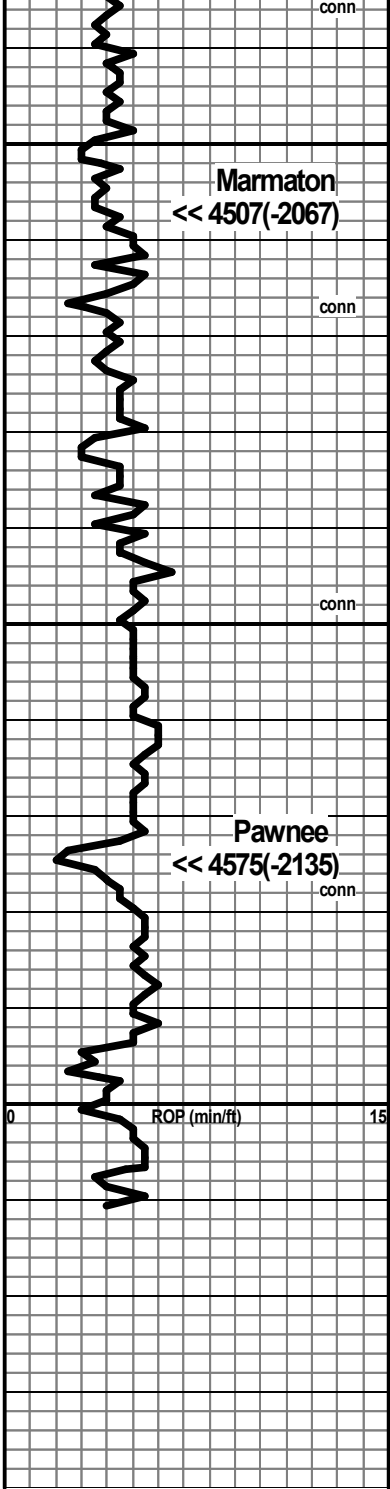
4450

conn

ROP (min/ft)

0

15



Shale, blk sub carb, turq & gy +few pc's pyr

4500

Marmaton
 << 4507(-2067)

conn

LS, gy-tan, f-vfxln, arg, few foss frag + Shale, gy & Stst
 gy-gn

LS, bm-wh, f-vfxln, NV por, chky IP-dns

Shale, blk carb

Shale, gy-gn & blk

conn

4550

LS, cm-tan, vf-micln, stly foss, NV por, dns + Cht,
 tan, omg, vgt, opq-trmsl

LS, wh, f-vfxln, r P pp por, NS, dns

Pawnee
 << 4575(-2135)

conn

Shale, blk carb

Vis 43 Wt 9.3 LCM 1#

0 ROP (min/ft) 15

4600