



PHIL ASKEY  
PETROLEUM GEOLOGIST

**GEOLOGIST'S REPORT**

DRILLING TIME AND SAMPLE LOG

COMPANY Mull Drilling Co., Inc.  
LEASE Muchmore-Thornburg Unit #1-34  
FIELD Chapman  
LOCATION 245' FUL & 2130' FEL  
SEC 34 TWP 15 S RGE 26 W  
COUNTY Gove STATE Kansas  
CONTRACTOR Picfield Drilling Co. #10  
SPUD 10-1-19 COMP 10-17-19  
RTD 4580' LTD 4579'

ELEVATIONS  
KB 2565'  
GL 2558'  
Measurements are from KB

AP# 15-003-22366  
CASING 8 1/2" x 2 1/2"  
SURFACE 8 1/2" x 2 1/2"  
PRODUCTION

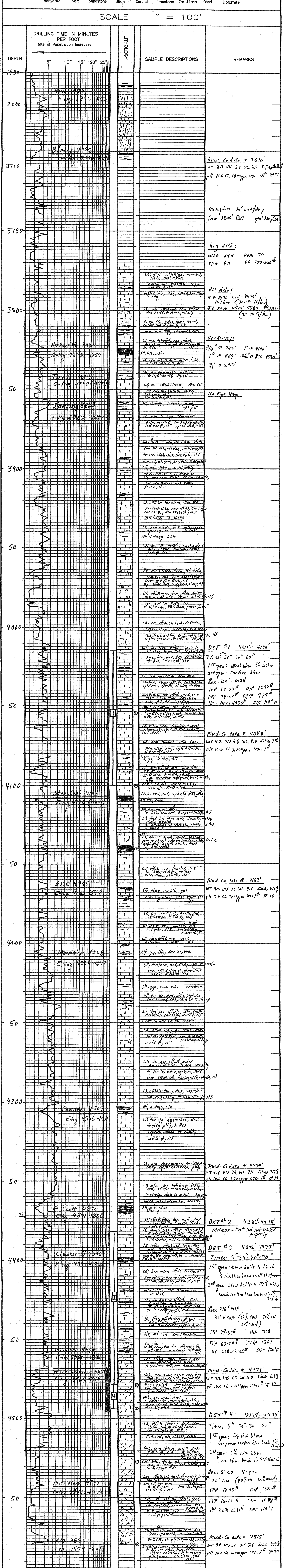
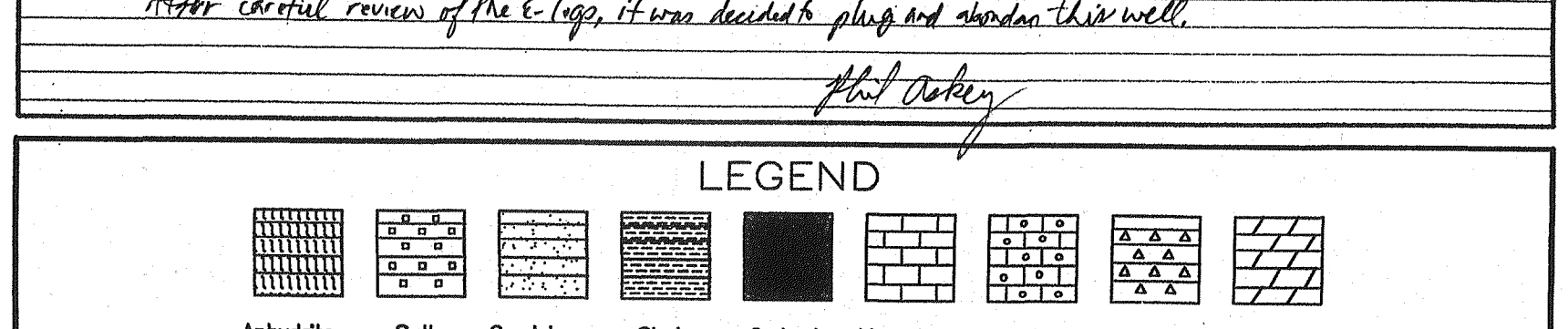
ELECTRICAL SURVEYS  
ELC: Cudarc wires;  
DUL, Seale; Micro;  
TO R/D

SAMPLES EXAMINED FROM 3800' TO R/D  
DRILLING TIME KEPT FROM 1906-2001, 3700' TO R/D  
GEOLOGICAL SUPERVISION FROM 3700' TO R/D/LTD  
GEOLOGIST ON WELL Phil Askey, G.S.

FORMATION TOPS

FORMATION	LOG	SAMPLES +/-	REFERENCE WELL
Hickman	1992-573	199Y	David (Askey)
Cherokee	3822-1557	382Y	Deighan A #1
Clinton	4106-1571	410Y	
St. Louis	4162-1578	416Y	
Waverly	4208-1833	420Y	
Cherokee	4371-1832	437Y	
Clinton	4397-1832	439Y	
Waverly	4469-1909	446Y	
Missouri	4572-1977	457Y	
LTD	4579-2014	458Y	

REMARKS  
*The Mull Drilling Co., Inc. Muchmore-Thornburg Unit #1-34 showed 12' of thinning structurally between the Anhydrite and Missisippian. Whereas previous logs had 6' high to the offset well, Donald Lawson, Deighan A #1, on the main target formation, fair to very fair.*  
*Sample shows in the casing H, I and J zones were DST'd with noncommercial results. The Miss Wagoner dolomite section had 2 1/2' of porosity and good sample shows but was DST'd with low recovery of fluid.*  
*After careful review of the logs, it was decided to plug and abandon this well.*  
*Phil Askey*



COMPANY Mull Drilling Co., Inc. ELEVATION: 2565' KB  
LEASE Muchmore-Thornburg Unit #1-34  
LOCATION 245' FUL & 2130' FEL SEC 34 TWP 15 S RGE 26 W  
COUNTY Gove STATE Kansas