

KANSAS CORPORATION COMMISSION
OIL & GAS CONSERVATION DIVISION

TEMPORARY ABANDONMENT WELL APPLICATION

OPERATOR: License# _____
 Name: _____
 Address 1: _____
 Address 2: _____
 City: _____ State: _____ Zip: _____ + _____
 Contact Person: _____
 Phone: (_____) _____
 Contact Person Email: _____
 Field Contact Person: _____
 Field Contact Person Phone: (_____) _____

API No. 15- _____
 Spot Description: _____
 _____ - _____ - _____ - _____ Sec. _____ Twp. _____ S. R. _____ E W
 _____ feet from N / S Line of Section
 _____ feet from E / W Line of Section
 GPS Location: Lat: _____, Long: _____
(e.g. xx.xxxxx) (e.g. -xxx.xxxxx)
 Datum: NAD27 NAD83 WGS84
 County: _____ Elevation: _____ GL KB
 Lease Name: _____ Well #: _____
 Well Type: (check one) Oil Gas OG WSW Other: _____
 SWD Permit #: _____ ENHR Permit #: _____
 Gas Storage Permit #: _____
 Spud Date: _____ Date Shut-In: _____

	Conductor	Surface	Production	Intermediate	Liner	Tubing
Size						
Setting Depth						
Amount of Cement						
Top of Cement						
Bottom of Cement						

Casing Fluid Level from Surface: _____ How Determined? _____ Date: _____
 Casing Squeeze(s): _____ to _____ w / _____ sacks of cement, _____ to _____ w / _____ sacks of cement. Date: _____
(top) (bottom) (top) (bottom)
 Do you have a valid Oil & Gas Lease? Yes No
 Depth and Type: Junk in Hole at _____ Tools in Hole at _____ Casing Leaks: Yes No Depth of casing leak(s): _____
(depth) (depth)
 Type Completion: ALT. I ALT. II Depth of: DV Tool: _____ w / _____ sacks of cement Port Collar: _____ w / _____ sack of cement
(depth) (depth)
 Packer Type: _____ Size: _____ Inch Set at: _____ Feet
 Total Depth: _____ Plug Back Depth: _____ Plug Back Method: _____

Geological Data:

Formation Name	Formation Top	Formation Base	Completion Information
1. _____	At: _____	to _____ Feet	Perforation Interval _____ to _____ Feet or Open Hole Interval _____ to _____ Feet
2. _____	At: _____	to _____ Feet	Perforation Interval _____ to _____ Feet or Open Hole Interval _____ to _____ Feet

UNDER PENALTY OF PERJURY I HEREBY ATTEST THAT THE INFORMATION CONTAINED HEREIN IS TRUE AND CORRECT TO THE BEST OF MY KNOWLEDGE

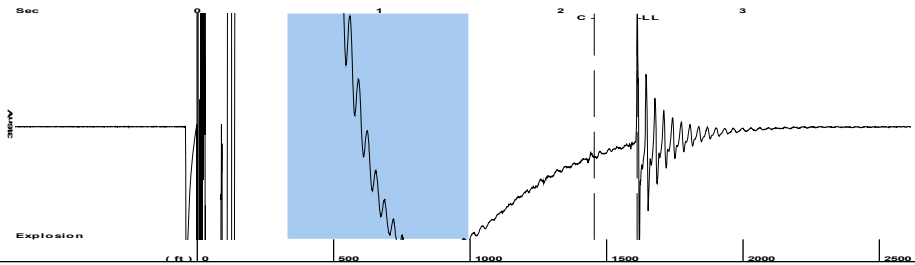
Submitted Electronically

Do NOT Write in This Space - KCC USE ONLY	Date Tested: _____	Results: _____	Date Plugged: _____	Date Repaired: _____	Date Put Back in Service: _____
	Review Completed by: _____ Comments: _____				
TA Approved: <input type="checkbox"/> Yes <input type="checkbox"/> Denied Date: _____					

Mail to the Appropriate KCC Conservation Office:

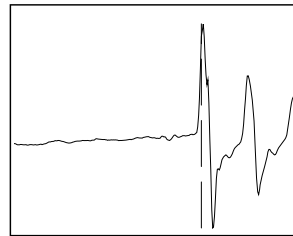
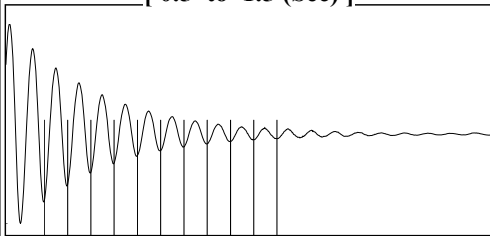
	KCC District Office #1 - 210 E. Frontview, Suite A, Dodge City, KS 67801	Phone 620.682.7933
	KCC District Office #2 - 3450 N. Rock Road, Building 600, Suite 601, Wichita, KS 67226	Phone 316.337.7400
	KCC District Office #3 - 137 E. 21st St., Chanute, KS 66720	Phone 620.902.6450
	KCC District Office #4 - 2301 E. 13th Street, Hays, KS 67601-2651	Phone 785.261.6250

Group: MyWells Well: Koogler A 298 (acquired on: 12/21/21 12:28:43)



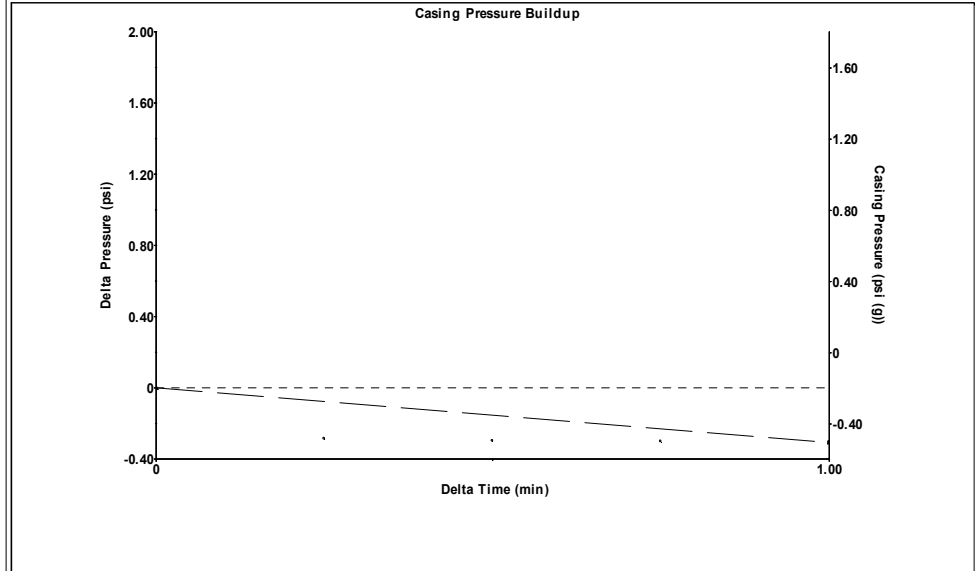
Filter Type High Pass Automatic Collar Count Yes Time 2.42 sec
 Manual Acoustic Velo 1326.36 ft/s Manual JTS/sec 20.9205 Joints 50.8403 Jts
 Depth 1611.64 ft

[0.5 to 1.5 (Sec)]



Analysis Method: Automatic

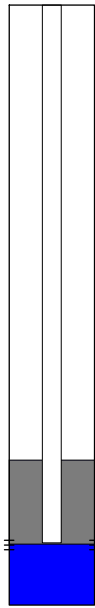
Group: MyWells Well: Koogler A 298 (acquired on: 12/21/21 12:28:43)



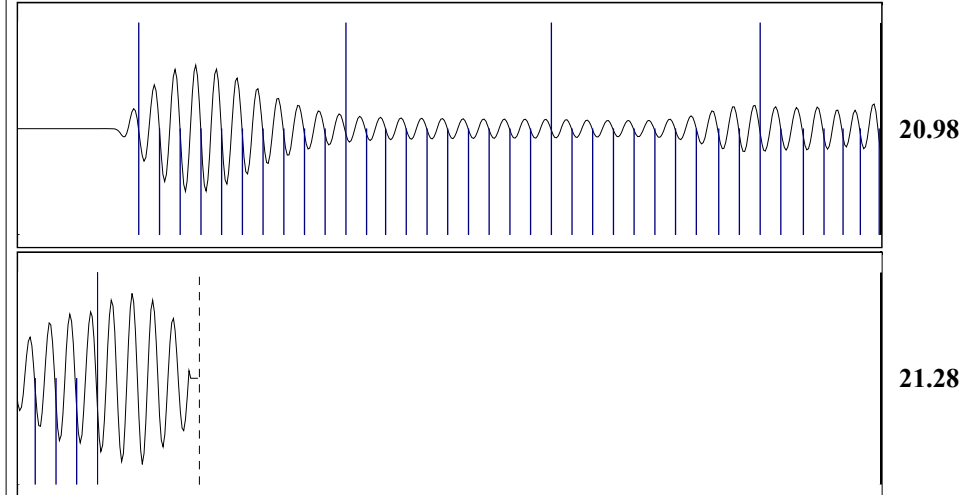
Change in Pressure -0.31 psi PT 12849
 Change in Time 1.00 min Range 0 - ? psi

Group: MyWells Well: Koogler A 298 (acquired on: 12/21/21 12:28:43)

Production		Potential		Casing Pressure		Producing	
Oil	- * -	0.0	BBL/D	-0.2	psi (g)	Annular Gas Flow	0 Mscf/D
Water	- * -	0.0	BBL/D	-0.307	psi	% Liquid	100 %
Gas	- * -	0.0	Mscf/D	1.00	min		
IPR Method	Vogel			Gas/Liquid Interface Pressure	0.3	psi (g)	
PBHP/SBHP	0.89			Liquid Level Depth	1611.64	ft	
Production Efficiency	18.7			Tubing Intake Depth	1955.00	ft	
Oil	36 deg.API			Formation Depth	1963.00	ft	
Water	1.05 Sp.Gr.H2O						
Gas	0.68 Sp.Gr.AIR						
Acoustic Velocity	1331.93 ft/s						
Formation Submergence							
Total Gaseous Liquid Column HT (TVD)		343	ft	Tubing Intake	119.8	psi (g)	
Equivalent Gas Free Liquid HT (TVD)		343	ft	Producing BHP	123.5	psi (g)	
Acoustic Test				Static BHP	140.4	psi (g)	



Group: MyWells Well: Koogler A 298 (acquired on: 12/21/21 12:28:43)



Acoustic Velocity 1331.93 ft/s Joints counted 40
 Joints Per Second 21.0084 jts/sec Joints to liquid level 50.8403
 Depth to liquid level 1611.64 ft Filter Width 18.9205 22.9205
 Automatic Collar Count Yes Time to 1st Collar 0.28 2.184

Conservation Division
District Office No. 2
3450 N. Rock Road
Building 600, Suite 601
Wichita, KS 67226



Phone: 316-337-7400
Fax: 316-630-4005
<http://kcc.ks.gov/>

Andrew J. French, Chairperson
Dwight D. Keen, Commissioner
Susan K. Duffy, Commissioner

Laura Kelly, Governor

January 07, 2022

Coleman Townes
Vess Oil Corporation
1700 WATERFRONT PKWY BLDG 500
WICHITA, KS 67206-6619

Re: Temporary Abandonment
API 15-015-23444-00-02
KOOGLER A 298
SE/4 Sec.17-26S-05E
Butler County, Kansas

Dear Coleman Townes:

"Your temporary abandonment (TA) application for the well listed above has been approved. In accordance with K.A.R. 82-3-111 the TA status of this well will expire 01/07/2023.

- * If you return this well to service or plug it, please notify the District Office.
- * If you sell this well you are required to file a Transfer of Operator form, T-1.
- * If the well will remain temporarily abandoned, you must submit a new TA application, CP-111, before 01/07/2023.

You may contact me at the number above if you have questions.

Very truly yours,

Neal Rupp ECRS"