

KANSAS CORPORATION COMMISSION
OIL & GAS CONSERVATION DIVISION

Form must be Typed
Form must be signed

TEMPORARY ABANDONMENT WELL APPLICATION

All blanks must be complete

OPERATOR: License#
Name:
Address 1:
Address 2:
City: State: Zip:
Contact Person:
Phone:
Contact Person Email:
Field Contact Person:
Field Contact Person Phone:

API No. 15-
Spot Description:
Sec. Twp. S. R.
GPS Location: Lat: Long:
Datum: NAD27 NAD83 WGS84
County: Elevation:
Lease Name: Well #:
Well Type: Oil Gas OG WSW Other:
SWD Permit #: ENHR Permit #:
Gas Storage Permit #:
Spud Date: Date Shut-In:

Table with 7 columns: Conductor, Surface, Production, Intermediate, Liner, Tubing. Rows include Size, Setting Depth, Amount of Cement, Top of Cement, Bottom of Cement.

Casing Fluid Level from Surface: How Determined? Date:
Casing Squeeze(s): to w / sacks of cement, to w / sacks of cement. Date:
Do you have a valid Oil & Gas Lease? Yes No
Depth and Type: Junk in Hole at Tools in Hole at Casing Leaks: Yes No Depth of casing leak(s):
Type Completion: ALT. I ALT. II Depth of: DV Tool: w / sacks of cement Port Collar: w / sack of cement
Packer Type: Size: Inch Set at: Feet
Total Depth: Plug Back Depth: Plug Back Method:

Geological Data:

Table with 4 columns: Formation Name, Formation Top, Formation Base, Completion Information. Rows 1 and 2.

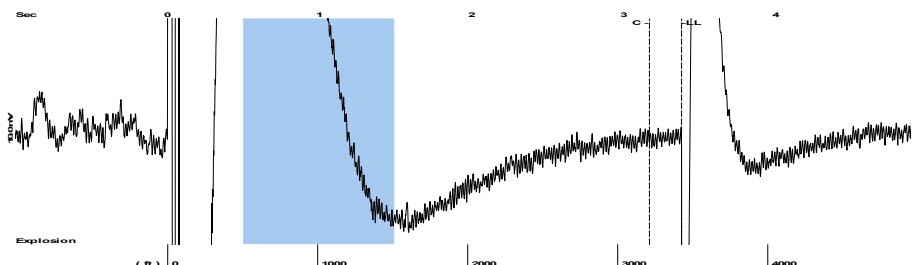
UNDER PENALTY OF PERJURY I HEREBY ATTEST THAT THE INFORMATION CONTAINED HEREIN IS TRUE AND CORRECT TO THE BEST OF MY KNOWLEDGE

Submitted Electronically

Do NOT Write in This Space - KCC USE ONLY
Date Tested: Results: Date Plugged: Date Repaired: Date Put Back in Service:
Review Completed by: Comments:
TA Approved: Yes Denied Date:

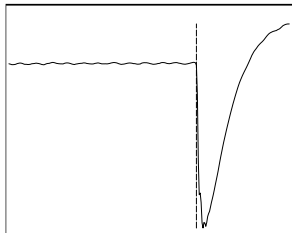
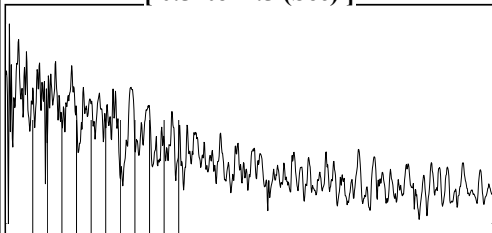
Mail to the Appropriate KCC Conservation Office:

Table with 2 columns: Office Address, Phone. Rows for KCC District Office #1, #2, #3, #4.



Filter Type High Pass Automatic Collar Count Yes Time 3.379 sec
 Manual Acoustic Veloc 2113.33 ft/s Manual JTS/sec 33.3333 Joints 108.049 Jts
 Depth 3425.17 ft

[0.5 to 1.5 (Sec)]

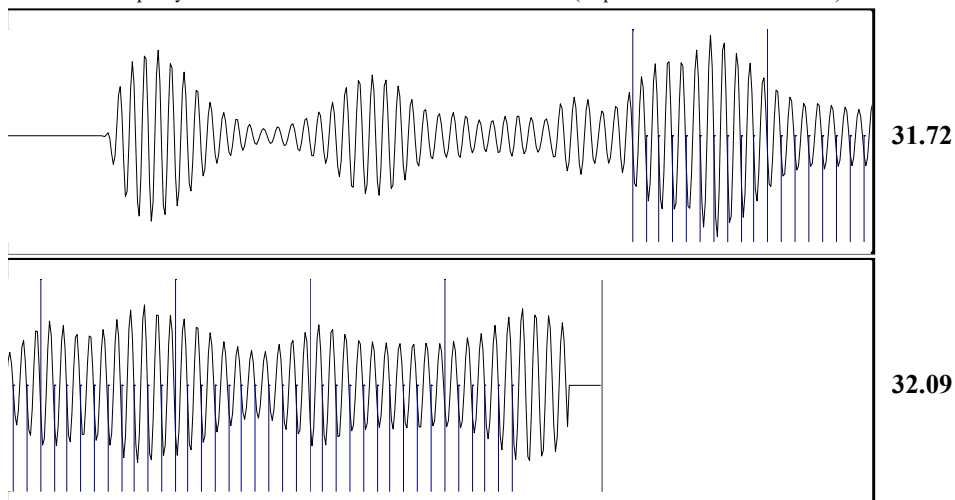


Analysis Method: Automatic

NO PRESSURE DATA AVAILABLE

Change in Pressure 0.00 psi NONE
 Range 0 - ? psi
 Change in Time 0.00 min

Production		Potential		Casing Pressure		Producing	
Oil	- * -	- * -	BBL/D	0.0	psi (g)	Annular	
Water	- * -	- * -	BBL/D	Casing Pressure Buildup	- * -	Gas Flow	- * - Mscf/D
Gas	- * -	- * -	Mscf/D	- * -	psi	% Liquid	100 %
				- * -	min		
IPR Method	Vogel	Gas/Liquid Interface Pressure	- * -	psi (g)			
PBHP/SBHP	- * -	Liquid Level Depth	- * -	ft			
Production Efficiency	0.0	Pump Intake Depth	- * -	ft			
Oil	40 deg.API	Formation Depth	- * -	ft			
Water	1.05 Sp.Gr.H2O						
Gas	0.55 Sp.Gr.AIR						
Acoustic Velocity	2027.33 ft/s						
Formation Submergence							
Total Gaseous Liquid Column HT (TVD)		- * -	ft				
Equivalent Gas Free Liquid HT (TVD)		- * -	ft				
Acoustic Test							



Acoustic Velocity 2027.33 ft/s Joints counted 55
 Joints Per Second 31.9767 jts/sec Joints to liquid level 108.049
 Depth to liquid level 3425.17 ft Filter Width 31.3333 35.3333
 Automatic Collar Count Yes Time to 1st Collar 1.448 3.168

January 13, 2022

Jose Reyes
American Warrior, Inc.
PO BOX 399
GARDEN CITY, KS 67846-0399

Re: Temporary Abandonment
API 15-081-21867-00-00
TEEGERSTROM TRUST 13 #1
SE/4 Sec.13-30S-32W
Haskell County, Kansas

Dear Jose Reyes:

"Your temporary abandonment (TA) application for the well listed above has been approved. In accordance with K.A.R. 82-3-111 the TA status of this well will expire 01/13/2023.

- * If you return this well to service or plug it, please notify the District Office.
- * If you sell this well you are required to file a Transfer of Operator form, T-1.
- * If the well will remain temporarily abandoned, you must submit a new TA application, CP-111, before 01/13/2023.

You may contact me at the number above if you have questions.

Very truly yours,

Michael Maier"