

KANSAS CORPORATION COMMISSION  
OIL & GAS CONSERVATION DIVISION

TEMPORARY ABANDONMENT WELL APPLICATION

OPERATOR: License# \_\_\_\_\_  
 Name: \_\_\_\_\_  
 Address 1: \_\_\_\_\_  
 Address 2: \_\_\_\_\_  
 City: \_\_\_\_\_ State: \_\_\_\_\_ Zip: \_\_\_\_\_ + \_\_\_\_\_  
 Contact Person: \_\_\_\_\_  
 Phone: ( \_\_\_\_\_ ) \_\_\_\_\_  
 Contact Person Email: \_\_\_\_\_  
 Field Contact Person: \_\_\_\_\_  
 Field Contact Person Phone: ( \_\_\_\_\_ ) \_\_\_\_\_

API No. 15- \_\_\_\_\_  
 Spot Description: \_\_\_\_\_  
 \_\_\_\_\_ - \_\_\_\_\_ - \_\_\_\_\_ - \_\_\_\_\_ Sec. \_\_\_\_\_ Twp. \_\_\_\_\_ S. R. \_\_\_\_\_  E  W  
 \_\_\_\_\_ feet from  N /  S Line of Section  
 \_\_\_\_\_ feet from  E /  W Line of Section  
 GPS Location: Lat: \_\_\_\_\_, Long: \_\_\_\_\_  
(e.g. xx.xxxxx) (e.g. -xxx.xxxxx)  
 Datum:  NAD27  NAD83  WGS84  
 County: \_\_\_\_\_ Elevation: \_\_\_\_\_  GL  KB  
 Lease Name: \_\_\_\_\_ Well #: \_\_\_\_\_  
 Well Type: (check one)  Oil  Gas  OG  WSW  Other: \_\_\_\_\_  
 SWD Permit #: \_\_\_\_\_  ENHR Permit #: \_\_\_\_\_  
 Gas Storage Permit #: \_\_\_\_\_  
 Spud Date: \_\_\_\_\_ Date Shut-In: \_\_\_\_\_

	Conductor	Surface	Production	Intermediate	Liner	Tubing
Size						
Setting Depth						
Amount of Cement						
Top of Cement						
Bottom of Cement						

Casing Fluid Level from Surface: \_\_\_\_\_ How Determined? \_\_\_\_\_ Date: \_\_\_\_\_  
 Casing Squeeze(s): \_\_\_\_\_ to \_\_\_\_\_ w / \_\_\_\_\_ sacks of cement, \_\_\_\_\_ to \_\_\_\_\_ w / \_\_\_\_\_ sacks of cement. Date: \_\_\_\_\_  
(top) (bottom) (top) (bottom)  
 Do you have a valid Oil & Gas Lease?  Yes  No  
 Depth and Type:  Junk in Hole at \_\_\_\_\_  Tools in Hole at \_\_\_\_\_ Casing Leaks:  Yes  No Depth of casing leak(s): \_\_\_\_\_  
(depth) (depth)  
 Type Completion:  ALT. I  ALT. II Depth of:  DV Tool: \_\_\_\_\_ w / \_\_\_\_\_ sacks of cement  Port Collar: \_\_\_\_\_ w / \_\_\_\_\_ sack of cement  
(depth) (depth)  
 Packer Type: \_\_\_\_\_ Size: \_\_\_\_\_ Inch Set at: \_\_\_\_\_ Feet  
 Total Depth: \_\_\_\_\_ Plug Back Depth: \_\_\_\_\_ Plug Back Method: \_\_\_\_\_

**Geological Data:**

Formation Name	Formation Top	Formation Base	Completion Information
1. _____	At: _____	to _____ Feet	Perforation Interval _____ to _____ Feet or Open Hole Interval _____ to _____ Feet
2. _____	At: _____	to _____ Feet	Perforation Interval _____ to _____ Feet or Open Hole Interval _____ to _____ Feet

UNDER PENALTY OF PERJURY I HEREBY ATTEST THAT THE INFORMATION CONTAINED HEREIN IS TRUE AND CORRECT TO THE BEST OF MY KNOWLEDGE

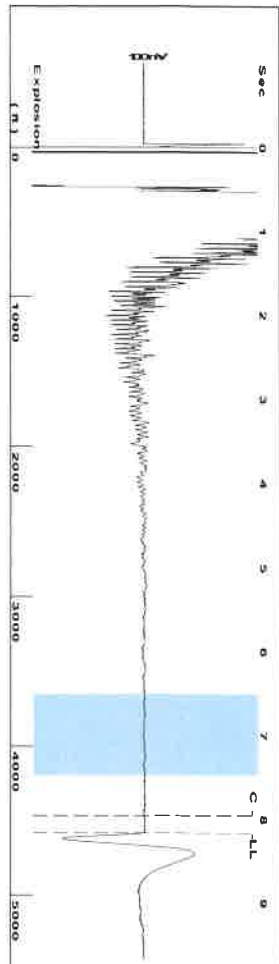
Submitted Electronically

<b>Do NOT Write in This Space - KCC USE ONLY</b>	Date Tested: _____	Results: _____	Date Plugged: _____	Date Repaired: _____	Date Put Back in Service: _____
	Review Completed by: _____ Comments: _____				
TA Approved: <input type="checkbox"/> Yes <input type="checkbox"/> Denied Date: _____					

Mail to the Appropriate KCC Conservation Office:

	KCC District Office #1 - 210 E. Frontview, Suite A, Dodge City, KS 67801	Phone 620.682.7933
	KCC District Office #2 - 3450 N. Rock Road, Building 600, Suite 601, Wichita, KS 67226	Phone 316.337.7400
	KCC District Office #3 - 137 E. 21st St., Chanute, KS 66720	Phone 620.902.6450
	KCC District Office #4 - 2301 E. 13th Street, Hays, KS 67601-2651	Phone 785.261.6250

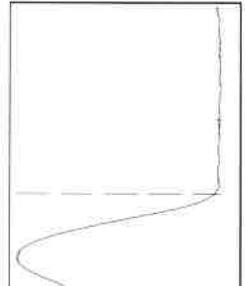
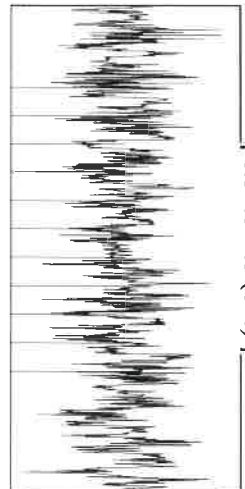
Group: EDISON OPERATING Well: CONRARDY B 4-1 (acquired on: 01/05/22 12:52:45 )



Filter Type High Pass Automatic Collar Count Yes  
 Manual Acoustic Velo 1083.76 ft/s Manual JTS/sec 17.094

Time 8.158 sec  
 Joints 144.54 Jts  
 Depth 4581.91 ft

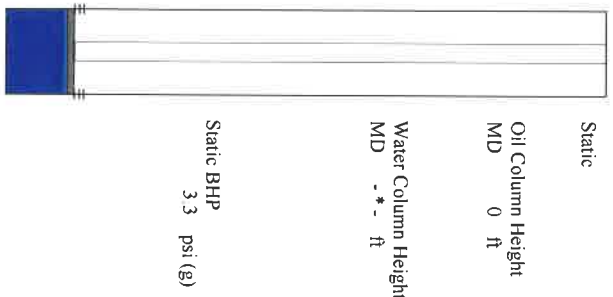
6.5 to 7.5 (Sec)



**Analysis Method: Automatic**

Group: EDISON OPERATING Well: CONRARDY B 4-1 (acquired on: 01/05/22 12:52:45 )

Production	Potential	Casing Pressure	Static
Oil -*- BBL/D	BBL/D	1.1 psi (g)	Oil Column Height MD 0 ft
Water -*- BBL/D	BBL/D	-0.1 psi	Water Column Height MD -* - ft
Gas -*- Mscf/D	Mscf/D	0.25 min	
IPR Method Vogel	Vogel	Gas/Liquid Interface Pressure 3.3 psi (g)	
PBHP/SBHP		Liquid Level Depth 4581.91 ft	
Production Efficiency 0.0		Pump Intake Depth 4510.00 ft	
Oil 40 deg API		Formation Depth 4464.00 ft	
Water 1.05 Sp.Gr.H2O			
Gas 0.88 Sp.Gr.AIR			
Acoustic Velocity 1123.29 ft/s			



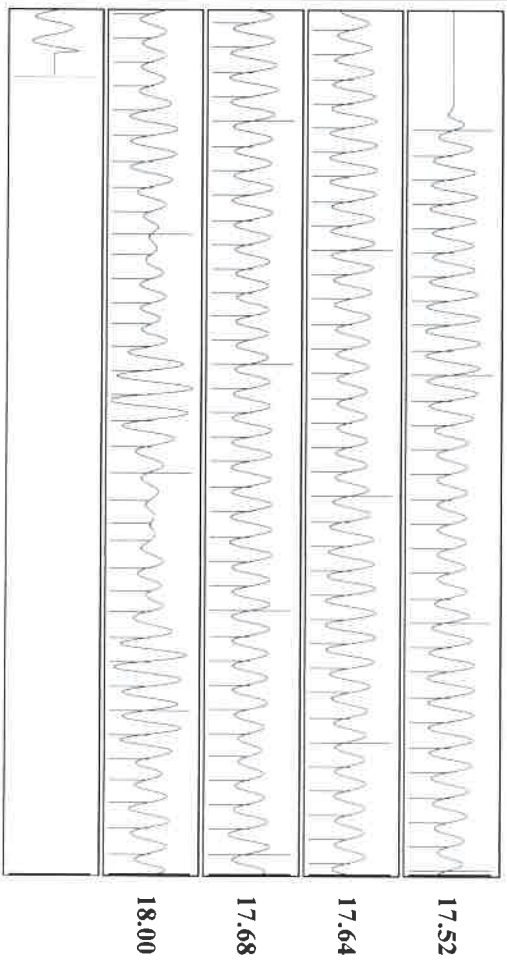
Group: EDISON OPERATING Well: CONRARDY B 4-1 (acquired on: 01/05/22 12:52:45 )

**NO PRESSURE DATA AVAILABLE**

Change in Pressure 0.00 psi PT 19274  
 Change in Time 0.00 min Range

0 - ? psi

Group: EDISON OPERATING Well: CONRARDY B 4-1 (acquired on: 01/05/22 12:52:45 )



Parameter	Value	Unit	Parameter	Value	Unit
Acoustic Velocity	1123.29	ft/s	Joints counted	136	
Joints Per Second	17.7176	fts/sec	Joints to liquid level	144.54	
Depth to liquid level	4581.91	ft	Filter Width	15.094	
Automatic Collar Count	Yes		Time to 1st Collar	0.276	

January 19, 2022

Brian J McCoy  
Edison Operating Company LLC  
8100 E. 22ND ST. N., BLDG 1900  
WICHITA, KS 67226

Re: Temporary Abandonment  
API 15-077-00851-00-00  
CONRARDY B 4-1  
NE/4 Sec.01-31S-09W  
Harper County, Kansas

Dear Brian J McCoy:

"Your temporary abandonment (TA) application for the well listed above has been approved. In accordance with K.A.R. 82-3-111 the TA status of this well will expire 08/04/2022.

- \* If you return this well to service or plug it, please notify the District Office.
- \* If you sell this well you are required to file a Transfer of Operator form, T-1.
- \* If the well will remain temporarily abandoned, you must submit a new TA application, CP-111, before 08/04/2022.

You may contact me at the number above if you have questions.

Very truly yours,

Scott Schmidt, ECRS"