

KANSAS CORPORATION COMMISSION
OIL & GAS CONSERVATION DIVISION

TEMPORARY ABANDONMENT WELL APPLICATION

OPERATOR: License#
Name:
Address 1:
Address 2:
City: State: Zip:
Contact Person:
Phone:
Contact Person Email:
Field Contact Person:
Field Contact Person Phone:

API No. 15-
Spot Description:
Sec. Twp. S. R.
GPS Location: Lat, Long
Datum: NAD27, NAD83, WGS84
County: Elevation:
Lease Name: Well #:
Well Type: Oil, Gas, OG, WSW, Other
SWD Permit #: ENHR Permit #:
Gas Storage Permit #:
Spud Date: Date Shut-In:

Table with 7 columns: Conductor, Surface, Production, Intermediate, Liner, Tubing. Rows include Size, Setting Depth, Amount of Cement, Top of Cement, Bottom of Cement.

Casing Fluid Level from Surface: How Determined? Date:
Casing Squeeze(s): to w / sacks of cement, to w / sacks of cement. Date:
Do you have a valid Oil & Gas Lease? Yes No
Depth and Type: Junk in Hole at Tools in Hole at Casing Leaks: Yes No Depth of casing leak(s):
Type Completion: ALT. I ALT. II Depth of: DV Tool: w / sacks of cement Port Collar: w / sack of cement
Packer Type: Size: Inch Set at: Feet
Total Depth: Plug Back Depth: Plug Back Method:

Geological Data:

Table with 4 columns: Formation Name, Formation Top, Formation Base, Completion Information. Rows 1 and 2.

UNDER PENALTY OF PERJURY I HEREBY ATTEST THAT THE INFORMATION CONTAINED HEREIN IS TRUE AND CORRECT TO THE BEST OF MY KNOWLEDGE

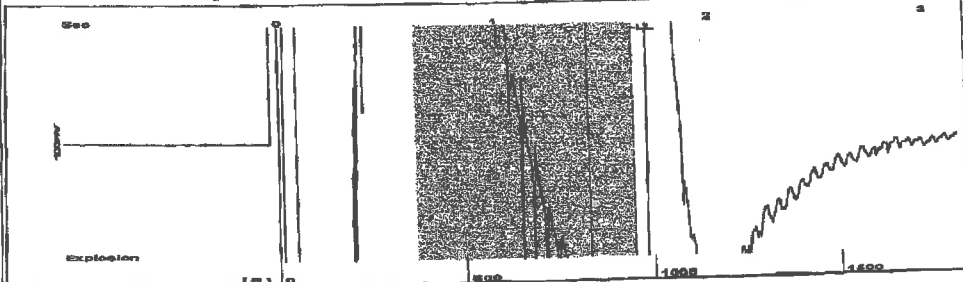
Submitted Electronically

Do NOT Write in This Space - KCC USE ONLY
Date Tested: Results: Date Plugged: Date Repaired: Date Put Back in Service:
Review Completed by: Comments:
TA Approved: Yes Denied Date:

Mail to the Appropriate KCC Conservation Office:

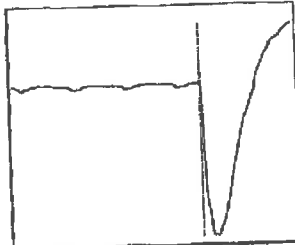
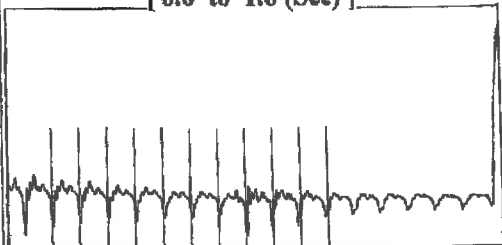
Table with 3 columns: District Office #, Address, Phone. Rows 1-4.

Group: Radium Well: Smith D 1-30 (acquired on: 01/13/22 12:50:38)



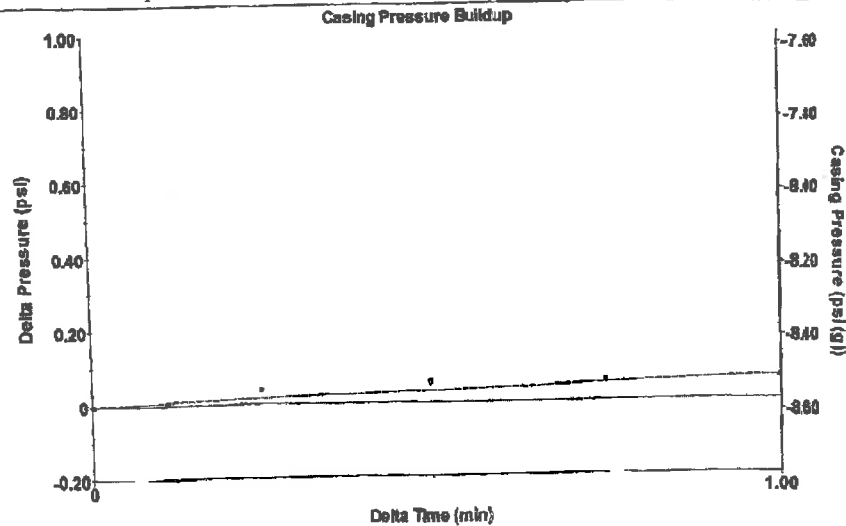
Filter Type High Pass Automatic Collar Count Yes Time 1.641 sec
 Manual Acoustic Velocity 150.71 ft/s Manual JTS/sec 17.8571 Joints 29.4036 Jts
 Depth 947.38 ft

[0.6 to 1.6 (Sec)]



Analysis Method: Automatic

Group: Radium Well: Smith D 1-30 (acquired on: 01/13/22 12:50:38)



Change in Pressure 0.06 psi PT13440
 Range 0.0 psi
 Change in Time 1.00 min

Group: Radium Well: Smith D 1-30 (acquired on: 01/13/22 12:50:38)

Production Current Potential
 Oil -*- BBL/D
 Water -*- BBL/D
 Gas -*- Mscf/D

IPR Method Vogel
 PBHP/SBHP -*-
 Production Efficiency 0.0

Oil 40 deg.API
 Water 1.05 Sp.Gr.H2O
 Gas 0.82 Sp.Gr.AIR

Acoustic Velocity 1154.64 ft/s

Formation Submergence
 Total Gaseous Liquid Column HT (TVD) 2985 ft
 Equivalent Gas Free Liquid HT (TVD) 2982 ft

Acoustic Test

Casing Pressure -8.6 psi (g)
 Casing Pressure Buildup 0.062 psi
 1.00 min
 Gas/Liquid Interface Pressure -8.4 psi (g)

Liquid Level Depth 947.38 ft

Pump Intake Depth 3932.00 ft

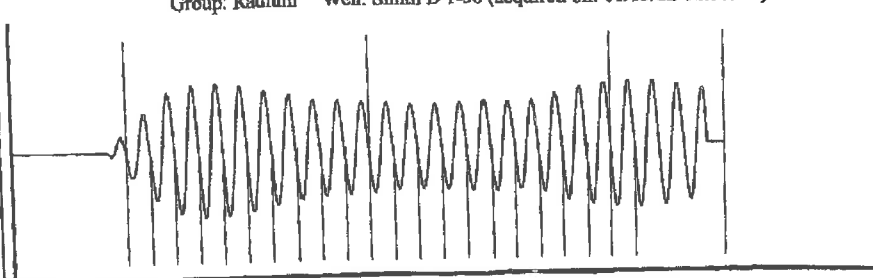
Formation Depth 3779.00 ft



Producing
 Annular Gas Flow 0 Mscf/D
 % Liquid 100 %

Pump Intake 975.0 psi (g)
 Producing BHP 927.6 psi (g)
 Static BHP -*- psi (g)

Group: Radium Well: Smith D 1-30 (acquired on: 01/13/22 12:50:38)



Acoustic Velocity 1154.64 ft/s Joints counted 21
 Joints Per Second 17.9181 jts/sec Joints to liquid level 29.4036
 Depth to liquid level 947.383 ft Filter Width 15.8571 19.8571
 Automatic Collar Count Yes Time to 1st Collar 0.264 1.436

Conservation Division
District Office No. 4
2301 E. 13th Street
Hays, KS 67601-2651



Phone: 785-261-6250
Fax: 785-625-0564
<http://kcc.ks.gov/>

Dwight D. Keen, Chair
Susan K. Duffy, Commissioner
Andrew J. French, Commissioner

Laura Kelly, Governor

January 19, 2022

Loveness Mpanje
F. G. Holl Company L.L.C.
9431 E CENTRAL STE 100
WICHITA, KS 67206-2563

Re: Temporary Abandonment
API 15-009-25932-00-03
SMITH D. 1-30
NE/4 Sec.30-20S-15W
Barton County, Kansas

Dear Loveness Mpanje:

"Your temporary abandonment (TA) application for the well listed above has been approved. In accordance with K.A.R. 82-3-111 the TA status of this well will expire 01/19/2023.

- * If you return this well to service or plug it, please notify the District Office.
- * If you sell this well you are required to file a Transfer of Operator form, T-1.
- * If the well will remain temporarily abandoned, you must submit a new TA application, CP-111, before 01/19/2023.

You may contact me at the number above if you have questions.

Very truly yours,

RICHARD WILLIAMS"