

KANSAS CORPORATION COMMISSION
OIL & GAS CONSERVATION DIVISION

TEMPORARY ABANDONMENT WELL APPLICATION

OPERATOR: License# \_\_\_\_\_
Name: \_\_\_\_\_
Address 1: \_\_\_\_\_
Address 2: \_\_\_\_\_
City: \_\_\_\_\_ State: \_\_\_\_\_ Zip: \_\_\_\_\_ + \_\_\_\_\_
Contact Person: \_\_\_\_\_
Phone:( \_\_\_\_\_ ) \_\_\_\_\_
Contact Person Email: \_\_\_\_\_
Field Contact Person: \_\_\_\_\_
Field Contact Person Phone: ( \_\_\_\_\_ ) \_\_\_\_\_

API No. 15- \_\_\_\_\_
Spot Description: \_\_\_\_\_
- - - - - Sec. \_\_\_\_\_ Twp. \_\_\_\_\_ S. R. \_\_\_\_\_  E  W
\_\_\_\_\_ feet from  N /  S Line of Section
\_\_\_\_\_ feet from  E /  W Line of Section
GPS Location: Lat: \_\_\_\_\_, Long: \_\_\_\_\_
Datum:  NAD27  NAD83  WGS84
County: \_\_\_\_\_ Elevation: \_\_\_\_\_  GL  KB
Lease Name: \_\_\_\_\_ Well #: \_\_\_\_\_
Well Type: (check one)  Oil  Gas  OG  WSW  Other: \_\_\_\_\_
 SWD Permit #: \_\_\_\_\_  ENHR Permit #: \_\_\_\_\_
 Gas Storage Permit #: \_\_\_\_\_
Spud Date: \_\_\_\_\_ Date Shut-In: \_\_\_\_\_

Table with 7 columns: Conductor, Surface, Production, Intermediate, Liner, Tubing. Rows include Size, Setting Depth, Amount of Cement, Top of Cement, Bottom of Cement.

Casing Fluid Level from Surface: \_\_\_\_\_ How Determined? \_\_\_\_\_ Date: \_\_\_\_\_
Casing Squeeze(s): \_\_\_\_\_ to \_\_\_\_\_ w / \_\_\_\_\_ sacks of cement, \_\_\_\_\_ to \_\_\_\_\_ w / \_\_\_\_\_ sacks of cement. Date: \_\_\_\_\_
Do you have a valid Oil & Gas Lease?  Yes  No
Depth and Type:  Junk in Hole at \_\_\_\_\_ (depth)  Tools in Hole at \_\_\_\_\_ (depth) Casing Leaks:  Yes  No Depth of casing leak(s): \_\_\_\_\_
Type Completion:  ALT. I  ALT. II Depth of:  DV Tool: \_\_\_\_\_ w / \_\_\_\_\_ sacks of cement  Port Collar: \_\_\_\_\_ w / \_\_\_\_\_ sack of cement
Packer Type: \_\_\_\_\_ Size: \_\_\_\_\_ Inch Set at: \_\_\_\_\_ Feet
Total Depth: \_\_\_\_\_ Plug Back Depth: \_\_\_\_\_ Plug Back Method: \_\_\_\_\_

Geological Date:

Table with 4 columns: Formation Name, Formation Top, Formation Base, Completion Information. Rows 1 and 2.

UNDER PENALTY OF PERJURY I HEREBY ATTEST THAT THE INFORMATION CONTAINED HEREIN IS TRUE AND CORRECT TO THE BEST OF MY KNOWLEDGE

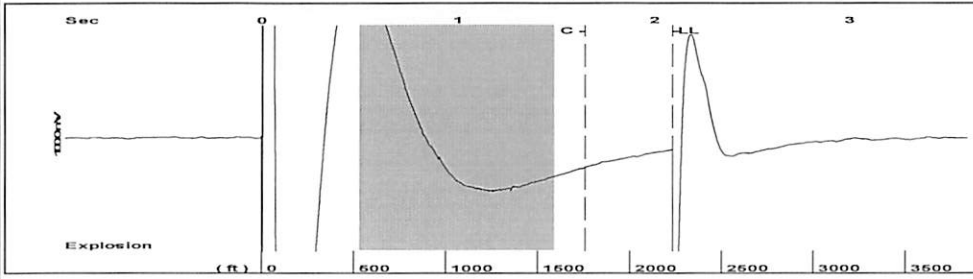
Submitted Electronically

Do NOT Write in This Space - KCC USE ONLY
Date Tested: \_\_\_\_\_ Results: \_\_\_\_\_ Date Plugged: \_\_\_\_\_ Date Repaired: \_\_\_\_\_ Date Put Back in Service: \_\_\_\_\_
Review Completed by: \_\_\_\_\_ Comments: \_\_\_\_\_
TA Approved:  Yes  Denied Date: \_\_\_\_\_

Mail to the Appropriate KCC Conservation Office:

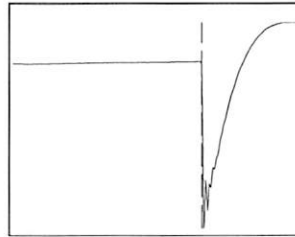
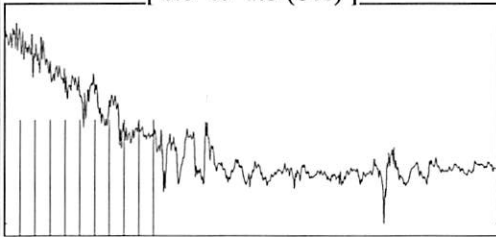
Table with 3 columns: District Office, Address, Phone. Rows for District Office #1, #2, #3, #4.

Group: Northern Kansas District Well: BEMIS A-17 (acquired on: 01/21/22 07:57:18 )



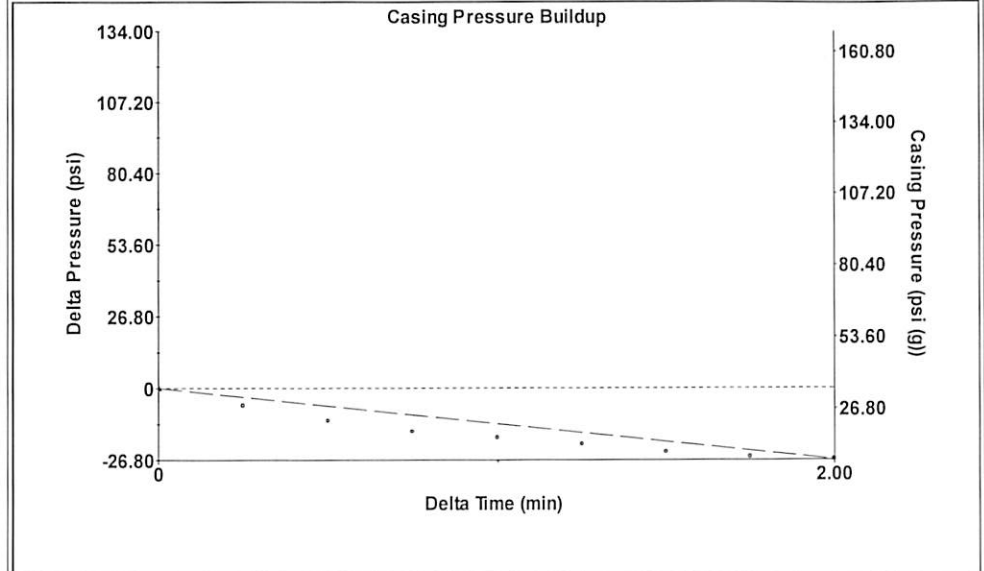
Filter Type High Pass Automatic Collar Count Yes Time 2.094 sec  
 Manual Acoustic Velo 2092.67 ft/s Manual JTS/sec 33.3333 Joints 71.1553 Jts  
 Depth 2233.57 ft

[ 0.5 to 1.5 (Sec) ]



Analysis Method: Automatic

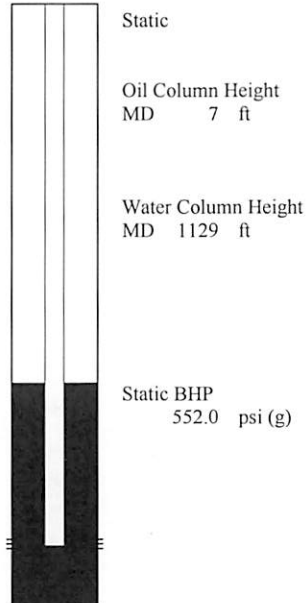
Group: Northern Kansas District Well: BEMIS A-17 (acquired on: 01/21/22 07:57:18 )



Change in Pressure -26.66 psi PT 8139  
 Change in Time 2.00 min Range 0 - ? psi

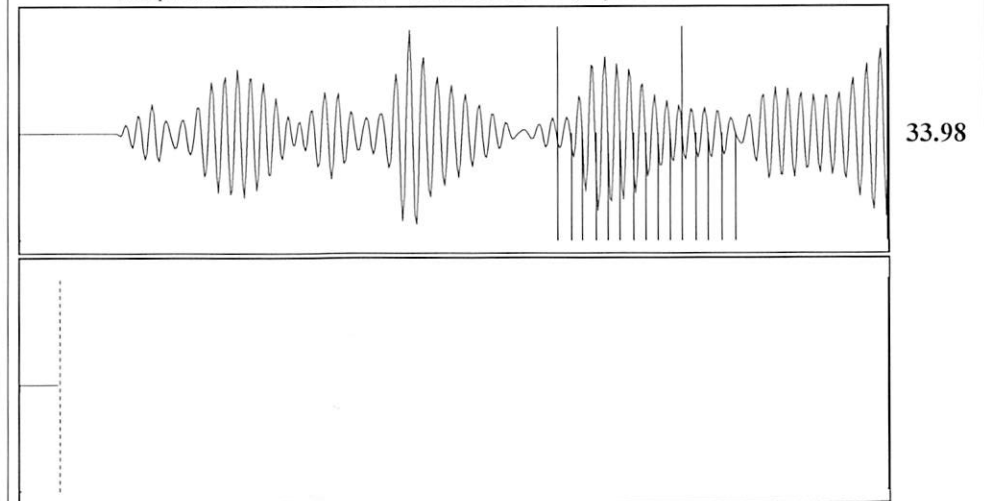
Group: Northern Kansas District Well: BEMIS A-17 (acquired on: 01/21/22 07:57:18 )

Production Current Potential Casing Pressure 34.5 psi (g)  
 Oil 6.5 - \*- BBL/D Casing Pressure Buildup 2.00 min  
 Wat 130.34 - \*- BBL/D Gas/Liquid Interface Pressure 36.6 psi (g)  
 Gas - \*- - \*- Mscf/D  
 IPR Method Vogel  
 PBHP/SBHP - \*-  
 Production Efficiency 0.0  
 Liquid Level Depth 2233.57 ft  
 Oil 40 deg.API  
 Water 1.05 Sp.Gr.H2O  
 Gas 0.55 Sp.Gr.AIR  
 Pump Intake Depth 3390.00 ft  
 Acoustic Velocity 2133.3 ft/s Formation Depth 3374.00 ft



Static Fluid

Group: Northern Kansas District Well: BEMIS A-17 (acquired on: 01/21/22 07:57:18 )



Acoustic Velocity 2133.3 ft/s Joints counted 14  
 Joints Per Second 33.9806 jts/sec Joints to liquid level 71.1553  
 Depth to liquid level 2233.57 ft Filter Width 31.3333 35.3333  
 Automatic Collar Count Yes Time to 1st Collar 1.236 1.648

Conservation Division  
District Office No. 4  
2301 E. 13th Street  
Hays, KS 67601-2651



Phone: 785-261-6250  
Fax: 785-625-0564  
<http://kcc.ks.gov/>

Dwight D. Keen, Chair  
Susan K. Duffy, Commissioner  
Andrew J. French, Commissioner

Laura Kelly, Governor

January 21, 2022

Jerry Wirtz  
E & B Natural Resources Management Corp.  
2501 280TH AVE  
HAYS, KS 67601-9598

Re: Temporary Abandonment  
API 15-051-24762-00-00  
FA BEMIS A 17  
NE/4 Sec.28-11S-17W  
Ellis County, Kansas

Dear Jerry Wirtz:

"Your temporary abandonment (TA) application for the well listed above has been approved. In accordance with K.A.R. 82-3-111 the TA status of this well will expire 01/21/2023.

- \* If you return this well to service or plug it, please notify the District Office.
- \* If you sell this well you are required to file a Transfer of Operator form, T-1.
- \* If the well will remain temporarily abandoned, you must submit a new TA application, CP-111, before 01/21/2023.

You may contact me at the number above if you have questions.

Very truly yours,

RICHARD WILLIAMS"