

KANSAS CORPORATION COMMISSION
OIL & GAS CONSERVATION DIVISION

TEMPORARY ABANDONMENT WELL APPLICATION

OPERATOR: License#
Name:
Address 1:
Address 2:
City: State: Zip:
Contact Person:
Phone:
Contact Person Email:
Field Contact Person:
Field Contact Person Phone:

API No. 15-
Spot Description:
Sec. Twp. S. R.
GPS Location: Lat: Long:
Datum:
County: Elevation:
Lease Name: Well #:
Well Type:
SWD Permit #: ENHR Permit #:
Gas Storage Permit #:
Spud Date: Date Shut-In:

Table with 7 columns: Conductor, Surface, Production, Intermediate, Liner, Tubing. Rows include Size, Setting Depth, Amount of Cement, Top of Cement, Bottom of Cement.

Casing Fluid Level from Surface: How Determined? Date:
Casing Squeeze(s): to w / sacks of cement, to w / sacks of cement. Date:
Do you have a valid Oil & Gas Lease?
Depth and Type: Junk in Hole at Tools in Hole at Casing Leaks:
Type Completion: ALT. I ALT. II Depth of: DV Tool: Port Collar:
Packer Type: Size: Inch Set at: Feet
Total Depth: Plug Back Depth: Plug Back Method:

Geological Data:

Table with 4 columns: Formation Name, Formation Top, Formation Base, Completion Information. Rows 1 and 2.

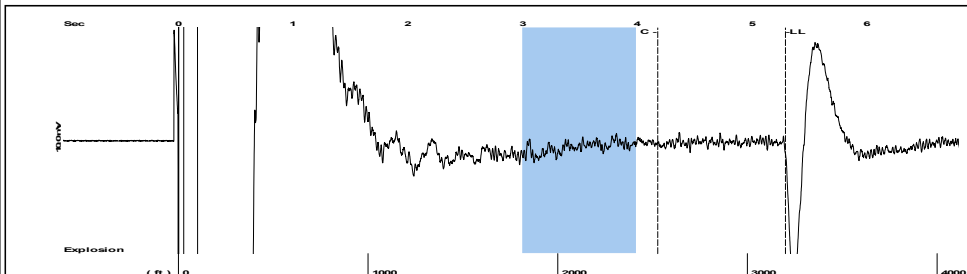
UNDER PENALTY OF PERJURY I HEREBY ATTEST THAT THE INFORMATION CONTAINED HEREIN IS TRUE AND CORRECT TO THE BEST OF MY KNOWLEDGE

Submitted Electronically

Form with fields: Do NOT Write in This Space - KCC USE ONLY, Date Tested, Results, Date Plugged, Date Repaired, Date Put Back in Service, Review Completed by, Comments, TA Approved, Date.

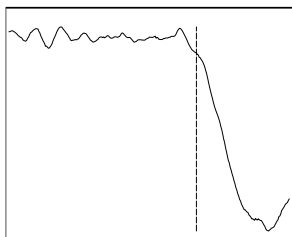
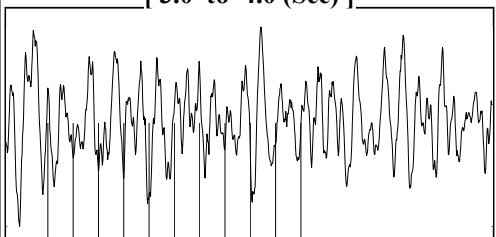
Mail to the Appropriate KCC Conservation Office:

Table with 2 columns: Office Address, Phone Number. Rows for District Offices #1, #2, #3, and #4.

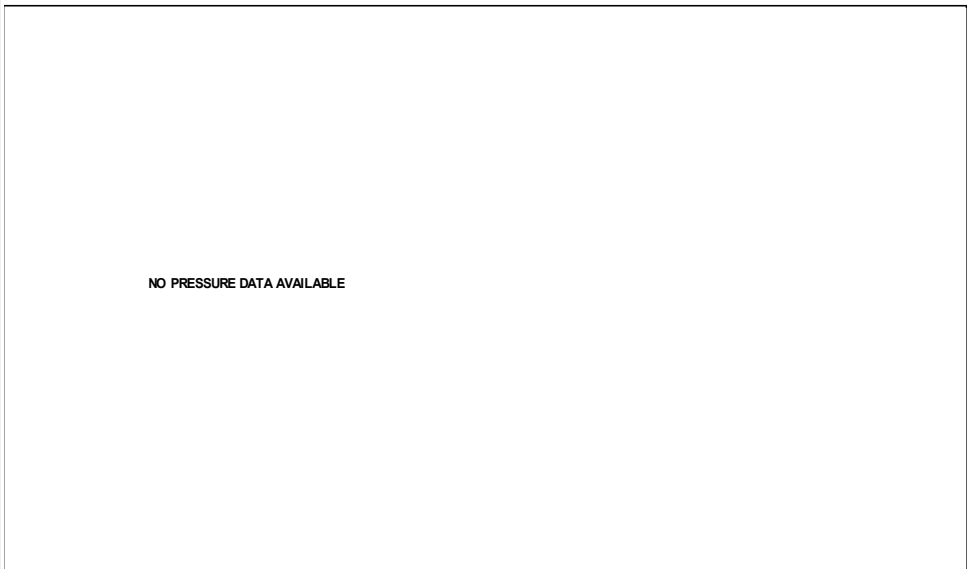


Filter Type High Pass Automatic Collar Count Yes Time 5.289 sec
 Manual Acoustic Veloc 1219.23 ft/s Manual JTS/sec 19.2308 Joints 100.957 Jts
 Depth 3200.32 ft

[3.0 to 4.0 (Sec)]

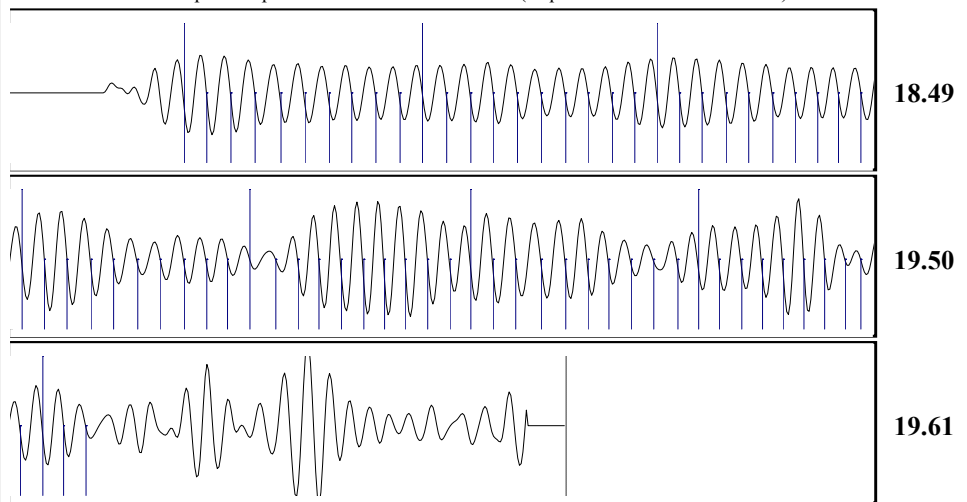


Analysis Method: Automatic



Change in Pressure 0.00 psi PT18514
 Range 0 - ? psi
 Change in Time 0.00 min

Production		Potential		Casing Pressure		Static	
Oil	- * -	- * -	BBL/D	-1.3	psi (g)	Oil Column Height	18.49
Water	- * -	- * -	BBL/D	- * -	psi	MD	0 ft
Gas	- * -	- * -	Mscf/D	- * -	min	Water Column Height	19.50
				- * -	psi (g)	MD	- * - ft
IPR Method		Vogel		Gas/Liquid Interface Pressure		Static BHP	
PBHP/SBHP	- * -	- * -		- * -	psi (g)	- * -	psi (g)
Production Efficiency	0.0						
Oil	40 deg.API	Liquid Level Depth		3200.32 ft			
Water	1.05 Sp.Gr.H2O	Pump Intake Depth		- * - ft			
Gas	0.78 Sp.Gr.AIR	Formation Depth		4823.00 ft			
Acoustic Velocity	1210.18 ft/s						
Acoustic Test							



Acoustic Velocity 1210.18 ft/s Joints counted 72
 Joints Per Second 19.088 jts/sec Joints to liquid level 100.957
 Depth to liquid level 3200.32 ft Filter Width 17.2308 21.2308
 Automatic Collar Count Yes Time to 1st Collar 0.404 4.176

Conservation Division
District Office No. 1
210 E. Frontview, Suite A
Dodge City, KS 67801



Phone: 620-682-7933
<http://kcc.ks.gov/>

Dwight D. Keen, Chair
Susan K. Duffy, Commissioner
Andrew J. French, Commissioner

Laura Kelly, Governor

January 21, 2022

Jose Reyes
American Warrior, Inc.
PO BOX 399
GARDEN CITY, KS 67846-0399

Re: Temporary Abandonment
API 15-007-22700-00-00
BEAR CREEK 1
SW/4 Sec.12-31S-15W
Barber County, Kansas

Dear Jose Reyes:

"Your temporary abandonment (TA) application for the well listed above has been approved. In accordance with K.A.R. 82-3-111 the TA status of this well will expire 01/21/2023.

- * If you return this well to service or plug it, please notify the District Office.
- * If you sell this well you are required to file a Transfer of Operator form, T-1.
- * If the well will remain temporarily abandoned, you must submit a new TA application, CP-111, before 01/21/2023.

You may contact me at the number above if you have questions.

Very truly yours,

Michael Maier"