

KANSAS CORPORATION COMMISSION
OIL & GAS CONSERVATION DIVISION

TEMPORARY ABANDONMENT WELL APPLICATION

OPERATOR: License# _____
 Name: _____
 Address 1: _____
 Address 2: _____
 City: _____ State: _____ Zip: _____ + _____
 Contact Person: _____
 Phone: (_____) _____
 Contact Person Email: _____
 Field Contact Person: _____
 Field Contact Person Phone: (_____) _____

API No. 15- _____
 Spot Description: _____
 _____ - _____ - _____ - _____ Sec. _____ Twp. _____ S. R. _____ E W
 _____ feet from N / S Line of Section
 _____ feet from E / W Line of Section
 GPS Location: Lat: _____, Long: _____
(e.g. xx.xxxxx) (e.g. -xxx.xxxxx)
 Datum: NAD27 NAD83 WGS84
 County: _____ Elevation: _____ GL KB
 Lease Name: _____ Well #: _____
 Well Type: (check one) Oil Gas OG WSW Other: _____
 SWD Permit #: _____ ENHR Permit #: _____
 Gas Storage Permit #: _____
 Spud Date: _____ Date Shut-In: _____

	Conductor	Surface	Production	Intermediate	Liner	Tubing
Size						
Setting Depth						
Amount of Cement						
Top of Cement						
Bottom of Cement						

Casing Fluid Level from Surface: _____ How Determined? _____ Date: _____
 Casing Squeeze(s): _____ to _____ w / _____ sacks of cement, _____ to _____ w / _____ sacks of cement. Date: _____
(top) (bottom) (top) (bottom)
 Do you have a valid Oil & Gas Lease? Yes No
 Depth and Type: Junk in Hole at _____ Tools in Hole at _____ Casing Leaks: Yes No Depth of casing leak(s): _____
(depth) (depth)
 Type Completion: ALT. I ALT. II Depth of: DV Tool: _____ w / _____ sacks of cement Port Collar: _____ w / _____ sack of cement
(depth) (depth)
 Packer Type: _____ Size: _____ Inch Set at: _____ Feet
 Total Depth: _____ Plug Back Depth: _____ Plug Back Method: _____

Geological Data:

Formation Name	Formation Top	Formation Base	Completion Information
1. _____	At: _____	to _____ Feet	Perforation Interval _____ to _____ Feet or Open Hole Interval _____ to _____ Feet
2. _____	At: _____	to _____ Feet	Perforation Interval _____ to _____ Feet or Open Hole Interval _____ to _____ Feet

UNDER PENALTY OF PERJURY I HEREBY ATTEST THAT THE INFORMATION CONTAINED HEREIN IS TRUE AND CORRECT TO THE BEST OF MY KNOWLEDGE

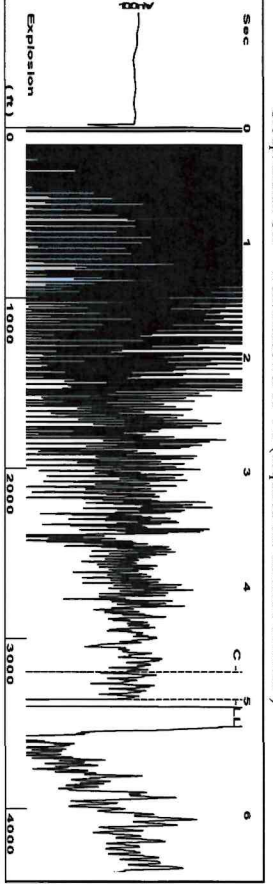
Submitted Electronically

Do NOT Write in This Space - KCC USE ONLY	Date Tested: _____	Results: _____	Date Plugged: _____	Date Repaired: _____	Date Put Back in Service: _____
	Review Completed by: _____ Comments: _____				
TA Approved: <input type="checkbox"/> Yes <input type="checkbox"/> Denied Date: _____					

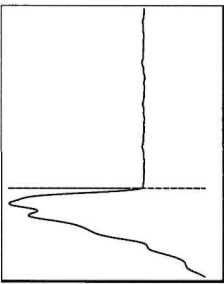
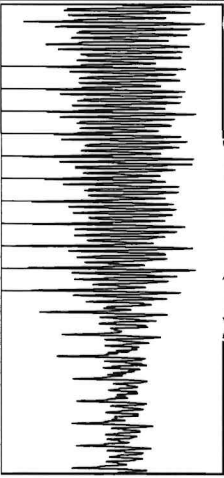
Mail to the Appropriate KCC Conservation Office:

	KCC District Office #1 - 210 E. Frontview, Suite A, Dodge City, KS 67801	Phone 620.682.7933
	KCC District Office #2 - 3450 N. Rock Road, Building 600, Suite 601, Wichita, KS 67226	Phone 316.337.7400
	KCC District Office #3 - 137 E. 21st St., Chanute, KS 66720	Phone 620.902.6450
	KCC District Office #4 - 2301 E. 13th Street, Hays, KS 67601-2651	Phone 785.261.6250

Group: Indian Oil Well: Halbower A 1-3 (acquired on: 12/09/21 10:03:25)



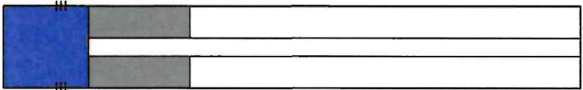
Filter Type High Pass Automatic Collar Count Yes
 Manual Acoustic Veloc 320 83 ft/s Manual JTS/sec 20 8333
 Time 4.989 sec
 Joints 105.888 Jts
 Depth 3356.65 ft



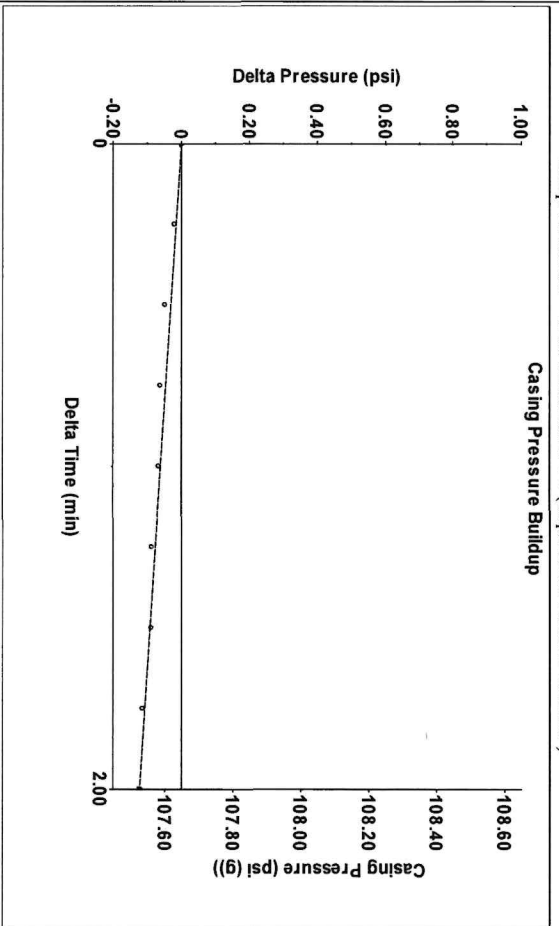
Analysis Method: Automatic

Group: Indian Oil Well: Halbower A 1-3 (acquired on: 12/09/21 10:03:25)

Production	Potential	Casing Pressure	Producing
Current	-*- BBL/D	107.6 psi (g)	Pump Intake
Oil	-*- BBL/D	Casing Pressure Buildup	454.6 psi (g)
Water	-*- Mscf/D	-0.122 psi	Producing BHP
Gas	-*-	2.00 min	579.6 psi (g)
IPR Method	Vogel	Gas/Liquid Interface Pressure	Static BHP
PBHP/SBHP	-*-	117.1 psi (g)	-*- psi (g)
Production Efficiency	0.0	Liquid Level Depth	
		3356.65 ft	
40 deg API		Pump Intake Depth	
ier 1.05 Sp.Gr.H2O		4369.00 ft	
Gas 0.65 Sp.Gr.AIR		Formation Depth	
		4644.00 ft	
Acoustic Velocity	1345.62 ft/s		
Formation Submergence			
Total Gaseous Liquid Column HT (TVD)	1012 ft		
Equivalent Gas Free Liquid HT (TVD)	1012 ft		
12-09-21			

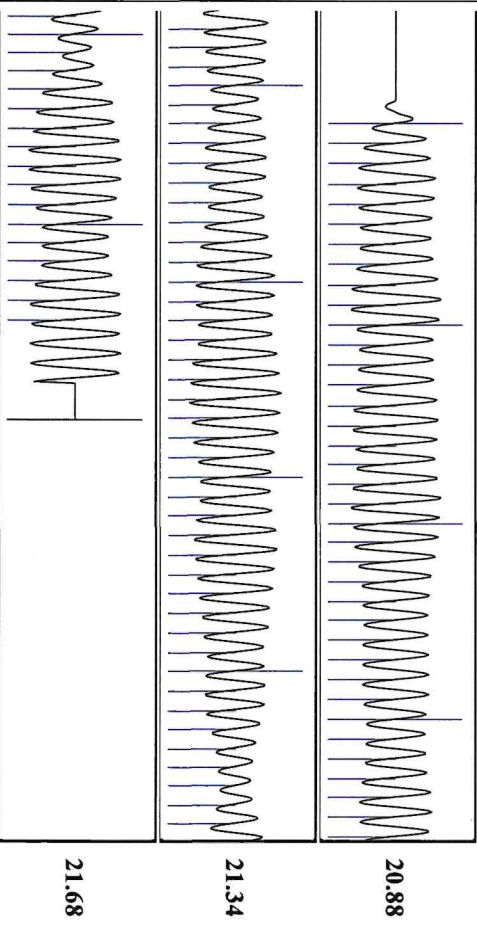


Group: Indian Oil Well: Halbower A 1-3 (acquired on: 12/09/21 10:03:25)



Change in Pressure -0.12 psi PT 15565
 Change in Time 2.00 min Range 0 - ? psi

Group: Indian Oil Well: Halbower A 1-3 (acquired on: 12/09/21 10:03:25)



Acoustic Velocity 1345.62 ft/s Joints counted 95
 Joints Per Second 21.2243 Jts/sec Joints to liquid level 105.888
 Depth to liquid level 3356.65 ft Filter Width 18.8333
 Automatic Collar Count Yes Time to 1st Collar 0.272 4.748

PSN

Conservation Division
District Office No. 2
3450 N. Rock Road
Building 600, Suite 601
Wichita, KS 67226



Phone: 316-337-7400
Fax: 316-630-4005
<http://kcc.ks.gov/>

Dwight D. Keen, Chair
Susan K. Duffy, Commissioner
Andrew J. French, Commissioner

Laura Kelly, Governor

January 27, 2022

Joscelyn Nittler
Indian Oil Co., Inc.
PO BOX 209
MEDICINE LODGE, KS 67104-0209

Re: Temporary Abandonment
API 15-077-20133-00-00
HALBOWER A 1-3
NW/4 Sec.03-34S-08W
Harper County, Kansas

Dear Joscelyn Nittler:

"Your temporary abandonment (TA) application for the well listed above has been approved. In accordance with K.A.R. 82-3-111 the TA status of this well will expire 01/27/2023.

- * If you return this well to service or plug it, please notify the District Office.
- * If you sell this well you are required to file a Transfer of Operator form, T-1.
- * If the well will remain temporarily abandoned, you must submit a new TA application, CP-111, before 01/27/2023.

You may contact me at the number above if you have questions.

Very truly yours,

Scott Schmidt, ECRS"