

KANSAS CORPORATION COMMISSION
OIL & GAS CONSERVATION DIVISION

TEMPORARY ABANDONMENT WELL APPLICATION

OPERATOR: License# \_\_\_\_\_
Name: \_\_\_\_\_
Address 1: \_\_\_\_\_
Address 2: \_\_\_\_\_
City: \_\_\_\_\_ State: \_\_\_\_\_ Zip: \_\_\_\_\_ + \_\_\_\_\_
Contact Person: \_\_\_\_\_
Phone:( \_\_\_\_\_ ) \_\_\_\_\_
Contact Person Email: \_\_\_\_\_
Field Contact Person: \_\_\_\_\_
Field Contact Person Phone: ( \_\_\_\_\_ ) \_\_\_\_\_

API No. 15- \_\_\_\_\_
Spot Description: \_\_\_\_\_
- - - - - Sec. \_\_\_\_\_ Twp. \_\_\_\_\_ S. R. \_\_\_\_\_  E  W
\_\_\_\_\_ feet from  N /  S Line of Section
\_\_\_\_\_ feet from  E /  W Line of Section
GPS Location: Lat: \_\_\_\_\_, Long: \_\_\_\_\_
Datum:  NAD27  NAD83  WGS84
County: \_\_\_\_\_ Elevation: \_\_\_\_\_  GL  KB
Lease Name: \_\_\_\_\_ Well #: \_\_\_\_\_
Well Type: (check one)  Oil  Gas  OG  WSW  Other: \_\_\_\_\_
 SWD Permit #: \_\_\_\_\_  ENHR Permit #: \_\_\_\_\_
 Gas Storage Permit #: \_\_\_\_\_
Spud Date: \_\_\_\_\_ Date Shut-In: \_\_\_\_\_

Table with 7 columns: Conductor, Surface, Production, Intermediate, Liner, Tubing. Rows include Size, Setting Depth, Amount of Cement, Top of Cement, Bottom of Cement.

Casing Fluid Level from Surface: \_\_\_\_\_ How Determined? \_\_\_\_\_ Date: \_\_\_\_\_
Casing Squeeze(s): \_\_\_\_\_ to \_\_\_\_\_ w / \_\_\_\_\_ sacks of cement, \_\_\_\_\_ to \_\_\_\_\_ w / \_\_\_\_\_ sacks of cement. Date: \_\_\_\_\_
Do you have a valid Oil & Gas Lease?  Yes  No
Depth and Type:  Junk in Hole at \_\_\_\_\_  Tools in Hole at \_\_\_\_\_ Casing Leaks:  Yes  No Depth of casing leak(s): \_\_\_\_\_
Type Completion:  ALT. I  ALT. II Depth of:  DV Tool: \_\_\_\_\_ w / \_\_\_\_\_ sacks of cement  Port Collar: \_\_\_\_\_ w / \_\_\_\_\_ sack of cement
Packer Type: \_\_\_\_\_ Size: \_\_\_\_\_ Inch Set at: \_\_\_\_\_ Feet
Total Depth: \_\_\_\_\_ Plug Back Depth: \_\_\_\_\_ Plug Back Method: \_\_\_\_\_

Geological Date:

Table with 4 columns: Formation Name, Formation Top, Formation Base, Completion Information. Rows 1 and 2.

UNDER PENALTY OF PERJURY I HEREBY ATTEST THAT THE INFORMATION CONTAINED HEREIN IS TRUE AND CORRECT TO THE BEST OF MY KNOWLEDGE

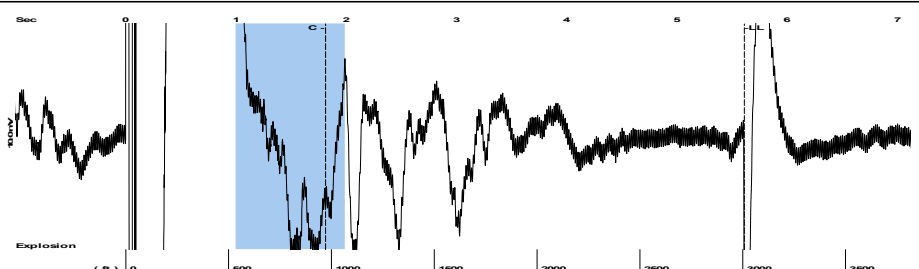
Submitted Electronically

Do NOT Write in This Space - KCC USE ONLY
Date Tested: \_\_\_\_\_ Results: \_\_\_\_\_ Date Plugged: \_\_\_\_\_ Date Repaired: \_\_\_\_\_ Date Put Back in Service: \_\_\_\_\_
Review Completed by: \_\_\_\_\_ Comments: \_\_\_\_\_
TA Approved:  Yes  Denied Date: \_\_\_\_\_

Mail to the Appropriate KCC Conservation Office:

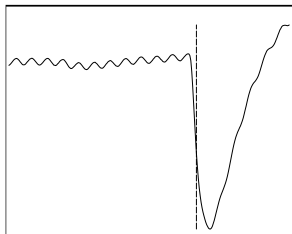
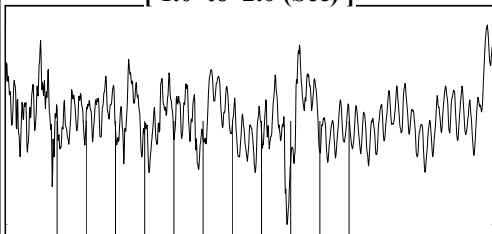
Table with 3 columns: District Office, Address, Phone. Rows for District Office #1, #2, #3, #4.

Group: MyWells Well: JOYCE # 14-1 (acquired on: 01/18/22 09:55:29)



Filter Type High Pass Automatic Collar Count Yes Time 5.611 sec  
 Manual Acoustic Veloc 1056.67 ft/s Manual JTS/sec 16.6667 Joints 94.872 Jts  
 Depth 3007.44 ft

[ 1.0 to 2.0 (Sec) ]



**Analysis Method: Automatic**

Group: MyWells Well: JOYCE # 14-1 (acquired on: 01/18/22 09:55:29)

NO PRESSURE DATA AVAILABLE

Change in Pressure 0.00 psi NONE  
 Range 0 - ? psi  
 Change in Time 0.00 min

Group: MyWells Well: JOYCE # 14-1 (acquired on: 01/18/22 09:55:29)

**Production**  
 Current Potential  
 Oil - \* - BBL/D  
 Water - \* - BBL/D  
 Gas - \* - Mscf/D

IPR Method Vogel  
 PBHP/SBHP - \* -  
 Production Efficiency 0.0

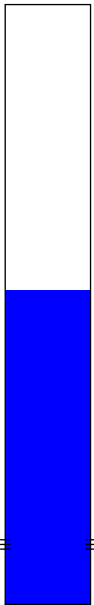
Oil 40 deg.API  
 Water 1.05 Sp.Gr.H2O  
 Gas 0.90 Sp.Gr.AIR

Acoustic Velocity 1071.98 ft/s

Formation Submergence  
 Total Gaseous Liquid Column HT (TVD) - \* - ft  
 Equivalent Gas Free Liquid HT (TVD) - \* - ft

Acoustic Test

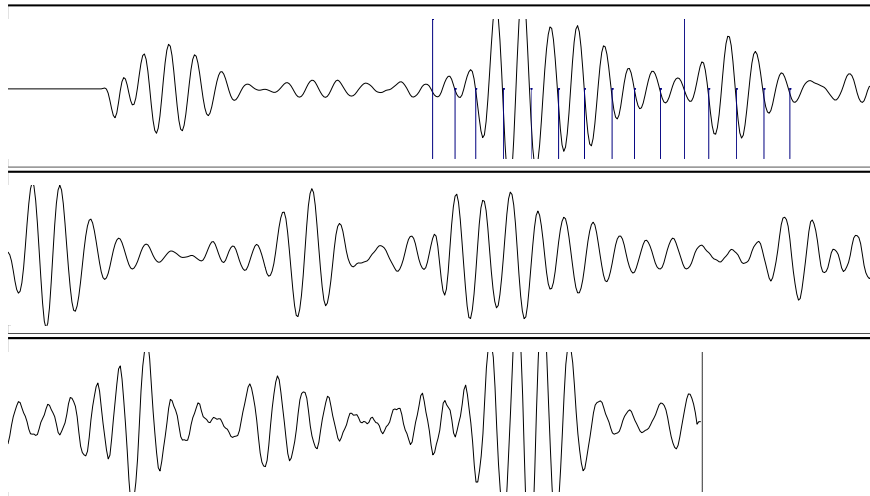
Casing Pressure 0.0 psi (g)  
 Casing Pressure Buildup - \* - psi  
 Gas/Liquid Interface Pressure - \* - psi (g)  
 Liquid Level Depth 3007.44 ft  
 Pump Intake Depth - \* - ft  
 Formation Depth 6400.00 ft



**Producing**  
 Annular Gas Flow - \* - Mscf/D  
 % Liquid 100 %

Pump Intake - \* - psi (g)  
 Producing BHP - \* - psi (g)  
 Static BHP - \* - psi (g)

Group: MyWells Well: JOYCE # 14-1 (acquired on: 01/18/22 09:55:29)



16.91

Acoustic Velocity 1071.98 ft/s Joints counted 14  
 Joints Per Second 16.9082 jts/sec Joints to liquid level 94.872  
 Depth to liquid level 3007.44 ft Filter Width 14.6667 18.6667  
 Automatic Collar Count Yes Time to 1st Collar 0.984 1.812

Conservation Division  
District Office No. 1  
210 E. Frontview, Suite A  
Dodge City, KS 67801



Phone: 620-682-7933  
<http://kcc.ks.gov/>

Dwight D. Keen, Chair  
Susan K. Duffy, Commissioner  
Andrew J. French, Commissioner

Laura Kelly, Governor

January 27, 2022

Jose Reyes  
Palmer Oil, Inc.  
3118 N. CUMMINGS RD.  
PO BOX 399  
GARDEN CITY, KS 67846-0399

Re: Temporary Abandonment  
API 15-189-22571-00-00  
JOYCE 14 1  
NW/4 Sec.14-31S-36W  
Stevens County, Kansas

Dear Jose Reyes:

"Your temporary abandonment (TA) application for the well listed above has been approved. In accordance with K.A.R. 82-3-111 the TA status of this well will expire 01/27/2023.

- \* If you return this well to service or plug it, please notify the District Office.
- \* If you sell this well you are required to file a Transfer of Operator form, T-1.
- \* If the well will remain temporarily abandoned, you must submit a new TA application, CP-111, before 01/27/2023.

You may contact me at the number above if you have questions.

Very truly yours,

Michael Maier"