



## DRILL STEM TEST REPORT

Prepared For: **F G Holl Company LLC**

9431 East Central Suite 100  
Wichita, Kansas 67206-2563

ATTN: Renee Husted

**Leroy Farm #2-30**

**30-19s-14w Barton**

Start Date: 2019.11.10 @ 17:54:00

End Date: 2019.11.10 @ 22:18:00

Job Ticket #: 01391                      DST #: 4

Eagle Testers  
1309 Patton Road    Great Bend, Kansas 67530  
620-791-7394

Printed: 2019.11.10 @ 22:35:30



# DRILL STEM TEST REPORT

F G Holl Company LLC  
 9431 East Central Suite 100  
 Wichita, Kansas 67206-2563  
 ATTN: Renee Husted

**30-19s-14w Barton**  
**Leroy Farm #2-30**  
 Job Ticket: 01391 **DST#: 4**  
 Test Start: 2019.11.10 @ 17:54:00

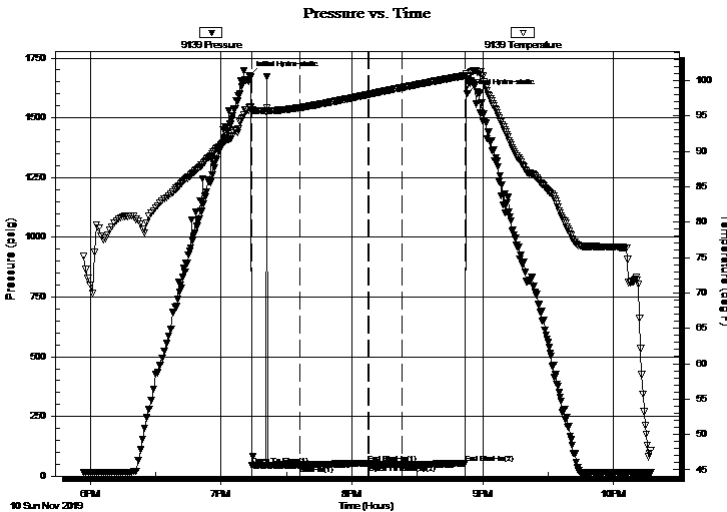
## GENERAL INFORMATION:

Formation: **Kansas City J**  
 Deviated: No Whipstock: ft (KB)  
 Time Tool Opened: 19:24:00  
 Time Test Ended: 22:18:00  
 Interval: **3374.00 ft (KB) To 3400.00 ft (KB) (TVD)**  
 Total Depth: 3400.00 ft (KB) (TVD)  
 Hole Diameter: 7.88 inches Hole Condition: Fair  
 Test Type: Conventional Bottom Hole (Initial)  
 Tester: Gene Budig  
 Unit No:  
 Reference Elevations: 1915.00 ft (KB)  
 1907.00 ft (CF)  
 KB to GR/CF: 8.00 ft

**Serial #: 9139 Outside**  
 Press@RunDepth: 52.70 psig @ 3395.00 ft (KB) Capacity: 5000.00 psig  
 Start Date: 2019.11.10 End Date: 2019.11.10 Last Calib.: 2019.11.10  
 Start Time: 17:54:00 End Time: 22:17:00 Time On Btm: 2019.11.10 @ 19:13:00  
 Time Off Btm: 2019.11.10 @ 20:53:00

**TEST COMMENT:** 1st Opew nig 15 Minutes weak blow for 4 minutes and died  
 1st Shut-In 30 Minutes  
 2nd Opening 15 Minutes no blow  
 2nd Shut-In 30 Minutes

## PRESSURE SUMMARY



Time (Min.)	Pressure (psig)	Temp (deg F)	Annotation
0	1677.87	96.16	Initial Hydro-static
1	44.87	95.84	Open To Flow (1)
23	46.86	96.15	Shut-In(1)
55	53.55	98.01	End Shut-In(1)
55	47.52	98.04	Open To Flow (2)
70	47.69	98.99	Shut-In(2)
99	52.70	100.69	End Shut-In(2)
100	1601.48	100.64	Final Hydro-static

## Recovery

Length (ft)	Description	Volume (bbl)
5.00	Drilling mud	0.07

## Gas Rates

	Choke (inches)	Pressure (psig)	Gas Rate (Mcf/d)



# DRILL STEM TEST REPORT

F G Holl Company LLC  
 9431 East Central Suite 100  
 Wichita, Kansas 67206-2563  
 ATTN: Renee Husted

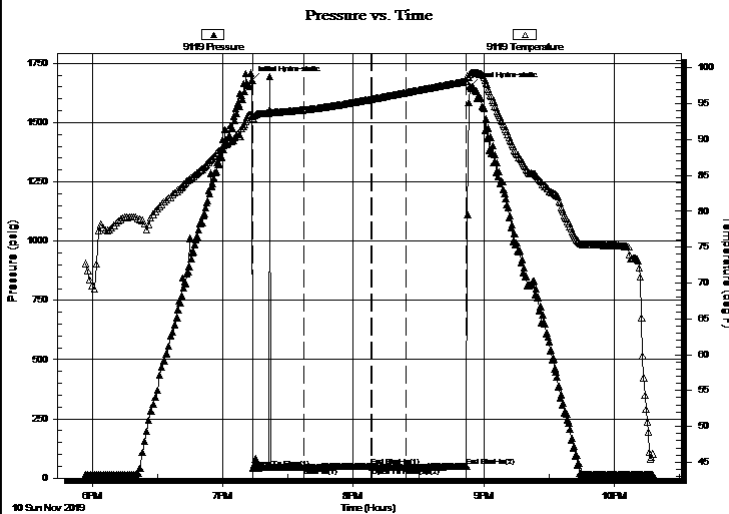
**30-19s-14w Barton**  
**Leroy Farm #2-30**  
 Job Ticket: 01391 **DST#: 4**  
 Test Start: 2019.11.10 @ 17:54:00

## GENERAL INFORMATION:

Formation: **Kansas City J**  
 Deviated: No Whipstock: ft (KB)  
 Time Tool Opened: 19:24:00  
 Time Test Ended: 22:18:00  
 Interval: **3374.00 ft (KB) To 3400.00 ft (KB) (TVD)**  
 Total Depth: 3400.00 ft (KB) (TVD)  
 Hole Diameter: 7.88 inches Hole Condition: Fair  
 Test Type: Conventional Bottom Hole (Initial)  
 Tester: Gene Budig  
 Unit No:  
 Reference Elevations: 1915.00 ft (KB)  
 1907.00 ft (CF)  
 KB to GR/CF: 8.00 ft

**Serial #: 9119 Inside**  
 Press@RunDepth: 49.52 psig @ 3395.00 ft (KB) Capacity: 5000.00 psig  
 Start Date: 2019.11.10 End Date: 2019.11.10 Last Calib.: 2019.11.10  
 Start Time: 17:54:00 End Time: 22:17:30 Time On Btm: 2019.11.10 @ 19:13:30  
 Time Off Btm: 2019.11.10 @ 20:53:30

TEST COMMENT: 1st Opew nig 15 Minutes weak blow for 4 minutes and died  
 1st Shut-In 30 Minutes  
 2nd Opening 15 Minutes no blow  
 2nd Shut-In 30 Minutes



## PRESSURE SUMMARY

Time (Min.)	Pressure (psig)	Temp (deg F)	Annotation
0	1678.08	93.28	Initial Hydro-static
1	43.10	92.93	Open To Flow (1)
24	45.23	94.14	Shut-In(1)
55	51.28	95.63	End Shut-In(1)
55	45.13	95.66	Open To Flow (2)
71	44.81	96.56	Shut-In(2)
99	49.52	98.16	End Shut-In(2)
100	1651.22	99.16	Final Hydro-static

## Recovery

Length (ft)	Description	Volume (bbl)
5.00	Drilling mud	0.07

## Gas Rates

	Choke (inches)	Pressure (psig)	Gas Rate (Mcf/d)



# DRILL STEM TEST REPORT

**TOOL DIAGRAM**

F G Holl Company LLC

**30-19s-14w Barton**

9431 East Central Suite 100  
Wichita, Kansas 67206-2563

**Leroy Farm #2-30**

ATTN: Renee Husted

Job Ticket: 01391

**DST#: 4**

Test Start: 2019.11.10 @ 17:54:00

## Tool Information

Drill Pipe:	Length: 3375.00 ft	Diameter: 3.80 inches	Volume: 47.34 bbl	Tool Weight: 2000.00 lb
Heavy Wt. Pipe:	Length: 0.00 ft	Diameter: 0.00 inches	Volume: 0.00 bbl	Weight set on Packer: 20000.00 lb
Drill Collar:	Length: 0.00 ft	Diameter: 0.00 inches	Volume: 0.00 bbl	Weight to Pull Loose: 58000.00 lb
			<u>Total Volume: 47.34 bbl</u>	Tool Chased 0.00 ft
Drill Pipe Above KB:	31.00 ft			String Weight: Initial 44000.00 lb
Depth to Top Packer:	3374.00 ft			Final 44000.00 lb
Depth to Bottom Packer:	ft			
Interval between Packers:	26.00 ft			
Tool Length:	56.00 ft			
Number of Packers:	2	Diameter: 6.75 inches		

Tool Comments:

Tool Description	Length (ft)	Serial No.	Position	Depth (ft)	Accum. Lengths
------------------	-------------	------------	----------	------------	----------------

Shut In Tool	5.00			3349.00	
Hydraulic tool	5.00			3354.00	
Jars	5.00			3359.00	
Safety Joint	5.00			3364.00	
Packer	5.00			3369.00	30.00 Bottom Of Top Packer
Packer	5.00		Fluid	3374.00	
Anchor	21.00			3395.00	
Recorder	0.00	9119	Inside	3395.00	
Recorder	0.00	9139	Outside	3395.00	
Bullnose	5.00			3400.00	26.00 Bottom Packers & Anchor
<b>Total Tool Length:</b>	<b>56.00</b>				



# DRILL STEM TEST REPORT

## FLUID SUMMARY

F G Holl Company LLC

**30-19s-14w Barton**

9431 East Central Suite 100  
Wichita, Kansas 67206-2563

**Leroy Farm #2-30**

Job Ticket: 01391

**DST#: 4**

ATTN: Renee Husted

Test Start: 2019.11.10 @ 17:54:00

### Mud and Cushion Information

Mud Type: Gel Chem  
Mud Weight: 9.00 lb/gal  
Viscosity: 51.00 sec/qt  
Water Loss: 8.00 in<sup>3</sup>  
Resistivity: ohm.m  
Salinity: 8100.00 ppm  
Filter Cake: 1.00 inches

Cushion Type:  
Cushion Length: ft  
Cushion Volume: bbl  
Gas Cushion Type:  
Gas Cushion Pressure: psig

Oil API: deg API  
Water Salinity: ppm

### Recovery Information

Recovery Table

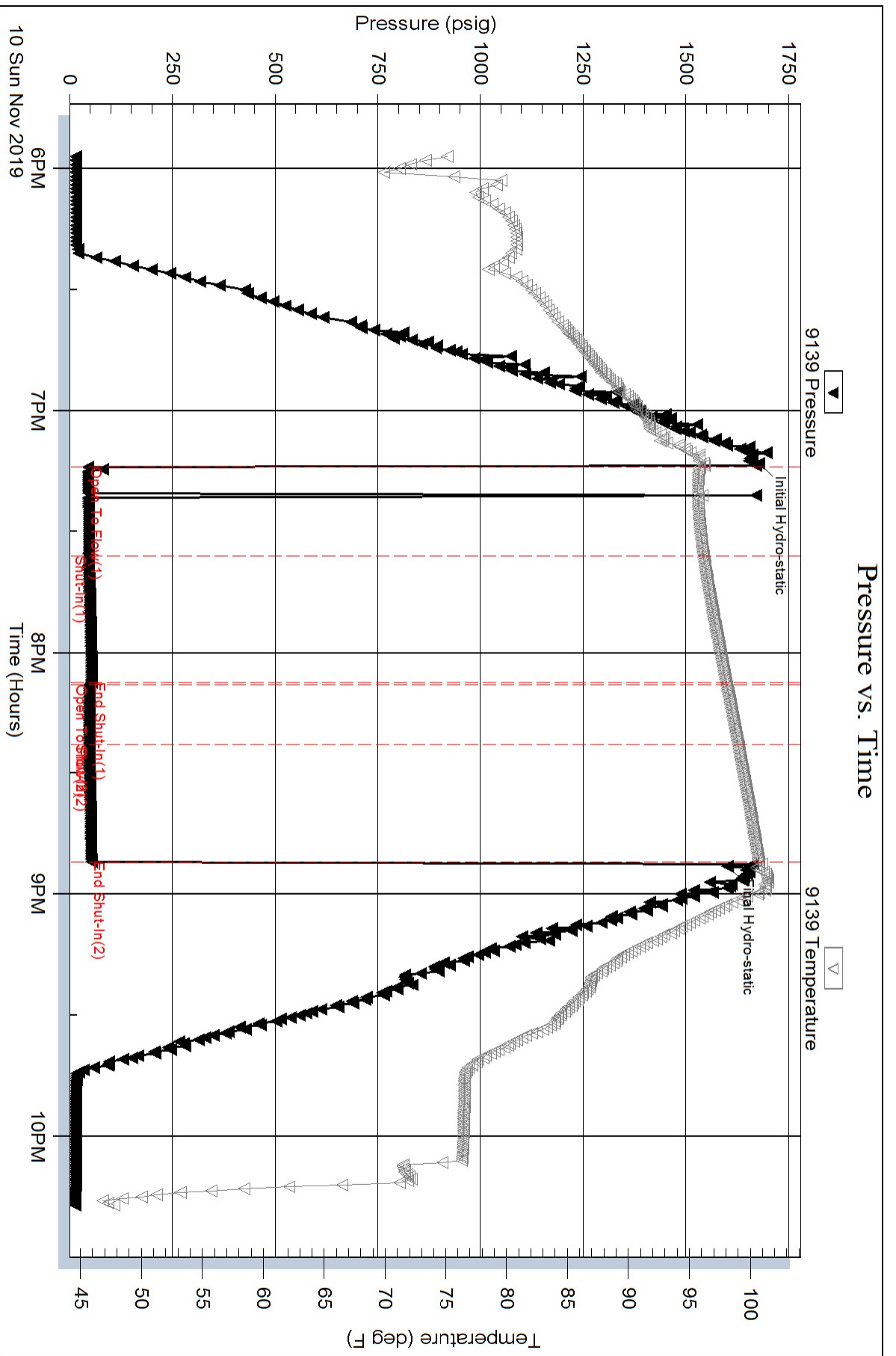
Length ft	Description	Volume bbl
5.00	Drilling mud	0.070

Total Length: 5.00 ft      Total Volume: 0.070 bbl

Num Fluid Samples: 0      Num Gas Bombs: 0      Serial #:

Laboratory Name:      Laboratory Location:

Recovery Comments:



### Pressure vs. Time

