

# WELLSITE GEOLOGIST'S REPORT

RENE HUSTEAD  
CONSULTANT GEOLOGIST



Scale 1:240 (5"=100') Imperial  
Measured Depth Log

Well Name: LEROY FARMING TRUST NO. 2-30  
Well Id:  
Location: SEC 30-19S-14W  
License Number: 15-009-26-279-0000  
Spud Date: NOV 4-2019  
Surface Coordinates: 1400' FWL, 945' FNL, 80' E,45' N. OF S/2 N/2 NW  
Region: Barton Co  
Drilling Completed: NOV. -13 -2019  
Bottom Hole VERTICAL  
Coordinates:  
Ground Elevation (ft): 1907' K.B. Elevation (ft): 1915'  
Logged Interval (ft): 1700' To: 3625' Total Depth (ft): 3625'  
Formation:  
Type of Drilling Fluid: STARCH/CHEMICAL

Printed by WellSight LogViewer from WellSight Systems 1-800-447-1534 www.WellSight.com

## OPERATOR:

Company: F.G. Holl Company LLC  
Address: 9431 E. Central, Suite 100  
Wichita, Kansas 67206

## DRILLING CONTRACTOR:

### DUKE RIG #2

Double derrick; drill pipe 4.5' X H (16.25#); collars 6.25 x2.25 x 444'; Bit 1; 12.25,PRO-LOGIC PL 616 #504488, BIT #2 7 7/8,J2 RX23 #50409,3-15'S BIT 3,7 7/8, J2- HA20 #1802272, 3-15's;BIT 3, 7 7/8 J2 RX30 #10004 ,3-15'S BIT #4 7 7/8 J2 F47HY RJ2072 ,3-15'S Reference datum 8 ft above ground level. Poor Boy's (Martin- Decker) mechanical geolograph. Toolpusher -Dion Vasquez

## SURFACE CASING:

SURFACE CASING SET 8 5/8 INCHES 24 LBS AT 833' WITH 350 SAXS OF CEMENT  
PRODUCTION CASING SET 4.5 INCHES AT 3620' WITH 150 SAXS OF CEMENT

## CIRCULATION SYSTEM:

Pump Make:IDECO,Pump model: MM 550, liner size 6 ,stroke 15.  
Displace Starch to Mud at 2580'  
Mud/Co/Service Mud, Inc.-JASON WHITING-Great Bend, Ks-620-282-0556

## GAS DETECTION SYSTEM:

MBC Well Logging and Leasing -Analog Gas Detection.

**OPEN HOLE LOGS:**

Detail 1700'. Run CNL/CDL, DIL/MEL, BHCS, Gamma Ray up to grass roots, Drop filters, Hi Res RTD to Heebner 3120', Run Frac finder RTD to LKC at 3180' ; Pioneer Energy Services, Hays, KS, Recorded by Justin Henrickson; Log total depth (3626') was to rotary total depth (3625').

**COMPLETION:**

**PRODUCTION CASING SET ON LANSING/ KC**

**DRILL STEM TEST #1:**

**EAGLE TESTERS**

1309 PATTON  
GREAT BEND, KANSAS 67530  
GENE BUDIG

**DST #1**

**INTERVAL - 3208'-3277'**

**IBLW-FR BLW BLT BOB IN 6 MINUTES  
FBLW-GD BLW BLT BOB IN 2 MINUTES**

**REC-1100FT GIP, 15 FT OIL CUT MUD (80% OIL + 20% MUD)  
60 FT OIL CUT MUD (60% OIL + 40% MUD), 60 FT (30%OIL + 70% MUD)**

**30/60/45/90**

**SIP- 1086.58 - 1012.19  
IFP- 71.19 - 99.38  
FFP- 107.77 - 130.01  
HP-1644.73-1618.36**

**DRILL STEM TEST #2:**

**DST #2**

**3278-3290'**

**REC-425 FT WATER CHLORIDES 58,000  
IBLW-WL BLW BLT BOB IN 12 MINUTES  
FBLW-WK BLW BLT BOB IN 29 MINUTES**

**30/60/45/90**

**SIP-965.19-971.63  
IFP-42.10-117.58  
FFP-120.92-204.93  
HP-1629.05-1589.06**

**DRILL STEM TEST#3**

3346'-3380'  
REC-5 FT DRILLING MUD  
IBLW-WK BLW DIED IN 6 MINUTES  
FBLW-NO BLW  
15/30/15/30  
SIP-51.38-49.44  
IFP-95.87-96.11  
FFP-97.26-97.86  
HP-1680.84-1660.71

**DRILL STEM TEST #4**

DST #4  
INTERVAL -3374'-3400'  
IBLW-WL BLW FOR 4 MINUTES AND DIED  
FBLW-NO BLW  
REC-5 FT DRILLING MUD  
15/30/15/30  
SIP-51.28-49.52  
IFP-45.23-51.28  
FFP-45.13-44.81  
HP-1678.08-1651.22

**DRILL STEM TEST #5**

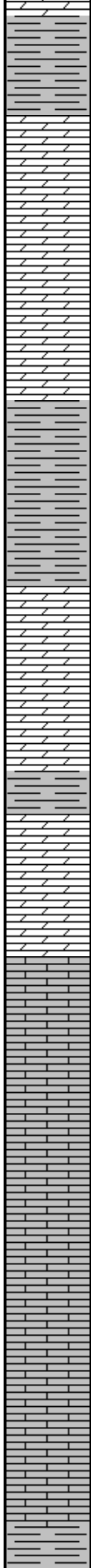
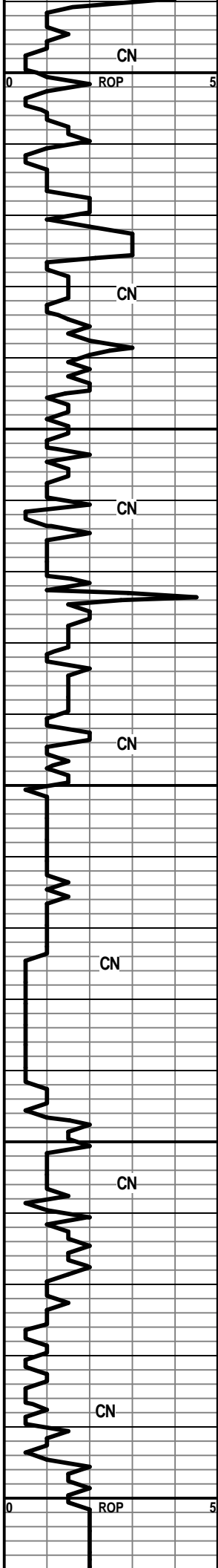
DST #5  
INTERVAL-3438-3541  
IBLW-STRNG BLW -GAS TO SURF IN 2 MINUTES  
FBLW-STRNG BLW  
REC-GAS- MAX GAS RATE AT 1950.32 MCF/D PLUS 135' OF DRILLING MUD  
10/60/45/90  
SIP-1223.36-1212.46  
IFP-750.61-548.82  
FFP-582.02-548.3  
HP-1770.47-1727.26

GAS RATES:	CHOKE(IN)	PSIG	GAS RATE MCF/D
	1.0	22.61	1064.14
	1.5	17.50	1950.32
	1.0	22.61	1064.14

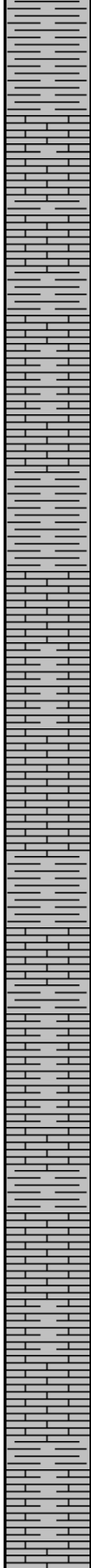
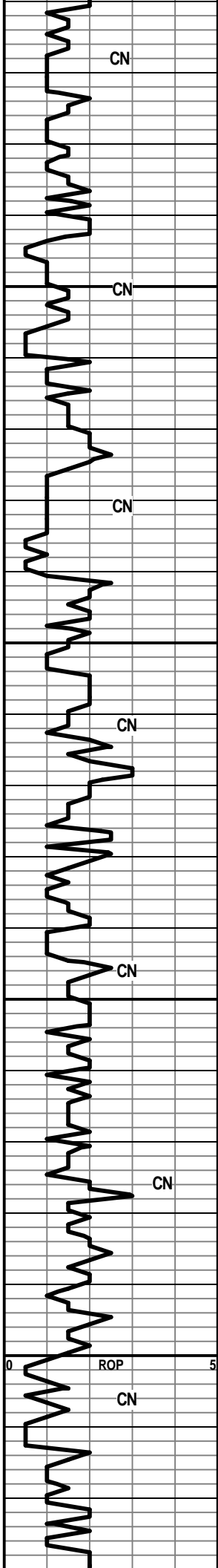
**WELLSITE GEOLOGIST:**

RENE HUSTEAD  
4714 N. PORTWEST CIRCLE  
WICHITA, KANSAS 67204  
PHONE (913) 208-3390





1800 DOLO-GRY-F-GRN-V-FOSS-BRIT-TR INTER-GRN POR  
 SH-RED/GRY-SFT-GUMMY  
**WINFIELD 1807' (+108')**  
 DOLO-GRY/TN-F-GRN-V-FOSS-GD-INTER-GRN/FOSS VUG POR  
 DOLO A.A.  
 DOLO-DK GRY-F-GRN-HD-DNS  
 DOLO-CRM W/BLK FOSS FRAGS-F-GRN -FR-INTER-GRN/FOSS VUG POR  
 DOLO-GRY/TN-F-GRN-HD-DNS  
 SH-GRY-FRM-DOLO  
 1850 SH-RED-SFT-GUMMY  
**TOWANDA 1872' (+43')**  
 DOLO-GRY/TN-F-GRN-HD-DNS  
 DOLO-TN-F-GRN V-OOL-FOSS-FR-INTER-PRT/TR OOL-MOLDIC POR  
 DOLO-OFF WHT-F-GRN-TR FOSS-FR INTER-GRN POR  
 DOLO-GRY-F-XLN-FOSS-TR FOSS VUG W/ CHRT-TN-FOSS-OPQ-FRSH  
 SH-GRY-FOSS  
 1900 **FT RILEY 1904' (+11)**  
 DOLO-TN/GRY-M-GRN-FOSS-FR INTER-GRN/SM VUG POR-CHRT-GRY-OPQ-SM PYR XLS IMBD  
 DOLO-TN W/BLK SPECS-F-GRN-FOSS-OOL-FR INTER-GRN POR  
 LS-TN-F-GRN-OOL-GD-SM OOL-MOLDIC POR  
 1950 LS-TN-F-GRN-OOL-HD-DNS  
 POOR SAMPLES  
 POOR SAMPLES  
 LS-TN-M-GRN-OOL-FOSS-GD-INTER-GRN/FOSS VUG-SM OOL-MOLDIC POR  
 LS-CRM-F-GRN-FOSS-OOL-FR INTER-GRN POR  
 2000 SH-GRY-BLKY-LMY



**B/FLORENCE 2016' (-101')**

SH-GRY-SFT-GUMMY

LS-GRY-F-XLN-FOSS-SHLY-BRIT-DNS

POOR SAMPLE

LS-OFF WHT W/BLK FOSS FRAGS-BRIT-VFOSS-FR INTER-GRN POR

2050 SH-GRY/RED-GUMMY

LS-TN-F-GRN-OOL-F-SM OOL-MOLDIC POR

**COUNCIL GROVE 2075' (-160')**

SH-GRY/GRN-FRM-BLKY-FOSS

SH-DK GRY-SFT-GUMMY

POOR SAMPLE

2100 SH-RED-SFT-GUMMY

LS-OFF WHT-F-XLN-FOSS-OOL-HD-DNS

LS-OFF WHT-VF-XLN-BRIT-FOSS-FR INTER-XLN POR

SH-GRY-FRM-SILTY-BLKY-HEM

LS-GRY-F-GRN-BLK OOL-BRIT-FR INTER-PRT POR

2150 SH-GRY-BLKY-LMY

LS-GRY-V-F-XLN-FOSS-TR PYR XLS IMBD-SHLY-HD-DNS

LS-TN-F-XLN-FOSS-HD-DNS

SH-LT GRY-BLKY-WAXEY

SH-RED-GRY-SFT-GUMMY

LS-TN-F-XLN-OOL-HD-DNS

LS-GRY-F-GRN-SHLY-FOSS-HD-DNS

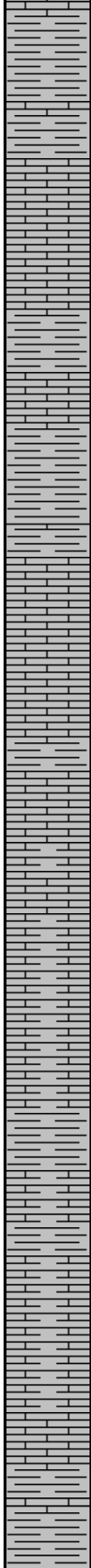
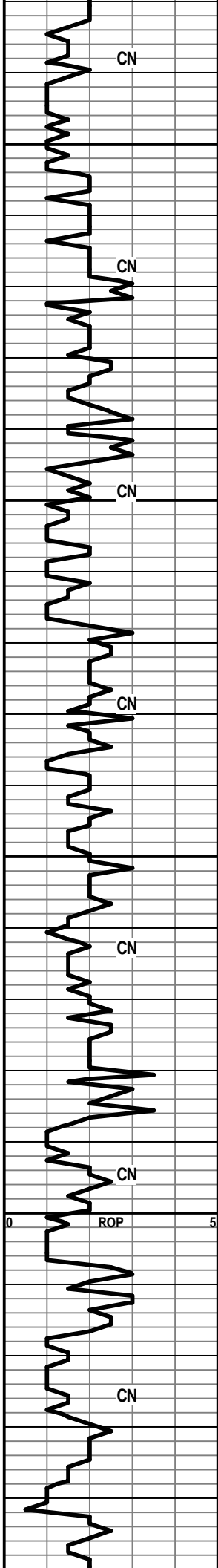
2200 LS-OFF WHT-F-XLN-OOL-FR OOL-MOLDIC POR

SH-GRY-BLKY-WAXEY/LMY

LS-GRY-F-GRN-V-SHLY-FOSS

LS-TN/GRY-F-XLN-HD-DNS

GEOLOGIST ON LOCATION



LS-GRY-F-GRN-FOSS-FRAGS-BRIT-SHLY  
 SH-RED-SFT-GUMMY

**NEVA 2251' (-336')**  
 2250 LS-OFF WHT-F-GRN-BRIT-TR PP POR TO NO VIS POR

LS-OFF WHT-F-XLN-TR FOSS-HD-DNS  
 LS.A.A.

SH-GRY-BLKY-LMY  
 LS-OFF WHT W/BLK SPECS-F-GRN-FOSS-BRIT-DNS

SH-RED-SFT-GUMMY

2300 **RED EAGLE 2308' (-393')**  
 LS-CRM-F-XLN-FOSS-OOL-PR TO FR INTER-XLN POR-NO VIS GAS INCRS

LS-TN-F-GRN-FOSS-SHLY-HD-DNS

SH-BLK-BLKY

LS-TN-F-GRN-FOSS-TR OOL-SHLY IP-HD-TR PP POR-NO VIS GAS INCRS

2350 SH-GRY-LMY-BLKY  
 LS-BRN-F-XLN-V-FOSS-HD-DNS

LS-TN-V-F-GRN-BRIT-TR PP POR-HD-DNS

SH-GRY-FOSS-LMY-BLKY  
 LS-CRM-V-F-GRN-HD-DNS

LS-OFF WHT W/BLK FOSS FRAGS-F-GRN-CHLKY  
 IP-V-FOSS-SM BLK OOL-FR INTER-GRN POR-NO VIS GAS INCRS

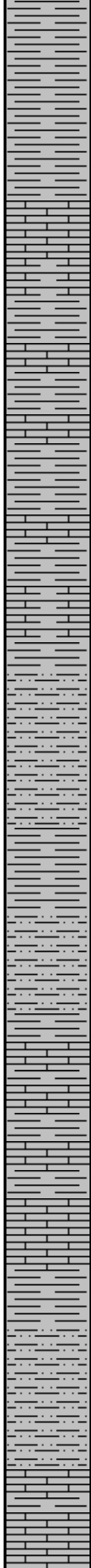
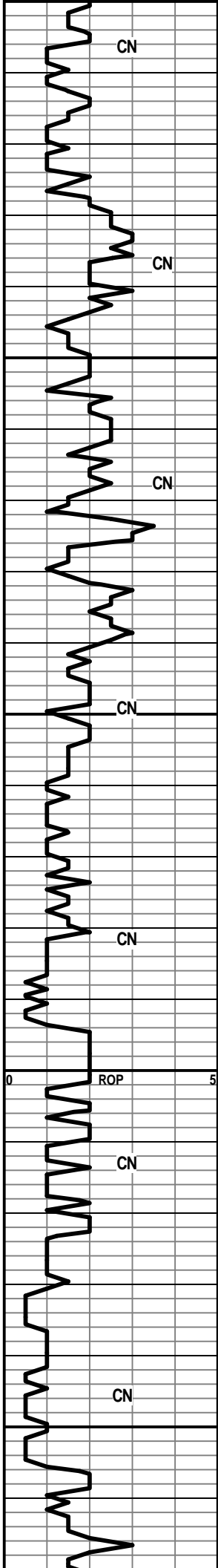
2400 LS-GRY-F-GRN-FOSS-BRIT-DNS  
 SH-GRY-SFT-GUMMY  
 LS-BRNISH RED-F-XLN-HD-DNS  
 LS-GRY-F-XLN-FOSS-HD-DNS

SH-GRY/GRN-FOSS-BLKY  
 LS-LT BRN-F-XLN-FOSS-HD-DNS

SH-GRY-GUMMY  
 LS-TN-F-XLN-FOSS-HD-DNS

50

HOTWIRE-40 UNIT GAS INCRS.



24  
2500  
2550  
2600  
2650

SH-GRY-SFT-GUMMY W/SH-DK GRY-FRM-FOSS-BLKY

SHALE-GRY-BLK-GRN-RED-BLKY-SILTY-FOSS

LS-TN-F-XLN-FOSS-HD-DNS

LS-OFF WHT-F-XLN-V-OOL-BRIT-DNS

SH-GRY-SPLNTY-FOSS

SH-RED-SFT-GUMMY

LS-TN-F-GRN-HD-DNS

SH-GRY-BLKY-LMY-FOSS

LS-OFF WHT-F-GRN-TR FOSS-HD-DNS

SH-GRY-SFT-SILTY-FOSS

SLTSS-FRSTY GRY-F-GRN-SHLY-HEM-MICA

SH-GRY-SFT-GUMMY-SILTY

SH A.A.

SLTSS-FRSTY WHT-F-GRN-TR SH IMBD-HEM-MICA

**STOTLER 2596' (-681')**

LS-LT BRN-M-GRN-FOSS-TR SH IMBD-HD-TR INTER-GRN  
POR TO NO VIS POR

SH-DK GRY-BLKY-WAXEY

LS-TN-F-XLN-FOSS-HD-DNS

LS-OFF WHT-F-GRN-FOSS-SILTY-HD-DNS W/TR GLAU  
IMBD

SH-GRY-SFT-SILTY

SLTSS-FRSTY GRY-F-GRN-SHLY-HEM-MICA

**TARKIO 2656' (-741')**

LS-TN-F-XLN-TR FOSS-HD-DNS

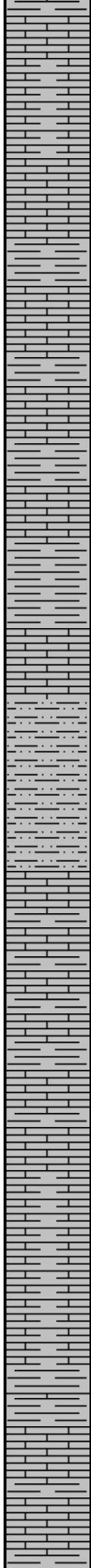
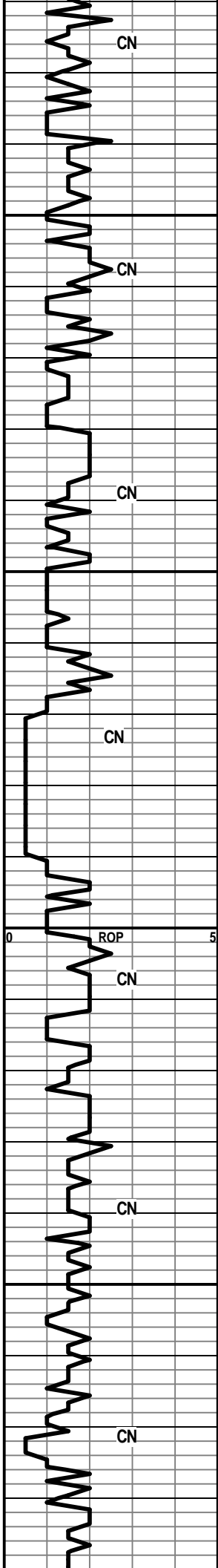
LS-CRM-F-GRN-FOSS-HD-DNS W/TR SH-LT GRY-IMBD

DIS-PLACE @2580' STARCH TO CHEMICAL MUD

MUD DATA @2604'  
WT. 8.6  
VIS 52  
FIL-7.6  
LCM=0

25 UNIT GAS INCRS





SH-GRY-BLKY-WAXEY-LMY

LS-GRY-F-GRN-FOSS-BRIT-DNS  
SH-GRY-FRM-SPLNTY

2700 LS-TN-F-XLN-FOSS FRAGS-HD-DNS

SH-GRY-BLKY-FOSS-LMY

LS-TN-F-XLN-HD-DNS

SH-GRY-FOSS-LMY

LS-GRY-F-XLN-FOSS-SHLY

POOR SAMPLE

2750 SH-GRY-SILTY-BLKY

LS-CRM-F-XLN-FOSS-HD-DNS

SLTSS-FRSTY GRY-F-GRN-FRI-SHLY-HEM-MICA

SLTSS A.A.

**HOWARD 2794' (-879')**

LS-LT BRN-F-XLN-FOSS-HD-DNS W/ CHRT-TN-OPQ-FRSH

2800 SH-LT GRY-BLKY

LS-CRM-F-GRN-PYR IMBD-HD-DNS

LS-TN-F-XLN-FOSS FRAGS-SH-LT GRY-IMBD

LS A.A.

LS-GRY-F-XLN-FOSS-SHLY W/ SH-GRY-FOSS-BLKY

2850 LS-DK BRN-F-XLN-HD-DNS W/ TR FOSS AND SH IMBD

**TOPEKA 2870' (-955')**

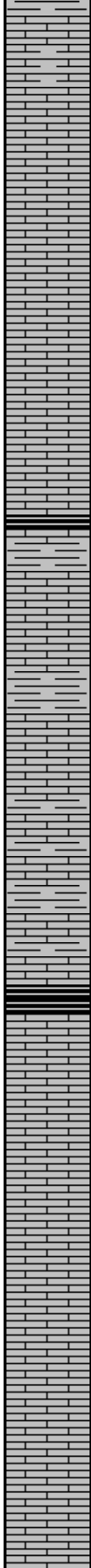
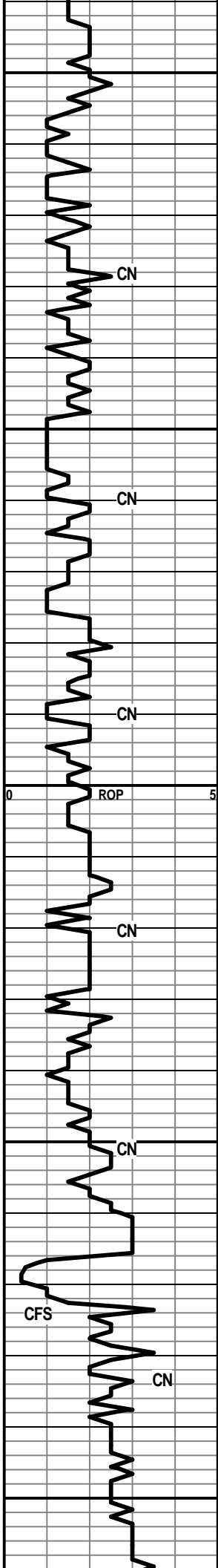
LS-CRM-F-GRN-FOSS-V-SM OOL-FR TO GD PP POR W/ TR  
SM OOL-MOLDIC POR-GAS INCRS

LS-TN-V-F-XLN-HD-DNS W/ CHRT-TN-OPQ-FRSH

SH-GRY-BLKY-WAXEY

HOTWIRE 20 UNIT GAS INCRS

HOTWIRE 30 UNITS



2900 LS-GRY-F-XLN-HD-TR FOSS-SHLY-DNS

LS-GRY-F-XLN-FOSS-BRACH-HD-DNS W/CHRT-VARIG BLK AND WHT-OPQ-FRSH

LS.A.A.

LS-TN-F-GRN-CHLKY IP-FOSS-FUS-BRIT-DNS

LS-TN-F-GRN-V-FOSS-OOL-TR FR INTER-GRN POR-NO VIS SHOW

LS-REDDISH BRN-F-GRN-FOSS-FUS-HD-DNS

2950 LS-TN-F-XLN-FOSS-CHLKY IP-TR INTER-XLN POR BUT MSTLY DNS-NO VIS SHOW

**QUEEN**

SH-BLK-CARB

LSCRM-F-XLN-FOSS-CHLKY IP-DNS-NO VIS SHOW

LS.A.A.

SH-GRY-BLKY-LMY-FOSS

LS-TN/BRN-V-F-XLN-HD-DNS

3000 LS-CRM-F-GRN-FOSS FRAGS-HD-DNS

SH-GRY-BLKY-LMY-FOSS FUS

LS-TN-F-GRN-FOSS-OOL-HD-DNS

**KING**

SH-BLK-CARB

LS-CRM-F-GRN-FOSS-OOL-FR VUG POR-NO VIS STN-TR PP WHT FLOR-NO VIS CUT

LS-CRM-F-XLN-OOL-FOSS-GD VUG/OOL-MOLDIC POR-LT BRN STN-NO VIS FLOR-GD STRM CUT-FREE OIL

3050 LS-CRM-F-GRN-FOSS-GD-VUG/OOL-MOLDIC POR-LT BRN STN-NO VIS FLOR-GD STRM CUT-FO

LS-CRM-F-XLN-OOL-V-GD OOL-MOLDIC POR-TR LT BRN STN-NO VIS FLOR-TR LT STRM CUT

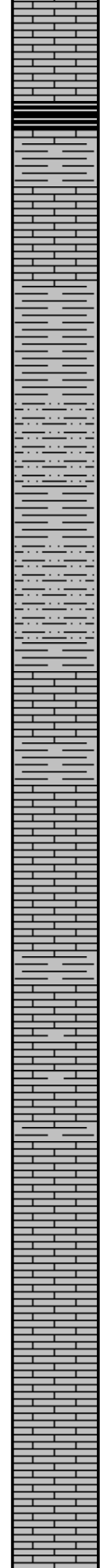
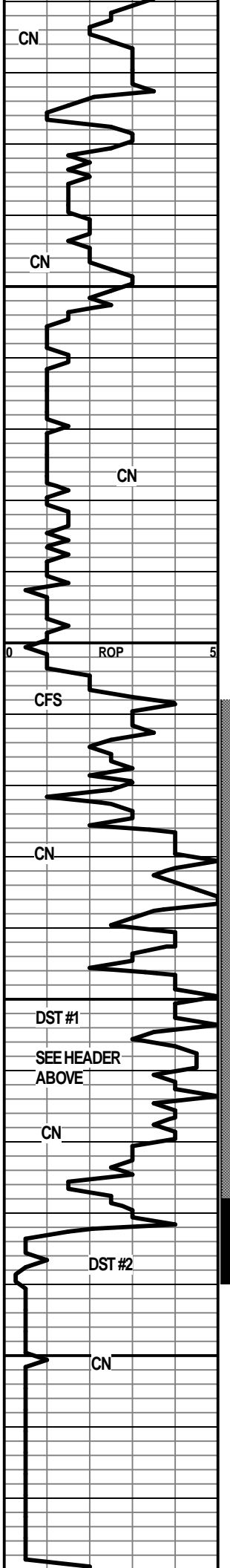
LS-CRM-F-XLN-FOSS-HD-DNS W/CHRT-GRY-OPQ-FOSS

SH-GRY-SPLNTY

LS-CRM-F-XLN-HD-DNS W/TR OF EDGE STN-LT BRN STN ON EDGE/SM VUG-NO VIS FLOR-GD STRM CUT-FO

3100 LS-TN-F-XLN-FOSS-OOL-HD-PR SM VUG POR IP-LT BRN STN-NO VIS FLOR-GD STRM CUT-FREE OIL (1 PC) M-XL'S W/ DK BRN STN

HOTWIRE-10 UNIT GAS INCRS



LS-OFF WHT-OPQ-VF-XLN-HD-DNS TR DK BLK STN-NO VIS FLOR-NO VIS CUT

**HEEBNER 3123' (-1208')**

SH-BLK-CARB

**TORONTO 3136' (-1221')**

LS-CRM-F-XLN-GD-INTER-GRN/XLN AND LG VUG POR-LT BRN STN-SCATT WHT FLOR-GD STRM CUT-GD ODOR-FREE OIL

3150 SH-DK GRY-FRM-BLKY

SH-GRY/GRN-BLKY TR PYRIN TRAY

SH-DK GRY-SFT-SILTY  
SLTSS-FRSTY GRY-F-GRN-SHLY-MICA-HEM

SH-DK GRY-BLKY-SILTY TR PYR IN TRAY

SLSS-FRSTY GRY-F-GRN-SHLY-MICA-HEM

3200 **BROWN LS. 3207' (-1292')**

LS-TN-F-XLN-HD-DNS-TR FOSS

**LANSING/KC 3220' (-1305')**

LS-OFF WHT-F-GRN-GD INTER-GRN/PPOR-LT BRN STN-NO VIS FLOR-IMMED GD CUT-FNT ODOR

LS-OFF WHT-F-XLN-HD-DNS W/CHRT-OFF WHT-OPQ-FRSH

LS-TN-F-XLN-HD-DNS W/TR LS-OFF WHT-F-XLN-FR PPOR-LT BRN STN-NO VIS FLOR-FR STRM CUT-FNT ODOR

LS-OFF WHT-F-XLN-HD-DNS W/CHRT-OFF WHT-QOP-FRSH-TR PPPOR-DK BLK STN-NO VIS FLOR-GD STRM CUT-FNT ODOR

LS-TN-F-XLN-FOSS-OOL-HD-DNS W/TR OF FREE OIL AND GOOD ODOR W/CHRT-CLR-FOSS-FRSH

LS-REDDISH BRN-G-XLN-FOSS-OOL-FR TO GD INTER/GRN/PPOR-LT BRN STN-DULL WHT FLOR-GD STRM CUT-GD ODOR-FO

LS-BRN-F-GRN-OOL-DK BRN STN-GD INTER-GRN/PP/VUG POR-DULL WHT FLOR-EX STRM CUT-GD ODOR-FREE OIL

LS-CRM-F-XLN-OOL-GD-OOL-MOLDIC POR-LT BRN STN-SCATT YEL/GLD FLOR-EX STRM CUT-STRNG ODOR-FREE OIL

3300 LS-TN-F-XLN-OOL-GD-OOL-MOLDIC POR-LT BRN STN-YEL/GLD FLOR-GD STRM CUT-STRNG ODOR-FREE OIL

LS A.A.

LS-TN-F-XLN-OOL-GD-OOL-MOLDIC POR-SCATT LT BRN STN BUT MSTLY BARREN

HOTWIRE 75 UNIT GAS INCRS

HOTWIRE 40 UNIT GAS INCRS

MUD DATA @ 3207'  
WT. 9.2  
VIS 50  
FIL 8.0  
LCM 0

STRAP=3300.19  
BOARD=3301.66  
SHORT=1.47

HOTWIRE 34 UNIT GAS INCRS

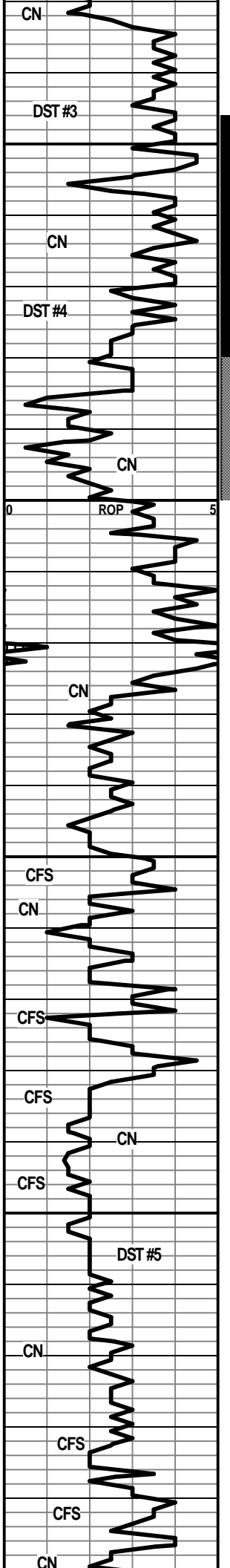
HOTWIRE 10 UNIT GAS INCRS

HOTWIRE 30 UNIT GAS INCRS

HOTWIRE 100 UNIT GAS INCRS

GAS DETECTOR NOT WORKING

MUD DATA @ 3277'  
WT. 9.3  
VIS 49  
FIL 8.0  
LCM 0



3350 LS-TN-F-XLN-HD-DNS W/PYR IN TRAY

LS-CRM-F-XLN-OOL-FR INTER-PRT POR-LT BRN STN-DULL WHT FLOR-FR STRM CUT-GD ODOR-SSFO

LS-CRM-F-XLN-OOL-W/LT BRN EDGE STN

LS-OFF WHT-F-XLN-V-OOL-TR INTER-PRT POR-W/LT BRN STN-NO VIS FLOR-GD STRM CUT W/CHLK IN TRAY

SH-GRY-SPLNTY

LS-CRM-F-GRN-OOL-FR TO GD INTER-GRN/OOL-MOLDIC POR-LT BRN STN-BRITE WHT FLOR-GD STRM CUT-GD ODOR

3400 LS-TN-F-XLN-OOL-HD-DNS

LS-OFFWHT/BLUISH TINT-F-XLN-HD-DNS

LS-TN-F-XLN-HD-DNS W/CHRT IN TRAY

LS-CRM-F-XLN-OOL-TR INTER-PRT POR-NO VIS SHOW

LS-CRM-F-XLN-BRIT-CHLKY-TR GLAU IMBD-DNS

SH-RED-SFT-GUMMY

3450 SH-RED/GRN-FRI-SNDY W/CHRT-TN-OPQ-FRSH

SH-GRY-RED-SFT-SNDY W/CHRT-TN/GRY-OPQ-FRSH

LS-TN-F-XLN-OOL-HD-DNS

**BASE/KC 3470' (-1555')**

SH-GRY-RED-FRM-BLKY W/TR CHRT-TN-OPQ-FRSH

SHALES-RED-GRY-FRM-SNDY W/1 PC SS-FRTY WHT-TT-RNDED-WELL SRTEG-SHLY-HEM-

CHRT-OFF WHT-OPQ-TRIP-W/SH RED IMBD AND SND GRNS-NO VIS FLOR-NO VIS SHOW

3500 SH-GRY-RED-FRM-BLKY-SNDY IPW/CHRT-CLR-FOSS-FRSH

SH-RED-FRM-SNDY W/CHRT-RED-OPQ-FRSH

SH-RED-FRM-BLKY-SNDY IP-W/CHRT-TN-OPQ-FRSH

SH-RED-GRY-DK GRY-SPLNTY W/CHRT-VARIG-OPQ-FRSH-TR DOLO-TNF-GRN-SNDY-NO VIS FLOR-NO VIS SHOW

SH-RED-GRY-SPLNTY-SNDY IP-PYR XLS-W/CHRT-TN-OPQ-FRSH

**REGAN 3532' (-1617)**

SS-FRSTY GRN-FRI-ANG TO SUB-ANG-PR SRTEG-GLAU-FR INTER-GRN POR-GAS INCRS-ABUNDT SND GRNS IN TRAY

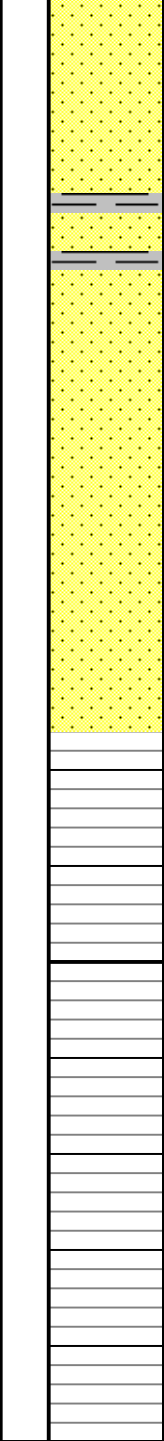
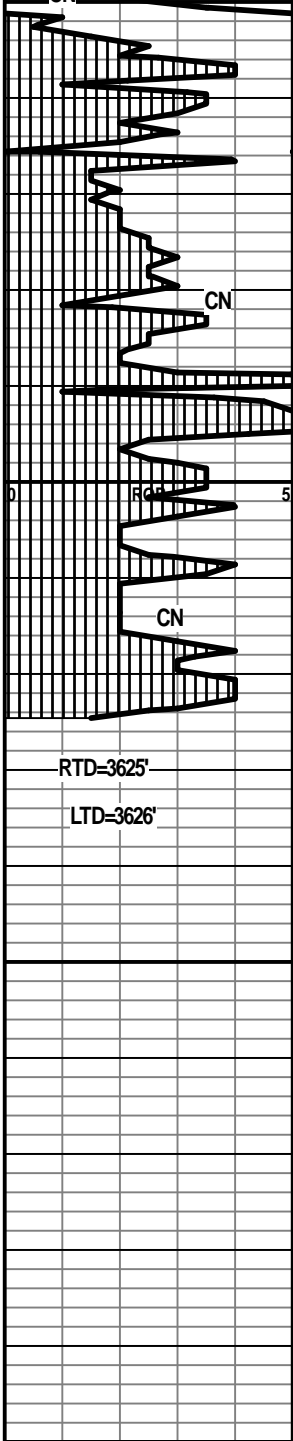
SS-FRSTY CLR-FRI-ANG TO SUB-ANG-PR SRTEG-QTZ CMT-FR INTER-GRN POR-NO VIS FLOR-NO VIS CUT -NO ODOR

MUD DATA @ 3380'  
 WT. 9.25  
 VIS 51  
 FIL 8.0  
 LCM 0

MUD DATA @ 3478'  
 WT. 9.2  
 VIS 51  
 FIL-7.6  
 LCM-0

HOTWIRE -45 UNIT GAS INCRS  
 GAS DETECTOR OFF CHART

MUD DATA @ 3551'



35  
 SS-A.A. TR DK BLK EDGE STN-BRITE WHT FLOR-NO VIS CUT

SS-CLR FRSTY-FRI TO TT-RNDED TO SUBANG-PR STRTED-PR TO GD  
 INTER-GRN POR-TR BRN STN-NO VIS FLOR-NO VIS CUT  
 W/CHRT-TN-OPQ-FRSH-SH-RED/GRY-BLKY-V-FRM-SND GRNS IN BOTTOM  
 OF TRAY

SH-GRY/GRN-BLKY-CHRT-RED-OPQ-FRSH-CHRT-OFF WHT-TRIP-BRIT W/DK  
 BRN STN-NO VIS CUT-SS.A.A.

SH-GRY-SPLNTY-SH-RED-FRM-BLKY-SNDY-CHRT-TN-OPQ-FRSH-CHRT-OFF  
 WHT-TRIPW/DK STN-BRITE WHT FLOR-NO VIS CUT

SS-SH-CHRT A.A.

SH-GRY/GRN-SPLNTY W TR SS.A.A. IN TRAY

3600

SH-GRY-SPLNTY-W/SS-FRSTY CLR-FRI-ANG-SUBANG-PR SRTEQ-QRTZ  
 CMT-PYR IMBD-NO VIS SHOW

SH-RED-GRY-FRM-SNDY IP-W/SS-FRSTY CLR-FRI TO TT-ANG TO SUB  
 ANG-PR SRTEQ-QRTZ CMT-NO VIS STN-NO VIS CUT NO ODOR

3650

00

WT. 9.1  
 VIS 51  
 FIL-7.2  
 LCM TR

MUD DATA @ 3644'  
 WT. 9.3  
 VIS 55  
 FIL.8.4  
 LCM 1