

KANSAS CORPORATION COMMISSION
OIL & GAS CONSERVATION DIVISION

TEMPORARY ABANDONMENT WELL APPLICATION

OPERATOR: License#
Name:
Address 1:
Address 2:
City: State: Zip:
Contact Person:
Phone:
Contact Person Email:
Field Contact Person:
Field Contact Person Phone:

API No. 15-
Spot Description:
Sec. Twp. S. R.
GPS Location: Lat: Long:
Datum: NAD27 NAD83 WGS84
County: Elevation:
Lease Name: Well #:
Well Type: Oil Gas OG WSW Other:
SWD Permit #: ENHR Permit #:
Gas Storage Permit #:
Spud Date: Date Shut-In:

Table with 7 columns: Conductor, Surface, Production, Intermediate, Liner, Tubing. Rows include Size, Setting Depth, Amount of Cement, Top of Cement, Bottom of Cement.

Casing Fluid Level from Surface: How Determined? Date:
Casing Squeeze(s): to w / sacks of cement, to w / sacks of cement. Date:
Do you have a valid Oil & Gas Lease? Yes No
Depth and Type: Junk in Hole at Tools in Hole at Casing Leaks: Yes No Depth of casing leak(s):
Type Completion: ALT. I ALT. II Depth of: DV Tool: w / sacks of cement Port Collar: w / sack of cement
Packer Type: Size: Inch Set at: Feet
Total Depth: Plug Back Depth: Plug Back Method:

Geological Data:

Table with 4 columns: Formation Name, Formation Top, Formation Base, Completion Information. Rows 1 and 2.

UNDER PENALTY OF PERJURY I HEREBY ATTEST THAT THE INFORMATION CONTAINED HEREIN IS TRUE AND CORRECT TO THE BEST OF MY KNOWLEDGE

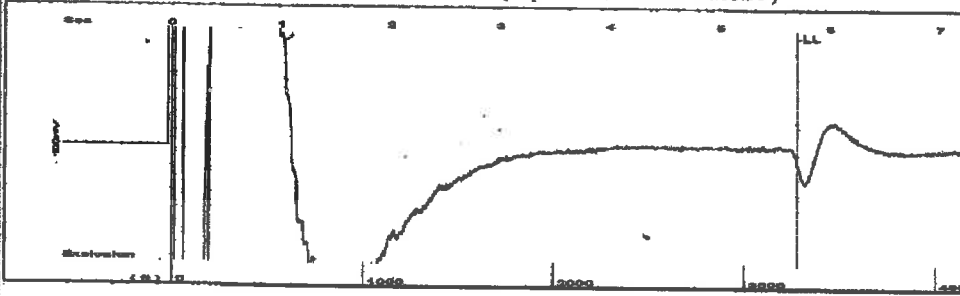
Submitted Electronically

Do NOT Write in This Space - KCC USE ONLY
Date Tested: Results: Date Plugged: Date Repaired: Date Put Back in Service:
Review Completed by: Comments:
TA Approved: Yes Denied Date:

Mail to the Appropriate KCC Conservation Office:

Map of Kansas with 4 numbered districts and corresponding office addresses and phone numbers.

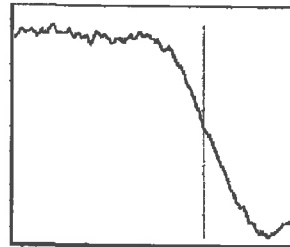
Group: Belpre Well: Smith Leon 3-10 (acquired on: 01/26/22 12:01:50)



Time 5.696 sec
 Joints 107.454 Its
 Depth 3275.20 ft

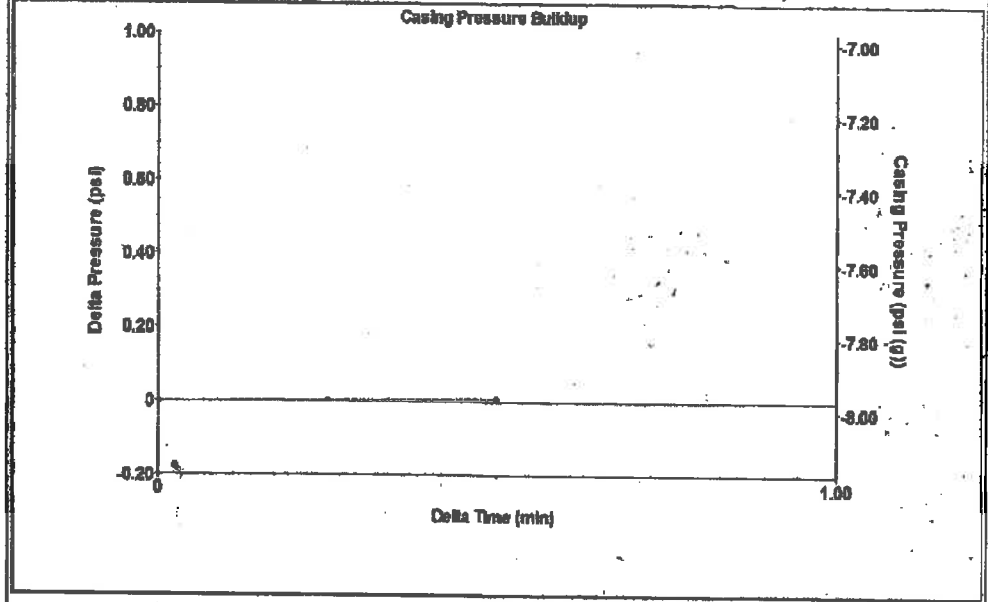
Liquid level calculated with
 user supplied Acoustic Velocity

Acoustic Velocity 1150 ft/s



Analysis Method: Acoustic Velocity

Group: Belpre Well: Smith Leon 3-10 (acquired on: 01/26/22 12:01:50)



Change in Pressure 0.01 psi PT13440
 Change in Time 0.50 min Range 0 - ? psi

Group: Belpre Well: Smith Leon 3-10 (acquired on: 01/26/22 12:01:50)

Production					
Current	Potential	Casing Pressure		Producing	
Oil -*- BBL/D	-*- BBL/D	-8.0 psi (g)		Annular	
Water -*- BBL/D	-*- BBL/D	Casing Pressure Buildup		Gas Flow	
Gas -*- Mscf/D	-*- Mscf/D	0.0 psi		% Liquid	0 Mscf/D
		0.50 min			100 %
IPR Method	Vogel	Gas/Liquid Interface Pressure			
PBHP/SBHP	-*-	-7.3 psi (g)			
Production Efficiency	0.0				
		Liquid Level Depth			
Oil 40 deg API		3275.20 ft			
Water 1.05 Sp.Gr.H2O		Pump Intake Depth			
Gas 0.85 Sp.Gr.AIR		4237.00 ft			
Acoustic Velocity	1150 ft/s	Formation Depth			
		4326.00 ft			
Formation Submergence				Pump Intake	
Total Gaseous Liquid Column HT (TVD)	962 ft			318.7 psi (g)	
Equivalent Gas Free Liquid HT (TVD)	962 ft			Producing BHP	
				359.1 psi (g)	
Acoustic Test				Static BHP	
				-*- psi (g)	



Group: Belpre Well: Smith Leon 3-10 (acquired on: 01/26/22 12:01:50)

Entered Acoustic Velocity for Liquid Level depth determination

February 03, 2022

Loveness Mpanje
F. G. Holl Company L.L.C.
9431 E CENTRAL STE 100
WICHITA, KS 67206-2563

Re: Temporary Abandonment
API 15-047-21169-00-00
SMITH LEON 3-10
NE/4 Sec.10-24S-17W
Edwards County, Kansas

Dear Loveness Mpanje:

"Your temporary abandonment (TA) application for the well listed above has been approved. In accordance with K.A.R. 82-3-111 the TA status of this well will expire 02/03/2023.

- * If you return this well to service or plug it, please notify the District Office.
- * If you sell this well you are required to file a Transfer of Operator form, T-1.
- * If the well will remain temporarily abandoned, you must submit a new TA application, CP-111, before 02/03/2023.

You may contact me at the number above if you have questions.

Very truly yours,

Michael Maier"