

KANSAS CORPORATION COMMISSION
OIL & GAS CONSERVATION DIVISION

TEMPORARY ABANDONMENT WELL APPLICATION

OPERATOR: License#
Name:
Address 1:
Address 2:
City: State: Zip:
Contact Person:
Phone:
Contact Person Email:
Field Contact Person:
Field Contact Person Phone:

API No. 15-
Spot Description:
Sec. Twp. S. R.
GPS Location: Lat: Long:
Datum: NAD27 NAD83 WGS84
County: Elevation:
Lease Name: Well #:
Well Type: Oil Gas OG WSW Other:
SWD Permit #: ENHR Permit #:
Gas Storage Permit #:
Spud Date: Date Shut-In:

Table with 7 columns: Conductor, Surface, Production, Intermediate, Liner, Tubing. Rows include Size, Setting Depth, Amount of Cement, Top of Cement, Bottom of Cement.

Casing Fluid Level from Surface: How Determined? Date:
Casing Squeeze(s): to w / sacks of cement, to w / sacks of cement. Date:
Do you have a valid Oil & Gas Lease? Yes No
Depth and Type: Junk in Hole at Tools in Hole at Casing Leaks: Yes No Depth of casing leak(s):
Type Completion: ALT. I ALT. II Depth of: DV Tool: w / sacks of cement Port Collar: w / sack of cement
Packer Type: Size: Inch Set at: Feet
Total Depth: Plug Back Depth: Plug Back Method:

Geological Date:

Table with 4 columns: Formation Name, Formation Top, Formation Base, Completion Information. Rows 1 and 2.

UNDER PENALTY OF PERJURY I HEREBY ATTEST THAT THE INFORMATION CONTAINED HEREIN IS TRUE AND CORRECT TO THE BEST OF MY KNOWLEDGE

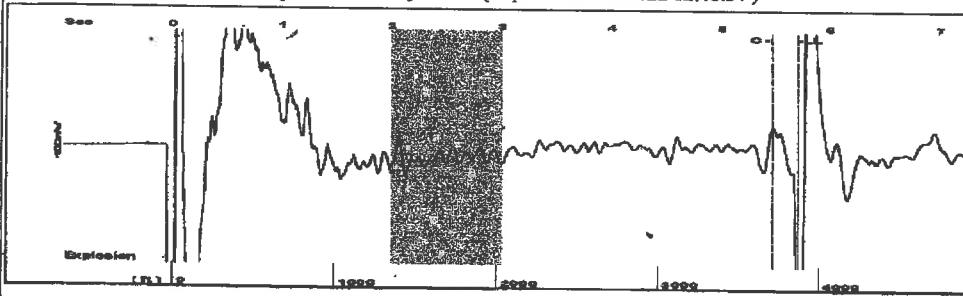
Submitted Electronically

Do NOT Write in This Space - KCC USE ONLY
Date Tested: Results: Date Plugged: Date Repaired: Date Put Back in Service:
Review Completed by: Comments:
TA Approved: Yes Denied Date:

Mail to the Appropriate KCC Conservation Office:

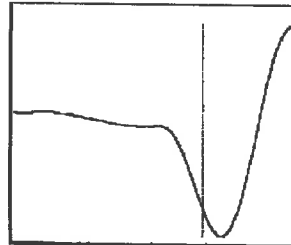
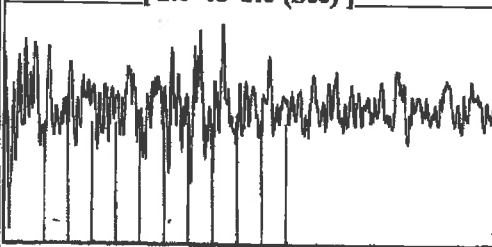
Table with 2 columns: Office Address, Phone. Rows for District Office #1, #2, #3, #4.

Group: Belpre Well: Meyer 1-28 (acquired on: 01/26/22 12:48:54)



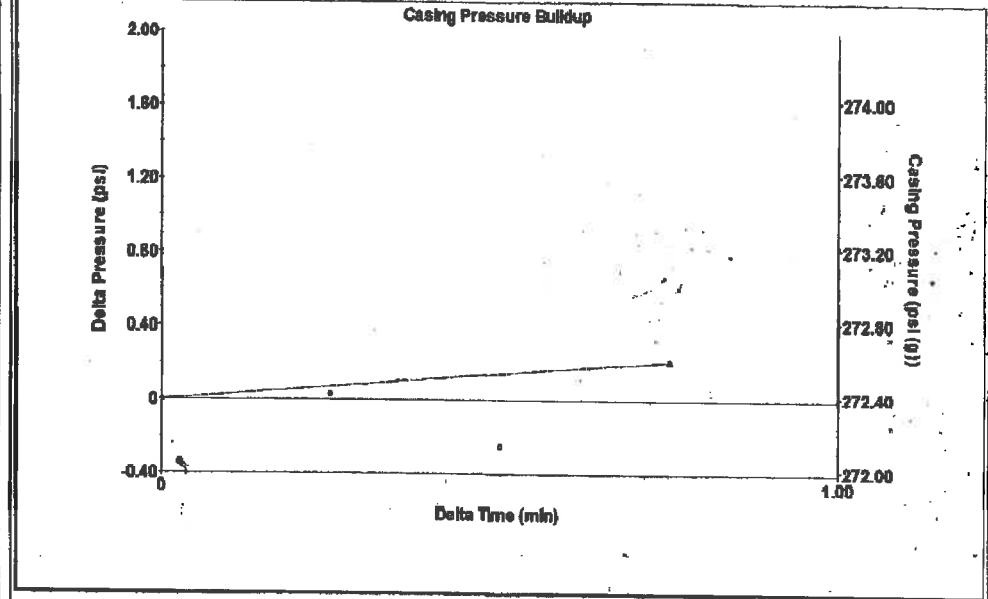
Filter Type High Pass Automatic Collar Count Yes Time 5.7 sec
 Manual Acoustic Velo 1257.89 ft/s Manual JTS/sec 20,2429 Joints 124.578 Its
 Depth 3870.65 ft

[2.0 to 3.0 (Sec)]



Analysis Method: Automatic

Group: Belpre Well: Meyer 1-28 (acquired on: 01/26/22 12:48:54)

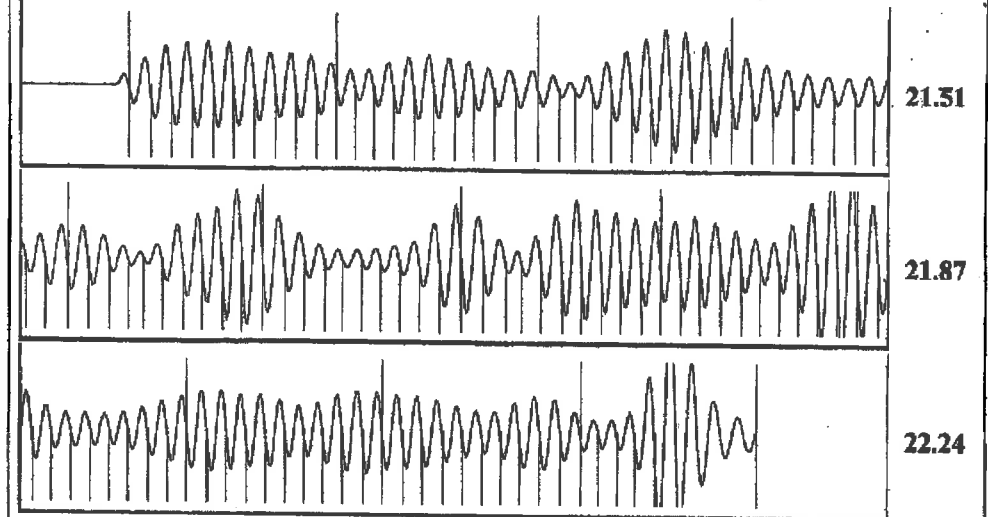


Change in Pressure 0.21 psi PT13440
 Change in Time 0.75 min Range 0 - ? psi

Group: Belpre Well: Meyer 1-28 (acquired on: 01/26/22 12:48:54)

Production Current Potential Oil *- BBL/D Water *- BBL/D Gas *- Mscf/D IPR Method Vogel PBHP/SBHP *- Production Efficiency 0.0 Oil 40 deg.API Water 1.05 Sp.Gr.H2O Gas 0.63 Sp.Gr.AIR Acoustic Velocity 1358.12 ft/s	Casing Pressure 272.4 psi (g) Casing Pressure Buildup 0.2 psi 0.75 min Gas/Liquid Interface Pressure 297.8 psi (g) Liquid Level Depth 3870.65 ft Pump Intake Depth 4320.00 ft Formation Depth 4300.00 ft Formation Submergence Total Gaseous Liquid Column HT (TVD) 449 ft Equivalent Gas Free Liquid HT (TVD) 318 ft Acoustic Test	Producing Annular Gas Flow 6 Mscf/D % Liquid 70 % Pump Intake 402.8 psi (g) Producing BHP 396.2 psi (g) Static BHP *- psi (g)
--	---	---

Group: Belpre Well: Meyer 1-28 (acquired on: 01/26/22 12:48:54)



Acoustic Velocity 1358.12 ft/s Joints counted 114
 Joints Per Second 21.8558 jts/sec Joints to liquid level 124.578
 Depth to liquid level 3870.65 ft Filter Width 18,2429 22,2429
 Automatic Collar Count Yes Time to 1st Collar 0.248 5.464

February 03, 2022

Loveness Mpanje
F. G. Holl Company L.L.C.
9431 E CENTRAL STE 100
WICHITA, KS 67206-2563

Re: Temporary Abandonment
API 15-047-20184-00-00
MEYER 1
NW/4 Sec.28-24S-16W
Edwards County, Kansas

Dear Loveness Mpanje:

"Your temporary abandonment (TA) application for the well listed above has been approved. In accordance with K.A.R. 82-3-111 the TA status of this well will expire 02/03/2023.

- * If you return this well to service or plug it, please notify the District Office.
- * If you sell this well you are required to file a Transfer of Operator form, T-1.
- * If the well will remain temporarily abandoned, you must submit a new TA application, CP-111, before 02/03/2023.

You may contact me at the number above if you have questions.

Very truly yours,

Michael Maier"