

KANSAS CORPORATION COMMISSION
OIL & GAS CONSERVATION DIVISION

TEMPORARY ABANDONMENT WELL APPLICATION

OPERATOR: License#
Name:
Address 1:
Address 2:
City: State: Zip:
Contact Person:
Phone:
Contact Person Email:
Field Contact Person:
Field Contact Person Phone:

API No. 15-
Spot Description:
Sec. Twp. S. R.
feet from N / S Line of Section
feet from E / W Line of Section
GPS Location: Lat: , Long:
Datum: NAD27 NAD83 WGS84
County: Elevation: GL KB
Lease Name: Well #:
Well Type: Oil Gas OG WSW Other:
SWD Permit #: ENHR Permit #:
Gas Storage Permit #:
Spud Date: Date Shut-In:

Table with 7 columns: Conductor, Surface, Production, Intermediate, Liner, Tubing. Rows include Size, Setting Depth, Amount of Cement, Top of Cement, Bottom of Cement.

Casing Fluid Level from Surface: How Determined? Date:
Casing Squeeze(s): to w / sacks of cement, to w / sacks of cement. Date:
Do you have a valid Oil & Gas Lease? Yes No
Depth and Type: Junk in Hole at Tools in Hole at Casing Leaks: Yes No Depth of casing leak(s):
Type Completion: ALT. I ALT. II Depth of: DV Tool: w / sacks of cement Port Collar: w / sack of cement
Packer Type: Size: Inch Set at: Feet
Total Depth: Plug Back Depth: Plug Back Method:

Geological Data:

Table with 4 columns: Formation Name, Formation Top, Formation Base, Completion Information. Rows 1 and 2.

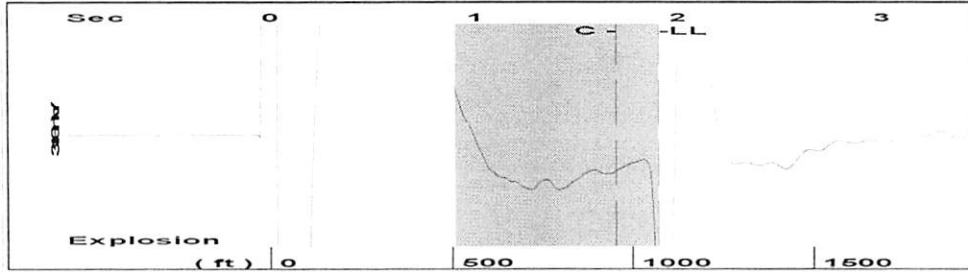
UNDER PENALTY OF PERJURY I HEREBY ATTEST THAT THE INFORMATION CONTAINED HEREIN IS TRUE AND CORRECT TO THE BEST OF MY KNOWLEDGE

Submitted Electronically

Do NOT Write in This Space - KCC USE ONLY
Date Tested: Results: Date Plugged: Date Repaired: Date Put Back in Service:
Review Completed by: Comments:
TA Approved: Yes Denied Date:

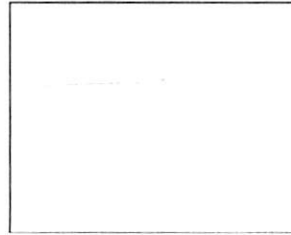
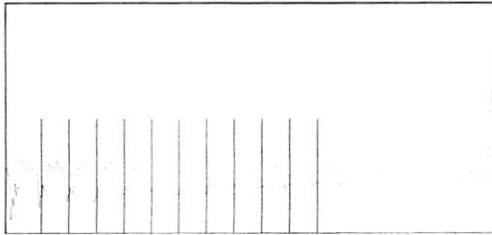
Mail to the Appropriate KCC Conservation Office:

Table with 3 columns: District Office, Address, Phone. Rows for District Office #1, #2, #3, #4.

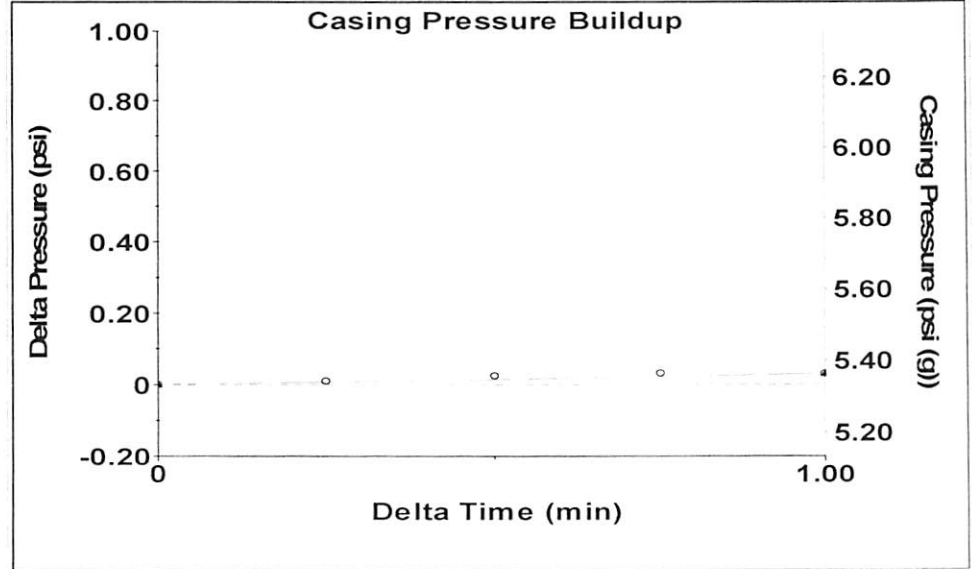


Filter Type High Pass Automatic Collar Count Yes Time 1.905 sec
 Manual Acoustic Velo 1122.12 ft/s Manual JTS/sec 17.6991 Joints 33.8246 Jts
 Depth 1072.24 ft

[0.9 to 1.9 (Sec)]



Analysis Method: Automatic



Change in Pressure 0.03 psi PT15469
 Range 0 - 2 psi
 Change in Time 1.00 min

Production
 Current Potential
 Oil - * - BBL/D
 Water - * - BBL/D
 Gas - * - Mscf/D

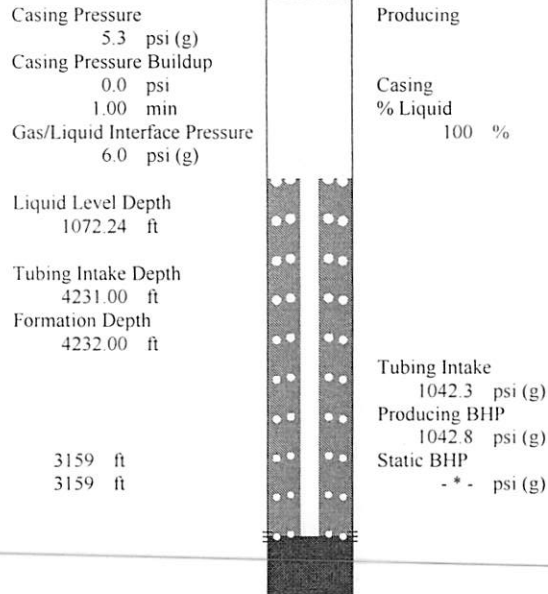
IPR Method Vogel
 PBHP/SBHP - * -
 Production Efficiency 0.0

Oil 40 deg.API
 Water 1.05 Sp.Gr.H2O
 Gas 0.85 Sp.Gr.AIR

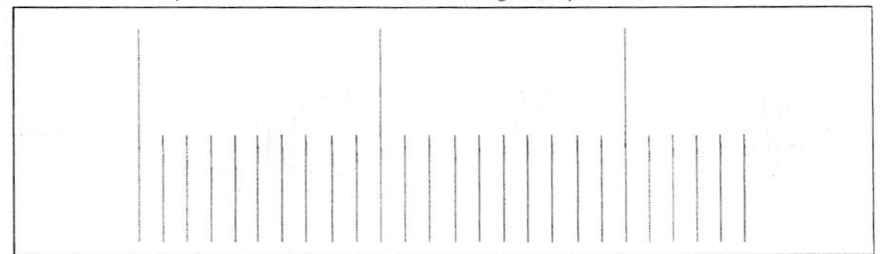
Acoustic Velocity 1125.71 ft/s

Formation Submergence
 Total Gaseous Liquid Column HT (TVD) 3159 ft
 Equivalent Gas Free Liquid HT (TVD) 3159 ft

Acoustic Test



Producing
 Casing Pressure 5.3 psi (g)
 Casing Pressure Buildup 1.00 min
 Gas/Liquid Interface Pressure 6.0 psi (g)
 Liquid Level Depth 1072.24 ft
 Tubing Intake Depth 4231.00 ft
 Formation Depth 4232.00 ft
 Tubing Intake 1042.3 psi (g)
 Producing BHP 1042.8 psi (g)
 Static BHP - * - psi (g)



Acoustic Velocity 1125.71 ft/s Joints counted 25
 Joints Per Second 17.7557 jts/sec Joints to liquid level 33.8246
 Depth to liquid level 1072.24 ft Filter Width 15.6991 19.6991
 Automatic Collar Count Yes Time to 1st Collar 0.288 1.696

Conservation Division
District Office No. 1
210 E. Frontview, Suite A
Dodge City, KS 67801



Phone: 620-682-7933
<http://kcc.ks.gov/>

Dwight D. Keen, Chair
Susan K. Duffy, Commissioner
Andrew J. French, Commissioner

Laura Kelly, Governor

February 10, 2022

Kenneth C Gates
3G Production, LLC
10387 NE SR 61
PO BOX 847
PRATT, KS 67124-0847

Re: Temporary Abandonment
API 15-145-20827-00-00
HENNING 2
SE/4 Sec.25-23S-17W
Pawnee County, Kansas

Dear Kenneth C Gates:

"Your temporary abandonment (TA) application for the well listed above has been approved. In accordance with K.A.R. 82-3-111 the TA status of this well will expire 02/10/2023.

- * If you return this well to service or plug it, please notify the District Office.
- * If you sell this well you are required to file a Transfer of Operator form, T-1.
- * If the well will remain temporarily abandoned, you must submit a new TA application, CP-111, before 02/10/2023.

You may contact me at the number above if you have questions.

Very truly yours,

Michael Maier"