

KANSAS CORPORATION COMMISSION
OIL & GAS CONSERVATION DIVISION

TEMPORARY ABANDONMENT WELL APPLICATION

OPERATOR: License#
Name:
Address 1:
Address 2:
City: State: Zip:
Contact Person:
Phone:
Contact Person Email:
Field Contact Person:
Field Contact Person Phone:

API No. 15-
Spot Description:
Sec. Twp. S. R.
GPS Location: Lat: Long:
Datum: NAD27 NAD83 WGS84
County: Elevation:
Lease Name: Well #:
Well Type: Oil Gas OG WSW Other:
SWD Permit #: ENHR Permit #:
Gas Storage Permit #:
Spud Date: Date Shut-In:

Table with 7 columns: Conductor, Surface, Production, Intermediate, Liner, Tubing. Rows include Size, Setting Depth, Amount of Cement, Top of Cement, Bottom of Cement.

Casing Fluid Level from Surface: How Determined? Date:
Casing Squeeze(s): to w / sacks of cement, to w / sacks of cement. Date:
Do you have a valid Oil & Gas Lease? Yes No
Depth and Type: Junk in Hole at Tools in Hole at Casing Leaks: Yes No Depth of casing leak(s):
Type Completion: ALT. I ALT. II Depth of: DV Tool: w / sacks of cement Port Collar: w / sack of cement
Packer Type: Size: Inch Set at: Feet
Total Depth: Plug Back Depth: Plug Back Method:

Geological Data:

Table with 4 columns: Formation Name, Formation Top, Formation Base, Completion Information. Rows 1 and 2.

UNDER PENALTY OF PERJURY I HEREBY ATTEST THAT THE INFORMATION CONTAINED HEREIN IS TRUE AND CORRECT TO THE BEST OF MY KNOWLEDGE

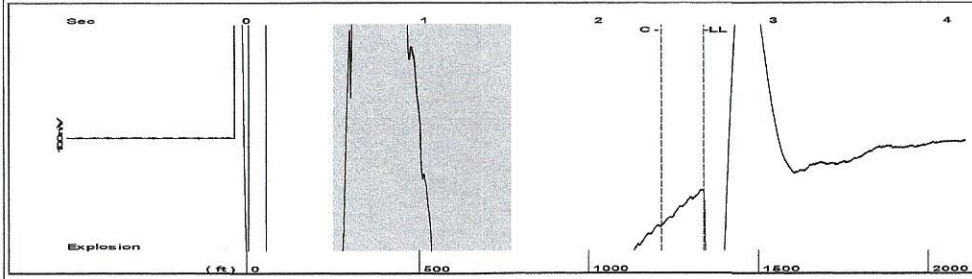
Submitted Electronically

Do NOT Write in This Space - KCC USE ONLY
Date Tested: Results: Date Plugged: Date Repaired: Date Put Back in Service:
Review Completed by: Comments:
TA Approved: Yes Denied Date:

Mail to the Appropriate KCC Conservation Office:

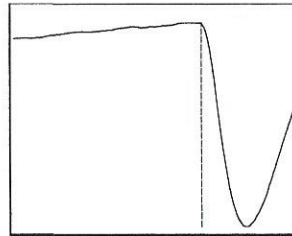
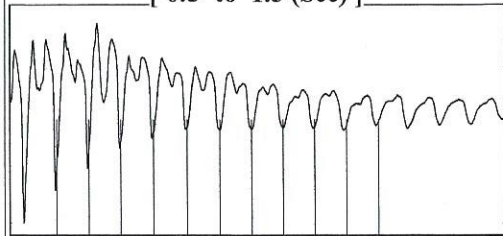
Table with 3 columns: District Office #, Address, Phone. Rows 1-4.

Group: Radium Well: Axman - Demel 1 -24 (acquired on: 02/14/22 12:02:16)



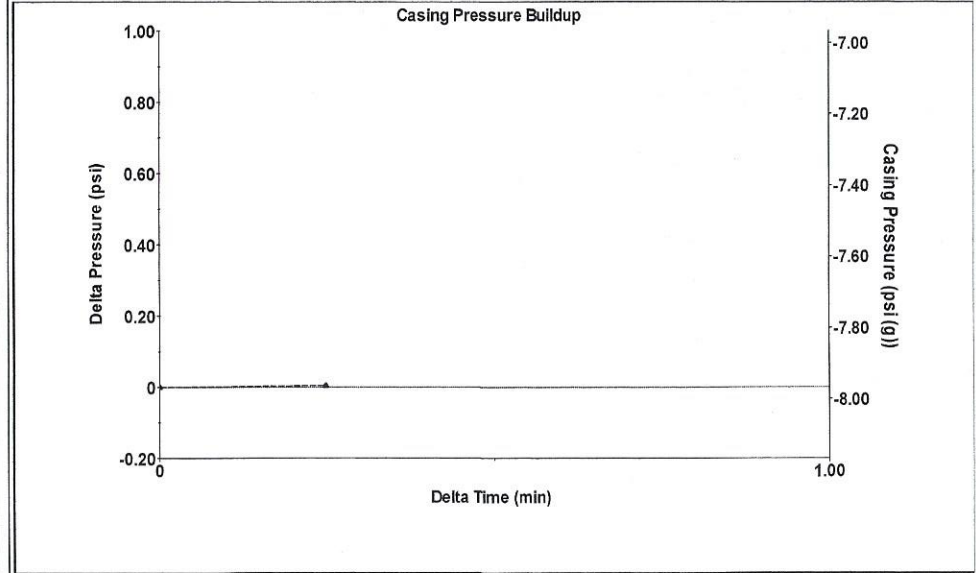
Filter Type High Pass Automatic Collar Count Yes Time 2.602 sec
 Manual Acoustic Velo 1010.46 ft/s Manual JTS/sec 15.3846 Joints 40.7411 Jts
 Depth 1337.94 ft

[0.5 to 1.5 (Sec)]



Analysis Method: Automatic

Group: Radium Well: Axman - Demel 1 -24 (acquired on: 02/14/22 12:02:16)



Change in Pressure 0.00 psi PT13440
 Range 0 - ? psi
 Change in Time 0.25 min

Group: Radium Well: Axman - Demel 1 -24 (acquired on: 02/14/22 12:02:16)

Production
 Current Potential
 Oil - * - * - BBL/D
 Water - * - * - BBL/D
 Gas - * - * - Mscf/D

IPR Method Vogel
 PBHP/SBHP - * -
 Production Efficiency 0.0

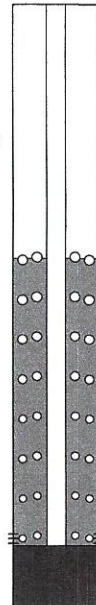
Oil 40 deg.API
 Water 1.05 Sp.Gr.H2O
 Gas 0.95 Sp.Gr.AIR

Acoustic Velocity 1028.39 ft/s

Formation Submergence
 Total Gaseous Liquid Column HT (TVD) 1979 ft
 Equivalent Gas Free Liquid HT (TVD) 1979 ft

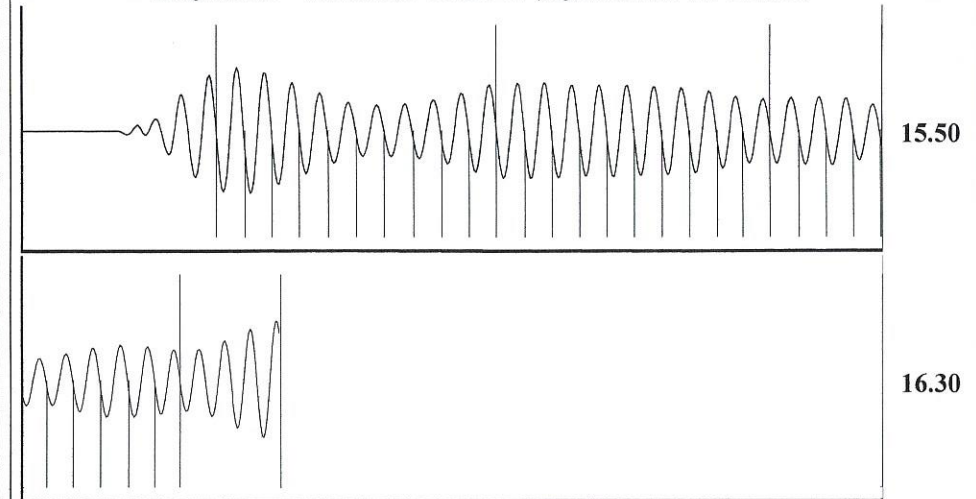
Acoustic Test

Casing Pressure -8.0 psi (g)
 Casing Pressure Buildup 0.0 psi
 0.25 min
 Gas/Liquid Interface Pressure -7.7 psi (g)
 Liquid Level Depth 1337.94 ft
 Pump Intake Depth 3317.00 ft
 Formation Depth 3264.00 ft



Producing
 Annular Gas Flow 0 Mscf/D
 % Liquid 100 %
 Pump Intake 654.9 psi (g)
 Producing BHP 638.0 psi (g)
 Static BHP - * - psi (g)

Group: Radium Well: Axman - Demel 1 -24 (acquired on: 02/14/22 12:02:16)



Acoustic Velocity 1028.39 ft/s Joints counted 30
 Joints Per Second 15.6576 jts/sec Joints to liquid level 40.7411
 Depth to liquid level 1337.94 ft Filter Width 13.3846 17.3846
 Automatic Collar Count Yes Time to 1st Collar 0.448 2.364

Conservation Division
District Office No. 4
2301 E. 13th Street
Hays, KS 67601-2651



Phone: 785-261-6250
Fax: 785-625-0564
<http://kcc.ks.gov/>

Dwight D. Keen, Chair
Susan K. Duffy, Commissioner
Andrew J. French, Commissioner

Laura Kelly, Governor

February 15, 2022

Loveness Mpanje
F. G. Holl Company L.L.C.
9431 E CENTRAL STE 100
WICHITA, KS 67206-2563

Re: Temporary Abandonment
API 15-009-25057-00-00
AXMAN-DEMEL 1-24
W/2 Sec.24-17S-15W
Barton County, Kansas

Dear Loveness Mpanje:

"Your temporary abandonment (TA) application for the well listed above has been approved. In accordance with K.A.R. 82-3-111 the TA status of this well will expire 02/15/2023.

- * If you return this well to service or plug it, please notify the District Office.
- * If you sell this well you are required to file a Transfer of Operator form, T-1.
- * If the well will remain temporarily abandoned, you must submit a new TA application, CP-111, before 02/15/2023.

You may contact me at the number above if you have questions.

Very truly yours,

RICHARD WILLIAMS"