

KANSAS CORPORATION COMMISSION
OIL & GAS CONSERVATION DIVISION

Form must be Typed
Form must be signed

TEMPORARY ABANDONMENT WELL APPLICATION

All blanks must be complete

OPERATOR: License#
Name:
Address 1:
Address 2:
City: State: Zip:
Contact Person:
Phone:
Contact Person Email:
Field Contact Person:
Field Contact Person Phone:

API No. 15-
Spot Description:
Sec. Twp. S. R.
GPS Location: Lat: Long:
Datum: NAD27 NAD83 WGS84
County: Elevation:
Lease Name: Well #:
Well Type: Oil Gas OG WSW Other:
SWD Permit #: ENHR Permit #:
Gas Storage Permit #:
Spud Date: Date Shut-In:

Table with 7 columns: Conductor, Surface, Production, Intermediate, Liner, Tubing. Rows include Size, Setting Depth, Amount of Cement, Top of Cement, Bottom of Cement.

Casing Fluid Level from Surface: How Determined? Date:
Casing Squeeze(s): to w / sacks of cement, to w / sacks of cement. Date:
Do you have a valid Oil & Gas Lease? Yes No
Depth and Type: Junk in Hole at Tools in Hole at Casing Leaks: Yes No Depth of casing leak(s):
Type Completion: ALT. I ALT. II Depth of: DV Tool: w / sacks of cement Port Collar: w / sack of cement
Packer Type: Size: Inch Set at: Feet
Total Depth: Plug Back Depth: Plug Back Method:

Geological Date:

Table with 4 columns: Formation Name, Formation Top, Formation Base, Completion Information. Rows 1 and 2.

UNDER PENALTY OF PERJURY I HEREBY ATTEST THAT THE INFORMATION CONTAINED HEREIN IS TRUE AND CORRECT TO THE BEST OF MY KNOWLEDGE

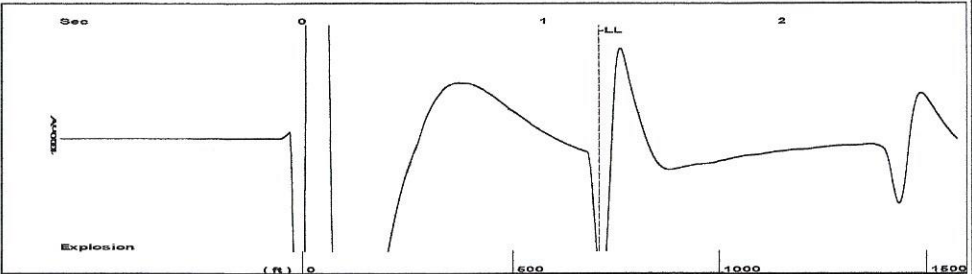
Submitted Electronically

Do NOT Write in This Space - KCC USE ONLY
Date Tested: Results: Date Plugged: Date Repaired: Date Put Back in Service:
Review Completed by: Comments:
TA Approved: Yes Denied Date:

Mail to the Appropriate KCC Conservation Office:

Table with 2 columns: Office Address, Phone. Rows for District Office #1, #2, #3, #4.

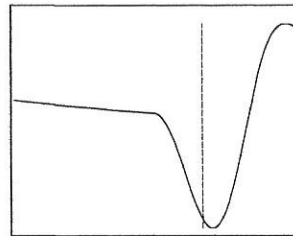
Group: Radium Well: Button A Unit 1-24 (acquired on: 02/14/22 12:52:38 )



Time 1.236 sec  
 Joints 22.4196 Jts  
 Depth 710.70 ft

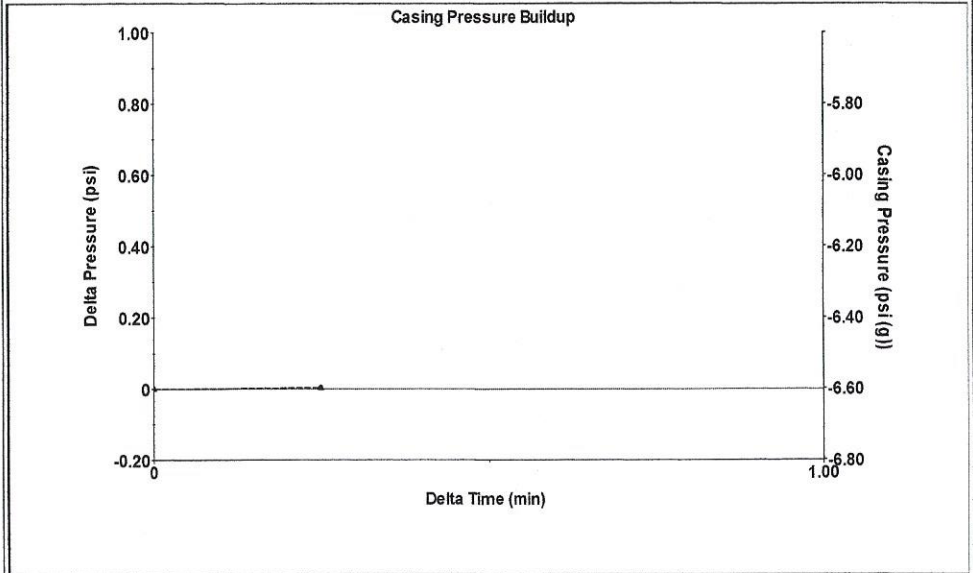
Liquid level calculated with user supplied Acoustic Velocity

Acoustic Velocity 1150 ft/s



**Analysis Method: Acoustic Velocity**

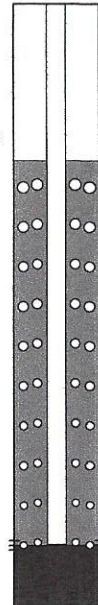
Group: Radium Well: Button A Unit 1-24 (acquired on: 02/14/22 12:52:38 )



Change in Pressure 0.00 psi PT13440  
 Range 0 - ? psi  
 Change in Time 0.25 min

Group: Radium Well: Button A Unit 1-24 (acquired on: 02/14/22 12:52:38 )

Production							
Current	Potential	Casing Pressure		Producing			
Oil - *-	- *- BBL/D	-6.6 psi (g)		Annular			
Water - *-	- *- BBL/D	Casing Pressure Buildup		Gas Flow			
Gas - *-	- *- Mscf/D	0.0 psi		% Liquid			
		0.25 min		100 %			
IPR Method	Vogel	Gas/Liquid Interface Pressure					
PBHP/SBHP	- *-	-6.4 psi (g)					
Production Efficiency	0.0						
		Liquid Level Depth					
Oil 40 deg.API		710.70 ft					
Water 1.05 Sp.Gr.H2O		Pump Intake Depth					
Gas 0.85 Sp.Gr.AIR		3534.00 ft					
Acoustic Velocity	1150 ft/s	Formation Depth					
		3538.00 ft					
Formation Submergence				Pump Intake			
Total Gaseous Liquid Column HT (TVD)	2823 ft			927.5 psi (g)			
Equivalent Gas Free Liquid HT (TVD)	2823 ft			Producing BHP			
				929.3 psi (g)			
Acoustic Test				Static BHP			
				- *- psi (g)			



Group: Radium Well: Button A Unit 1-24 (acquired on: 02/14/22 12:52:38 )

**Entered Acoustic Velocity for Liquid Level depth determination**

Conservation Division  
District Office No. 4  
2301 E. 13th Street  
Hays, KS 67601-2651



Phone: 785-261-6250  
Fax: 785-625-0564  
<http://kcc.ks.gov/>

Dwight D. Keen, Chair  
Susan K. Duffy, Commissioner  
Andrew J. French, Commissioner

Laura Kelly, Governor

February 15, 2022

Loveness Mpanje  
F. G. Holl Company L.L.C.  
9431 E CENTRAL STE 100  
WICHITA, KS 67206-2563

Re: Temporary Abandonment  
API 15-009-25741-00-00  
BUTTON "A" UNIT 1-24  
SW/4 Sec.24-19S-15W  
Barton County, Kansas

Dear Loveness Mpanje:

"Your temporary abandonment (TA) application for the well listed above has been approved. In accordance with K.A.R. 82-3-111 the TA status of this well will expire 02/15/2023.

- \* If you return this well to service or plug it, please notify the District Office.
- \* If you sell this well you are required to file a Transfer of Operator form, T-1.
- \* If the well will remain temporarily abandoned, you must submit a new TA application, CP-111, before 02/15/2023.

You may contact me at the number above if you have questions.

Very truly yours,

RICHARD WILLIAMS"