

KANSAS CORPORATION COMMISSION
OIL & GAS CONSERVATION DIVISION

TEMPORARY ABANDONMENT WELL APPLICATION

OPERATOR: License#
Name:
Address 1:
Address 2:
City: State: Zip:
Contact Person:
Phone:
Contact Person Email:
Field Contact Person:
Field Contact Person Phone:

API No. 15-
Spot Description:
Sec. Twp. S. R.
GPS Location: Lat: Long:
Datum: NAD27 NAD83 WGS84
County: Elevation:
Lease Name: Well #:
Well Type: Oil Gas OG WSW Other:
SWD Permit #: ENHR Permit #:
Gas Storage Permit #:
Spud Date: Date Shut-In:

Table with 7 columns: Conductor, Surface, Production, Intermediate, Liner, Tubing. Rows include Size, Setting Depth, Amount of Cement, Top of Cement, Bottom of Cement.

Casing Fluid Level from Surface: How Determined? Date:
Casing Squeeze(s): to w / sacks of cement, to w / sacks of cement. Date:
Do you have a valid Oil & Gas Lease? Yes No
Depth and Type: Junk in Hole at Tools in Hole at Casing Leaks: Yes No Depth of casing leak(s):
Type Completion: ALT. I ALT. II Depth of: DV Tool: w / sacks of cement Port Collar: w / sack of cement
Packer Type: Size: Inch Set at: Feet
Total Depth: Plug Back Depth: Plug Back Method:

Geological Data:

Table with 4 columns: Formation Name, Formation Top, Formation Base, Completion Information. Rows 1 and 2.

UNDER PENALTY OF PERJURY I HEREBY ATTEST THAT THE INFORMATION CONTAINED HEREIN IS TRUE AND CORRECT TO THE BEST OF MY KNOWLEDGE

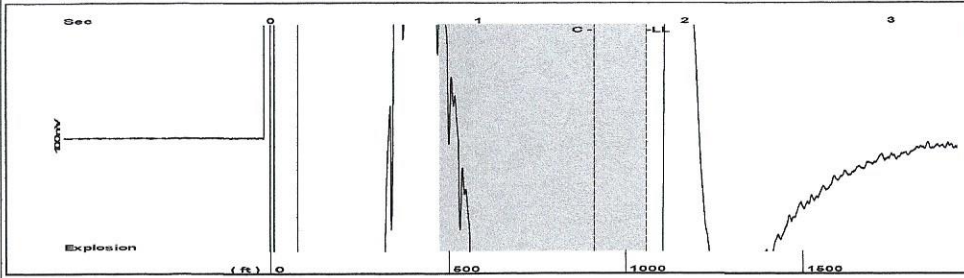
Submitted Electronically

Do NOT Write in This Space - KCC USE ONLY
Date Tested: Results: Date Plugged: Date Repaired: Date Put Back in Service:
Review Completed by: Comments:
TA Approved: Yes Denied Date:

Mail to the Appropriate KCC Conservation Office:

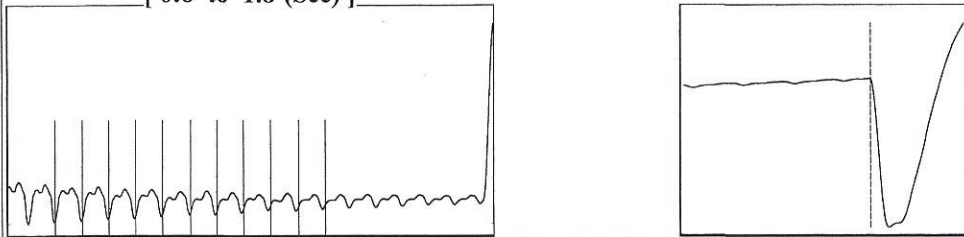
Table with 3 columns: District Office #, Address, Phone. Rows 1-4.

Group: Radium Well: Penner Trust unit 1-15 (acquired on: 02/14/22 13:36:01)



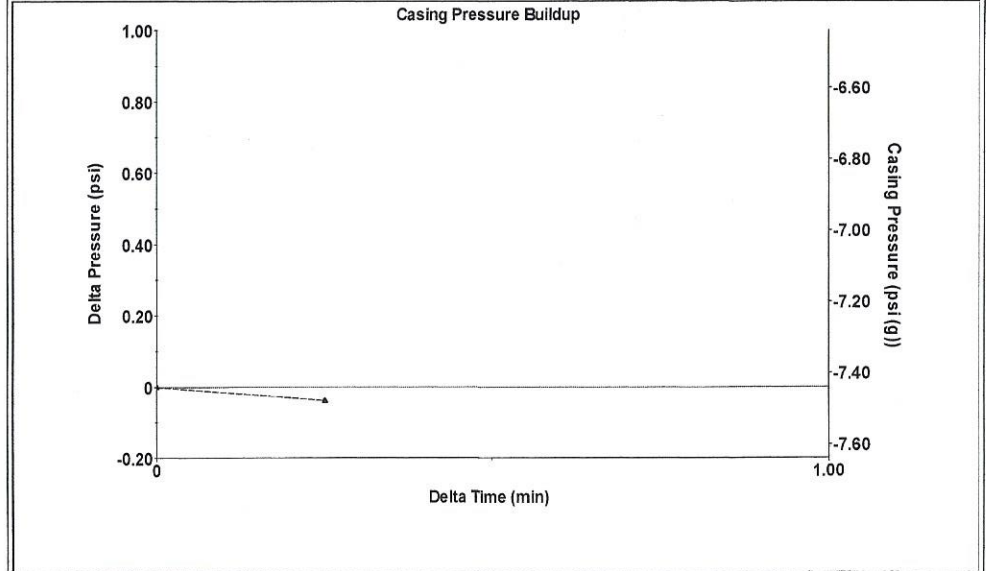
Filter Type High Pass Automatic Collar Count Yes Time 1.814 sec
 Manual Acoustic Velo 1173.33 ft/s Manual JTS/sec 18.018 Joints 32.4938 Jts
 Depth 1058.00 ft

[0.8 to 1.8 (Sec)]



Analysis Method: Automatic

Group: Radium Well: Penner Trust unit 1-15 (acquired on: 02/14/22 13:36:01)



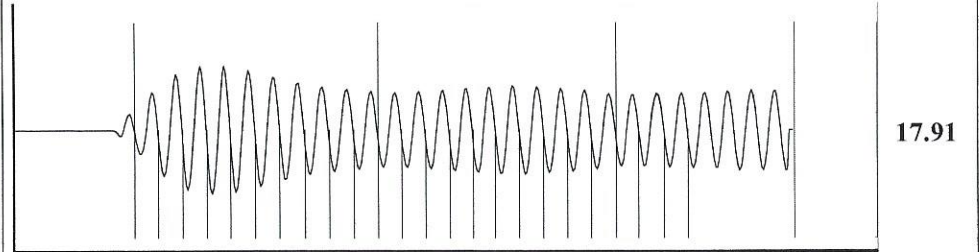
Change in Pressure -0.04 psi PT13440
 Change in Time 0.25 min Range 0 - ? psi

Group: Radium Well: Penner Trust unit 1-15 (acquired on: 02/14/22 13:36:01)

Production							
Current	Potential	Casing Pressure	Producing				
Oil - * -	- * - BBL/D	-7.4 psi (g)					
Water - * -	- * - BBL/D	Casing Pressure Buildup	Annular				
Gas - * -	- * - Mscf/D	-0.0 psi	Gas Flow				
		0.25 min	0 Mscf/D				
IPR Method	Vogel	Gas/Liquid Interface Pressure	% Liquid				
PBHP/SBHP	- * -	-7.2 psi (g)	100 %				
Production Efficiency	0.0						
		Liquid Level Depth					
Oil 40 deg.API		1058.00 ft					
Water 1.05 Sp.Gr.H2O		Pump Intake Depth					
Gas 0.81 Sp.Gr.AIR		3777.00 ft					
Acoustic Velocity 1166.48 ft/s		Formation Depth					
		3758.00 ft					
Formation Submergence		Pump Intake					
Total Gaseous Liquid Column HT (TVD) 2719 ft		893.6 psi (g)					
Equivalent Gas Free Liquid HT (TVD) 2719 ft		Producing BHP					
		887.7 psi (g)					
		Static BHP					
Acoustic Test		- * - psi (g)					



Group: Radium Well: Penner Trust unit 1-15 (acquired on: 02/14/22 13:36:01)



Acoustic Velocity 1166.48 ft/s Joints counted 23
 Joints Per Second 17.9128 jts/sec Joints to liquid level 32.4938
 Depth to liquid level 1058 ft Filter Width 16.018 20.018
 Automatic Collar Count Yes Time to 1st Collar 0.28 1.564

Conservation Division
District Office No. 4
2301 E. 13th Street
Hays, KS 67601-2651



Phone: 785-261-6250
Fax: 785-625-0564
<http://kcc.ks.gov/>

Dwight D. Keen, Chair
Susan K. Duffy, Commissioner
Andrew J. French, Commissioner

Laura Kelly, Governor

February 15, 2022

Loveness Mpanje
F. G. Holl Company L.L.C.
9431 E CENTRAL STE 100
WICHITA, KS 67206-2563

Re: Temporary Abandonment
API 15-009-25729-00-01
PENNER TRUST UNIT 1-15
E/2 Sec.15-20S-15W
Barton County, Kansas

Dear Loveness Mpanje:

"Your temporary abandonment (TA) application for the well listed above has been approved. In accordance with K.A.R. 82-3-111 the TA status of this well will expire 02/15/2023.

- * If you return this well to service or plug it, please notify the District Office.
- * If you sell this well you are required to file a Transfer of Operator form, T-1.
- * If the well will remain temporarily abandoned, you must submit a new TA application, CP-111, before 02/15/2023.

You may contact me at the number above if you have questions.

Very truly yours,

RICHARD WILLIAMS"