

KANSAS CORPORATION COMMISSION
OIL & GAS CONSERVATION DIVISION

TEMPORARY ABANDONMENT WELL APPLICATION

OPERATOR: License# \_\_\_\_\_
Name: \_\_\_\_\_
Address 1: \_\_\_\_\_
Address 2: \_\_\_\_\_
City: \_\_\_\_\_ State: \_\_\_\_\_ Zip: \_\_\_\_\_ + \_\_\_\_\_
Contact Person: \_\_\_\_\_
Phone:( \_\_\_\_\_ ) \_\_\_\_\_
Contact Person Email: \_\_\_\_\_
Field Contact Person: \_\_\_\_\_
Field Contact Person Phone: ( \_\_\_\_\_ ) \_\_\_\_\_

API No. 15- \_\_\_\_\_
Spot Description: \_\_\_\_\_
- - - - - Sec. \_\_\_\_\_ Twp. \_\_\_\_\_ S. R. \_\_\_\_\_  E  W
\_\_\_\_\_ feet from  N /  S Line of Section
\_\_\_\_\_ feet from  E /  W Line of Section
GPS Location: Lat: \_\_\_\_\_, Long: \_\_\_\_\_
Datum:  NAD27  NAD83  WGS84
County: \_\_\_\_\_ Elevation: \_\_\_\_\_  GL  KB
Lease Name: \_\_\_\_\_ Well #: \_\_\_\_\_
Well Type: (check one)  Oil  Gas  OG  WSW  Other: \_\_\_\_\_
 SWD Permit #: \_\_\_\_\_  ENHR Permit #: \_\_\_\_\_
 Gas Storage Permit #: \_\_\_\_\_
Spud Date: \_\_\_\_\_ Date Shut-In: \_\_\_\_\_

Table with 7 columns: Conductor, Surface, Production, Intermediate, Liner, Tubing. Rows include Size, Setting Depth, Amount of Cement, Top of Cement, Bottom of Cement.

Casing Fluid Level from Surface: \_\_\_\_\_ How Determined? \_\_\_\_\_ Date: \_\_\_\_\_
Casing Squeeze(s): \_\_\_\_\_ to \_\_\_\_\_ w / \_\_\_\_\_ sacks of cement, \_\_\_\_\_ to \_\_\_\_\_ w / \_\_\_\_\_ sacks of cement. Date: \_\_\_\_\_
Do you have a valid Oil & Gas Lease?  Yes  No
Depth and Type:  Junk in Hole at \_\_\_\_\_ (depth)  Tools in Hole at \_\_\_\_\_ (depth) Casing Leaks:  Yes  No Depth of casing leak(s): \_\_\_\_\_
Type Completion:  ALT. I  ALT. II Depth of:  DV Tool: \_\_\_\_\_ w / \_\_\_\_\_ sacks of cement  Port Collar: \_\_\_\_\_ w / \_\_\_\_\_ sack of cement
Packer Type: \_\_\_\_\_ Size: \_\_\_\_\_ Inch Set at: \_\_\_\_\_ Feet
Total Depth: \_\_\_\_\_ Plug Back Depth: \_\_\_\_\_ Plug Back Method: \_\_\_\_\_

Geological Date:

Table with 4 columns: Formation Name, Formation Top, Formation Base, Completion Information. Rows 1 and 2 for geological data entry.

UNDER PENALTY OF PERJURY I HEREBY ATTEST THAT THE INFORMATION CONTAINED HEREIN IS TRUE AND CORRECT TO THE BEST OF MY KNOWLEDGE

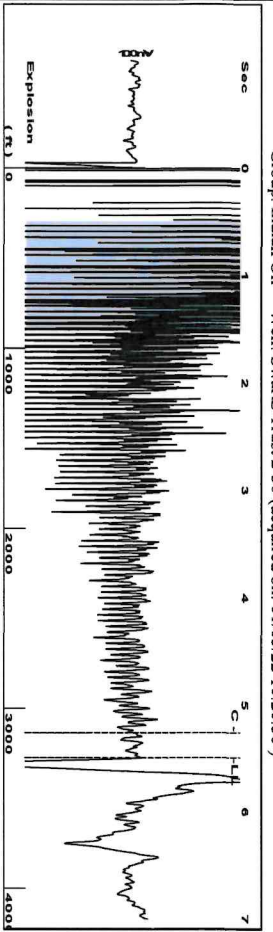
Submitted Electronically

Do NOT Write in This Space - KCC USE ONLY
Date Tested: \_\_\_\_\_ Results: \_\_\_\_\_ Date Plugged: \_\_\_\_\_ Date Repaired: \_\_\_\_\_ Date Put Back in Service: \_\_\_\_\_
Review Completed by: \_\_\_\_\_ Comments: \_\_\_\_\_
TA Approved:  Yes  Denied Date: \_\_\_\_\_

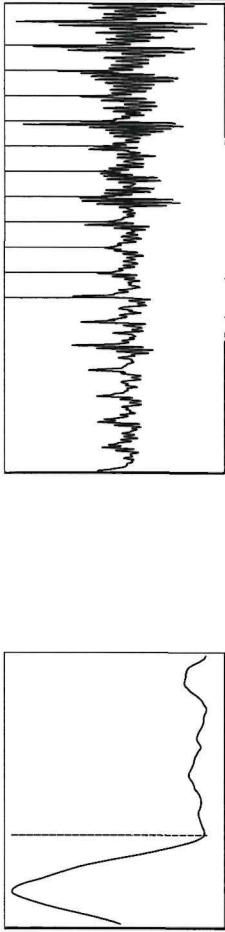
Mail to the Appropriate KCC Conservation Office:

Table with 3 columns: District Office, Address, Phone. Rows for District Office #1 (Dodge City), #2 (Wichita), #3 (Chanute), and #4 (Hays).

Group: Indian Oil Well: Swartz-Trust 2-30 (acquired on: 01/05/22 10:20:36)



Filter Type High Pass Automatic Collar Count Yes  
 Manual Acoustic Veloc 1175.93 ft/s Manual JTS/sec 18.5185  
 Time 5.494 sec  
 Joints 103.122  
 Depth 3274.13 ft



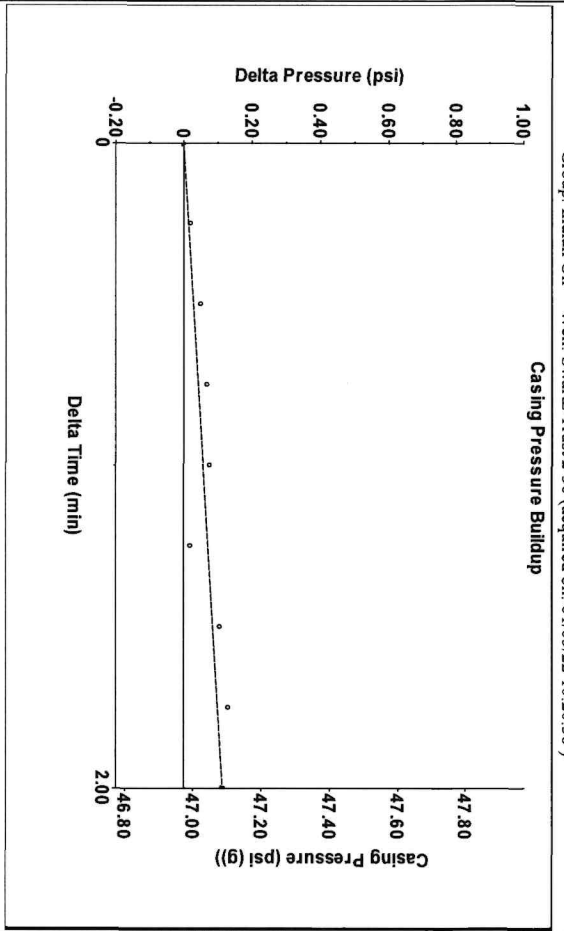
Analysis Method: Automatic

Group: Indian Oil Well: Swartz-Trust 2-30 (acquired on: 01/05/22 10:20:36)

Production Current	Potential	Casing Pressure	Producing
Oil 0.25	-* - BBL/D	47.0 psi (g)	Pump Intake 371.1 psi (g)
Water -* -	-* - BBL/D	Casing Pressure Buildup 0.1 psi	Producing BHP 358.6 psi (g)
Gas 25.0	-* - Mscf/D	2.00 min	Static BHP -* - psi (g)
IPR Method PBHP/SBHP	Vogel -* -	Gas/Liquid Interface Pressure 52.7 psi (g)	% Liquid 92 %
Production Efficiency 0.0		Liquid Level Depth 3274.13 ft	
Oil 40 deg API		Pump Intake Depth 4296.00 ft	
Water 1.05 Sp.Gr.H2O		Formation Depth 4258.00 ft	
Gas 0.80 Sp.Gr.AIR			
Acoustic Velocity 1191.89 ft/s			
Formation Submergence			
Total Gaseous Liquid Column HT (TVD) 1022 ft			
Equivalent Gas Free Liquid HT (TVD) 947 ft			

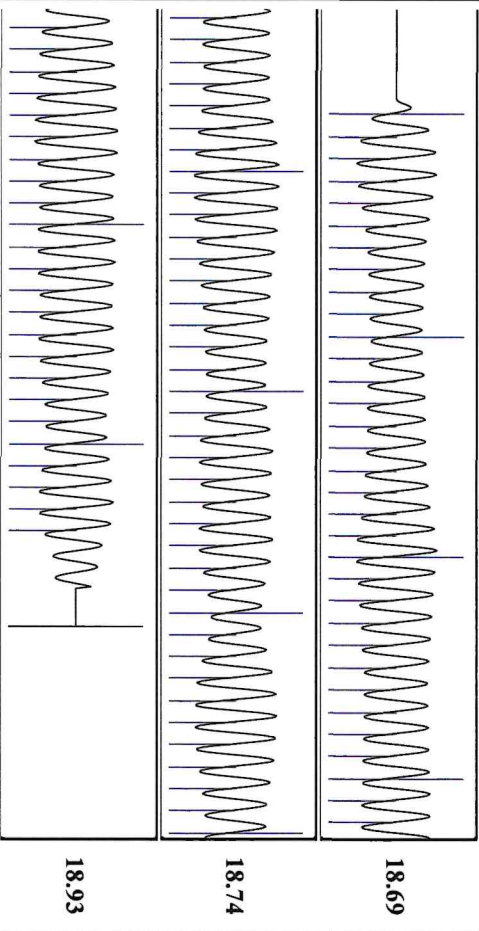


Group: Indian Oil Well: Swartz-Trust 2-30 (acquired on: 01/05/22 10:20:36)



Change in Pressure 0.11 psi PT 15565  
 Change in Time 2.00 min Range 0 - ? psi

Group: Indian Oil Well: Swartz-Trust 2-30 (acquired on: 01/05/22 10:20:36)



Acoustic Velocity 1191.89 ft/s Joints counted 94  
 Joints Per Second 18.77 ft/sec Joints to liquid level 103.122  
 Depth to liquid level 3274.13 ft Filter Width 16.5185  
 Automatic Collar Count Yes Time to 1st Collar 0.252

Conservation Division  
District Office No. 1  
210 E. Frontview, Suite A  
Dodge City, KS 67801



Phone: 620-682-7933  
<http://kcc.ks.gov/>

Dwight D. Keen, Chair  
Susan K. Duffy, Commissioner  
Andrew J. French, Commissioner

Laura Kelly, Governor

February 17, 2022

Anthony Farrar  
Indian Oil Co., Inc.  
308 S. Main St.  
PO BOX 209  
MEDICINE LODGE, KS 67104-0209

Re: Temporary Abandonment  
API 15-007-24261-00-00  
SWARTZ TRUST 2-30  
SE/4 Sec.30-31S-11W  
Barber County, Kansas

Dear Anthony Farrar:

"Your temporary abandonment (TA) application for the well listed above has been approved. In accordance with K.A.R. 82-3-111 the TA status of this well will expire 02/17/2023.

- \* If you return this well to service or plug it, please notify the District Office.
- \* If you sell this well you are required to file a Transfer of Operator form, T-1.
- \* If the well will remain temporarily abandoned, you must submit a new TA application, CP-111, before 02/17/2023.

You may contact me at the number above if you have questions.

Very truly yours,

Michael Maier"