

KANSAS CORPORATION COMMISSION
OIL & GAS CONSERVATION DIVISION

TEMPORARY ABANDONMENT WELL APPLICATION

OPERATOR: License# _____
 Name: _____
 Address 1: _____
 Address 2: _____
 City: _____ State: _____ Zip: _____ + _____
 Contact Person: _____
 Phone:(_____) _____
 Contact Person Email: _____
 Field Contact Person: _____
 Field Contact Person Phone: (_____) _____

API No. 15- _____
 Spot Description: _____
 _____ - _____ - _____ - _____ Sec. _____ Twp. _____ S. R. _____ E W
 _____ feet from N / S Line of Section
 _____ feet from E / W Line of Section
 GPS Location: Lat: _____, Long: _____
(e.g. xx.xxxxx) (e.g. -xxx.xxxxx)
 Datum: NAD27 NAD83 WGS84
 County: _____ Elevation: _____ GL KB
 Lease Name: _____ Well #: _____
 Well Type: (check one) Oil Gas OG WSW Other: _____
 SWD Permit #: _____ ENHR Permit #: _____
 Gas Storage Permit #: _____
 Spud Date: _____ Date Shut-In: _____

| | Conductor | Surface | Production | Intermediate | Liner | Tubing |
|------------------|-----------|---------|------------|--------------|-------|--------|
| Size | | | | | | |
| Setting Depth | | | | | | |
| Amount of Cement | | | | | | |
| Top of Cement | | | | | | |
| Bottom of Cement | | | | | | |

Casing Fluid Level from Surface: _____ How Determined? _____ Date: _____
 Casing Squeeze(s): _____ to _____ w / _____ sacks of cement, _____ to _____ w / _____ sacks of cement. Date: _____
(top) (bottom) (top) (bottom)
 Do you have a valid Oil & Gas Lease? Yes No
 Depth and Type: Junk in Hole at _____ Tools in Hole at _____ Casing Leaks: Yes No Depth of casing leak(s): _____
(depth) (depth)
 Type Completion: ALT. I ALT. II Depth of: DV Tool: _____ w / _____ sacks of cement Port Collar: _____ w / _____ sack of cement
(depth) (depth)
 Packer Type: _____ Size: _____ Inch Set at: _____ Feet
 Total Depth: _____ Plug Back Depth: _____ Plug Back Method: _____

Geological Data:

| Formation Name | Formation Top | Formation Base | Completion Information |
|----------------|---------------|----------------|--|
| 1. _____ | At: _____ | to _____ Feet | Perforation Interval _____ to _____ Feet or Open Hole Interval _____ to _____ Feet |
| 2. _____ | At: _____ | to _____ Feet | Perforation Interval _____ to _____ Feet or Open Hole Interval _____ to _____ Feet |

UNDER PENALTY OF PERJURY I HEREBY ATTEST THAT THE INFORMATION CONTAINED HEREIN IS TRUE AND CORRECT TO THE BEST OF MY KNOWLEDGE

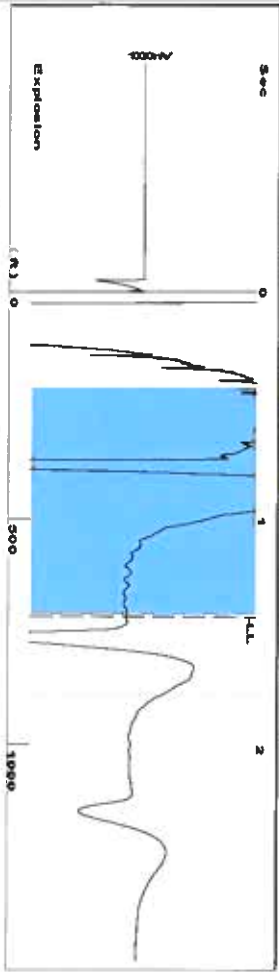
Submitted Electronically

| | | | | | |
|---|--|----------------|---------------------|----------------------|---------------------------------|
| Do NOT Write in This Space - KCC USE ONLY | Date Tested: _____ | Results: _____ | Date Plugged: _____ | Date Repaired: _____ | Date Put Back in Service: _____ |
| | Review Completed by: _____ Comments: _____ | | | | |
| TA Approved: <input type="checkbox"/> Yes <input type="checkbox"/> Denied Date: _____ | | | | | |

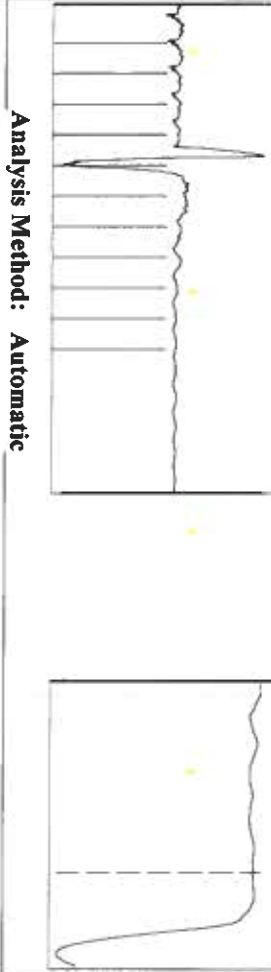
Mail to the Appropriate KCC Conservation Office:

| | | |
|--|--|--------------------|
|  | KCC District Office #1 - 210 E. Frontview, Suite A, Dodge City, KS 67801 | Phone 620.682.7933 |
| | KCC District Office #2 - 3450 N. Rock Road, Building 600, Suite 601, Wichita, KS 67226 | Phone 316.337.7400 |
| | KCC District Office #3 - 137 E. 21st St., Chanute, KS 66720 | Phone 620.902.6450 |
| | KCC District Office #4 - 2301 E. 13th Street, Hays, KS 67601-2651 | Phone 785.261.6250 |

Group: TAD Well: miller x-2 (acquired on: 02/21/22 09:55:38)



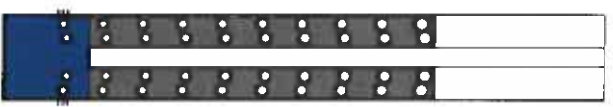
Filter Type: High Pass
 Manual Acoustic Veloc: 1009.55 ft/s
 Automatic Collar Count: Yes
 Manual JTS/sec: 15.9236
 Time: 1.422 sec
 Joints: 22.6433 JIS
 Depth: 717.79 ft



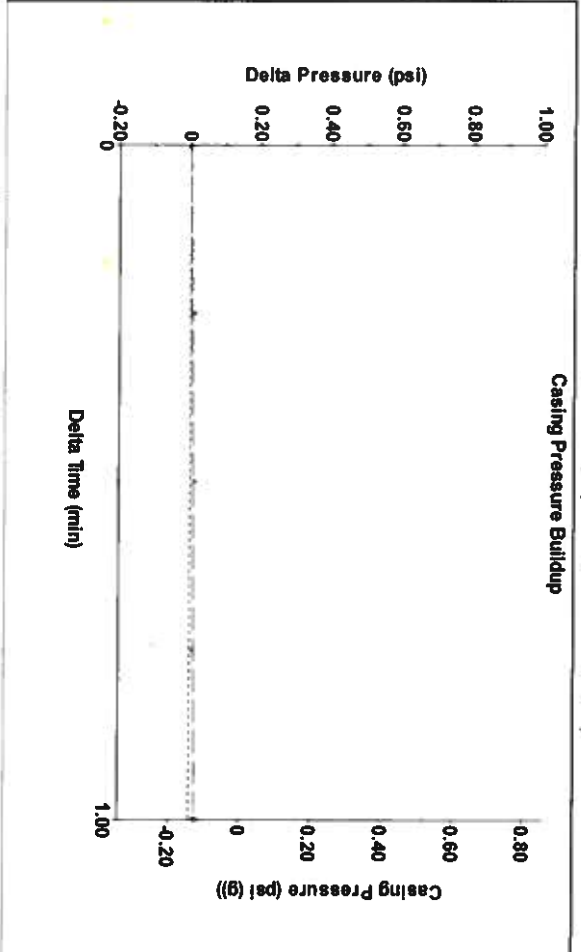
Analysis Method: Automatic

Group: TAD Well: miller x-2 (acquired on: 02/21/22 09:55:38)

| | | | |
|--|----------------------------------|--|--|
| Production | Potential | Casing Pressure | Producing |
| Current: Oil -*, Water -*, Gas -* | BBL/D: -*, BBL/D: -*, Misc/D: -* | -0.1 psi (g) Casing Pressure Buildup: 0.016 psi 1.00 min Gas/Liquid Interface Pressure: 0.2 psi (g) | Annular Gas Flow: 0 Mscf/D % Liquid: 100 % |
| IPR Method: PBHP/SBHP Production Efficiency: 0.0 | Vogel: -*, -* | Liquid Level Depth: 717.79 ft Pump Intake Depth: 2942.00 ft Formation Depth: 3112.00 ft | Liquid Stream Below Tubing: Oil 0 %, Water 100 % Liqud Below Tubing: 100 % |
| Oil: 40 deg API Water: 1.05 Sp.Gr./H2O Gas: 0.96 Sp.Gr./AIR | | Acoustic Velocity: 1009.55 ft/s | Pump Intake: 742.6 psi (g) Producing BHP: 819.9 psi (g) Static BHP: -*, -* psi (g) |
| Formation Submergence: Total Gaseous Liquid Column HT (TVD): 2224 ft Equivalent Gas Free Liquid HT (TVD): 2224 ft | | | |
| Acoustic Test | | | |

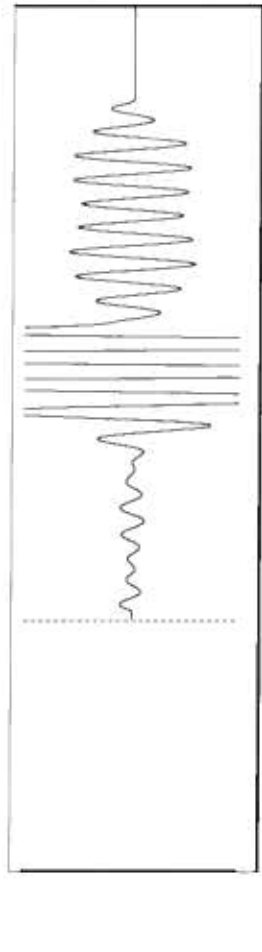


Group: TAD Well: miller x-2 (acquired on: 02/21/22 09:55:38)



Change in Pressure: 0.02 psi
 Change in Time: 1.00 min
 PT: 18865
 Range: 0 - 7 psi

Group: TAD Well: miller x-2 (acquired on: 02/21/22 09:55:38)



| | |
|--------------------------------|--------------------------------|
| Acoustic Velocity: -*, -* ft/s | Joints counted: 0 |
| Joints Per Second: -*, -* ft | Joints to liquid level: -*, -* |
| Depth to liquid level: ft | Filter Width: 13.9236 |
| Automatic Collar Count: Yes | Time to 1st Collar: -*, -* |

Conservation Division
District Office No. 1
210 E. Frontview, Suite A
Dodge City, KS 67801



Phone: 620-682-7933
<http://kcc.ks.gov/>

Dwight D. Keen, Chair
Susan K. Duffy, Commissioner
Andrew J. French, Commissioner

Laura Kelly, Governor

February 24, 2022

Katherine McClurkan
Merit Energy Company, LLC
13727 Noel Raod, Suite 1200
Dallas, TX 75240

Re: Temporary Abandonment
API 15-067-30004-00-00
Miller X 2
NW/4 Sec.22-27S-36W
Grant County, Kansas

Dear Katherine McClurkan:

"Your temporary abandonment (TA) application for the well listed above has been approved. In accordance with K.A.R. 82-3-111 the TA status of this well will expire 04/03/2022.

- * If you return this well to service or plug it, please notify the District Office.
- * If you sell this well you are required to file a Transfer of Operator form, T-1.
- * If the well will remain temporarily abandoned, you must submit a new TA application, CP-111, before 04/03/2022.

You may contact me at the number above if you have questions.

Very truly yours,

Michael Maier"