

Form	ACO1 - Well Completion
Operator	Griffin, Charles N.
Well Name	MARLEE 1
Doc ID	1485861

All Electric Logs Run

Dual Induction Log
Micro Log
Sonic Log
Compensated Density-Neutron Log

Form	ACO1 - Well Completion
Operator	Griffin, Charles N.
Well Name	MARLEE 1
Doc ID	1485861

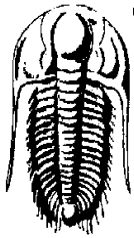
Tops

Name	Top	Datum
Heebner	3820	-1931
Brown Lime	3997	-2108
Lansing	4014	-2125
Stark	4328	-2439
BKC	4416	-2527
Pawnee	4479	-2590
Cherokee	4518	-2629
Viola	4603	-2714
Simpson	4744	-2855

Form	ACO1 - Well Completion
Operator	Griffin, Charles N.
Well Name	MARLEE 1
Doc ID	1485861

Casing

Purpose Of String	Size Hole Drilled	Size Casing Set	Weight	Setting Depth	Type Of Cement	Number of Sacks Used	Type and Percent Additives
Surface	12.25	8.625	23	270	Common	260	2% Gel, 3% CC 1/# PS
Production	7.875	4.5	10.5	4316	Common	200	2% Gel, 10% salt, 5#Koseal 6%CI5A



TRILOBITE
TESTING, INC.

DRILL STEM TEST REPORT

Griffin, Charles N. (Griffin MNGT)

17-30s-15w Barber Co. , Ks.

P.O. Box 347
Pratt, Ks. 67124

Marlee #1

Job Ticket: 65460

DST#: 1

ATTN: Bruce Reed/ Eli Felt

Test Start: 2019.12.08 @ 16:36:33

GENERAL INFORMATION:

Formation: **Marm. - Ft. Scott**

Deviated: No Whipstock: ft (KB)

Time Tool Opened: 19:19:48

Time Test Ended: 00:55:33

Test Type: Conventional Bottom Hole (Initial)

Tester: Matt Smith

Unit No: 68

Interval: 4395.00 ft (KB) To 4500.00 ft (KB) (TVD)

Reference Elevations: 1889.00 ft (KB)

Total Depth: 4500.00 ft (KB) (TVD)

1877.00 ft (CF)

Hole Diameter: 7.88 inches Hole Condition: Fair

KB to GR/CF: 12.00 ft

Serial #: 8931 Inside

Press@RunDepth: 36.65 psig @ 4396.00 ft (KB)

Capacity: 8000.00 psig

Start Date: 2019.12.08

End Date:

2019.12.09

Last Calib.: 2019.12.09

Start Time: 16:36:38

End Time:

00:55:32

Time On Btm: 2019.12.08 @ 19:16:33

Time Off Btm: 2019.12.08 @ 22:34:33

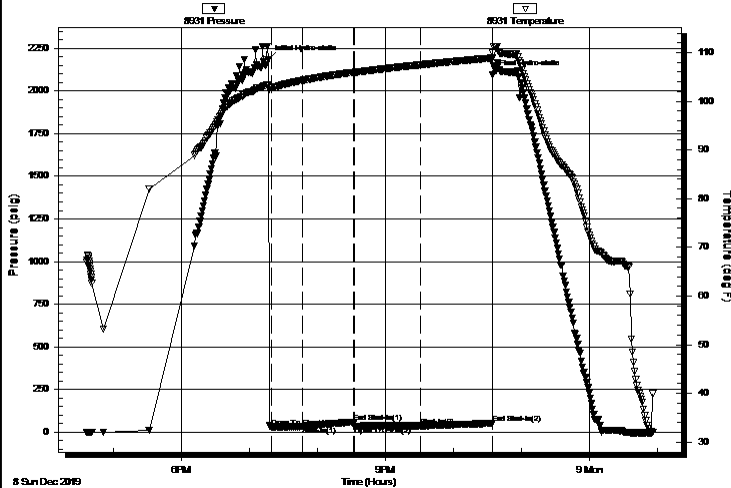
TEST COMMENT: IF: Weak Blow . Built to 3.47".

ISI: No Blow .

FF: Weak Blow . Built to 1".

FSI: No Blow .

Pressure vs. Time



PRESSURE SUMMARY

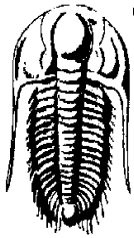
Time (Min.)	Pressure (psig)	Temp (deg F)	Annotation
0	2184.90	103.33	Initial Hydro-static
4	28.63	102.84	Open To Flow (1)
31	31.55	104.27	Shut-In(1)
76	58.81	105.94	End Shut-In(1)
76	32.00	105.94	Open To Flow (2)
134	36.65	107.48	Shut-In(2)
198	51.21	108.86	End Shut-In(2)
198	2095.69	109.86	Final Hydro-static

Recovery

Length (ft)	Description	Volume (bbl)
15.00	O spec M 100%m	0.11

Gas Rates

	Choke (inches)	Pressure (psig)	Gas Rate (Mcf/d)
--	----------------	-----------------	------------------



TRILOBITE
TESTING, INC.

DRILL STEM TEST REPORT

Griffin, Charles N. (Griffin MNGT)

17-30s-15w Barber Co. , Ks.

P.O. Box 347
Pratt, Ks. 67124

Marlee #1

Job Ticket: 65460

DST#: 1

ATTN: Bruce Reed/ Eli Felt

Test Start: 2019.12.08 @ 16:36:33

GENERAL INFORMATION:

Formation: **Marm. - Ft. Scott**

Deviated: No Whipstock: ft (KB)

Time Tool Opened: 19:19:48

Time Test Ended: 00:55:33

Test Type: Conventional Bottom Hole (Initial)

Tester: Matt Smith

Unit No: 68

Interval: 4395.00 ft (KB) To 4500.00 ft (KB) (TVD)

Reference Elevations: 1889.00 ft (KB)

Total Depth: 4500.00 ft (KB) (TVD)

1877.00 ft (CF)

Hole Diameter: 7.88 inches Hole Condition: Fair

KB to GR/CF: 12.00 ft

Serial #: 8788 Outside

Press@RunDepth: psig @ 4396.00 ft (KB)

Capacity: 8000.00 psig

Start Date: 2019.12.08

End Date:

2019.12.09

Last Calib.:

2019.12.09

Start Time: 16:36:55

End Time:

00:55:49

Time On Btm:

Time Off Btm:

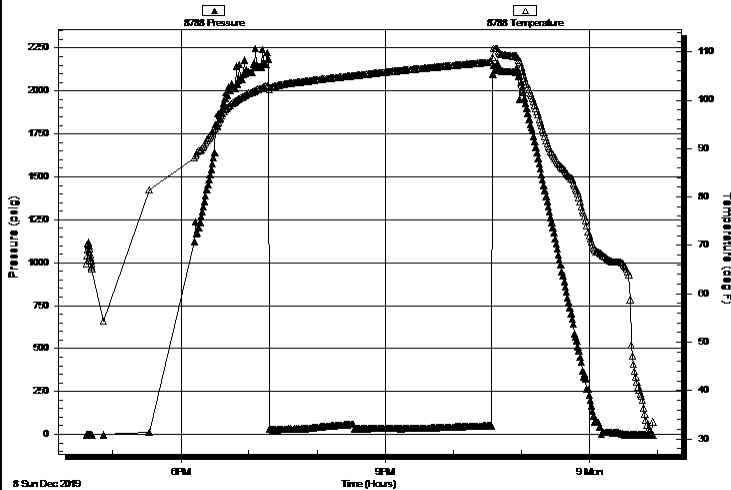
TEST COMMENT: IF: Weak Blow . Built to 3.47".

IS: No Blow .

FF: Weak Blow . Built to 1".

FS: No Blow .

Pressure vs. Time



PRESSURE SUMMARY

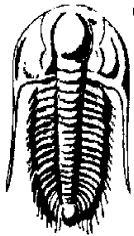
Time (Min.)	Pressure (psig)	Temp (deg F)	Annotation
-------------	-----------------	--------------	------------

Recovery

Length (ft)	Description	Volume (bbl)
15.00	O spec M 100%m	0.11

Gas Rates

	Choke (inches)	Pressure (psig)	Gas Rate (Mcf/d)
--	----------------	-----------------	------------------



TRILOBITE
TESTING, INC.

DRILL STEM TEST REPORT

FLUID SUMMARY

Griffin, Charles N. (Griffin MNGT)

17-30s-15w Barber Co. , Ks.

P.O. Box 347
Pratt, Ks. 67124

Marlee #1

Job Ticket: 65460

DST#: 1

ATTN: Bruce Reed/ Eli Felt

Test Start: 2019.12.08 @ 16:36:33

Mud and Cushion Information

Mud Type: Gel Chem

Mud Weight: 9.00 lb/gal

Viscosity: 52.00 sec/qt

Water Loss: 8.79 in³

Resistivity: 6000.00 ohm.m

Salinity: ppm

Filter Cake: 0.20 inches

Cushion Type:

Cushion Length:

Cushion Volume:

Gas Cushion Type:

Gas Cushion Pressure:

Oil API: deg API

Water Salinity: 6000 ppm

ft
bbl

psig

Recovery Information

Recovery Table

Length ft	Description	Volume bbl
15.00	O spec M 100%m	0.114

Total Length: 15.00 ft Total Volume: 0.114 bbl

Num Fluid Samples: 0

Num Gas Bombs: 0

Serial #: None

Laboratory Name:

Laboratory Location:

Recovery Comments:

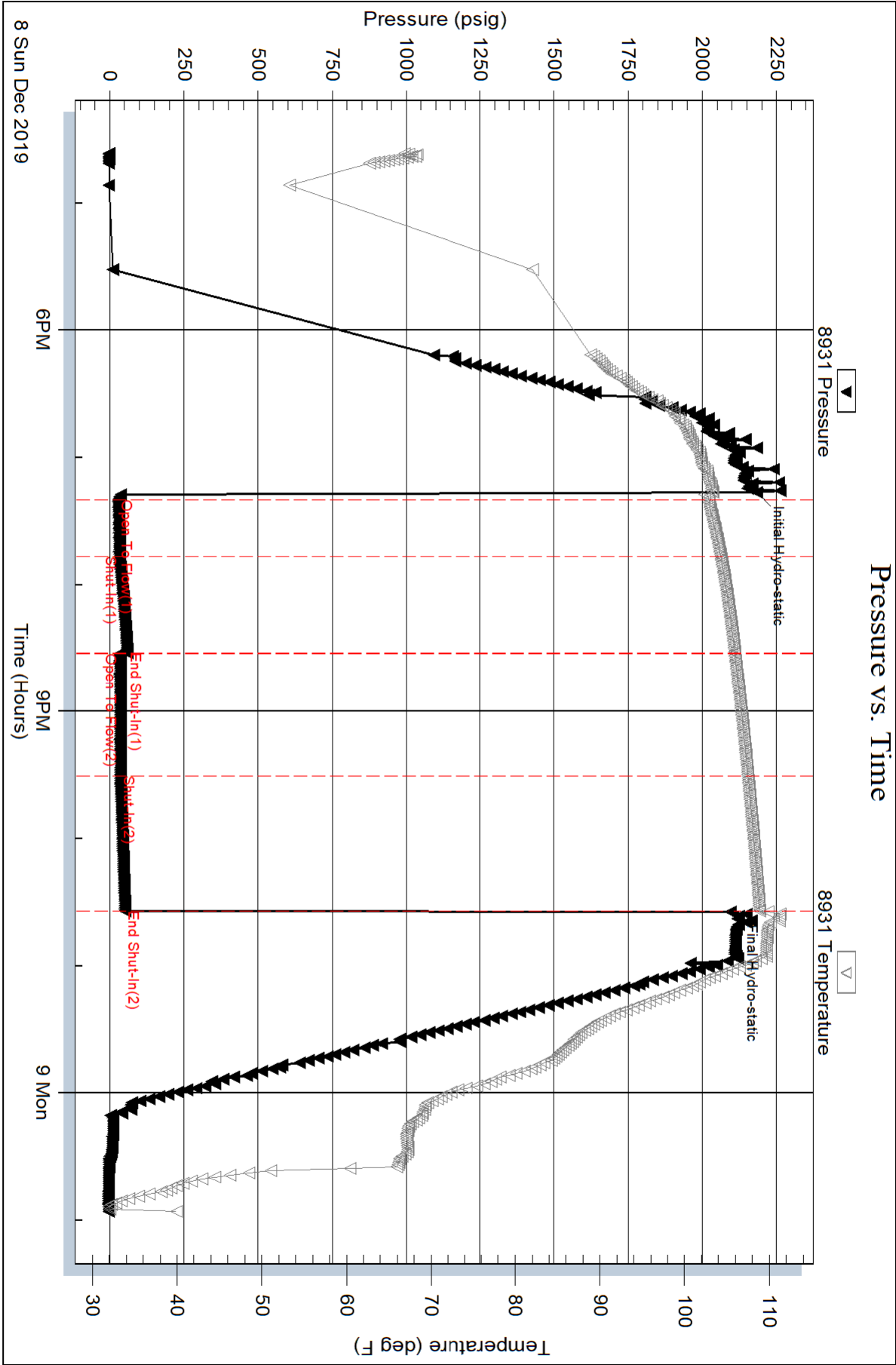
Serial #: 8931

Inside

Griffin, Charles N. (Griffin MNGT)

Marlee #1

DST Test Number: 1

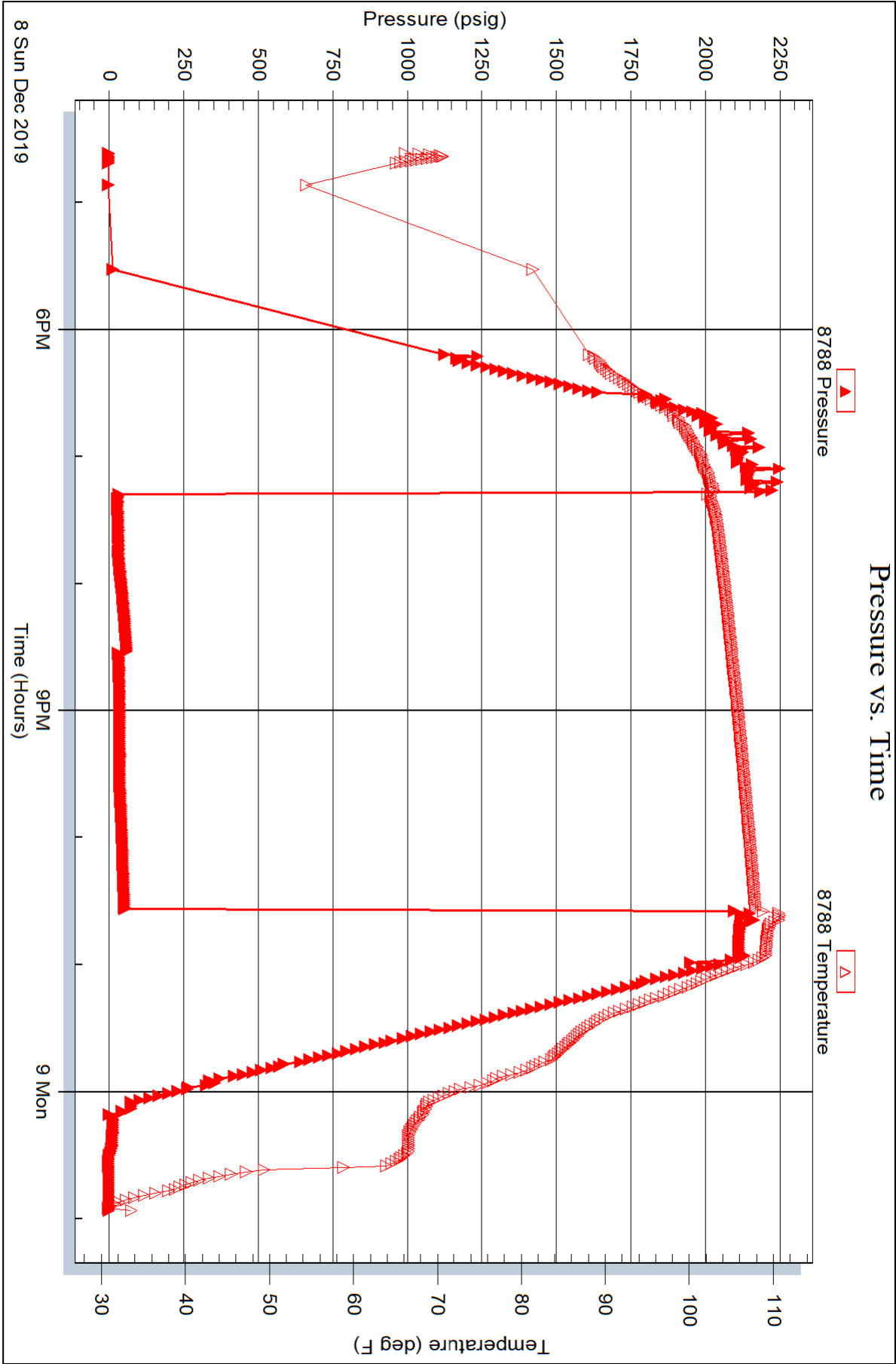


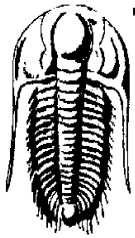
Serial #: 8788

Outside Griffin, Charles N. (Griffin MNGT)

Marlee #1

DST Test Number: 1





TRILOBITE
TESTING, INC.

DRILL STEM TEST REPORT

Griffin, Charles N. (Griffin MNGT)

17-30s-15w Barber Co. , Ks.

P.O. Box 347
Pratt, Ks. 67124

Marlee #1

Job Ticket: 65461

DST#: 2

ATTN: Bruce Reed/ Eli Felt

Test Start: 2019.12.09 @ 20:08:13

GENERAL INFORMATION:

Formation: **Viola**

Deviated: No Whipstock: ft (KB)

Time Tool Opened: 23:21:43

Time Test Ended: 04:44:13

Test Type: Conventional Bottom Hole (Reset)

Tester: Matt Smith

Unit No: 68

Interval: 4610.00 ft (KB) To 4680.00 ft (KB) (TVD)

Reference Elevations: 1889.00 ft (KB)

Total Depth: 4680.00 ft (KB) (TVD)

1877.00 ft (CF)

Hole Diameter: 7.88 inches Hole Condition: Fair

KB to GR/CF: 12.00 ft

Serial #: 8931 Inside

Press@RunDepth: 95.02 psig @ 4611.00 ft (KB)

Capacity: 8000.00 psig

Start Date: 2019.12.09

End Date:

2019.12.10

Last Calib.: 2019.12.10

Start Time: 20:08:18

End Time:

04:44:13

Time On Btm: 2019.12.09 @ 23:18:43

Time Off Btm: 2019.12.10 @ 02:14:43

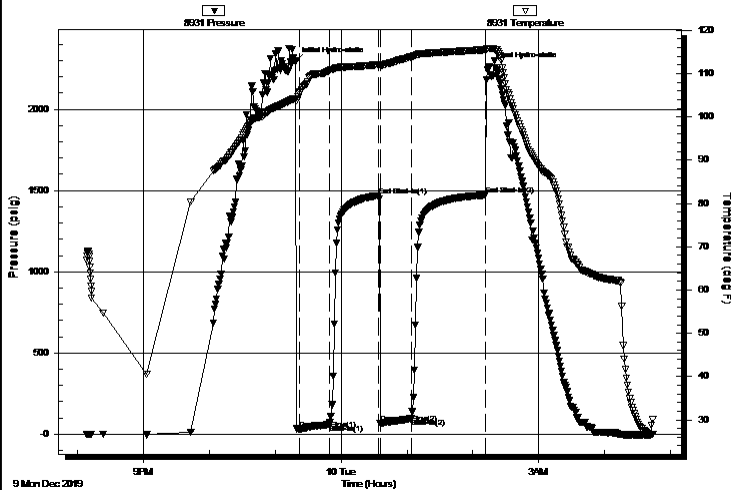
TEST COMMENT: IF: Strong Blow . B.O.B. in 11 mins. Built to 23.04".

ISI: No Blow .

FF: Strong Blow . B.O.B. in 21 mins. Built to 13.22".

FSI: Weak Blow . Surface to 1/4". Died.

Pressure vs. Time



PRESSURE SUMMARY

Time (Min.)	Pressure (psig)	Temp (deg F)	Annotation
0	2292.39	104.27	Initial Hydro-static
3	29.71	105.48	Open To Flow (1)
31	60.17	110.69	Shut-In(1)
76	1469.54	112.09	End Shut-In(1)
77	65.99	111.81	Open To Flow (2)
105	95.02	113.92	Shut-In(2)
173	1472.67	115.51	End Shut-In(2)
176	2264.57	115.82	Final Hydro-static

Recovery

Length (ft)	Description	Volume (bbl)
65.00	GOWCM 10%g 10%o 15%w 65%m	0.91
65.00	GOCM 5%g 10%o 85%m	0.91
32.00	GOCM 1%g 5%o 94%m	0.45
0.00	320' G.I.P. 100%g	0.00

Gas Rates

	Choke (inches)	Pressure (psig)	Gas Rate (Mcf/d)
--	----------------	-----------------	------------------

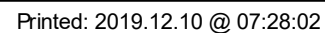
* Recovery from multiple tests

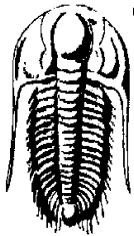


Test Start: 2019.12.09 @ 20:08:13

KB to GR/CF: 12.00 ft

FSI: Weak Blow . Surface to 1/4". Died.





TRILOBITE
TESTING, INC.

DRILL STEM TEST REPORT

FLUID SUMMARY

Griffin, Charles N. (Griffin MNGT)

17-30s-15w Barber Co. , Ks.

P.O. Box 347
Pratt, Ks. 67124

Marlee #1

Job Ticket: 65461

DST#: 2

ATTN: Bruce Reed/ Eli Felt

Test Start: 2019.12.09 @ 20:08:13

Mud and Cushion Information

Mud Type: Gel Chem

Mud Weight: 9.00 lb/gal

Viscosity: 52.00 sec/qt

Water Loss: 8.79 in³

Resistivity: 5000.00 ohm.m

Salinity: ppm

Filter Cake: 0.20 inches

Cushion Type:

Cushion Length:

Cushion Volume:

Gas Cushion Type:

Gas Cushion Pressure:

Oil API: deg API

Water Salinity: 5000 ppm

ft
bbl

psig

Recovery Information

Recovery Table

Length ft	Description	Volume bbl
65.00	GOWCM 10%g 10%o 15%w 65%m	0.912
65.00	GOCM 5%g 10%o 85%m	0.912
32.00	GOCM 1%g 5%o 94%m	0.449
0.00	320' G.I.P. 100%g	0.000

Total Length: 162.00 ft

Total Volume: 2.273 bbl

Num Fluid Samples: 0

Num Gas Bombs: 0

Serial #: None

Laboratory Name:

Laboratory Location:

Recovery Comments:

Serial #: 8931

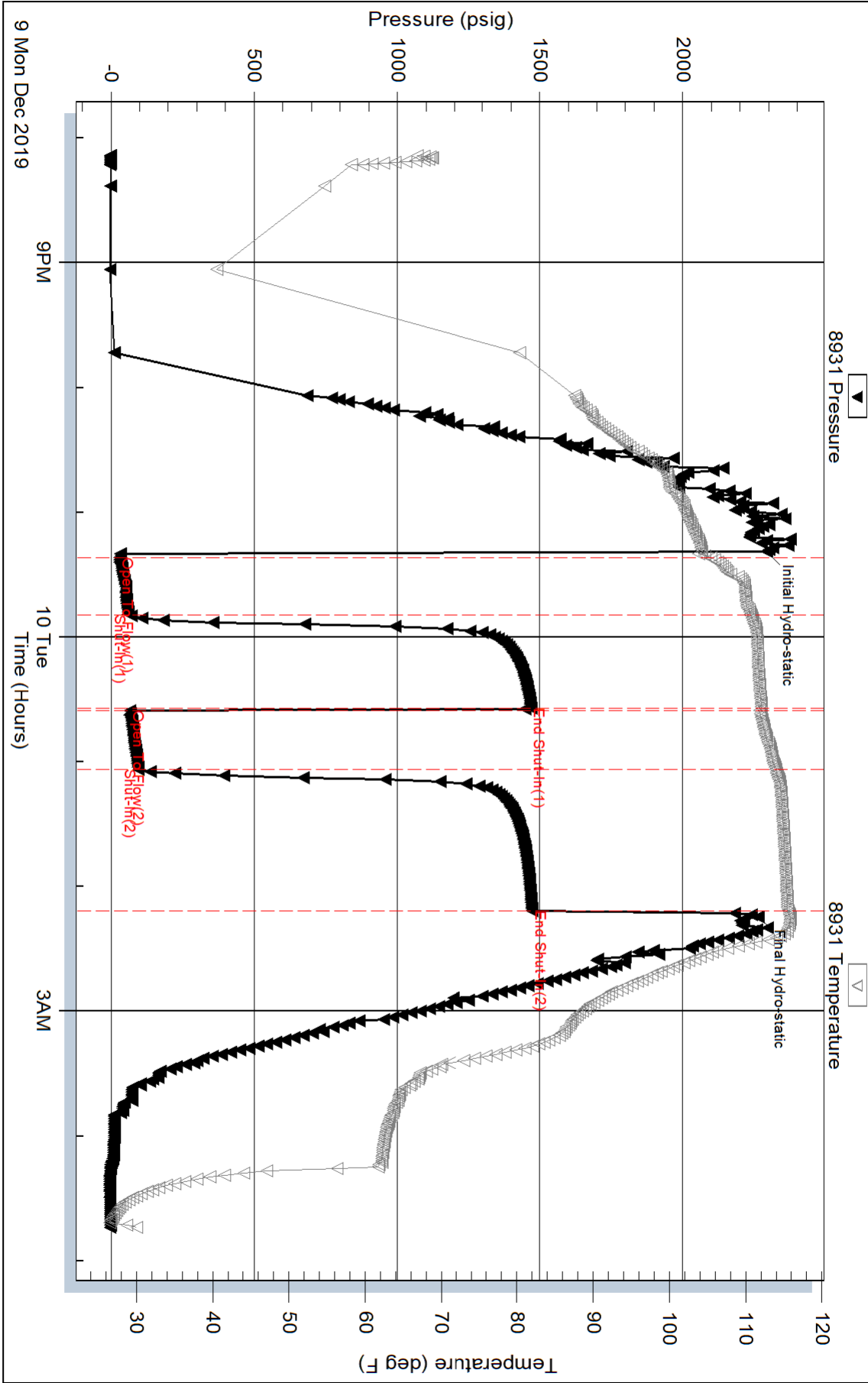
Inside

Griffin, Charles N. (Griffin MNGT)

Marlee #1

DST Test Number: 2

Pressure vs. Time



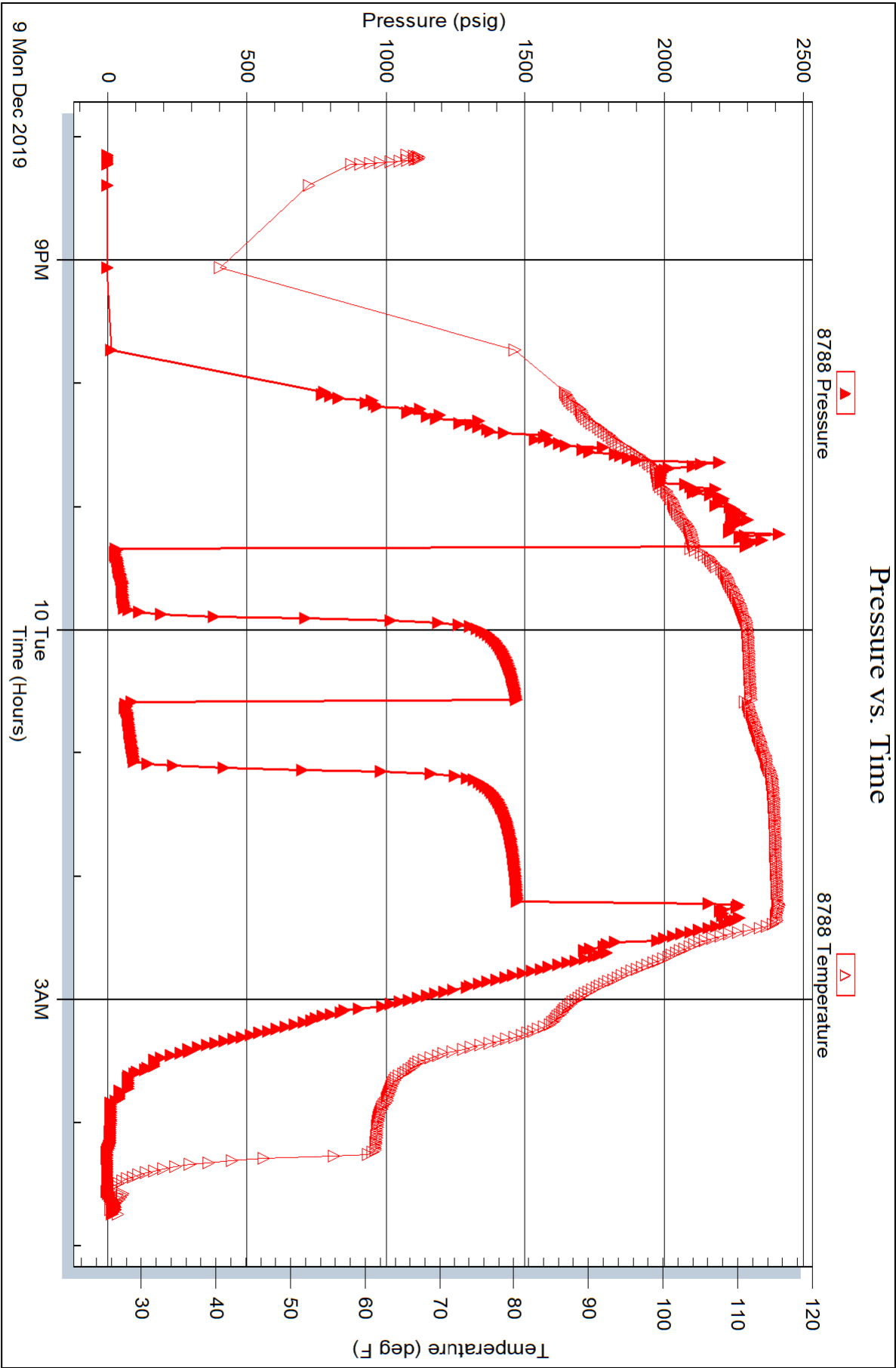
Serial #: 8788

Outside

Griffin, Charles N. (Griffin MNGT)

Marlee #1

DST Test Number: 2



OPERATOR

Company: Charles N. Griffin
Address: PO BOX 347
Pratt, KS 67124

Contact Geologist:
Contact Phone Nbr:

Well Name: #1 Marlee
Location: Section 17-30S-15W
API: 15-007-24365
Pool:
State: Kansas

Field: Turkey Creek North
Country: USA

Scale 1:240 Imperial

Well Name: #1 Marlee
Surface Location: Section 17-30S-15W
Bottom Location:
API: 15-007-24365
License Number:
Spud Date: 12/2/2019
Region: Barber County
Drilling Completed: 12/10/2019
Surface Coordinates: 900' FSL & 980' FEL
Bottom Hole Coordinates:
Ground Elevation: 1877.00ft
K.B. Elevation: 1889.00ft
Logged Interval: 3700.00ft
Total Depth: 4820.00ft
Formation:
Drilling Fluid Type: Chemical (MudCo)

Time: 9:15 PM
Time: 1:15 PM
To: 4820.00ft

SURFACE CO-ORDINATES

Well Type: Vertical
Longitude:
Latitude:
N/S Co-ord: 900' FSL
E/W Co-ord: 980' FEL

LOGGED BY

TERRATECH
ENERGY SERVICE, LLC

Company: TerraTech Energy Service LLC.
Address: 1632 S. West St. Suite 12
Wichita, KS 67208

Phone Nbr: 316-617-3959
Logged By: Geologist

Name: Bruce Reed

CONTRACTOR

Contractor:	Fossil Drilling		
Rig #:	3		
Rig Type:	mud rotary		
Spud Date:	12/2/2019	Time:	9:15 PM
TD Date:	12/10/2019	Time:	1:15 PM
Rig Release:	12/11/2019	Time:	2:45 PM

ELEVATIONS

K.B. Elevation:	1889.00ft	Ground Elevation:	1877.00ft
K.B. to Ground:	12.00ft		

NOTES

Surface Casing: 8-5/8" at 268'
 Production Casing: 4-1/2" at 4812'

Daily Penetration:	12/02/19	Spud @ 9:15 PM
	12/03/19	270'
	12/04/19	780'
	12/05/19	2200'
	12/06/19	2991'
	12/07/19	3725'
	12/08/19	4464'
	12/09/19	4530'
	12/10/19	4680' RTD @ 1:15 PM
	12/11/19	4820' Rig released @ 2:45 PM

DRILL STEM TEST

DST #1 4395' - 4500', Marmaton. Weak blow through-out both flow periods.

Recovered: 15' Drilling Mud

IFP: 30" 29-32 psi, ISIP: 45" 59 psi, FFP: 60" 32-37 psi, FSIP: 60" 51 psi

DST #2 4610' - 4680', Viola. Strong blow, bottom of the bucket in 11 minutes during the initial flow period. Strong blow, bottom of the bucket in 21 minutes during the second flow period.

Recovered: 320' Gas in Pipe, 32' GOCM (1% gas, 5% oil, 94% mud), 65' GOCM (5% gas, 10% oil, 85% mud) and 65' GOWCM (10% gas, 10% oil, 15% water, 65% mud)

IFP: 30" 30-60 psi, ISIP: 45" 1470 psi, FFP: 30" 66-95 psi, FSIP: 60" 1473 psi

FORMATION TOPS

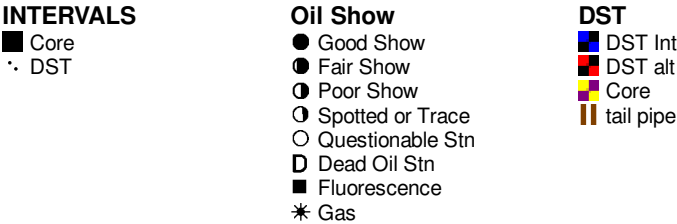
<u>Formation</u>	<u>Sample Top</u>	<u>Datum</u>	<u>Log Top</u>	<u>Datum</u>	<u>Comparison*</u>
Heebner	3824'	-1935	3820'	-1931	+2
Brown Lime	4003'	-2114	3997'	-2108	+3
Lansing	4019'	-2134	4014'	-2125	+4
Stark	4327'	-2438	4328'	-2439	-3
BKC	4420'	-2531	4416'	-2527	-4
Pawnee	4485'	-2596	4479'	-2590	-1
Cherokee	4524'	-2635	4518'	-2629	-24
Viola	4609'	-2720	4603'	-2714	-43
Simpson	4750'	-2861	4744'	-2855	-20

*TXO Production, #2 Gibson "C", 990' FNL & 330' FEL, Section 20-30S-15W

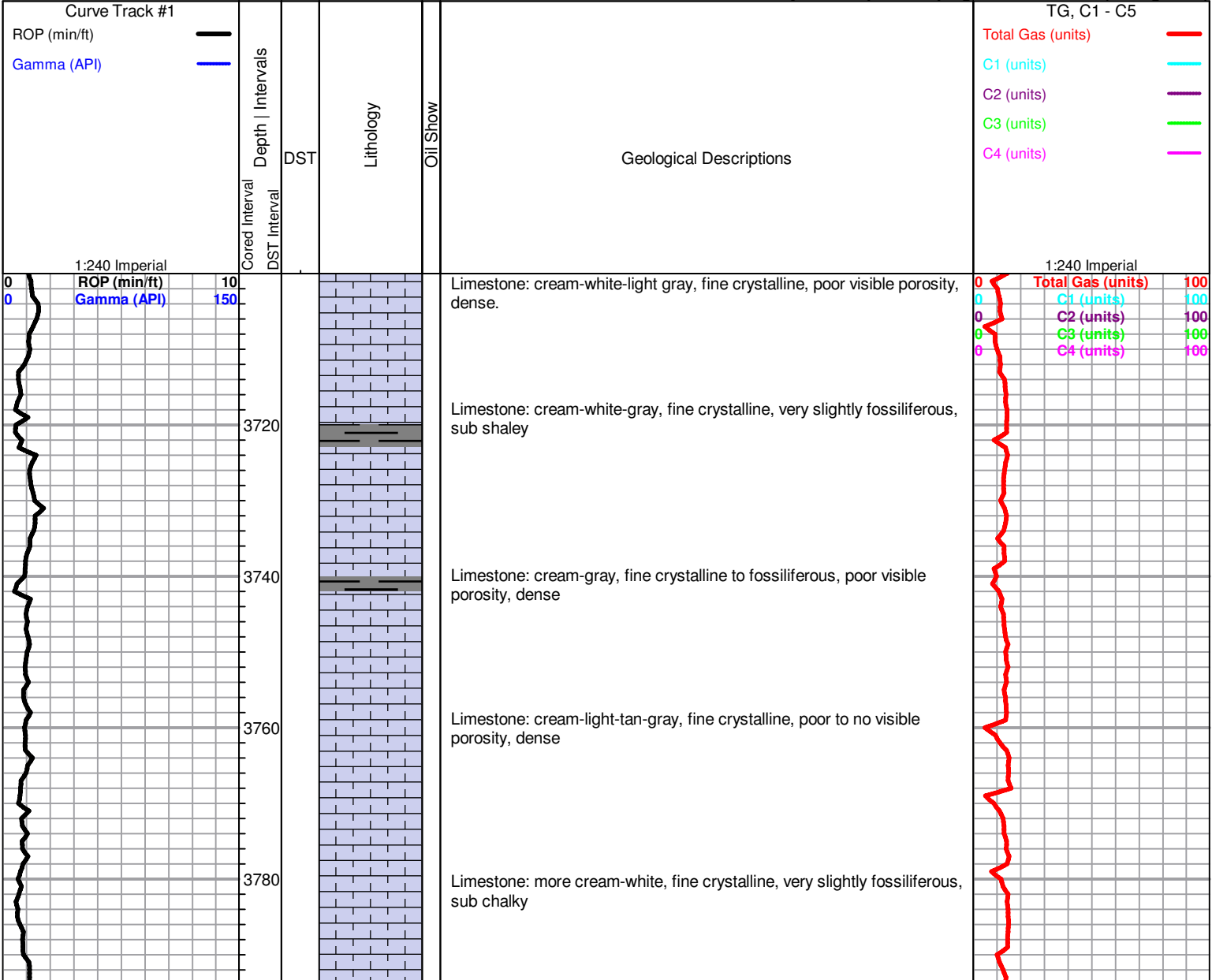
ROCK TYPES

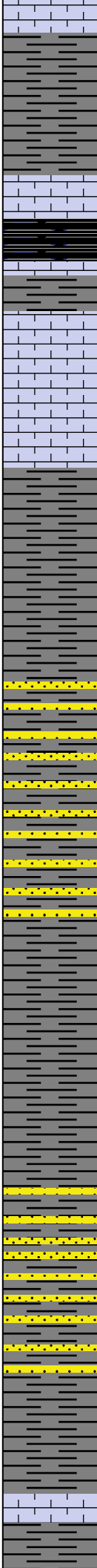
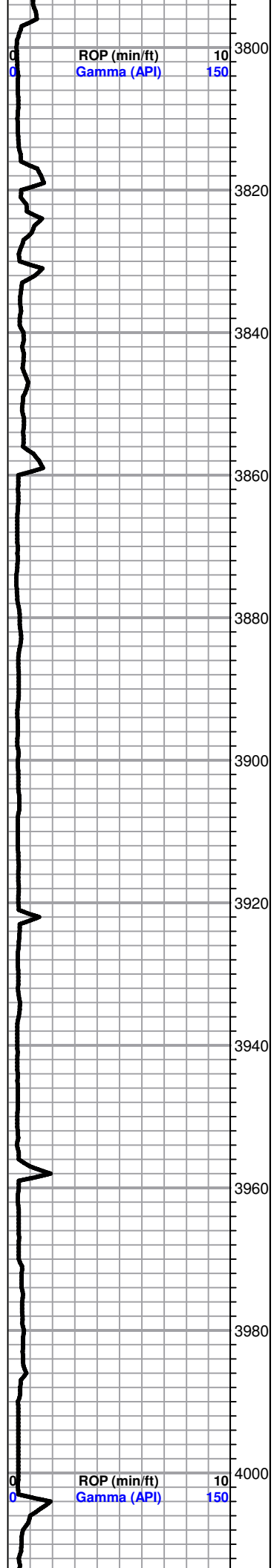


OTHER SYMBOLS



Printed by GEOstrip VC Striplog version 4.0.8.15 (www.grsi.ca)





Limestone: cream-white, fine crystalline, sub chalky

Shale: dark gray-black-brown, few pieces bleed gas

Heebner 3824' (-1935)

Shale: dark-medium gray-black, carbonaceous, fissile, soft, some light-brown, dense limestone

Limestone: light-gray-white, fine crystalline, poor visible porosity, chalky, sample sub-shaley

Limestone: cream-white-light tan, fine crystalline, sub shaley

Shale: light gray-gray, sandy, no shows

Shale: as above

Shale: light gray-gray, sandy

Shale: light gray, sandy, few sandstone clusters, micaceous

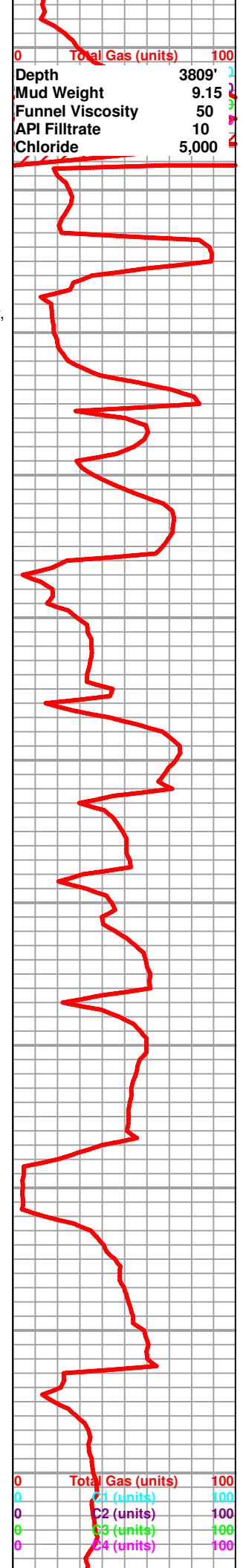
* Sandstone: cream-light gray, fine grained, moderatley friable, questionable odor in fresh sample, few gas bubbles

Shale: light-medium gray with sandstone as above, no shows

Shale: as above, silty to sandy

Brown Lime 4003' (-2114)

Shale: gray-green with some pieces dense, brown limestone



Lansing 4019' (-2130)

Limestone: gray-medium tan-cream, fine crystalline, poor to no visible porosity, dense, no shows

Limestone: as above

Limestone: cream-white-light gray, fine crystalline, oolitic to oolitic, sub chalky, no shows

Limestone: cream-white, fine crystalline, chalky, trace gray chert, no shows

Limestone: cream-white, light tan, fine crystalline, poor visible porosity, dense

Limestone: cream-white, light tan, fine crystalline, with some scattered fossiliferous pieces, sub chalky, poor visible porosity, dense

Limestone: cream-white-light tan-gray, fine crystalline, poor visible porosity, dense

Limestone: cream-light tan, mostly fine crystalline, some fossiliferous, poor visible porosity, dense, sub chalky

Limestone: light tan-cream-gray, fossiliferous fragment, sub shaley

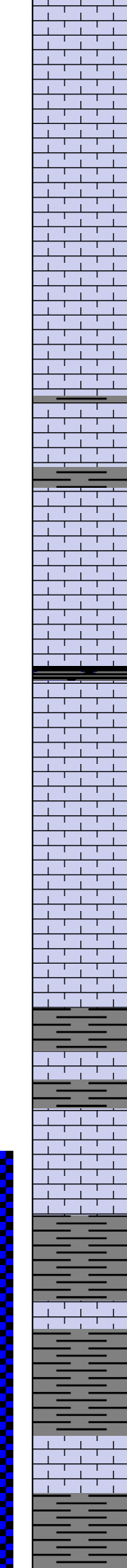
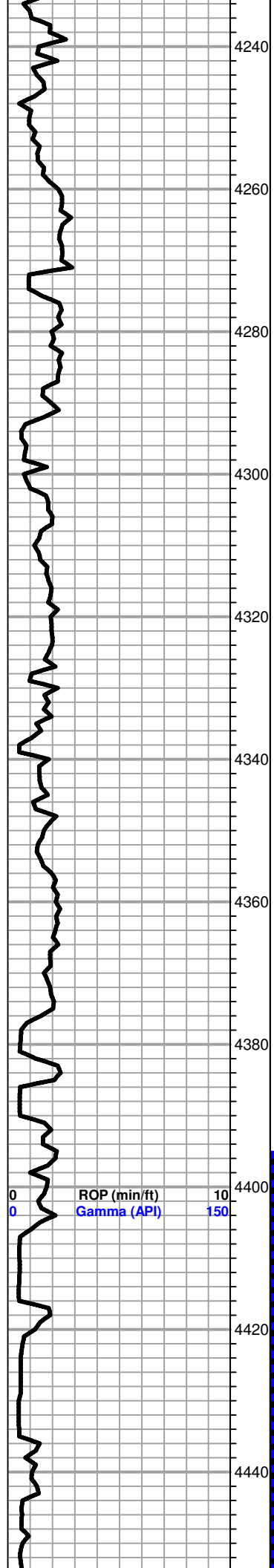
Limestone: cream-white, fine crystalline, lost circulation, lots of varicolored shales

Limestone: cream-white-gray, fine crystalline, dense, sub chalky, samples still carry lots of varicolored shales

Lost circulation

C1 (units) 100
C2 (units) 100
C3 (units) 100

Depth 4215'
Mud Weight 9.2
Funnel Viscosity 58
API Filtrate 8.8
Chloride 7,000



Limestone: cream-white-light tan, fine crystalline, poor visible porosity, dense, some chalky material

Limestone: cream-white-tan, fine crystalline, to fossiliferous, poor visible porosity, dense

Limestone: mostly cream-white, fine crystalline, sub chalky

Limestone: light tan-cream-white, fine crystalline, few pieces very fine limestone, dense, no visible porosity

Limestone: as above

Stark **4327'** **(-2438)**

Limestone: cream-white, fine crystalline, dense, few pieces dark-gray-black shale

Limestone: cream-white-light gray, fine to medium crystalline, poor visible porosity, dense, more dark gray-black shale

Limestone: cream-white, fine crystalline, sub shaley

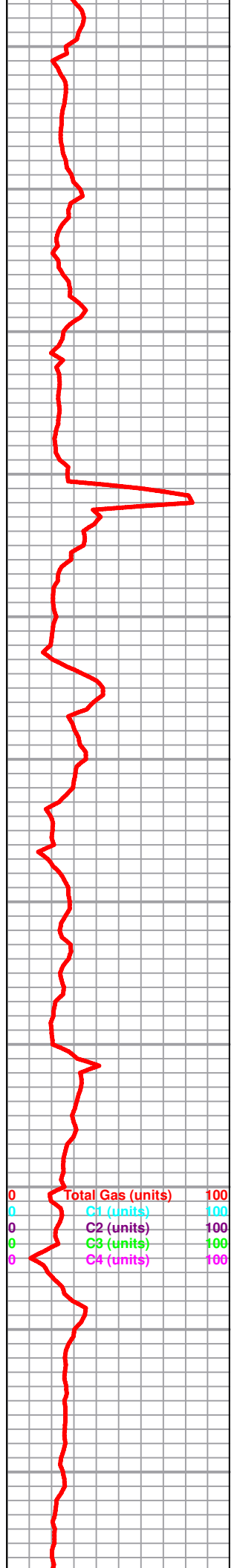
Shale: dark-light gray with some medium tan, dense limestone

B/KC **4420'** **(-2531)**

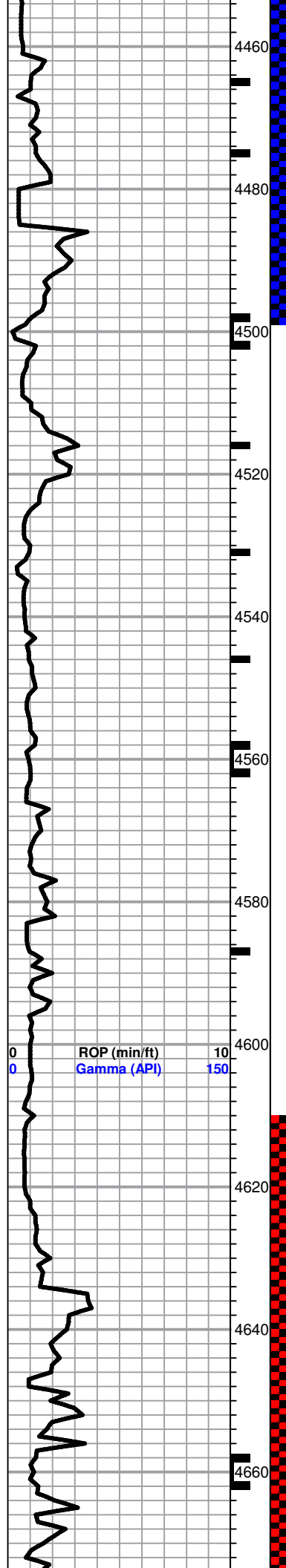
Limestone: cream-brown, fine crystalline, dense, scattered dark-gray-green shale

Marmaton **4435'** **(-2546)**

Shale: light-medium gray with some light tan-cream dense limestone



0	Total Gas (units)	100
0	C1 (units)	100
0	C2 (units)	100
0	C3 (units)	100
0	C4 (units)	100



Circulated at 4464' 30" Shale: medium-light gray, slightly silty, some cream-light brown limestone, fine crystalline, poor visible porosity, no odor 60" Limestone: light cream-tan, fine crystalline with some visible porosity, odor when broken and slight show free oil

Circulated at 4474' Limestone: cream, reef looking porosity, fair to good show free oil and gas

Pawnee 4485' (-2596)

Circulated at 4500' 30" Predominantly gray-green silty shale, some limestone: cream-tan, fine crystalline and dense, sub chalky, few fossiliferous pieces, poor visible porosity, no show 60" Limestone: as above, shale as above, no show

Fort Scott 4509' (-2620)

Circulated at 4515' Predominately vari-colored shales with limestone, fine crystalline, poor to no visible porosity, dense, no show

Cherokee 4524' (-2635)

Circulated at 4530' Limestone: cream-light tan, fine crystalline to fossiliferous, sub chalky, few pieces granular, no odor in fresh, few pieces fossiliferous limestone, exhibit very slight show free oil

Circulated at 4545' Chert: cream-white, dolomitic and weathered, pinpoint edge porosity, green hue, no odor, yet slight show live brown free oil. Shales: multi-colored, gray-brown-red speckled. 60" decrease in weathered chert, samples wash slightly red, red-green-maroon, mottled silty, some green, sandy limestone, no show

Circulated at 4560' 30" 95% vari-colored shales with scattered, vitreous chert, yellow-tan, sample washes slight red, no show. 60" Shale and chert as above, no show

Kinderhook 4582' (-2693)

Circulated at 4586' Abundant shale as above, brittle with some light gray, fine crystalline limestone, scattered clear, vitreous chert, sharp and blocky. 60" cherty limestone: mostly vitreous with rare weathered piece, very poor show, tite

Cherty limestone: gray-cream with vitreous chert, scattered weathered piece with black stain

Cherty limestone: as above, shales: vari-colored, some pieces soft, few individual sandstone grain, clear to frosted white, no show, black residue

Cherty limestone and shales

Limestone: white-cream, medium crystalline, dolomitic chalky chert, dolomite: vitreous to slightly weathered, pinpoint to poor crystalline porosity, Sandstone: white-light cream, semi frosted crystalline to more medium grained, sub rounded to sub angular, cherts and sandstone carries fair show free oil

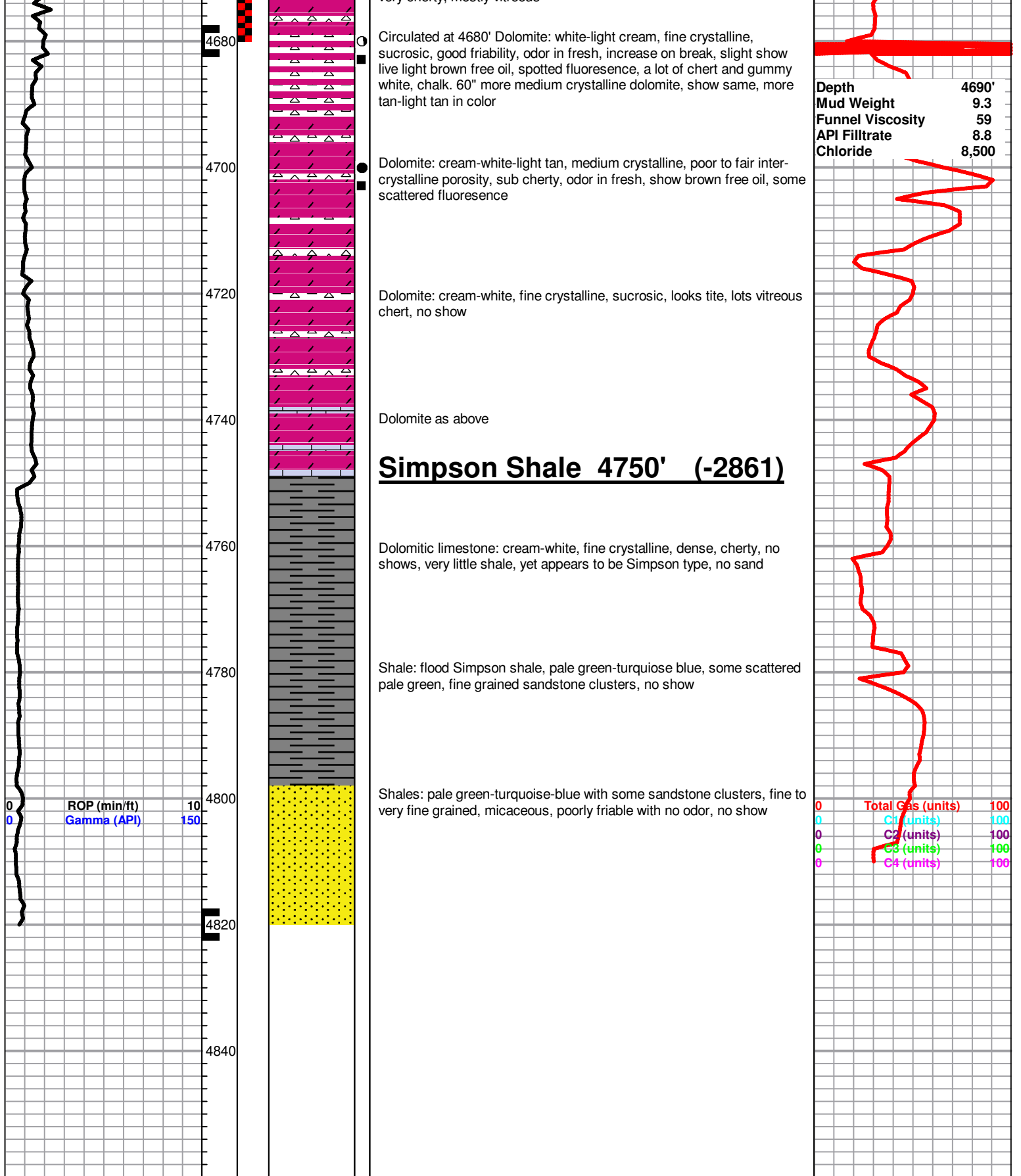
Circulated at 4660' Chalky white limestone, some visible porosity, sandstone as above with show free oil, not much change in 60" sample

Limestone: cream-white, fine crystalline, decrease in chalky material, very cherty, mostly vitreous

Depth 4474'
Mud Weight 9.4
Funnel Viscosity 52
API Filtrate 8.8
Chloride 6,000

Depth 4555'
Mud Weight 9.2
Funnel Viscosity 55
API Filtrate 8.8
Chloride 5,000

0 Total Gas (units) 100
0 C1 (units) 100
0 C2 (units) 100
0 C3 (units) 100
0 C4 (units) 100



QUALITY WELL SERVICE, INC. *Inv C-2223* 7291

Federal Tax I.D. # 481187368

Home Office 30060 N. Hwy 281, Pratt, KS 67124

Mailing Address P.O. Box 468

Office 620-727-3410

Fax 620-672-3663

Rich's Cell 620-727-3409

Brady's Cell 620-727-6964

Date	12-11-19	Sec.	17	Twp.	30S	Range	15W	County	Barber	State	Ks	On Location		Finish	
Lease	MARLEE	Well No.	#1	Location Sun City, Ks N to Belvidere Rd 4.2 W											
Contractor	Fossil Delt RIG 3								Owner 112 N into						
Type Job	4 1/2 L.S.								To Quality Well Service, Inc. You are hereby requested to rent cementing equipment and furnish cement and helper to assist owner or contractor to do work as listed.						
Hole Size	7 7/8								T.D. 4316						
Csg.	4 1/2								Depth 4314						
Tbg. Size									Depth						
Tool									Depth						
Cement Left in Csg.									Shoe Joint 10.16						
Meas Line									Displace 76.4						
EQUIPMENT															
Pumptrk	8	No.		Common 200sx											
Bulktrk	10	No.		Poz. Mix											
Bulktrk		No.		Gel. 376#											
Pickup		No.		Calcium											
JOB SERVICES & REMARKS															
Rat Hole 30sx								Hulls							
Mouse Hole 20sx								Salt 1101#							
Centralizers 1-2-3-4-5-6								Flowseal 50#							
Baskets								Kol-Seal 1000#							
D/V or Port Collar								Mud CLR 48 500 GAL							
Run 17 1/2 4 1/2 10.5 CSG SET @ 4314								CFL-117 or CD110 CAF 38 C16A 112.8"							
START CSG CSG ON Bottom TAG Hook up								Sand CC-1 GAL C41P 47#							
to CSG! BREAK CIRCULAR DROP BALL CIRCULAR								Handling 246 / 8610							
START PUMPING 10 BBL H2O 12 BBL MUD 10 BBL H2O								Mileage 35							
START MIX! Pump 50 sx PUG R-M HOLES								4 1/2 FLOAT EQUIPMENT							
START MIX! Pump 150 sx CSG @ 14.8"/GAL								Guide Shoe HEAD manifold 1 EA							
SHUT DOWN WASH JETTER! RELEASE LD PUG								Centralizer 6 EA							
START DISC w/ 2 1/2 KCL								Baskets							
Lift psi 66 out 1200'								AFU Inserts							
PUG DOWN 76 1/2 at 1200'								Float Shoe							
PS. up csg 1700'								Latch Down 1 EA							
RELEASE! HELD 1/2 BBL BACK								SERVICE Supv 1 EA							
Good circ thru JOB								LMV 35							
Thank You								Pumptrk Charge LONGSTRING							
PLEASE CALL AGAIN								Mileage 70							
TODD IS TAKE															
X Signature <i>T.M.</i>															
Tax															
Discount															
Total Charge															

QUALITY WELL SERVICE, INC.

7282

Federal Tax I.D. # 481187368

Home Office 30060 N. Hwy 281, Pratt, KS 67124

Mailing Address P.O. Box 468

Office 620-727-3410

Fax 620-672-3663

Rich's Cell 620-727-3409

Brady's Cell 620-727-6964

Inv
C-2207

Date	12-3-19	Sec.	17	Twp.	30S	Range	15W	County	Barber	State	Ks	On Location		Finish	
Lease	Marlee	Well No.	#1	Location Sun City Ks N to BELVIDERE Rd											
Contractor	FOSSIL DRLG 216 216 #3							Owner 4.2 W to CATTLE GUARD 1 1/2 N into							
Type Job	SURFACE							To Quality Well Service, Inc. You are hereby requested to rent cementing equipment and furnish cementer and helper to assist owner or contractor to do work as listed.							
Hole Size	12 1/4		T.D.		270'		Charge To Griffin								
Csg.	85/3		Depth		268'		Street								
Tbg. Size			Depth				City								
Tool			Depth				State								
Cement Left in Csg.			Shoe Joint		20		The above was done to satisfaction and supervision of owner agent or contractor.								
Meas Line			Displace		15.8		Cement Amount Ordered 260 & Common								
EQUIPMENT							2 1/2 GAL 3 1/2 CC 1 1/2" PS								
Pumptrk	8	No.					Common 260 &								
Bulktrk	15	No.					Poz. Mix								
Bulktrk		No.					Gel. 489 #								
Pickup		No.					Calcium 733 #								
JOB SERVICES & REMARKS							Hulls								
Rat Hole							Salt								
Mouse Hole							Flowseal 130 #								
Centralizers							Kol-Seal								
Baskets							Mud CLR 48								
D/V or Port Collar							CFL-117 or CD110 CAF 38								
Run to 1 1/2" 85/3 23" Csg set 268'							Sand								
START Csg Csg on Bottom							Handling 280								
Hook up to Csg & Break circ w/ rig							Mileage 35 / 9300								
START Pumping 10 Bbls H2O							85/3 FLOAT EQUIPMENT								
START 1 1/2" Pump 200 & Common							Guide Shoe HEAD MANIFOLD 1 EA								
2 1/2 GAL 3 1/2 CC 1 1/2" PS & 14.8" gal							Centralizer 85/3 WOODEN PLOG 1 EA								
CMT START TO SHOW AT SURFACE & LOST IT							Baskets								
SHOT DOWN RELEASE 85/3 WOODEN PLOG							AFU Inserts								
START Disp							Float Shoe								
Plog down 7:45							Latch Down								
Close Valve on Csg 100'							SERVICE Spv 1 EA								
CMT falling WOL 2 HL							LMV 35								
TAG 20' Down Run 1 1/2" 1"							Pumptrk Charge SURFACE								
Mix i Pump 10754 Cellar 1/2 full							Mileage 70								
WATCH CMT Didn't fall Release															
THANK YOU PLEASE CALL AGAIN															
Signature							Tax								
							Discount								
							Total Charge								