

KANSAS CORPORATION COMMISSION
OIL & GAS CONSERVATION DIVISION

TEMPORARY ABANDONMENT WELL APPLICATION

OPERATOR: License#
Name:
Address 1:
Address 2:
City: State: Zip:
Contact Person:
Phone:
Contact Person Email:
Field Contact Person:
Field Contact Person Phone:

API No. 15-
Spot Description:
Sec. Twp. S. R.
GPS Location: Lat: Long:
Datum: NAD27 NAD83 WGS84
County: Elevation:
Lease Name: Well #:
Well Type: Oil Gas OG WSW Other:
SWD Permit #: ENHR Permit #:
Gas Storage Permit #:
Spud Date: Date Shut-In:

Table with 7 columns: Conductor, Surface, Production, Intermediate, Liner, Tubing. Rows include Size, Setting Depth, Amount of Cement, Top of Cement, Bottom of Cement.

Casing Fluid Level from Surface: How Determined? Date:
Casing Squeeze(s): to w / sacks of cement, to w / sacks of cement. Date:
Do you have a valid Oil & Gas Lease? Yes No
Depth and Type: Junk in Hole at Tools in Hole at Casing Leaks: Yes No Depth of casing leak(s):
Type Completion: ALT. I ALT. II Depth of: DV Tool: w / sacks of cement Port Collar: w / sack of cement
Packer Type: Size: Inch Set at: Feet
Total Depth: Plug Back Depth: Plug Back Method:

Geological Data:

Table with 4 columns: Formation Name, Formation Top, Formation Base, Completion Information. Rows 1 and 2.

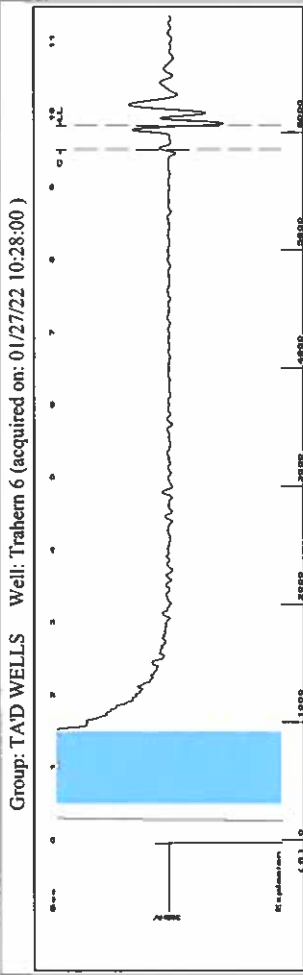
UNDER PENALTY OF PERJURY I HEREBY ATTEST THAT THE INFORMATION CONTAINED HEREIN IS TRUE AND CORRECT TO THE BEST OF MY KNOWLEDGE

Submitted Electronically

Do NOT Write in This Space - KCC USE ONLY
Date Tested: Results: Date Plugged: Date Repaired: Date Put Back in Service:
Review Completed by: Comments:
TA Approved: Yes Denied Date:

Mail to the Appropriate KCC Conservation Office:

Table with 2 columns: Office Address, Phone. Rows for District Office #1, #2, #3, #4.



Filter Type High Pass Automatic Collar Count Yes Time 9.848 sec
 Manual Acoustic Velo 1226.31 ft/s Manual JTS/sec 19.3424 Joints 191.026 Jts
 Depth 6055.54 ft

10.5 to 1.5 (Sec)

Analysis Method: Automatic

Group: TAD WELLS Well: Trahern 6 (acquired on: 01/27/22 10:28:00)

Production	Potential	Casing Pressure	255.9 psi (g)
Oil	- * - BBL/D	Casing Pressure Buildup	0.074 psi
Water	- * - BBL/D	Gas/Liquid Interface Pressure	301.7 psi (g)
Gas	- * - Misc/D	Liquid Level Depth	6055.54 ft
IPR Method	Veget	Pump Intake Depth	6003.00 ft
PBHP/SBHP	- * -	Formation Depth	6067.00 ft
Production Efficiency	0.0		
Oil	40 deg-API		
Water	1.05 Sp.Gr.H2O		
Gas	0.74 Sp.Gr.AIR		
Acoustic Velocity	1229.8 ft/s		

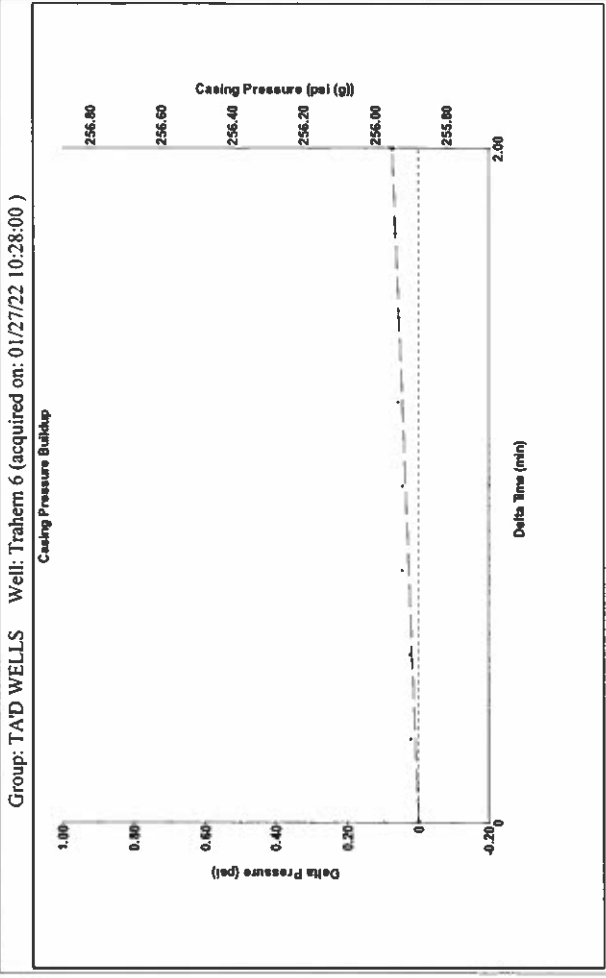
Producing

Annular Gas Flow	2 Mscf/D
% Liquid	91 %

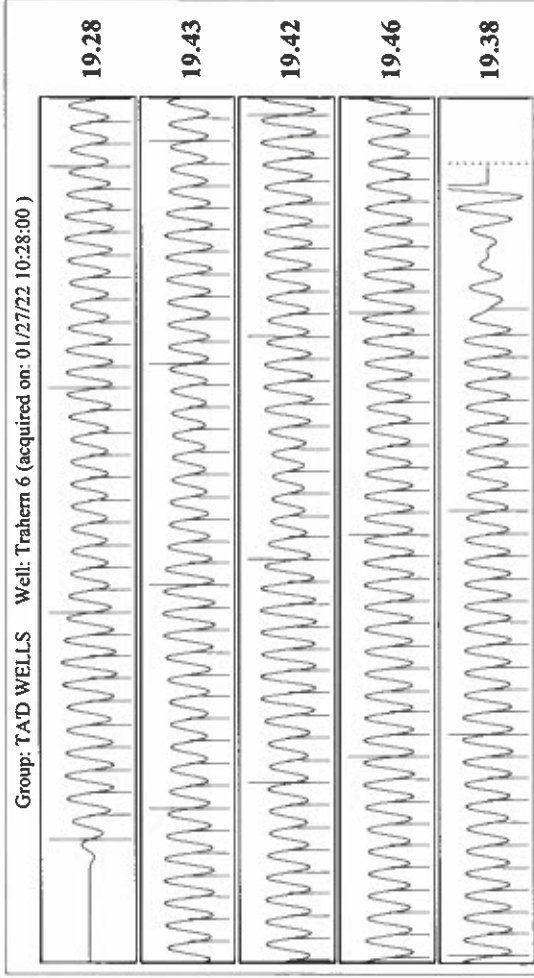
Pump Intake 301.3 psi (g)
 Producing BHP 306.5 psi (g)
 Static BHP - * - psi (g)

Formation Submergence - * - ft
 Total Gaseous Liquid Column HT (TVD) - * - ft
 Equivalent Gas Free Liquid HT (TVD) - * - ft

Acoustic Test



Change in Pressure 0.07 psi PT10857 Range
 Change in Time 2.00 min



Acoustic Velocity	1229.8 ft/s	Joints counted	179
Joints Per Second	19.3975 jts/sec	Joints to liquid level	191.026
Depth to liquid level	6055.54 ft	Filter Width	21.3424
Automatic Collar Count	Yes	Time to 1st Collar	0.284
			9.512

Conservation Division
District Office No. 1
210 E. Frontview, Suite A
Dodge City, KS 67801



Phone: 620-682-7933
<http://kcc.ks.gov/>

Dwight D. Keen, Chair
Susan K. Duffy, Commissioner
Andrew J. French, Commissioner

Laura Kelly, Governor

March 03, 2022

Katherine McClurkan
Merit Energy Company, LLC
13727 Noel Road, Suite 1200
Dallas, TX 75240-7362

Re: Temporary Abandonment
API 15-129-21807-00-01
Trahern 6-G20-31-39
NE/4 Sec.20-31S-39W
Morton County, Kansas

Dear Katherine McClurkan:

"Your temporary abandonment (TA) application for the well listed above has been approved. In accordance with K.A.R. 82-3-111 the TA status of this well will expire 03/03/2023.

- * If you return this well to service or plug it, please notify the District Office.
- * If you sell this well you are required to file a Transfer of Operator form, T-1.
- * If the well will remain temporarily abandoned, you must submit a new TA application, CP-111, before 03/03/2023.

You may contact me at the number above if you have questions.

Very truly yours,

Michael Maier"