

Form	ACO1 - Well Completion
Operator	K & N Petroleum, Inc.
Well Name	SCHLESSIGER 3-1
Doc ID	1631363

Tops

Name	Top	Datum
Anhydrite	635	1174
Base Anhydrite	658	1151
Topeka	2654	-845
Heebner	2907	-1098
Toronto	2924	-1115
Douglas	2940	-1131
Brown Lime	3018	-1209
Lansing	3033	-1224
Base Kansas City	3294	-1485
Conglomerate	3302	-1493
Arbuckle	3350	-1541

Form	ACO1 - Well Completion
Operator	K & N Petroleum, Inc.
Well Name	SCHLESSIGER 3-1
Doc ID	1631363

Casing

Purpose Of String	Size Hole Drilled	Size Casing Set	Weight	Setting Depth	Type Of Cement	Number of Sacks Used	Type and Percent Additives
Surface	12.25	8.625	24	361	60/40 Poz	250	2% Gel, 3% CC



TRILOBITE
TESTING, INC.

DRILL STEM TEST REPORT

K&N Petroleum Inc.

3/18/11

1105 Walnut St.
Great Bend, KS 67530

Schlessiger #3-1

Job Ticket: 67828

DST#: 1

ATTN: Jim Musgrove

Test Start: 2021.11.30 @ 00:10:00

GENERAL INFORMATION:

Formation: **LKC A - F**

Deviated: No Whipstock: 1810.00 ft (KB)

Time Tool Opened: 03:01:02

Time Test Ended: 08:12:02

Test Type: Conventional Bottom Hole (Initial)

Tester: Chris Hagman

Unit No: 69

Interval: 3060.00 ft (KB) To 3122.00 ft (KB) (TVD)

Reference Elevations: 1810.00 ft (KB)

Total Depth: 3122.00 ft (KB) (TVD)

1799.00 ft (CF)

Hole Diameter: 7.80 inches Hole Condition: Good

KB to GR/CF: 11.00 ft

Serial #: 8672 Inside

Press@RunDepth: 116.14 psig @ 3062.00 ft (KB)

Capacity: psig

Start Date: 2021.11.30

End Date: 2021.11.30

Last Calib.: 2021.11.30

Start Time: 00:10:01

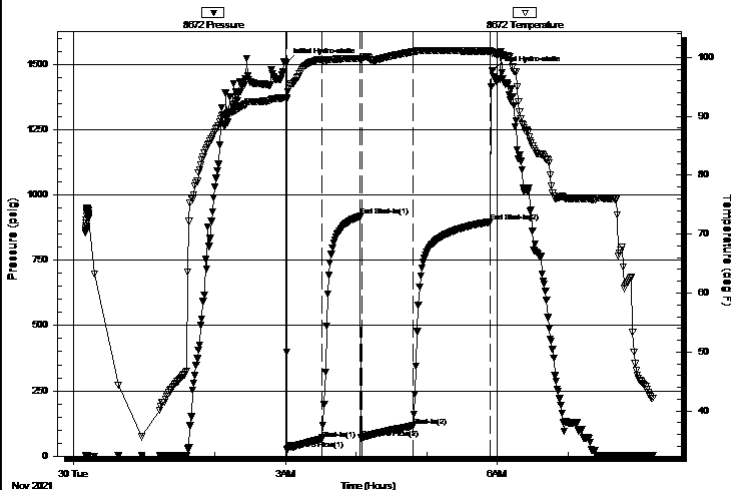
End Time: 08:12:02

Time On Btm: 2021.11.30 @ 03:00:32

Time Off Btm: 2021.11.30 @ 05:55:47

TEST COMMENT: IF: 30 min., BOB 11 min., strong building blow , 33.3 inches
IS: 30 min., Blow back 1 min., weak surface blow
FF: 45 min., BOB 13 min., strong building blow , 41 inches
FS: 60 min., No blow back

Pressure vs. Time



PRESSURE SUMMARY

Time (Min.)	Pressure (psig)	Temp (deg F)	Annotation
0	1505.79	93.18	Initial Hydro-static
1	24.61	92.89	Open To Flow (1)
30	66.03	99.53	Shut-In(1)
63	918.43	99.80	End Shut-In(1)
64	69.81	99.66	Open To Flow (2)
108	116.14	100.91	Shut-In(2)
174	897.33	101.06	End Shut-In(2)
176	1475.12	100.76	Final Hydro-static

Recovery

Length (ft)	Description	Volume (bbl)
95.00	OWCM 20%O,20%W,60%M	1.33
126.00	MW 20%M,80%W	1.77

Gas Rates

	Choke (inches)	Pressure (psig)	Gas Rate (MMcf/d)
--	----------------	-----------------	-------------------



TRILOBITE
TESTING, INC.

DRILL STEM TEST REPORT

K&N Petroleum Inc.

3/18/11

1105 Walnut St.
Great Bend, KS 67530

Schlessiger #3-1

Job Ticket: 67828

DST#: 1

ATTN: Jim Musgrove

Test Start: 2021.11.30 @ 00:10:00

GENERAL INFORMATION:

Formation: **LKC A - F**

Deviated: No Whipstock: 1810.00 ft (KB)

Time Tool Opened: 03:01:02

Time Test Ended: 08:12:02

Test Type: Conventional Bottom Hole (Initial)

Tester: Chris Hagman

Unit No: 69

Interval: 3060.00 ft (KB) To 3122.00 ft (KB) (TVD)

Total Depth: 3122.00 ft (KB) (TVD)

Hole Diameter: 7.80 inches Hole Condition: Good

Reference Elevations: 1810.00 ft (KB)

1799.00 ft (CF)

KB to GR/CF: 11.00 ft

Serial #: 6751

Press@RunDepth: psig @ ft (KB)

Start Date: 2021.11.30

End Date:

2021.11.30

Start Time: 00:10:01

End Time:

08:12:02

Capacity: psig

Last Calib.:

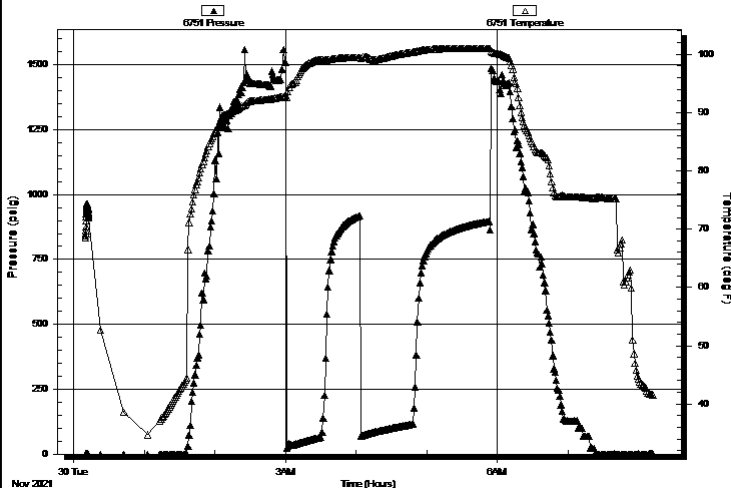
1899.12.30

Time On Btm:

Time Off Btm:

TEST COMMENT: IF: 30 min., BOB 11 min., strong building blow , 33.3 inches
IS: 30 min., Blow back 1 min., weak surface blow
FF: 45 min., BOB 13 min., strong building blow , 41 inches
FS: 60 min., No blow back

Pressure vs. Time



PRESSURE SUMMARY

Time (Min.)	Pressure (psig)	Temp (deg F)	Annotation
-------------	-----------------	--------------	------------

Recovery

Length (ft)	Description	Volume (bbl)
95.00	OWCM 20%O,20%W,60%M	1.33
126.00	MW 20%M,80%W	1.77

Gas Rates

	Choke (inches)	Pressure (psig)	Gas Rate (MMcf/d)
--	----------------	-----------------	-------------------



TRILOBITE
TESTING, INC.

DRILL STEM TEST REPORT

FLUID SUMMARY

K&N Petroleum Inc.

3/18/11

1105 Walnut St.
Great Bend, KS 67530

Schlessiger #3-1

Job Ticket: 67828

DST#: 1

ATTN: Jim Musgrove

Test Start: 2021.11.30 @ 00:10:00

Mud and Cushion Information

Mud Type: Gel Chem

Mud Weight: 9.00 lb/gal

Viscosity: 60.00 sec/qt

Water Loss: 8.39 in³

Resistivity: ohm.m

Salinity: 3000.00 ppm

Filter Cake: inches

Cushion Type:

Cushion Length:

Cushion Volume:

Gas Cushion Type:

Gas Cushion Pressure:

ft

bbl

psig

Oil API:

deg API

Water Salinity: 38000 ppm

Recovery Information

Recovery Table

Length ft	Description	Volume bbl
95.00	OWCM 20%O,20%W,60%M	1.333
126.00	MW 20%M,80%W	1.767

Total Length: 221.00 ft Total Volume: 3.100 bbl

Num Fluid Samples: 0

Num Gas Bombs: 0

Serial #:

Laboratory Name:

Laboratory Location:

Recovery Comments: 284' GIP

RW=.286@46F=38000 ppm

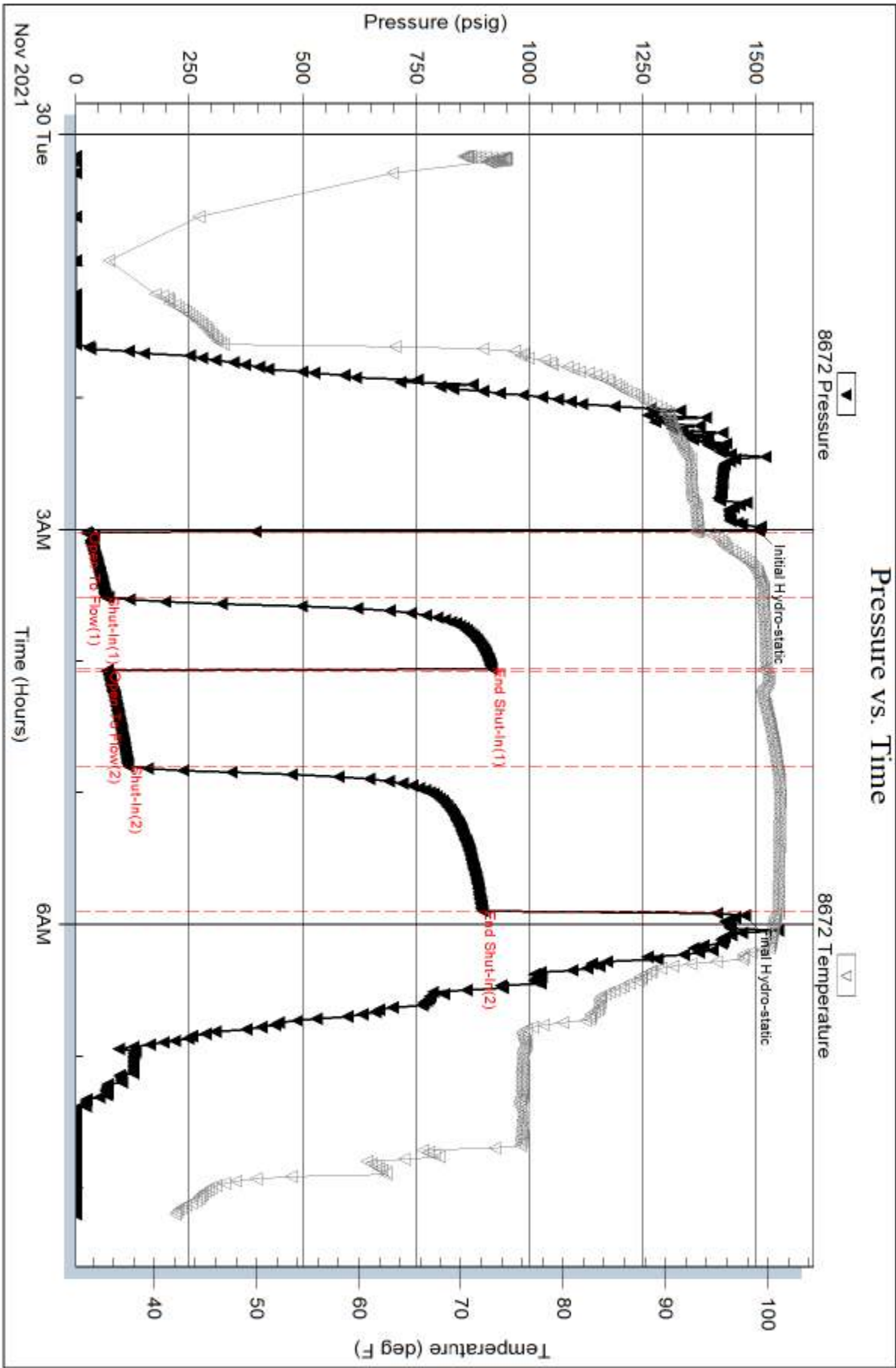
Serial #: 8672

Inside

K&N Petroleum Inc.

Schlessiger #3-1

DST Test Number: 1

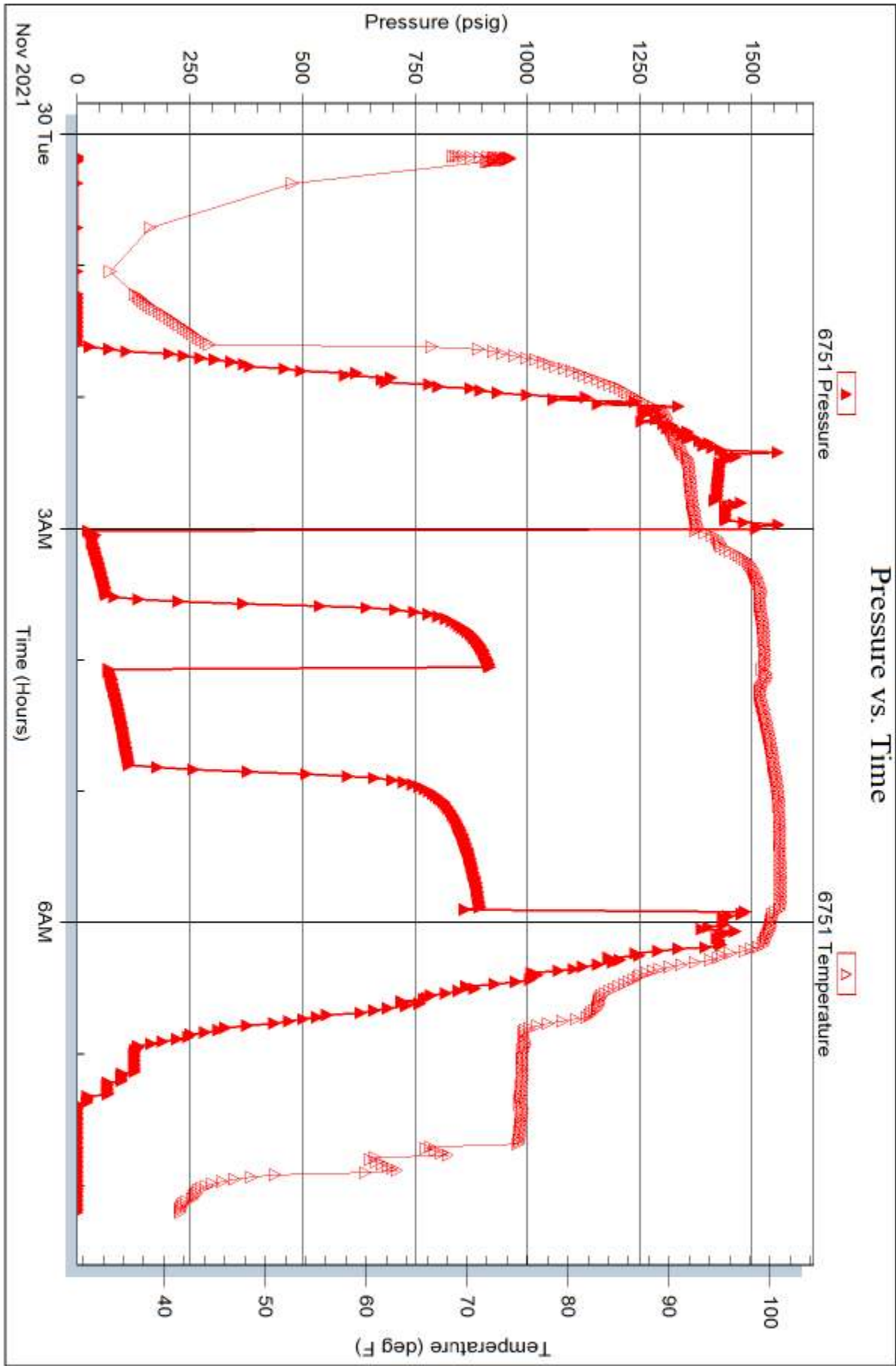


Serial #: 6751

K&N Petroleum Inc.

Schlesinger #3-1

DST Test Number: 1



QWF-197M

OPERATOR

Company: KN Petroleum Inc.
Address: 3105 Walnut Street
Great Bend, KS 67530

Contact Geologist: Jim Musgrove
Contact Phone Nbr: 620-786-0839
Well Name: Schlessiger #3-1
Location: 3-18s-11w NW-SW-NE-SW
API: 15-009-26326-00-00
Pool:
State: Kansas

Field: Claflin
Country: USA

**PETROLEUM, INC.**

Scale 1:240 Imperial

Well Name: Schlessiger #3-1
Surface Location: 3-18s-11w NW-SW-NE-SW
Bottom Location:
API: 15-009-26326-00-00
License Number: 3208
Spud Date: 11/26/2021 Time: 12:00 AM
Region: Barton Time: 12:00 AM
Drilling Completed: 12/1/2021 Time: 12:00 AM
Surface Coordinates: 1882' FSL & 1461' FWL
Bottom Hole Coordinates:
Ground Elevation: 1799.00ft
K.B. Elevation: 1809.00ft
Logged Interval: To: 3410.00ft
Total Depth: 3410.00ft
Formation: Arbuckle
Drilling Fluid Type: Chemical/Fresh Water Gel

SURFACE CO-ORDINATES

Well Type: Vertical
Longitude:
Latitude:
N/S Co-ord: 1882' FSL
E/W Co-ord: 1461' FWL

LOGGED BY

Company: James C Musgrove Petroleum LLC
Address: 212 Main Street/PO Box 215
Claflin, KS 67525

Phone Nbr: 620-588-4250 620-786-0839
Logged By: KLG #307

Name: James C Musgrove

CONTRACTOR

Contractor: Southwind Drilling
Rig #: 1
Rig Type: mud rotary
Spud Date: 11/26/2021
TD Date: 12/1/2021
Rig Release:

Time: 12:00 AM
Time: 12:00 AM
Time:

Ground Elevation: 1799.00ft

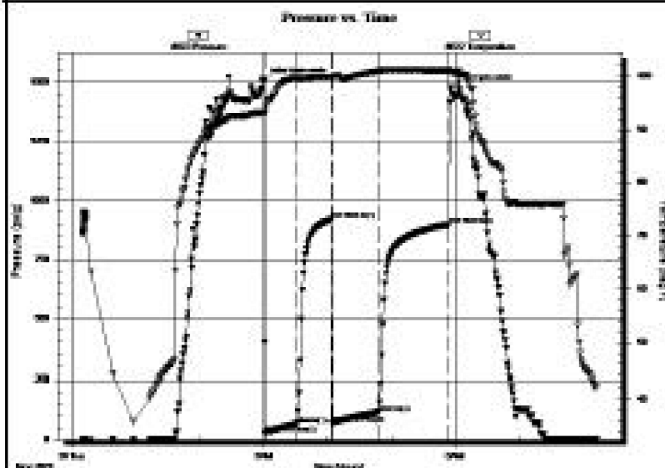
James C Musgrove
Petroleum Geologist

	SCHLESSIGER #3-1 K&N PETROLEUM INC. NW-SW-NE-SW 3-18s-11w 1809 KB				PREAGER #1 FRANCIS RAYMOND NE-NE-NE 3-18s-11w 1812 KB				Structural Relationship		SIMMONS #1 MILES PETRO & JOHN ROY EVANS NW-SE-SW 3-18s-11w 1803 KB				Structural Relationship	
	Sample	Sub-Sea	Log	Sub-Sea	Log	Sub-Sea	Sample	Log	Log	Sub-Sea	Sample	Log				
	Formation															
Anhydrite			635	1174												
Base Anhydrite			658	1151												
Topeka			2654	-845						2644	-841	4				
Heebner			2907	-1098	2902	-1090		-8		2899	-1096	2				
Toronto			2924	-1115						2917	-1114	1				
Douglas			2940	-1131						2931	-1128	3				
Brown Lime			3018	-1209	3015	-1203		-6		3010	-1207	2				
Lansing			3033	-1224	3029	-1217		-7		3024	-1221	3				
Base Kansas City			3294	-1485						3287	-1484	1				
Conglomerate			3302	-1493	3304	-1492		-1								
Arbuckle			3350	-1541	3345	-1533		-8		3328	-1525	16				
Rotary Total Depth			3410	-1601						3331	-1528	73				
Total Depth			3410	-1601	3396	-1584		-17		3336	-1533	68				



Time Off Btrc: 2021.11.30 @ 05:55:47

TEST COMMENT: IF: 30 min., BOB 11 min., strong building blow , 33.3 inches
 IS: 30 min., Blow back 1 min., weak surface blow
 FF: 45 min., BOB 13 min., strong building blow , 41 inches
 FSt: 60 min., No blow back



PRESSURE SUMMARY

Time (Min.)	Pressure (psig)	Temp (deg F)	Annotation
0	1505.79	93.18	Initial Hydro-static
1	24.61	92.89	Open To Flow (1)
30	66.03	99.53	Shut-in(1)
63	918.43	99.80	End Shut-in(1)
64	69.81	99.66	Open To Flow (2)
108	116.14	100.91	Shut-in(2)
174	897.33	101.06	End Shut-in(2)
176	1475.12	100.76	Final Hydro-static

Recovery

Length (ft)	Description	Volume (bbl)
95.00	OWGM 20%O,20%W,60%M	1.33
126.00	MW 20%M,80%W	1.77

Gas Rates

	Choke (Inches)	Pressure (psig)	Gas Rate (MMcfd)
--	----------------	-----------------	------------------

Triobite Testing, Inc

Ref. No: 67828

Printed: 2021.11.30 @ 09:39:12

ROCK TYPES

	Clystgy		Chtcongl		shale, grn		shale, red
	Clystcol		Dolprim		shale, gry		Ss
	Congl		Lmst fw7+		Carbon Sh		Sltst

OTHER SYMBOLS

Oil Show

- Good Show
- Fair Show
- Poor Show
- Spotted or Trace
- Questionable Stn
- D Dead Oil Stn
- Fluorescence
- * Gas

DST

- DST Int
- DST alt
- Core
- tail pipe

Printed by GEOstrip VC Striplog version 4.0.8.15 (www.grsi.ca)

Curve Track #1				TG, C1 - C5			
ROP (min/ft)	—	Depth Intervals	DST	Lithology	Oil Show	Geological Descriptions	Total Gas (units)
Gamma (API)	—						C1 (units)
Cal (in)	---						C2 (units)
							C3 (units)
							C4 (units)
							C5 (units)
1:240 Imperial				1:240 Imperial			
0	ROP (min/ft)	10					0 Total Gas (units)
0	Gamma (API)	150					0 C1 (units)
6	Cal (in)	16					0 C2 (units)

