

KANSAS CORPORATION COMMISSION
OIL & GAS CONSERVATION DIVISION

TEMPORARY ABANDONMENT WELL APPLICATION

OPERATOR: License#
Name:
Address 1:
Address 2:
City: State: Zip:
Contact Person:
Phone:
Contact Person Email:
Field Contact Person:
Field Contact Person Phone:

API No. 15-
Spot Description:
Sec. Twp. S. R.
GPS Location: Lat: Long:
Datum:
County: Elevation:
Lease Name: Well #:
Well Type:
Spud Date: Date Shut-In:

Table with 7 columns: Conductor, Surface, Production, Intermediate, Liner, Tubing. Rows include Size, Setting Depth, Amount of Cement, Top of Cement, Bottom of Cement.

Casing Fluid Level from Surface: How Determined? Date:
Casing Squeeze(s): to w / sacks of cement, to w / sacks of cement. Date:
Do you have a valid Oil & Gas Lease?
Depth and Type: Junk in Hole at Tools in Hole at Casing Leaks:
Type Completion: ALT. I ALT. II Depth of: DV Tool: Port Collar:
Packer Type: Size: Inch Set at: Feet
Total Depth: Plug Back Depth: Plug Back Method:

Geological Data:

Table with 4 columns: Formation Name, Formation Top, Formation Base, Completion Information. Rows 1 and 2.

UNDER PENALTY OF PERJURY I HEREBY ATTEST THAT THE INFORMATION CONTAINED HEREIN IS TRUE AND CORRECT TO THE BEST OF MY KNOWLEDGE

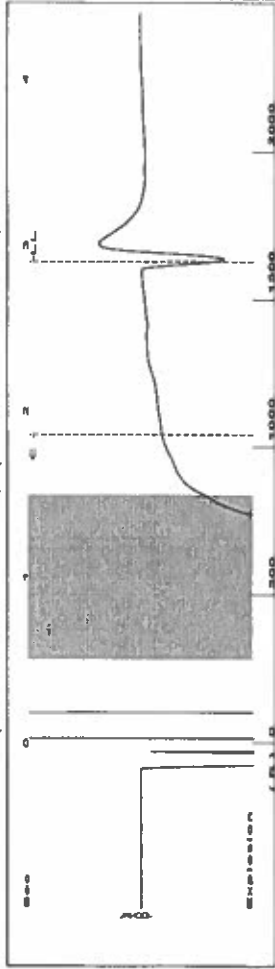
Submitted Electronically

Do NOT Write in This Space - KCC USE ONLY
Date Tested: Results: Date Plugged: Date Repaired: Date Put Back in Service:
Review Completed by: Comments:
TA Approved: Yes Denied Date:

Mail to the Appropriate KCC Conservation Office:

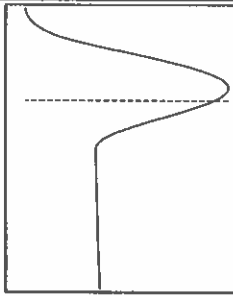
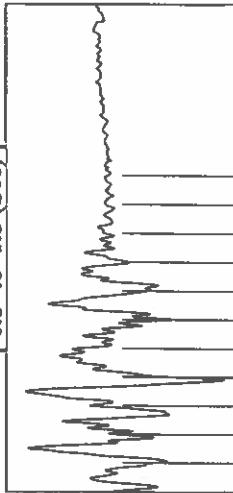
Table with 2 columns: Office Address, Phone. Rows for District Office #1, #2, #3, #4.

Group: Route 2 Well: Shell B-4 (acquired on: 03/12/22 14:58:22)



Filter Type High Pass Automatic Collar Count Yes Time 2.9 sec
 Manual Acoustic Velocity 1076.4 ft/s Manual JTS/sec 16.9779 Joints 51.378
 Depth 1628.68 ft

[0.5 to 1.5 (Sec)]



Analysis Method: Automatic

Group: Route 2 Well: Shell B-4 (acquired on: 03/12/22 14:58:22)

Production	Potential	Casing Pressure	9.7 psi (g)
Current	- * - BBL/D	Casing Pressure Buildup	-0.977 psi
Oil	- * - BBL/D	Gas/Liquid Interface Pressure	2.50 min
Water	- * - Mscf/D	Liquid Level Depth	1628.68 ft
Gas	- * - Mscf/D	Pump Intake Depth	4335.00 ft
IPR Method	Vogel	Formation Depth	4302.00 ft
PBHP/SBHP	- * -		
Production Efficiency	0.0		
Oil	40 deg/API		
Water	1.05 Sp.Gr.H2O		
Gas	0.85 Sp.Gr.AIR		
Acoustic Velocity	1123.23 ft/s		

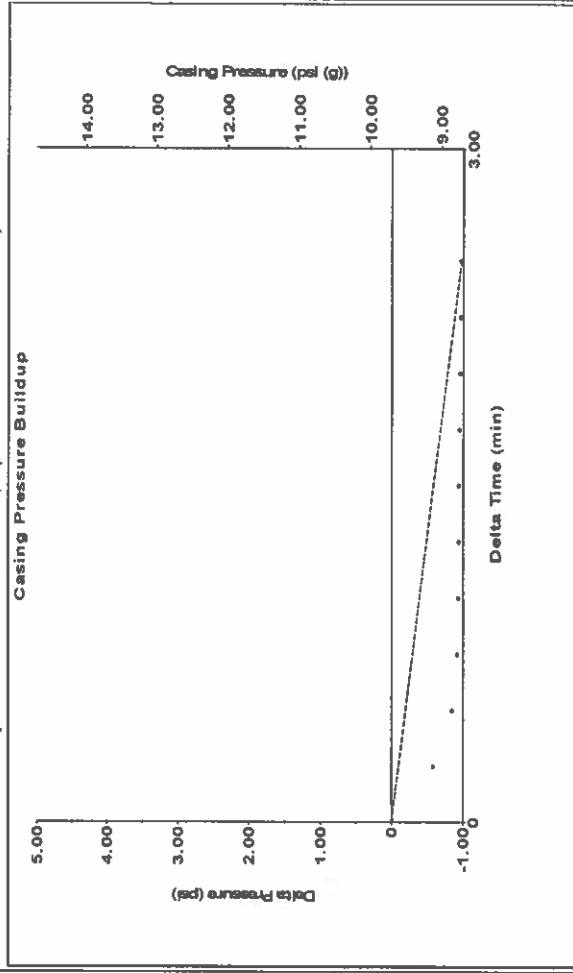
Producing	Annular	Gas Flow	0 Mscf/D
	% Liquid		100 %

Pump Intake	904.1 psi (g)
Producing BHP	893.8 psi (g)
Static BHP	- * - psi (g)

Formation Submergence	2706 ft
Total Gaseous Liquid Column HT (TVD)	2706 ft
Equivalent Gas Free Liquid HT (TVD)	2706 ft

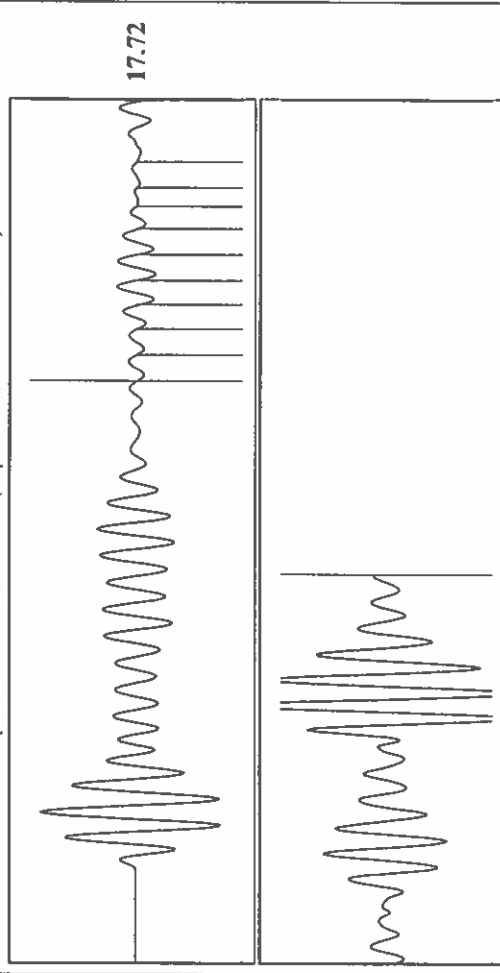
Acoustic Test

Group: Route 2 Well: Shell B-4 (acquired on: 03/12/22 14:58:22)



Change in Pressure -0.98 psi PT13865 Range
 Change in Time 2.50 min

Group: Route 2 Well: Shell B-4 (acquired on: 03/12/22 14:58:22)



Acoustic Velocity 1123.23 ft/s Joints counted 9
 Joints Per Second 17.7165 joints/sec Joints to liquid level 51.378
 Depth to liquid level 1628.68 ft Filter Width 14.9779
 Automatic Collar Count Yes Time to 1st Collar 1.348 1.856

March 17, 2022

Katherine McClurkan
Merit Energy Company, LLC
13727 Noel Road, Suite 1200
Dallas, TX 75240-7362

Re: Temporary Abandonment
API 15-055-22132-00-00
Shell B 4
NW/4 Sec.17-22S-34W
Finney County, Kansas

Dear Katherine McClurkan:

"Your temporary abandonment (TA) application for the well listed above has been approved. In accordance with K.A.R. 82-3-111 the TA status of this well will expire 03/17/2023.

- * If you return this well to service or plug it, please notify the District Office.
- * If you sell this well you are required to file a Transfer of Operator form, T-1.
- * If the well will remain temporarily abandoned, you must submit a new TA application, CP-111, before 03/17/2023.

You may contact me at the number above if you have questions.

Very truly yours,

Michael Maier"