

KANSAS CORPORATION COMMISSION
OIL & GAS CONSERVATION DIVISION

TEMPORARY ABANDONMENT WELL APPLICATION

OPERATOR: License#
Name:
Address 1:
Address 2:
City: State: Zip:
Contact Person:
Phone:
Contact Person Email:
Field Contact Person:
Field Contact Person Phone:

API No. 15-
Spot Description:
Sec. Twp. S. R.
GPS Location: Lat: Long:
Datum: NAD27 NAD83 WGS84
County: Elevation:
Lease Name: Well #:
Well Type: Oil Gas OG WSW Other:
SWD Permit #: ENHR Permit #:
Gas Storage Permit #:
Spud Date: Date Shut-In:

Table with 7 columns: Conductor, Surface, Production, Intermediate, Liner, Tubing. Rows include Size, Setting Depth, Amount of Cement, Top of Cement, Bottom of Cement.

Casing Fluid Level from Surface: How Determined? Date:
Casing Squeeze(s): to w / sacks of cement, to w / sacks of cement. Date:
Do you have a valid Oil & Gas Lease? Yes No
Depth and Type: Junk in Hole at Tools in Hole at Casing Leaks: Yes No Depth of casing leak(s):
Type Completion: ALT. I ALT. II Depth of: DV Tool: w / sacks of cement Port Collar: w / sack of cement
Packer Type: Size: Inch Set at: Feet
Total Depth: Plug Back Depth: Plug Back Method:

Geological Data:

Table with 4 columns: Formation Name, Formation Top, Formation Base, Completion Information. Rows 1 and 2.

UNDER PENALTY OF PERJURY I HEREBY ATTEST THAT THE INFORMATION CONTAINED HEREIN IS TRUE AND CORRECT TO THE BEST OF MY KNOWLEDGE

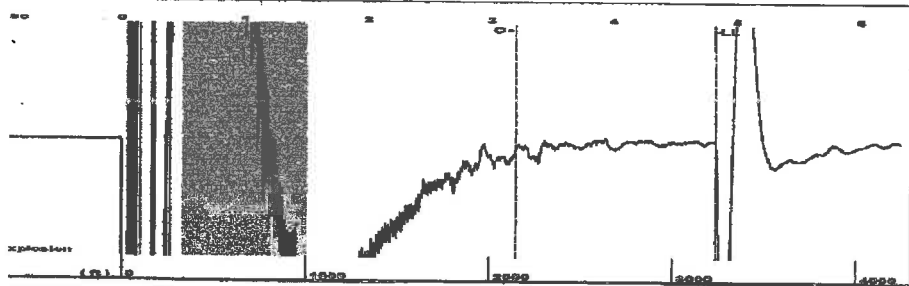
Submitted Electronically

Do NOT Write in This Space - KCC USE ONLY
Date Tested: Results: Date Plugged: Date Repaired: Date Put Back in Service:
Review Completed by: Comments:
TA Approved: Yes Denied Date:

Mail to the Appropriate KCC Conservation Office:

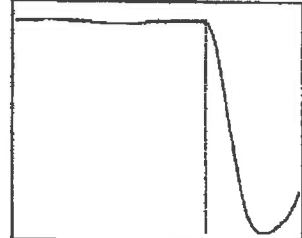
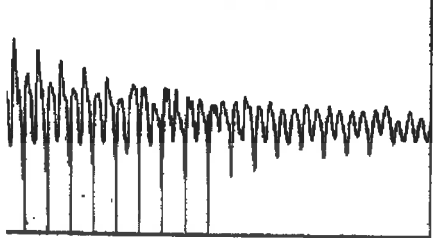
Map of Kansas with 4 numbered districts and corresponding office addresses and phone numbers.

Group: Belpre Well: KWBB (acquired on: 03/15/22 12:30:42)



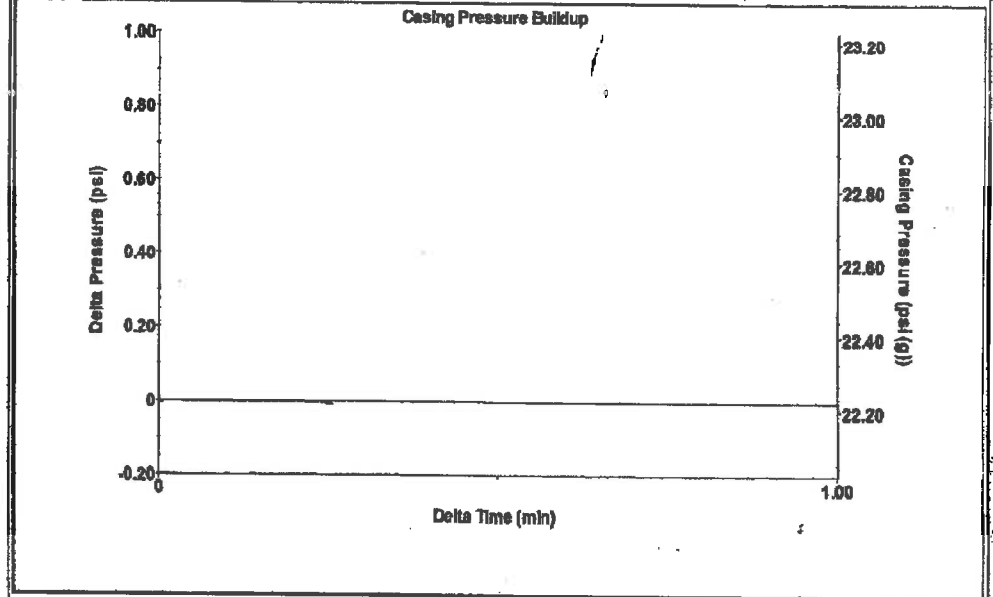
ypc High Pass Automatic Collar Count Yes Time 4.822 sec  
 Acoustic Velo 1344.21 ft/s Manual JTS/sec 21.4592 Joints 103.329 Jts  
 Depth 3236.25 ft

[ 0.5 to 1.5 (Sec) ]



Analysis Method: Automatic

Group: Belpre Well: KWBB (acquired on: 03/15/22 12:30:42)

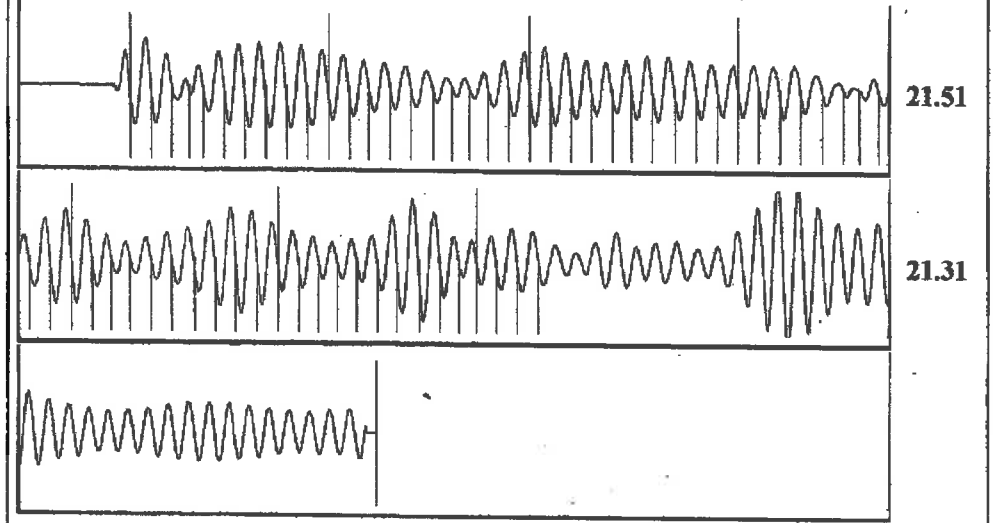


Change in Pressure -0.00 psi PT13440  
 Change in Time 0.25 min Range 0 - ? psi

Group: Belpre Well: KWBB (acquired on: 03/15/22 12:30:42)

Potential - * - BBL/D - * - BBL/D - * - Mscf/D	Casing Pressure 22.2 psi (g)		Producing
Method /SBHP Casing Efficiency 0.0	Casing Pressure Buildup -0.0 psi 0.25 min		Annular Gas Flow 0 Mscf/D % Liquid 100 %
40 deg API 1.05 Sp.Gr.H2O 0.66 Sp.Gr.AIR	Gas/Liquid Interface Pressure 25.0 psi (g)	Liquid Level Depth 3236.25 ft	Pump Intake 368.1 psi (g)
Acoustic Velocity 1342.29 ft/s	Pump Intake Depth 4260.00 ft	Formation Depth 4295.00 ft	Producing BHP 384.0 psi (g)
Submergence Gaseous Liquid Column HT (TVD) 1024 ft Gaseous Free Liquid Column HT (TVD) 1024 ft	Static BHP - * - psi (g)		

Group: Belpre Well: KWBB (acquired on: 03/15/22 12:30:42)



Acoustic Velocity 1342.29 ft/s Joints counted 63  
 Joints Per Second 21.4286 jts/sec Joints to liquid level 103.329  
 Depth to liquid level 3236.25 ft Filter Width 19.4592 23.4592  
 Automatic Collar Count Yes Time to 1st Collar 0.256 3.196

March 17, 2022

Loveness Mpanje  
F. G. Holl Company L.L.C.  
9431 E CENTRAL STE 100  
WICHITA, KS 67206-2563

Re: Temporary Abandonment  
API 15-047-21391-00-01  
KWBB 1-1  
NW/4 Sec.01-24S-17W  
Edwards County, Kansas

Dear Loveness Mpanje:

"Your temporary abandonment (TA) application for the well listed above has been approved. In accordance with K.A.R. 82-3-111 the TA status of this well will expire 03/17/2023.

- \* If you return this well to service or plug it, please notify the District Office.
- \* If you sell this well you are required to file a Transfer of Operator form, T-1.
- \* If the well will remain temporarily abandoned, you must submit a new TA application, CP-111, before 03/17/2023.

You may contact me at the number above if you have questions.

Very truly yours,

Michael Maier"