

KANSAS CORPORATION COMMISSION
OIL & GAS CONSERVATION DIVISION

TEMPORARY ABANDONMENT WELL APPLICATION

OPERATOR: License#
Name:
Address 1:
Address 2:
City: State: Zip:
Contact Person:
Phone:
Contact Person Email:
Field Contact Person:
Field Contact Person Phone:

API No. 15-
Spot Description:
Sec. Twp. S. R.
GPS Location: Lat: Long:
Datum: NAD27 NAD83 WGS84
County: Elevation:
Lease Name: Well #:
Well Type: Oil Gas OG WSW Other:
SWD Permit #: ENHR Permit #:
Gas Storage Permit #:
Spud Date: Date Shut-In:

Table with 7 columns: Conductor, Surface, Production, Intermediate, Liner, Tubing. Rows include Size, Setting Depth, Amount of Cement, Top of Cement, Bottom of Cement.

Casing Fluid Level from Surface: How Determined? Date:
Casing Squeeze(s): to w / sacks of cement, to w / sacks of cement. Date:
Do you have a valid Oil & Gas Lease? Yes No
Depth and Type: Junk in Hole at Tools in Hole at Casing Leaks: Yes No Depth of casing leak(s):
Type Completion: ALT. I ALT. II Depth of: DV Tool: w / sacks of cement Port Collar: w / sack of cement
Packer Type: Size: Inch Set at: Feet
Total Depth: Plug Back Depth: Plug Back Method:

Geological Data:

Table with 4 columns: Formation Name, Formation Top, Formation Base, Completion Information. Rows 1 and 2.

UNDER PENALTY OF PERJURY I HEREBY ATTEST THAT THE INFORMATION CONTAINED HEREIN IS TRUE AND CORRECT TO THE BEST OF MY KNOWLEDGE

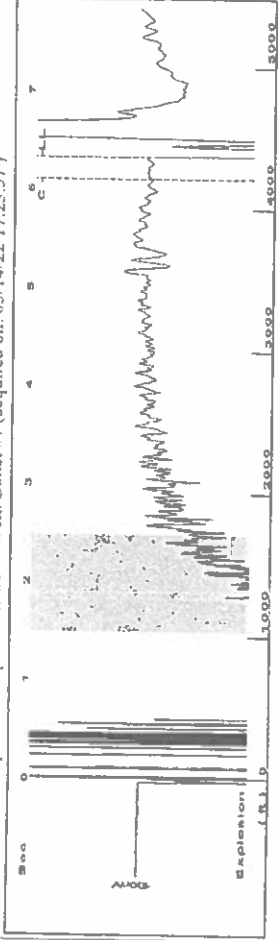
Submitted Electronically

Do NOT Write in This Space - KCC USE ONLY
Date Tested: Results: Date Plugged: Date Repaired: Date Put Back in Service:
Review Completed by: Comments:
TA Approved: Yes Denied Date:

Mail to the Appropriate KCC Conservation Office:

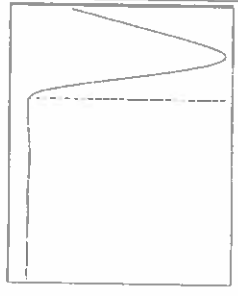
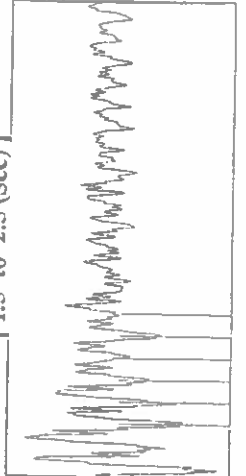
Table with 3 columns: District Office, Address, Phone. Rows for District Office #1, #2, #3, #4.

Group: Clark Exploration Co Well: Ballet #7 (acquired on: 03/14/22 17:23:57)



Filter Type High Pass Automatic Collar Count Yes  
 Manual Acoustic Velocity 1378.26 ft/s Manual JTS/sec 21.7391  
 Time 6.33 sec  
 Joints 137.939 Jts  
 Depth 4372.67 ft

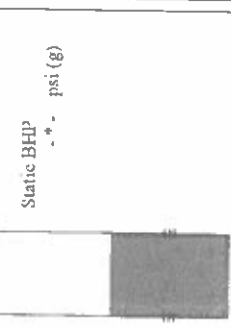
[ 1.5 to 2.5 (Sec) ]



Analysis Method: Automatic

Group: Clark Exploration Co Well: Ballet #7 (acquired on: 03/14/22 17:23:57)

Production	Potential	Casing Pressure	Static
Oil - * -	- * - BBL/D	73.3 psi (g)	Oil Column Height
Water - * -	- * - BBL/D	- * - psi	MD 0 ft
Gas - * -	- * - Msc/D	- * - min	Water Column Height
IPR Method	Vogel	Gas/Liquid Interface Pressure	MD - * - ft
PBHP/SBHP	- * -	- * - psi (g)	Static BHP
Production Efficiency	0.0	Liquid Level Depth	- * - psi (g)
Oil 40 deg API		4372.67 ft	
Water 1.05 Sp.Gr.H2O		Pump Intake Depth	
Gas 0.63 Sp.Gr.AIR		5000.00 ft	
Acoustic Velocity	1381.57 ft/s	Formation Depth	
		5000.00 ft	



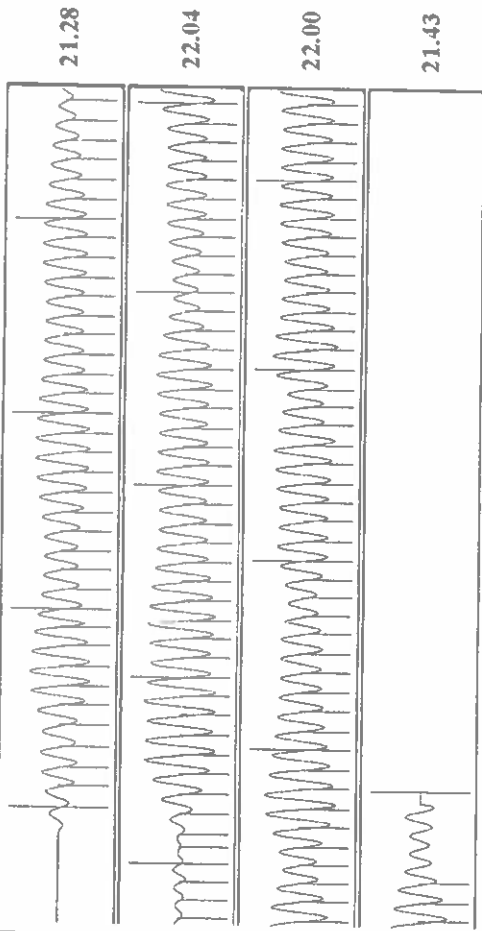
Acoustic Test

Group: Clark Exploration Co Well: Ballet #7 (acquired on: 03/14/22 17:23:57)

NO PRESSURE DATA AVAILABLE

Change in Pressure 0.00 psi PT8496 Range  
 Change in Time 0.00 min 0 - ? psi

Group: Clark Exploration Co Well: Ballet #7 (acquired on: 03/14/22 17:23:57)



Acoustic Velocity 1381.57 ft/s Joints counted 127  
 Joints Per Second 21.7914 Jts/sec Joints to liquid level 137.939  
 Depth to liquid level 4372.67 ft Filter Width 19.7391  
 Automatic Collar Count Yes Time to 1st Collar 6.108

March 24, 2022

Curtis Clark  
Clark, Curtis dba Clark Exploration Co.  
120 S CLERMONT ST  
DENVER, CO 80246-1037

Re: Temporary Abandonment  
API 15-033-20001-00-00  
BALLET RANCH 7  
E/2 Sec.01-35S-16W  
Comanche County, Kansas

Dear Curtis Clark:

"Your temporary abandonment (TA) application for the well listed above has been approved. In accordance with K.A.R. 82-3-111 the TA status of this well will expire 03/24/2023.

- \* If you return this well to service or plug it, please notify the District Office.
- \* If you sell this well you are required to file a Transfer of Operator form, T-1.
- \* If the well will remain temporarily abandoned, you must submit a new TA application, CP-111, before 03/24/2023.

You may contact me at the number above if you have questions.

Very truly yours,

Michael Maier"