

KANSAS CORPORATION COMMISSION
OIL & GAS CONSERVATION DIVISION

TEMPORARY ABANDONMENT WELL APPLICATION

OPERATOR: License#
Name:
Address 1:
Address 2:
City: State: Zip:
Contact Person:
Phone:
Contact Person Email:
Field Contact Person:
Field Contact Person Phone:

API No. 15-
Spot Description:
Sec. Twp. S. R.
GPS Location: Lat: Long:
Datum: NAD27 NAD83 WGS84
County: Elevation:
Lease Name: Well #:
Well Type: Oil Gas OG WSW Other:
SWD Permit #: ENHR Permit #:
Gas Storage Permit #:
Spud Date: Date Shut-In:

Table with 7 columns: Conductor, Surface, Production, Intermediate, Liner, Tubing. Rows include Size, Setting Depth, Amount of Cement, Top of Cement, Bottom of Cement.

Casing Fluid Level from Surface: How Determined? Date:
Casing Squeeze(s): to w / sacks of cement, to w / sacks of cement. Date:
Do you have a valid Oil & Gas Lease? Yes No
Depth and Type: Junk in Hole at Tools in Hole at Casing Leaks: Yes No Depth of casing leak(s):
Type Completion: ALT. I ALT. II Depth of: DV Tool: w / sacks of cement Port Collar: w / sack of cement
Packer Type: Size: Inch Set at: Feet
Total Depth: Plug Back Depth: Plug Back Method:

Geological Data:

Table with 4 columns: Formation Name, Formation Top, Formation Base, Completion Information. Rows 1 and 2.

UNDER PENALTY OF PERJURY I HEREBY ATTEST THAT THE INFORMATION CONTAINED HEREIN IS TRUE AND CORRECT TO THE BEST OF MY KNOWLEDGE

Submitted Electronically

Do NOT Write in This Space - KCC USE ONLY
Date Tested: Results: Date Plugged: Date Repaired: Date Put Back in Service:
Review Completed by: Comments:
TA Approved: Yes Denied Date:

Mail to the Appropriate KCC Conservation Office:

Map of Kansas with 4 numbered districts. Table with 3 columns: District Office Name, Address, Phone Number.

## Liquid Level

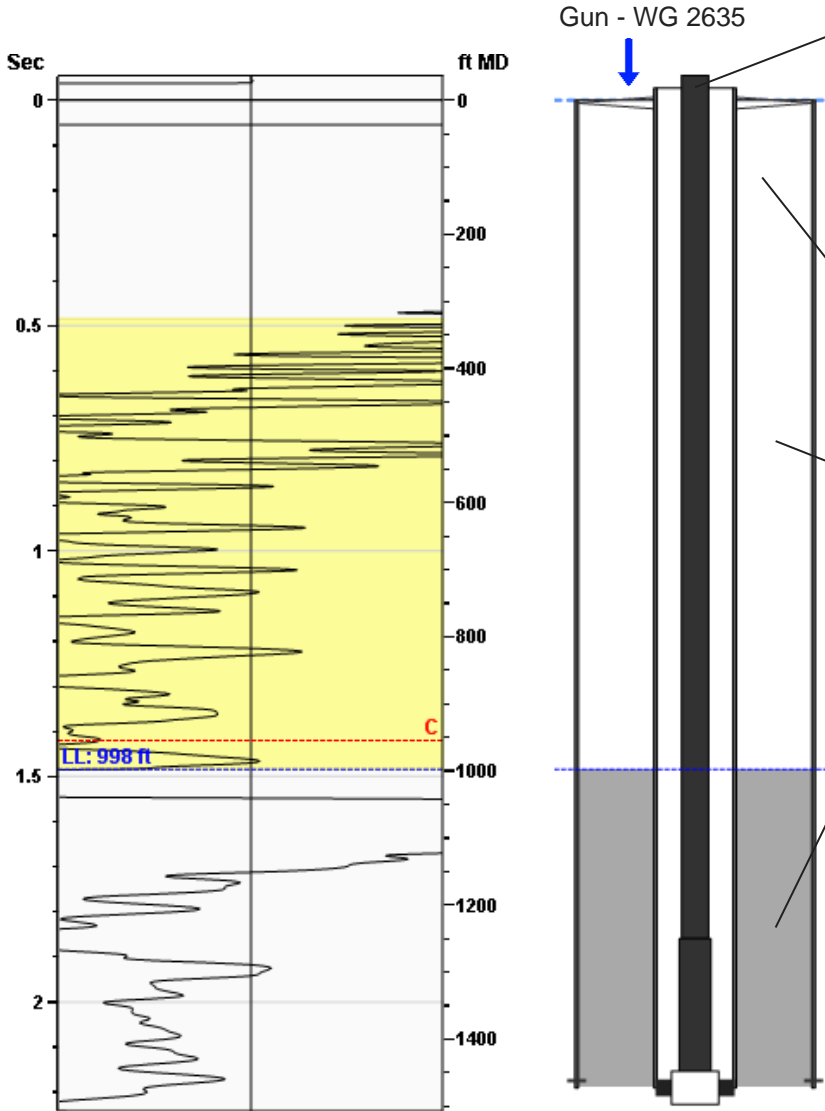
998 ft MD

Fluid Above Pump

475 ft TVD

Equivalent Gas Free Above Pump

472 ft TVD



### Production

Date Entered	02/22/22		
	Current	Potential	
Oil	**	**	BBL/D
Water	**	**	BBL/D
Gas	**	**	Mscf/D
IPR Method	Vogel		
PBHP/SBHP	0.67		
Producing Efficiency	48.65%		

### Casing Pressure

Pressure	37.7 psi (g)
----------	--------------

### Annular Gas Flow

Gas Flow	0.2 Mscf/D
----------	------------

### Fluid Properties

% Liquid Above Pump	99.33%
% Liquid Below Pump	**

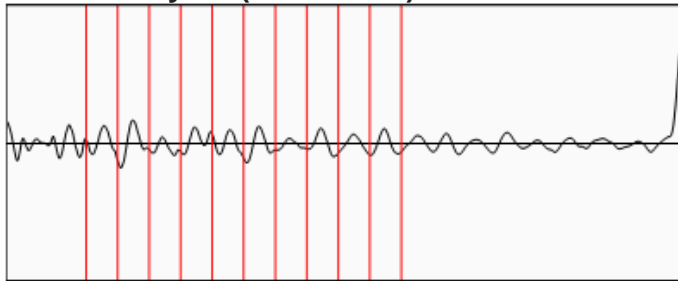
### Depths

Pump Intake Depth	1473 ft
Formation Depth	1472 ft

### Wellbore Pressures

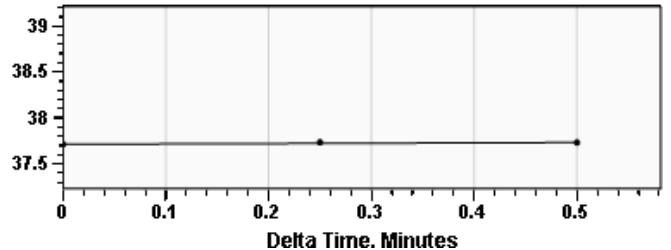
PIP	220.3 psi (g)
PBHP	220.0 psi (g)
SBHP	327.5 psi (g)
Gas/Liq Interface	38.9 psi (g)

### Collar Analysis (Automatic)



Average Acoustic Velocity	1345 ft/s
Average Joints Per Sec.	21.40 Jts/sec
Joints To Liquid	31.76 Jts

### Casing Pressure Buildup



Casing Pressure	37.7 psi (g)
Buildup	0.0 psi (g)
Buildup Time	30 sec
Gas Gravity from Collar Analysis (Automatic)	0.6559 Air = 1

### Comments and Recommendations

Acoustic Test

Echometer Company  
 5001 Ditto Lane  
 Wichita Falls, TX 76302  
 (940) 767-4334  
 info@echometer.com

Conservation Division  
District Office No. 3  
137 E. 21st Street  
Chanute, KS 66720



Phone: 620-902-6450  
<http://kcc.ks.gov/>

Dwight D. Keen, Chair  
Susan K. Duffy, Commissioner  
Andrew J. French, Commissioner

Laura Kelly, Governor

March 25, 2022

Matt Osborn  
Daystar Petroleum, Inc.  
522 N. MAIN ST  
PO BOX 560  
EUREKA, KS 67045-0560

Re: Temporary Abandonment  
API 15-103-21144-00-01  
LEE 7  
SE/4 Sec.08-08S-21E  
Leavenworth County, Kansas

Dear Matt Osborn:

"Your temporary abandonment (TA) application for the well listed above has been approved. In accordance with K.A.R. 82-3-111 the TA status of this well will expire 03/25/2023.

- \* If you return this well to service or plug it, please notify the District Office.
- \* If you sell this well you are required to file a Transfer of Operator form, T-1.
- \* If the well will remain temporarily abandoned, you must submit a new TA application, CP-111, before 03/25/2023.

You may contact me at the number above if you have questions.

Very truly yours,

Levi Short ECRS"