

KANSAS CORPORATION COMMISSION
OIL & GAS CONSERVATION DIVISION

TEMPORARY ABANDONMENT WELL APPLICATION

OPERATOR: License#
Name:
Address 1:
Address 2:
City: State: Zip:
Contact Person:
Phone:
Contact Person Email:
Field Contact Person:
Field Contact Person Phone:

API No. 15-
Spot Description:
Sec. Twp. S. R.
feet from N / S Line of Section
feet from E / W Line of Section
GPS Location: Lat: , Long:
Datum: NAD27 NAD83 WGS84
County: Elevation: GL KB
Lease Name: Well #:
Well Type: (check one) Oil Gas OG WSW Other:
SWD Permit #: ENHR Permit #:
Gas Storage Permit #:
Spud Date: Date Shut-In:

Table with 7 columns: Conductor, Surface, Production, Intermediate, Liner, Tubing. Rows include Size, Setting Depth, Amount of Cement, Top of Cement, Bottom of Cement.

Casing Fluid Level from Surface: How Determined? Date:
Casing Squeeze(s): to w / sacks of cement, to w / sacks of cement. Date:
Do you have a valid Oil & Gas Lease? Yes No
Depth and Type: Junk in Hole at Tools in Hole at Casing Leaks: Yes No Depth of casing leak(s):
Type Completion: ALT. I ALT. II Depth of: DV Tool: w / sacks of cement Port Collar: w / sack of cement
Packer Type: Size: Inch Set at: Feet
Total Depth: Plug Back Depth: Plug Back Method:

Geological Data:

Table with 4 columns: Formation Name, Formation Top, Formation Base, Completion Information. Rows 1 and 2.

UNDER PENALTY OF PERJURY I HEREBY ATTEST THAT THE INFORMATION CONTAINED HEREIN IS TRUE AND CORRECT TO THE BEST OF MY KNOWLEDGE

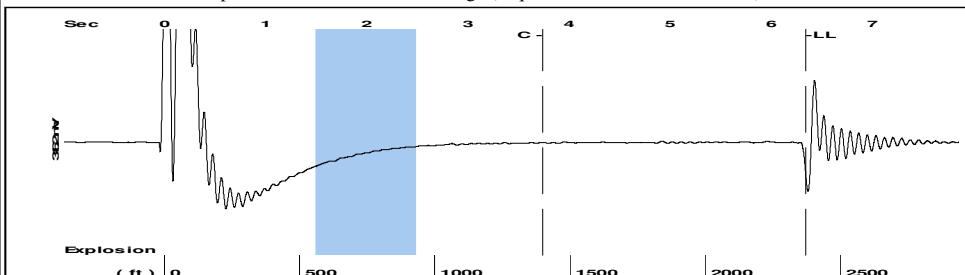
Submitted Electronically

Do NOT Write in This Space - KCC USE ONLY
Date Tested: Results: Date Plugged: Date Repaired: Date Put Back in Service:
Review Completed by: Comments:
TA Approved: Yes Denied Date:

Mail to the Appropriate KCC Conservation Office:

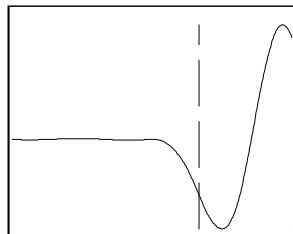
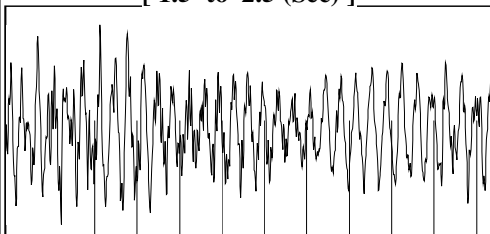
Table with 3 columns: District Office, Address, Phone. Rows for District Office #1, #2, #3, #4.

Group: Red Oak Well: Rita Doidge (acquired on: 03/23/22 14:04:45)



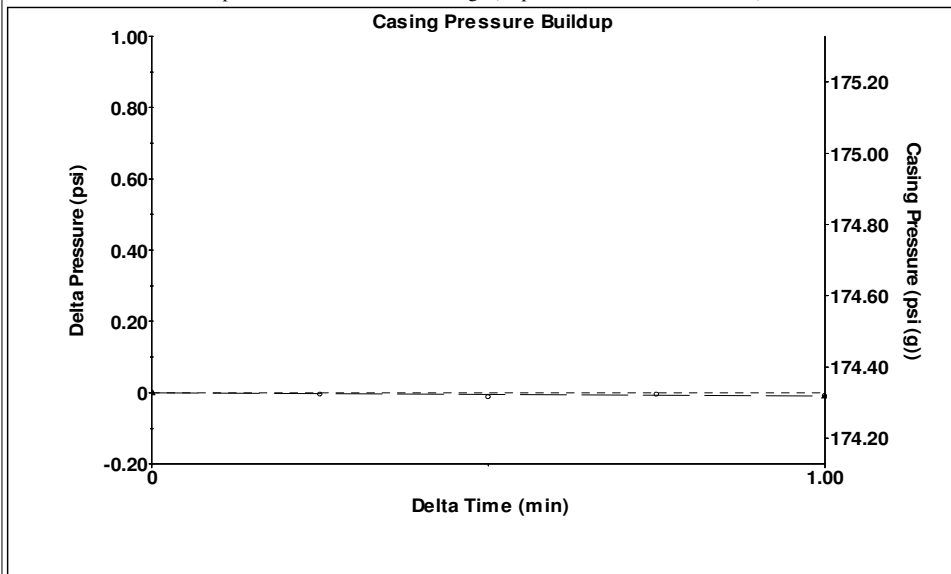
Filter Type High Pass Automatic Collar Count Yes Time 6.341 sec
 Manual Acoustic Velo 727.064 ft/s Manual JTS/sec 11.4679 Joints 74.7932 Jts
 Depth 2370.94 ft

[1.5 to 2.5 (Sec)]



Analysis Method: Automatic

Group: Red Oak Well: Rita Doidge (acquired on: 03/23/22 14:04:45)

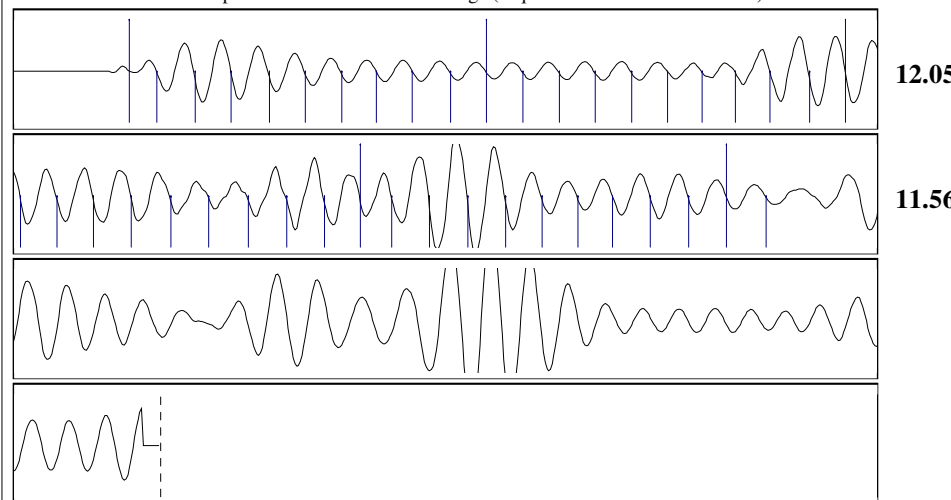


Change in Pressure -0.01 psi PT11179
 Change in Time 1.00 min Range 0 - ? psi

Group: Red Oak Well: Rita Doidge (acquired on: 03/23/22 14:04:45)

<p>Production Current Potential</p> <p>Oil - * - BBL/D</p> <p>Water - * - BBL/D</p> <p>Gas - * - Mscf/D</p> <p>IPR Method Vogel</p> <p>PBHP/SBHP - * -</p> <p>Production Efficiency 0.0</p> <p>Oil 40 deg.API</p> <p>Water 1.05 Sp.Gr.H2O</p> <p>Gas 1.15 Sp.Gr.AIR</p> <p>Acoustic Velocity 747.814 ft/s</p> <p>Formation Submergence</p> <p>Total Gaseous Liquid Column HT (TVD) 3629 ft</p> <p>Equivalent Gas Free Liquid HT (TVD) 3629 ft</p> <p>Acoustic Test</p>	<p>Casing Pressure 174.3 psi (g)</p> <p>Casing Pressure Buildup -0.010 psi</p> <p>Gas/Liquid Interface Pressure 1.00 min</p> <p>195.3 psi (g)</p> <p>Liquid Level Depth 2370.94 ft</p> <p>Pump Intake Depth 6000.00 ft</p> <p>Formation Depth 5900.00 ft</p>		<p>Producing</p> <p>Annular Gas Flow 0 Mscf/D</p> <p>% Liquid 100 %</p> <p>Pump Intake 1324.9 psi (g)</p> <p>Producing BHP 1296.4 psi (g)</p> <p>Static BHP - * - psi (g)</p>
------------------------------------------------------------------------------------------------------------------------------------------------------------------------------------------------------------------------------------------------------------------------------------------------------------------------------------------------------------------------------------------------------------------------------------------------------------------------	--------------------------------------------------------------------------------------------------------------------------------------------------------------------------------------------------------------------------------------------------------------	--	-------------------------------------------------------------------------------------------------------------------------------------------------------------------------------

Group: Red Oak Well: Rita Doidge (acquired on: 03/23/22 14:04:45)



Acoustic Velocity 747.814 ft/s Joints counted 41
 Joints Per Second 11.7952 jts/sec Joints to liquid level 74.7932
 Depth to liquid level 2370.94 ft Filter Width 9.46789 13.4679
 Automatic Collar Count Yes Time to 1st Collar 0.268 3.744

Conservation Division
District Office No. 4
2301 E. 13th Street
Hays, KS 67601-2651



Phone: 785-261-6250
Fax: 785-625-0564
<http://kcc.ks.gov/>

Dwight D. Keen, Chair
Susan K. Duffy, Commissioner
Andrew J. French, Commissioner

Laura Kelly, Governor

March 29, 2022

Ryan Davis
Red Oak Energy, Inc.
7701 E KELLOGG DR STE 710
WICHITA, KS 67207-1738

Re: Temporary Abandonment
API 15-199-20437-00-00
RITA DOIDGE 1-34
NW/4 Sec.34-14S-41W
Wallace County, Kansas

Dear Ryan Davis:

"Your temporary abandonment (TA) application for the well listed above has been approved. In accordance with K.A.R. 82-3-111 the TA status of this well will expire 03/29/2023.

- * If you return this well to service or plug it, please notify the District Office.
- * If you sell this well you are required to file a Transfer of Operator form, T-1.
- * If the well will remain temporarily abandoned, you must submit a new TA application, CP-111, before 03/29/2023.

You may contact me at the number above if you have questions.

Very truly yours,

RICHARD WILLIAMS"