

KANSAS CORPORATION COMMISSION
OIL & GAS CONSERVATION DIVISION

TEMPORARY ABANDONMENT WELL APPLICATION

OPERATOR: License#
Name:
Address 1:
Address 2:
City: State: Zip:
Contact Person:
Phone:
Contact Person Email:
Field Contact Person:
Field Contact Person Phone:

API No. 15-
Spot Description:
Sec. Twp. S. R.
GPS Location: Lat: Long:
Datum: NAD27 NAD83 WGS84
County: Elevation:
Lease Name: Well #:
Well Type: Oil Gas OG WSW Other:
SWD Permit #: ENHR Permit #:
Gas Storage Permit #:
Spud Date: Date Shut-In:

Table with 7 columns: Conductor, Surface, Production, Intermediate, Liner, Tubing. Rows include Size, Setting Depth, Amount of Cement, Top of Cement, Bottom of Cement.

Casing Fluid Level from Surface: How Determined? Date:
Casing Squeeze(s): to w / sacks of cement, to w / sacks of cement. Date:
Do you have a valid Oil & Gas Lease? Yes No
Depth and Type: Junk in Hole at Tools in Hole at Casing Leaks: Yes No Depth of casing leak(s):
Type Completion: ALT. I ALT. II Depth of: DV Tool: w / sacks of cement Port Collar: w / sack of cement
Packer Type: Size: Inch Set at: Feet
Total Depth: Plug Back Depth: Plug Back Method:

Geological Data:

Table with 4 columns: Formation Name, Formation Top, Formation Base, Completion Information. Rows 1 and 2.

UNDER PENALTY OF PERJURY I HEREBY ATTEST THAT THE INFORMATION CONTAINED HEREIN IS TRUE AND CORRECT TO THE BEST OF MY KNOWLEDGE

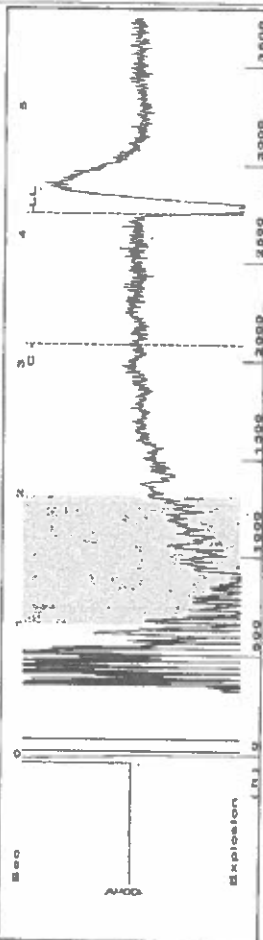
Submitted Electronically

Do NOT Write in This Space - KCC USE ONLY
Date Tested: Results: Date Plugged: Date Repaired: Date Put Back in Service:
Review Completed by: Comments:
TA Approved: Yes Denied Date:

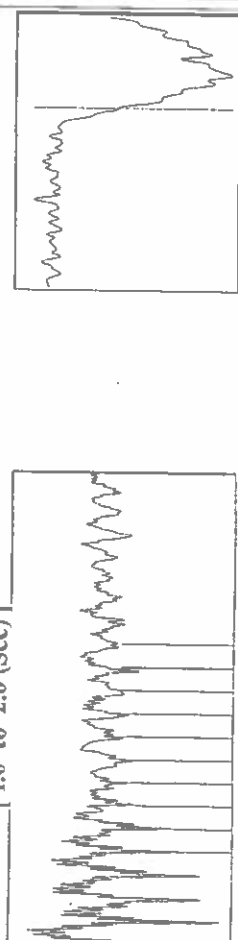
Mail to the Appropriate KCC Conservation Office:

Table with 2 columns: Office Address, Phone. Rows for District Office #1, #2, #3, #4.

Group: CMX Well: Davis 1-12 (acquired on: 11/28/21 15:42:43)



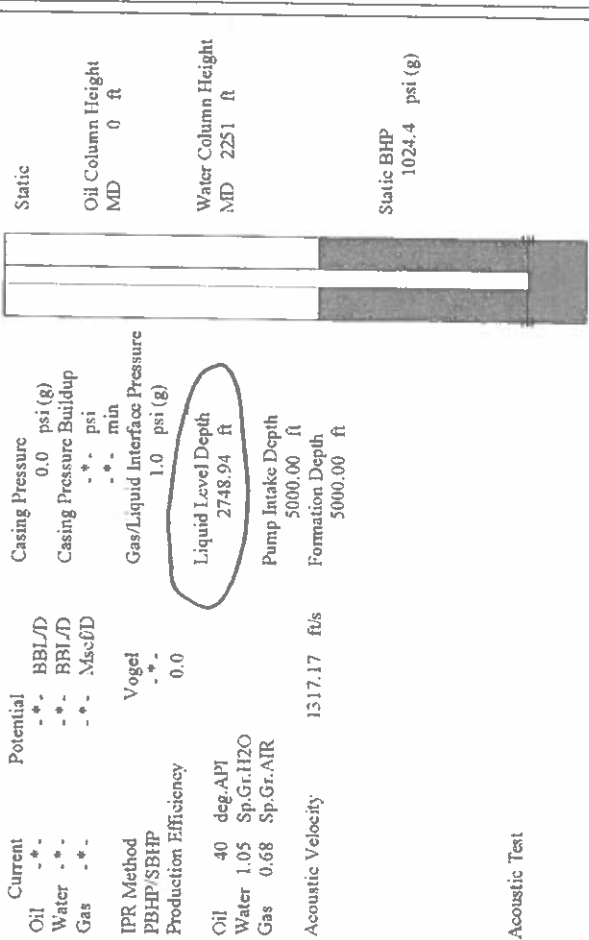
Filter Type High Pass  
 Manual Acoustic Velo 1301.85 ft/s  
 Automatic Collar Count Yes  
 Manual JTS/sec 20.5339  
 Time 4.174 sec  
 Joints 86.7175 Jts  
 Depth 2748.94 ft



NO PRESSURE DATA AVAILABLE

Change in Pressure 0.00 psi PT8496 Range  
 Change in Time 0.00 min 0 - ? psi

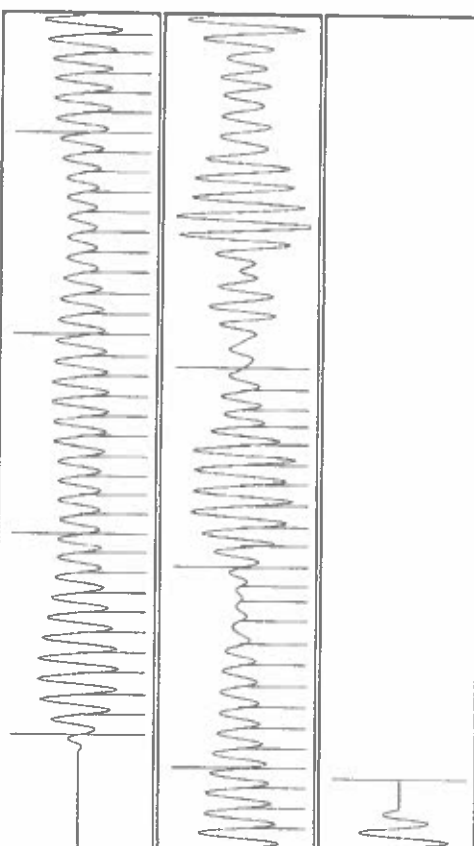
Group: CMX Well: Davis 1-12 (acquired on: 11/28/21 15:42:43)



Production  
 Current  
 Oil -\*- BBL/D  
 Water -\*- BBL/D  
 Gas -\*- Mscf/D  
 Potential  
 Casing Pressure 0.0 psi (g)  
 Casing Pressure Buildup -\*- psi  
 -\*- min  
 Gas/Liquid Interface Pressure 1.0 psi (g)  
 IPR Method Vogel  
 PBHP/SBHP -\*-  
 Production Efficiency 0.0  
 Oil 40 deg API  
 Water 1.05 Sp.Gr.H2O  
 Gas 0.68 Sp.Gr.AIR  
 Acoustic Velocity 1517.17 ft/s  
 Liquid Level Depth 2748.94 ft  
 Pump Intake Depth 5000.00 ft  
 Formation Depth 5000.00 ft

Acoustic Test

Group: CMX Well: Davis 1-12 (acquired on: 11/28/21 15:42:43)



Acoustic Velocity 1317.17 ft/s  
 Joints Per Second 20.7756 jts/sec  
 Depth to liquid level 2748.94 ft  
 Automatic Collar Count Yes  
 Joints counted 60  
 Joints to liquid level 86.7175  
 Filter Width 18.5339  
 Time to 1st Collar 0.272  
 22.5339  
 3.16

March 31, 2022

Douglas H McGinness II  
CMX, Inc.  
9330 E CENTRAL SUITE 300  
WICHITA, KS 67206-6610

Re: Temporary Abandonment  
API 15-007-00639-00-00  
DAVIS RANCH 1-12  
NW/4 Sec.12-35S-15W  
Barber County, Kansas

Dear Douglas H McGinness II:

"Your temporary abandonment (TA) application for the well listed above has been approved. In accordance with K.A.R. 82-3-111 the TA status of this well will expire 03/31/2023.

- \* If you return this well to service or plug it, please notify the District Office.
- \* If you sell this well you are required to file a Transfer of Operator form, T-1.
- \* If the well will remain temporarily abandoned, you must submit a new TA application, CP-111, before 03/31/2023.

You may contact me at the number above if you have questions.

Very truly yours,

Michael Maier"