

KANSAS CORPORATION COMMISSION
OIL & GAS CONSERVATION DIVISION

TEMPORARY ABANDONMENT WELL APPLICATION

OPERATOR: License#
Name:
Address 1:
Address 2:
City: State: Zip:
Contact Person:
Phone:
Contact Person Email:
Field Contact Person:
Field Contact Person Phone:

API No. 15-
Spot Description:
Sec. Twp. S. R.
GPS Location: Lat: Long:
Datum: NAD27 NAD83 WGS84
County: Elevation:
Lease Name: Well #:
Well Type: Oil Gas OG WSW Other:
SWD Permit #: ENHR Permit #:
Gas Storage Permit #:
Spud Date: Date Shut-In:

Table with 7 columns: Conductor, Surface, Production, Intermediate, Liner, Tubing. Rows include Size, Setting Depth, Amount of Cement, Top of Cement, Bottom of Cement.

Casing Fluid Level from Surface: How Determined? Date:
Casing Squeeze(s): to w / sacks of cement, to w / sacks of cement. Date:
Do you have a valid Oil & Gas Lease? Yes No
Depth and Type: Junk in Hole at Tools in Hole at Casing Leaks: Yes No Depth of casing leak(s):
Type Completion: ALT. I ALT. II Depth of: DV Tool: w / sacks of cement Port Collar: w / sack of cement
Packer Type: Size: Inch Set at: Feet
Total Depth: Plug Back Depth: Plug Back Method:

Geological Date:

Table with 4 columns: Formation Name, Formation Top, Formation Base, Completion Information. Rows 1 and 2.

UNDER PENALTY OF PERJURY I HEREBY ATTEST THAT THE INFORMATION CONTAINED HEREIN IS TRUE AND CORRECT TO THE BEST OF MY KNOWLEDGE

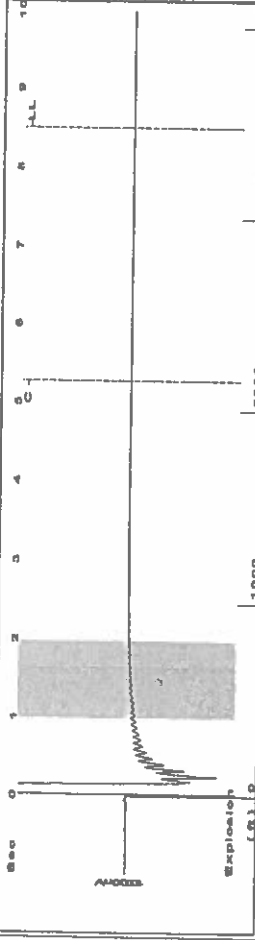
Submitted Electronically

Do NOT Write in This Space - KCC USE ONLY
Date Tested: Results: Date Plugged: Date Repaired: Date Put Back in Service:
Review Completed by: Comments:
TA Approved: Yes Denied Date:

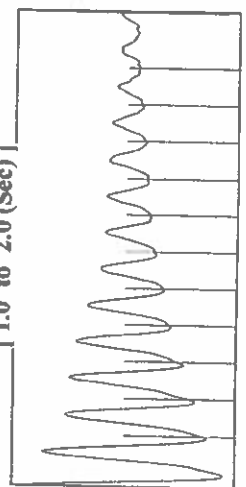
Mail to the Appropriate KCC Conservation Office:

Map of Kansas with 4 numbered districts. Table with 3 columns: District Office Name, Address, Phone Number.

Group: CMX Well: Davis Ranch 2-11 (acquired on: 11/28/21 14:59:58)



Filter Type High Pass  
 Manual Acoustic Veloc 814.91 ft/s  
 Automatic Collar Count Yes  
 Manual JTS/sec 12.8535  
 Time 8.5 sec  
 Joints 109.589 Jts  
 Depth 3473.97 ft



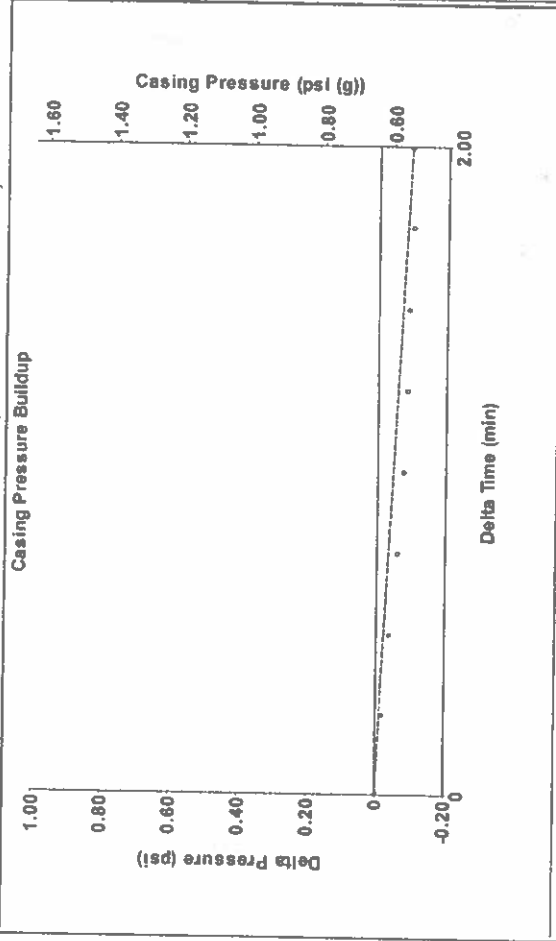
Analysis Method: Automatic

Group: CMX Well: Davis Ranch 2-11 (acquired on: 11/28/21 14:59:58)

Production	Potential	Casing Pressure	0.6 psi (g)
Oil	-*- BBL/D	Casing Pressure Buildup	-0.094 psi
Water	-*- Msc/D	Gas/Liquid Interface Pressure	2.00 min
Gas	-*-	Liquid Level Depth	3473.97 ft
IPR Method	Vogel	Pump Intake Depth	5000.00 ft
PBHP/SBHP	-*-	Formation Depth	5000.00 ft
Production Efficiency	0.0	Static BHP	696.7 psi (g)
Oil	40 deg API	Oil Column Height MD	0 ft
Water	1.05 Sp.Gr.H2O	Water Column Height MD	1526 ft
Gas	1.15 Sp.Gr.AIR	Static	
Acoustic Velocity	817.405 ft/s		

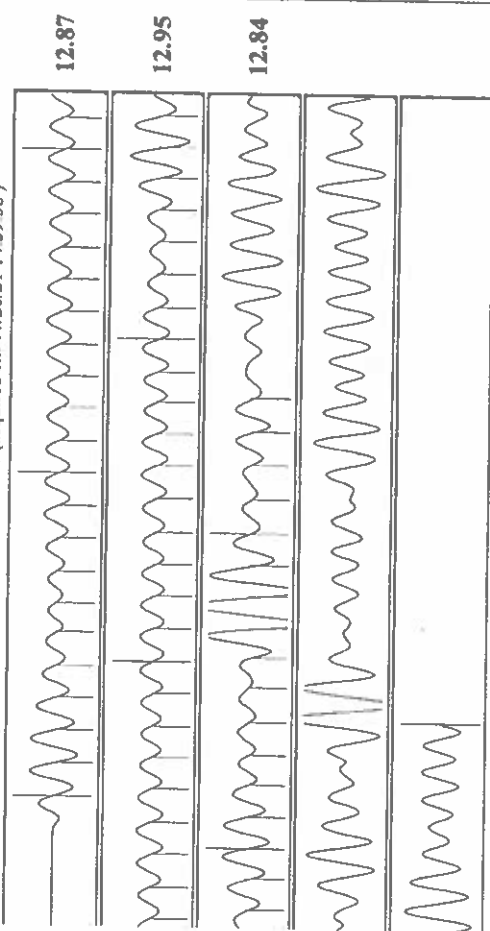
Acoustic Test

Group: CMX Well: Davis Ranch 2-11 (acquired on: 11/28/21 14:59:58)



Change in Pressure -0.09 psi  
 Change in Time 2.00 min  
 PT8496 Range  
 0 - 7 psi

Group: CMX Well: Davis Ranch 2-11 (acquired on: 11/28/21 14:59:58)



Acoustic Velocity 817.405 ft/s  
 Joints Per Second 12.8928 Jts/sec  
 Depth to liquid level 3473.97 ft  
 Automatic Collar Count Yes  
 Joints counted 64  
 Joints to liquid level 109.589  
 Filter Width 10.8535  
 Time to 1st Collar 0.312  
 14.8535  
 5.276

March 31, 2022

Douglas H McGinness II  
CMX, Inc.  
9330 E CENTRAL SUITE 300  
WICHITA, KS 67206-6610

Re: Temporary Abandonment  
API 15-007-04629-00-00  
DAVIS RANCH 2-11  
SE/4 Sec.11-35S-15W  
Barber County, Kansas

Dear Douglas H McGinness II:

"Your temporary abandonment (TA) application for the well listed above has been approved. In accordance with K.A.R. 82-3-111 the TA status of this well will expire 03/31/2023.

- \* If you return this well to service or plug it, please notify the District Office.
- \* If you sell this well you are required to file a Transfer of Operator form, T-1.
- \* If the well will remain temporarily abandoned, you must submit a new TA application, CP-111, before 03/31/2023.

You may contact me at the number above if you have questions.

Very truly yours,

Michael Maier"