

KANSAS CORPORATION COMMISSION
OIL & GAS CONSERVATION DIVISION

TEMPORARY ABANDONMENT WELL APPLICATION

OPERATOR: License#
Name:
Address 1:
Address 2:
City: State: Zip:
Contact Person:
Phone:
Contact Person Email:
Field Contact Person:
Field Contact Person Phone:

API No. 15-
Spot Description:
Sec. Twp. S. R.
GPS Location: Lat: Long:
Datum: NAD27 NAD83 WGS84
County: Elevation:
Lease Name: Well #:
Well Type: Oil Gas OG WSW Other:
SWD Permit #: ENHR Permit #:
Gas Storage Permit #:
Spud Date: Date Shut-In:

Table with 7 columns: Conductor, Surface, Production, Intermediate, Liner, Tubing. Rows include Size, Setting Depth, Amount of Cement, Top of Cement, Bottom of Cement.

Casing Fluid Level from Surface: How Determined? Date:
Casing Squeeze(s): to w / sacks of cement, to w / sacks of cement. Date:
Do you have a valid Oil & Gas Lease? Yes No
Depth and Type: Junk in Hole at Tools in Hole at Casing Leaks: Yes No Depth of casing leak(s):
Type Completion: ALT. I ALT. II Depth of: DV Tool: w / sacks of cement Port Collar: w / sack of cement
Packer Type: Size: Inch Set at: Feet
Total Depth: Plug Back Depth: Plug Back Method:

Geological Date:

Table with 4 columns: Formation Name, Formation Top, Formation Base, Completion Information. Rows 1 and 2.

UNDER PENALTY OF PERJURY I HEREBY ATTEST THAT THE INFORMATION CONTAINED HEREIN IS TRUE AND CORRECT TO THE BEST OF MY KNOWLEDGE

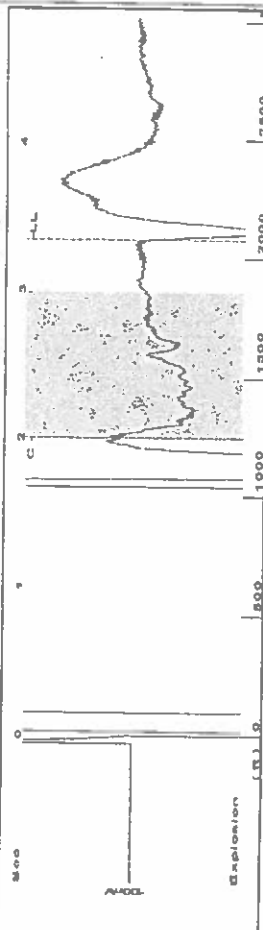
Submitted Electronically

Do NOT Write in This Space - KCC USE ONLY
Date Tested: Results: Date Plugged: Date Repaired: Date Put Back in Service:
Review Completed by: Comments:
TA Approved: Yes Denied Date:

Mail to the Appropriate KCC Conservation Office:

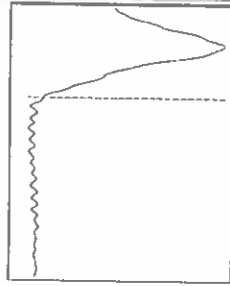
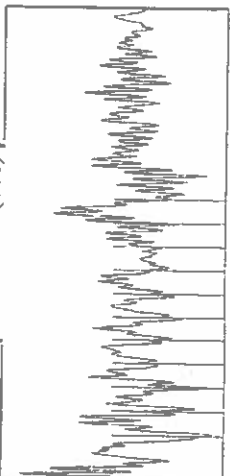
Table with 3 columns: District Office #, Address, Phone. Rows 1-4.

Group: CMX Well: Hendrix #1 (acquired on: 11/28/21 12:59:06)



Filter Type High Pass Automatic Collar Count Yes Time 3.336 sec
 Manual Acoustic Velocity 1268 f/s Manual JTS/sec 20 Joints 65.4873 Jts
 Depth 2075.95 ft

2.0 to 3.0 (Sec)



Analysis Method: Automatic

Group: CMX Well: Hendrix #1 (acquired on: 11/28/21 12:59:06)

Production	Potential	Casing Pressure	Static
Current	0.0	0.0	Oil Column Height
Oil	BBL/D	BBL/D	MD 0 ft
Water	BBL/D	Casing Pressure Buildup	Water Column Height
Gas	Mscf/D	psi	MD 2924 ft
		psi	Static BHP
		min	1330.2 psi (g)
IPR Method	Vogel	Gas/Liquid Interface Pressure	
PBHP/SBHP	0.0	0.8	
Production Efficiency		psi (g)	
Oil 40 deg-API			
Water 1.05 Sp.Gr.H2O			
Gas 0.74 Sp.Gr.AIR			
Acoustic Velocity	1244.57 ft/s	Liquid Level Depth	
		2075.95 ft	
		Pump Intake Depth	
		5000.00 ft	
		Formation Depth	
		5000.00 ft	

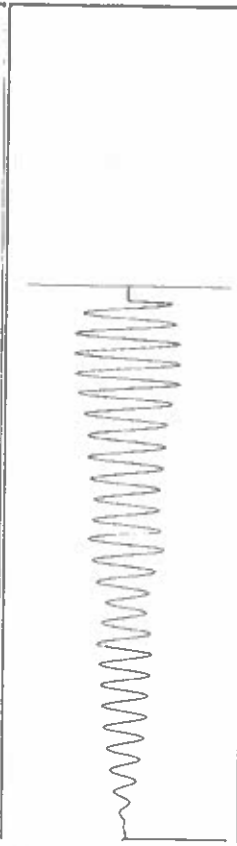
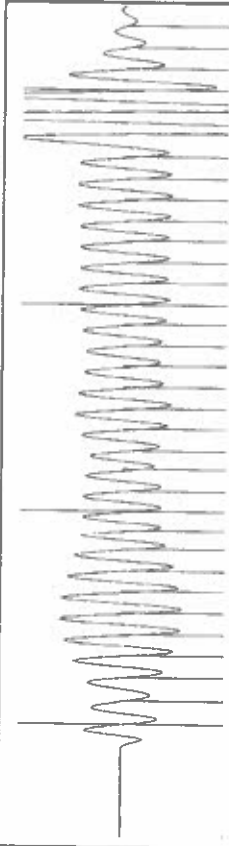
Acoustic Test

Group: CMX Well: Hendrix #1 (acquired on: 11/28/21 12:59:06)

NO PRESSURE DATA AVAILABLE

Change in Pressure 0.00 psi PT8496 Range
 Change in Time 0.00 min 0 - ? psi

Group: CMX Well: Hendrix #1 (acquired on: 11/28/21 12:59:06)



Acoustic Velocity 1244.57 ft/s Joints counted 34
 Joints Per Second 19.6305 Jts/sec Joints to liquid level 65.4873
 Depth to liquid level 2075.95 ft Filter Width 18
 Automatic Collar Count Yes Time to 1st Collar 0.272 22
 2.004

March 31, 2022

Douglas H McGinness II
CMX, Inc.
9330 E CENTRAL SUITE 300
WICHITA, KS 67206-6610

Re: Temporary Abandonment
API 15-007-22338-00-00
HENDRIX 1
SE/4 Sec.05-34S-13W
Barber County, Kansas

Dear Douglas H McGinness II:

"Your temporary abandonment (TA) application for the well listed above has been approved. In accordance with K.A.R. 82-3-111 the TA status of this well will expire 03/31/2023.

- * If you return this well to service or plug it, please notify the District Office.
- * If you sell this well you are required to file a Transfer of Operator form, T-1.
- * If the well will remain temporarily abandoned, you must submit a new TA application, CP-111, before 03/31/2023.

You may contact me at the number above if you have questions.

Very truly yours,

Michael Maier"