

KANSAS CORPORATION COMMISSION
OIL & GAS CONSERVATION DIVISION

TEMPORARY ABANDONMENT WELL APPLICATION

OPERATOR: License#
Name:
Address 1:
Address 2:
City: State: Zip:
Contact Person:
Phone:
Contact Person Email:
Field Contact Person:
Field Contact Person Phone:

API No. 15-
Spot Description:
Sec. Twp. S. R.
GPS Location: Lat: Long:
Datum: NAD27 NAD83 WGS84
County: Elevation:
Lease Name: Well #:
Well Type: Oil Gas OG WSW Other:
SWD Permit #: ENHR Permit #:
Gas Storage Permit #:
Spud Date: Date Shut-In:

Table with 7 columns: Conductor, Surface, Production, Intermediate, Liner, Tubing. Rows include Size, Setting Depth, Amount of Cement, Top of Cement, Bottom of Cement.

Casing Fluid Level from Surface: How Determined? Date:
Casing Squeeze(s): to w / sacks of cement, to w / sacks of cement. Date:
Do you have a valid Oil & Gas Lease? Yes No
Depth and Type: Junk in Hole at Tools in Hole at Casing Leaks: Yes No Depth of casing leak(s):
Type Completion: ALT. I ALT. II Depth of: DV Tool: w / sacks of cement Port Collar: w / sack of cement
Packer Type: Size: Inch Set at: Feet
Total Depth: Plug Back Depth: Plug Back Method:

Geological Date:

Table with 4 columns: Formation Name, Formation Top, Formation Base, Completion Information. Rows 1 and 2.

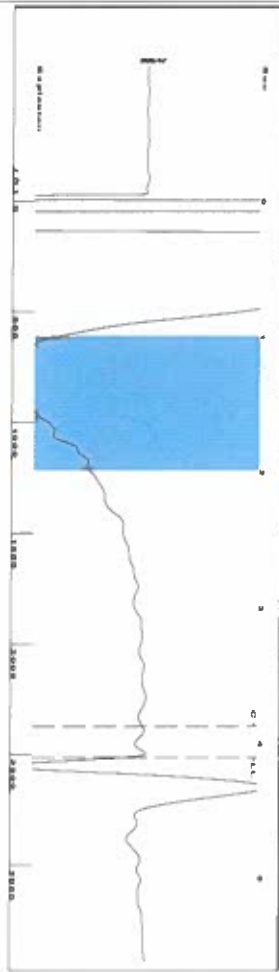
UNDER PENALTY OF PERJURY I HEREBY ATTEST THAT THE INFORMATION CONTAINED HEREIN IS TRUE AND CORRECT TO THE BEST OF MY KNOWLEDGE

Submitted Electronically

Do NOT Write in This Space - KCC USE ONLY
Date Tested: Results: Date Plugged: Date Repaired: Date Put Back in Service:
Review Completed by: Comments:
TA Approved: Yes Denied Date:

Mail to the Appropriate KCC Conservation Office:

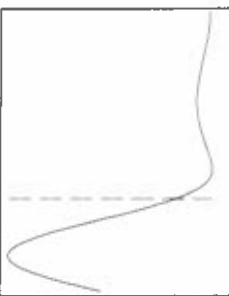
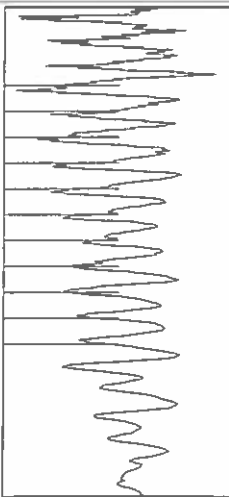
Table with 3 columns: District Office #, Address, Phone. Rows 1-4.



Filter Type High Pass Automatic Collar Count Yes
 Manual Acoustic Velo 1163.77 n/s Manual JTS/sec 18.8679

Time 4.111 sec
 Joints 81.531 Jts
 Depth 2514.42 ft

1.0 to 2.0 (Sec)



Analysis Method: Automatic

Production	Potential	Casing Pressure	Producing
Current	Oil - * - BBL/D	17.3 psi (g)	Annular
Water - * - BBL/D	Gas - * - Mscf/D	Casing Pressure Buildup	Gas Flow
Gas - * -		0.019 psi	% Liquid
IPR Method	Vogel	1.00 min	1 Mscf/D
PBHP/SBHP	Production Efficiency	Gas/Liquid Interface Pressure	
	0.0	19.4 psi (g)	
Oil 40 deg API		Liquid Level Depth	
Water 1.05 Sp.Gr. 1120		2514.42 ft	
Gas 0.78 Sp.Gr. AIR		Pump Intake Depth	
Acoustic Velocity		2672.00 ft	
		Formation Depth	
		2810.00 ft	

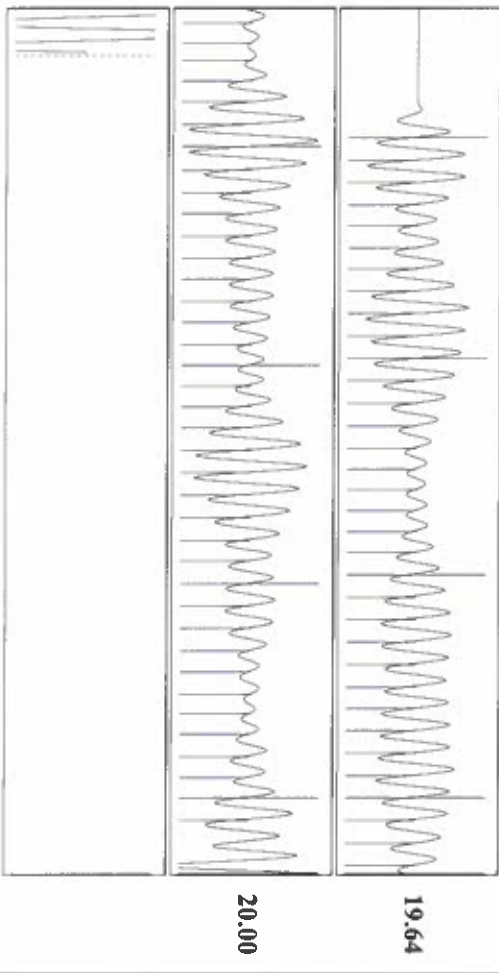


Formation Submergence	Total Gaseous Liquid Column HT (TVD)	Equivalent Gas Free Liquid HT (TVD)
158 ft	158 ft	
3/29/22		

Pump Intake	Producing BHP	Static BHP
73.0 psi (g)	135.8 psi (g)	



Change in Pressure 0.02 psi
 Change in Time 1.00 min
 PT16716 Range 0 - 2 psi



Acoustic Velocity	Joints Per Second	Depth to liquid level	Automatic Collar Count
1223.26 ft/s	19.8324 jts/sec	2514.42 ft	Yes

March 31, 2022

Katherine McClurkan
Merit Energy Company, LLC
13727 Noel Road, Suite 1200
Dallas, TX 75240

Re: Temporary Abandonment
API 15-081-00296-00-00
Garrison A 1
NW/4 Sec.21-27S-34W
Haskell County, Kansas

Dear Katherine McClurkan:

"Your temporary abandonment (TA) application for the well listed above has been approved. In accordance with K.A.R. 82-3-111 the TA status of this well will expire 03/31/2023.

- * If you return this well to service or plug it, please notify the District Office.
- * If you sell this well you are required to file a Transfer of Operator form, T-1.
- * If the well will remain temporarily abandoned, you must submit a new TA application, CP-111, before 03/31/2023.

You may contact me at the number above if you have questions.

Very truly yours,

Michael Maier"