

KANSAS CORPORATION COMMISSION
OIL & GAS CONSERVATION DIVISION

TEMPORARY ABANDONMENT WELL APPLICATION

OPERATOR: License#
Name:
Address 1:
Address 2:
City: State: Zip:
Contact Person:
Phone:
Contact Person Email:
Field Contact Person:
Field Contact Person Phone:

API No. 15-
Spot Description:
Sec. Twp. S. R.
feet from N / S Line of Section
feet from E / W Line of Section
GPS Location: Lat: , Long:
Datum: NAD27 NAD83 WGS84
County: Elevation: GL KB
Lease Name: Well #:
Well Type: Oil Gas OG WSW Other:
SWD Permit #: ENHR Permit #:
Gas Storage Permit #:
Spud Date: Date Shut-In:

Table with 7 columns: Conductor, Surface, Production, Intermediate, Liner, Tubing. Rows include Size, Setting Depth, Amount of Cement, Top of Cement, Bottom of Cement.

Casing Fluid Level from Surface: How Determined? Date:
Casing Squeeze(s): to w / sacks of cement, to w / sacks of cement. Date:
Do you have a valid Oil & Gas Lease? Yes No
Depth and Type: Junk in Hole at Tools in Hole at Casing Leaks: Yes No Depth of casing leak(s):
Type Completion: ALT. I ALT. II Depth of: DV Tool: w / sacks of cement Port Collar: w / sack of cement
Packer Type: Size: Inch Set at: Feet
Total Depth: Plug Back Depth: Plug Back Method:

Geological Data:

Table with 4 columns: Formation Name, Formation Top, Formation Base, Completion Information. Rows 1 and 2.

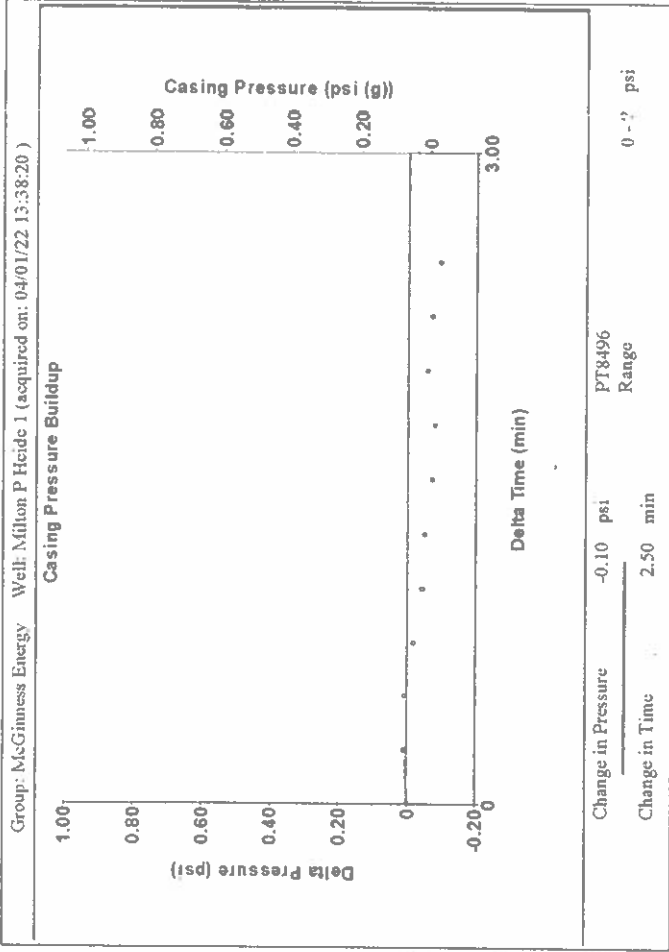
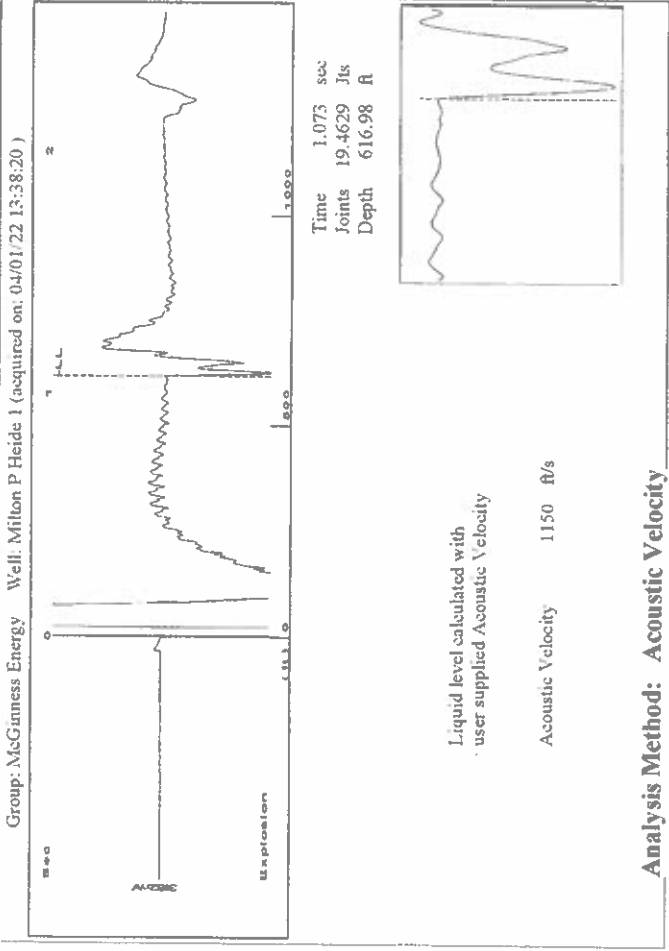
UNDER PENALTY OF PERJURY I HEREBY ATTEST THAT THE INFORMATION CONTAINED HEREIN IS TRUE AND CORRECT TO THE BEST OF MY KNOWLEDGE

Submitted Electronically

Do NOT Write in This Space - KCC USE ONLY
Date Tested: Results: Date Plugged: Date Repaired: Date Put Back in Service:
Review Completed by: Comments:
TA Approved: Yes Denied Date:

Mail to the Appropriate KCC Conservation Office:

Table with 3 columns: District Office, Address, Phone. Rows for District Office #1, #2, #3, #4.



Group: McGinness Energy Well: Milton P Heide 1 (acquired on: 04/01/22 13:38:20)

Production	Potential	Casing Pressure	Static
Oil -*- BBL/D	0.1 psi (g)	0.1 psi (g)	Oil Column Height
Water -*- BBL/D	Casing Pressure Buildup	-0.096 psi	MD 0 ft
Gas -*- Mscf/D	2.50 min	2.50 min	Water Column Height
IPR Method Vogel	Gas/Liquid Interface Pressure	0.3 psi (g)	MD 4383 ft
PBHP/SBHP -*-	Liquid Level Depth	616.98 ft	Static BHP
Production Efficiency 0.0	Pump Intake Depth	5000.00 ft	1993.1 psi (g)
Oil 40 deg-API	Formation Depth	5000.00 ft	
Water 1.05 Sp.Gr.H2O			
Gas 0.85 Sp.Gr.AIR			
Acoustic Velocity 1150 ft/s			

Acoustic Test

Entered Acoustic Velocity for Liquid Level depth determination

April 07, 2022

Douglas H McGinness II
L & J Oil Properties, Inc.
9330 E Central Ave, Suite 300
WICHITA, KS 67206-6628

Re: Temporary Abandonment
API 15-007-21568-00-00
MILTON P HEIDE 1
NW/4 Sec.18-32S-13W
Barber County, Kansas

Dear Douglas H McGinness II:

"Your temporary abandonment (TA) application for the well listed above has been approved. In accordance with K.A.R. 82-3-111 the TA status of this well will expire 04/07/2023.

- * If you return this well to service or plug it, please notify the District Office.
- * If you sell this well you are required to file a Transfer of Operator form, T-1.
- * If the well will remain temporarily abandoned, you must submit a new TA application, CP-111, before 04/07/2023.

You may contact me at the number above if you have questions.

Very truly yours,

Michael Maier"