

KANSAS CORPORATION COMMISSION
OIL & GAS CONSERVATION DIVISION

TEMPORARY ABANDONMENT WELL APPLICATION

OPERATOR: License#
Name:
Address 1:
Address 2:
City: State: Zip:
Contact Person:
Phone:
Contact Person Email:
Field Contact Person:
Field Contact Person Phone:

API No. 15-
Spot Description:
Sec. Twp. S. R.
GPS Location: Lat: Long:
Datum: NAD27 NAD83 WGS84
County: Elevation:
Lease Name: Well #:
Well Type: Oil Gas OG WSW Other:
SWD Permit #: ENHR Permit #:
Gas Storage Permit #:
Spud Date: Date Shut-In:

Table with 7 columns: Conductor, Surface, Production, Intermediate, Liner, Tubing. Rows include Size, Setting Depth, Amount of Cement, Top of Cement, Bottom of Cement.

Casing Fluid Level from Surface: How Determined? Date:
Casing Squeeze(s): to w / sacks of cement, to w / sacks of cement. Date:
Do you have a valid Oil & Gas Lease? Yes No
Depth and Type: Junk in Hole at Tools in Hole at Casing Leaks: Yes No Depth of casing leak(s):
Type Completion: ALT. I ALT. II Depth of: DV Tool: w / sacks of cement Port Collar: w / sack of cement
Packer Type: Size: Inch Set at: Feet
Total Depth: Plug Back Depth: Plug Back Method:

Geological Date:

Table with 4 columns: Formation Name, Formation Top, Formation Base, Completion Information. Rows 1 and 2.

UNDER PENALTY OF PERJURY I HEREBY ATTEST THAT THE INFORMATION CONTAINED HEREIN IS TRUE AND CORRECT TO THE BEST OF MY KNOWLEDGE

Submitted Electronically

Do NOT Write in This Space - KCC USE ONLY
Date Tested: Results: Date Plugged: Date Repaired: Date Put Back in Service:
Review Completed by: Comments:
TA Approved: Yes Denied Date:

Mail to the Appropriate KCC Conservation Office:

Table with 3 columns: District Office, Address, Phone. Rows for District Office #1, #2, #3, #4.

Liquid Level

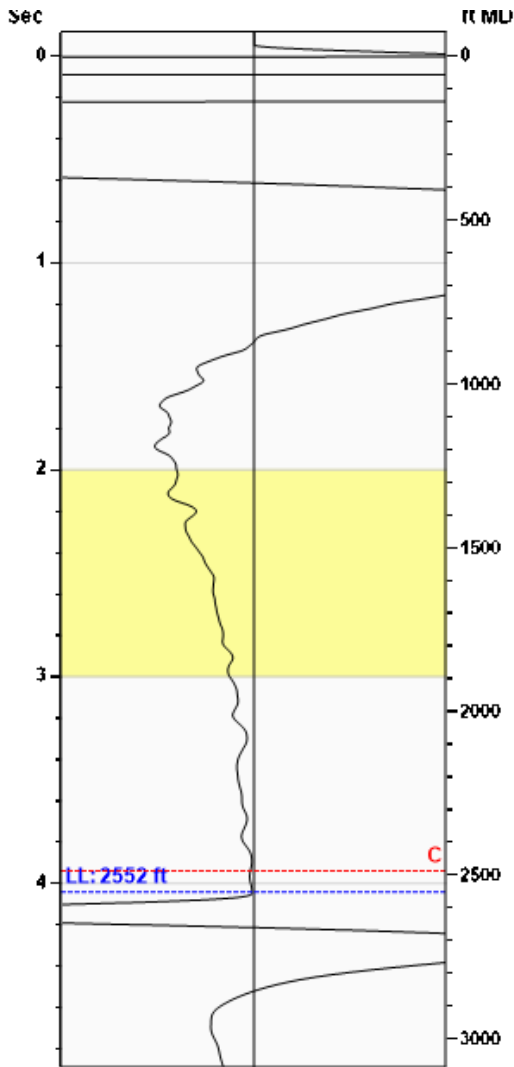
2552 ft MD

Fluid Above Pump

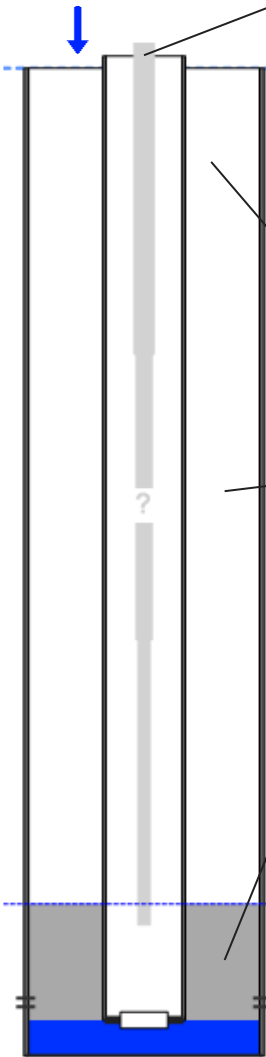
355 ft TVD

Equivalent Gas Free Above Pump

345 ft TVD



Gun - WRFG753



Production

Date Entered	03/30/22		
	Current	Potential	
Oil	**	**	BBL/D
Water	**	**	BBL/D
Gas	**	**	Mscf/D
IPR Method	Vogel		
PBHP/SBHP	-0.00		
Producing Efficiency	0.00%		

Casing Pressure

Pressure	2.9 psi (g)
----------	-------------

Annular Gas Flow

Gas Flow	0.9 Mscf/D
----------	------------

Fluid Properties

% Liquid Above Pump	97.14%
% Liquid Below Pump	**

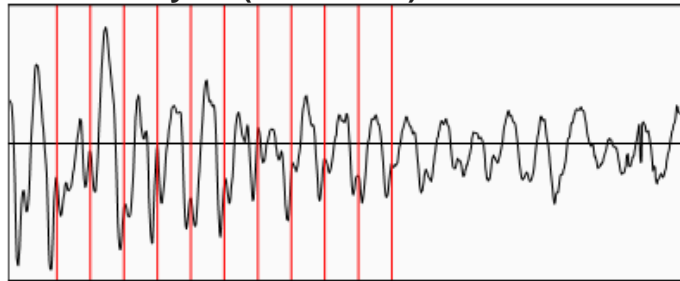
Depths

Pump Intake Depth	2907 ft
Formation Depth	2880 ft

Wellbore Pressures

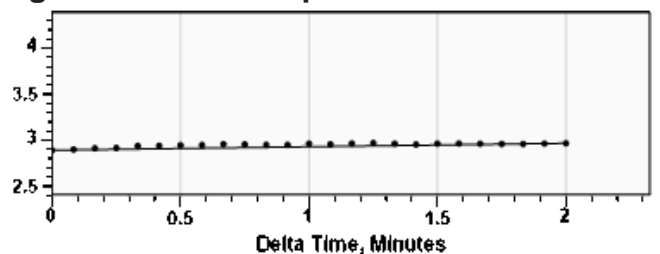
PIP	121.0 psi (g)
PBHP	111.9 psi (g)
SBHP	**
Gas/Liq Interface	4.0 psi (g)

Collar Analysis (Automatic)



Average Acoustic Velocity	1263 ft/s
Average Joints Per Sec.	19.99 Jts/sec
Joints To Liquid	80.78 Jts

Casing Pressure Buildup



Casing Pressure	2.9 psi (g)
Buildup	0.1 psi (g)
Buildup Time	2 min 0 sec
Gas Gravity from Collar Analysis (Automatic)	0.7405 Air = 1

Comments and Recommendations

Echometer Company
 5001 Ditto Lane
 Wichita Falls, TX 76302
 (940) 767-4334
 info@echometer.com

Conservation Division
District Office No. 1
210 E. Frontview, Suite A
Dodge City, KS 67801



Phone: 620-682-7933
<http://kcc.ks.gov/>

Dwight D. Keen, Chair
Susan K. Duffy, Commissioner
Andrew J. French, Commissioner

Laura Kelly, Governor

April 07, 2022

Katherine McClurkan
Merit Energy Company, LLC
13727 Noel Road, Suite 1200
Dallas, TX 75240-7362

Re: Temporary Abandonment
API 15-055-21311-00-00
McWilliams G 3
SE/4 Sec.16-24S-33W
Finney County, Kansas

Dear Katherine McClurkan:

"Your temporary abandonment (TA) application for the well listed above has been approved. In accordance with K.A.R. 82-3-111 the TA status of this well will expire 04/07/2023.

- * If you return this well to service or plug it, please notify the District Office.
- * If you sell this well you are required to file a Transfer of Operator form, T-1.
- * If the well will remain temporarily abandoned, you must submit a new TA application, CP-111, before 04/07/2023.

You may contact me at the number above if you have questions.

Very truly yours,

Michael Maier"