

KANSAS CORPORATION COMMISSION
OIL & GAS CONSERVATION DIVISION

TEMPORARY ABANDONMENT WELL APPLICATION

OPERATOR: License#
Name:
Address 1:
Address 2:
City: State: Zip:
Contact Person:
Phone:
Contact Person Email:
Field Contact Person:
Field Contact Person Phone:

API No. 15-
Spot Description:
Sec. Twp. S. R.
GPS Location: Lat: Long:
Datum: NAD27 NAD83 WGS84
County: Elevation:
Lease Name: Well #:
Well Type: Oil Gas OG WSW Other:
SWD Permit #: ENHR Permit #:
Gas Storage Permit #:
Spud Date: Date Shut-In:

Table with 7 columns: Conductor, Surface, Production, Intermediate, Liner, Tubing. Rows include Size, Setting Depth, Amount of Cement, Top of Cement, Bottom of Cement.

Casing Fluid Level from Surface: How Determined? Date:
Casing Squeeze(s): to w / sacks of cement, to w / sacks of cement. Date:
Do you have a valid Oil & Gas Lease? Yes No
Depth and Type: Junk in Hole at Tools in Hole at Casing Leaks: Yes No Depth of casing leak(s):
Type Completion: ALT. I ALT. II Depth of: DV Tool: w / sacks of cement Port Collar: w / sack of cement
Packer Type: Size: Inch Set at: Feet
Total Depth: Plug Back Depth: Plug Back Method:

Geological Data:

Table with 4 columns: Formation Name, Formation Top, Formation Base, Completion Information. Rows 1 and 2.

UNDER PENALTY OF PERJURY I HEREBY ATTEST THAT THE INFORMATION CONTAINED HEREIN IS TRUE AND CORRECT TO THE BEST OF MY KNOWLEDGE

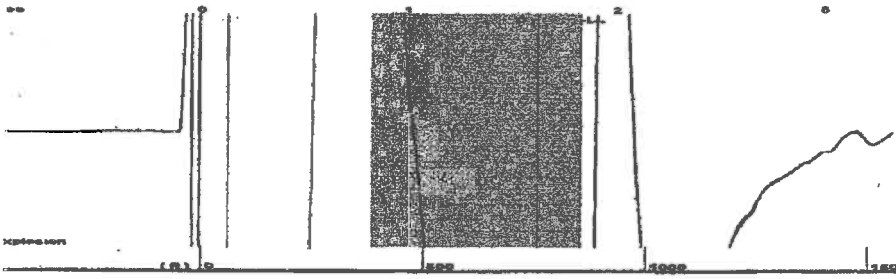
Submitted Electronically

Do NOT Write in This Space - KCC USE ONLY
Date Tested: Results: Date Plugged: Date Repaired: Date Put Back in Service:
Review Completed by: Comments:
TA Approved: Yes Denied Date:

Mail to the Appropriate KCC Conservation Office:

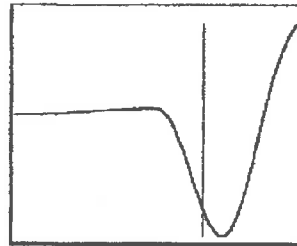
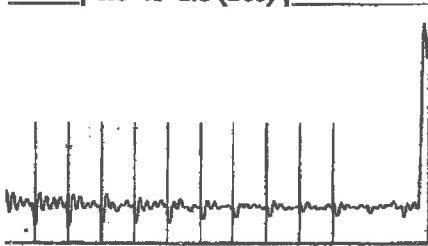
Table with 2 columns: Office Address, Phone. Rows for District Office #1, #2, #3, #4.

Group: Sawyer Well: Staats Trust 1-22 (acquired on: 04/05/22 10:42:22)



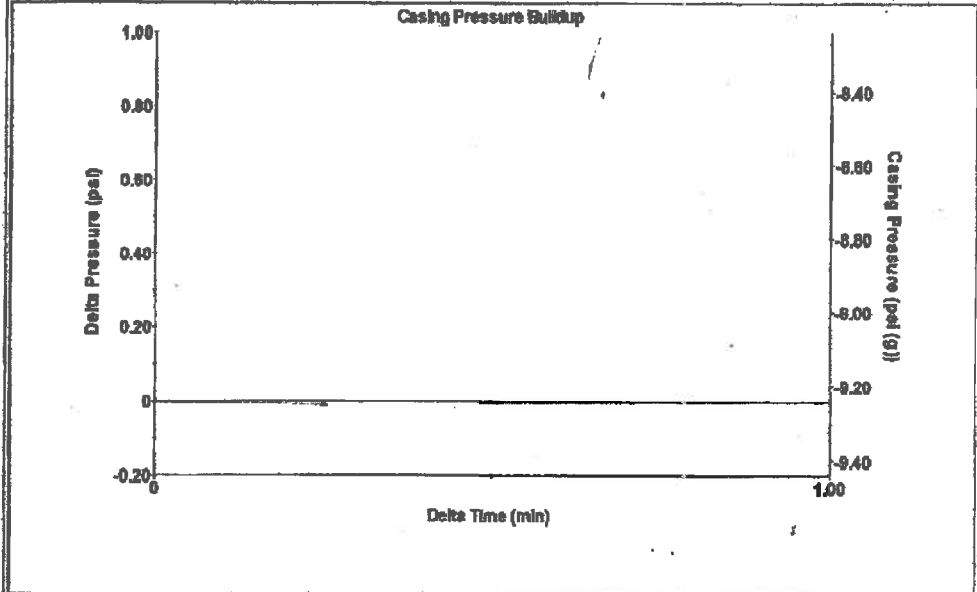
type High Pass Automatic Collar Count Yes Time 1.823 sec  
 Acoustic Vel 951.622 ft/s Manual JTS/sec 14.7493 Joints 26.4002 Jts  
 Depth 851.67 ft

[ 0.8 to 1.8 (Sec) ]



Analysis Method: Automatic

Group: Sawyer Well: Staats Trust 1-22 (acquired on: 04/05/22 10:42:22)



Change in Pressure -0.01 psi PT13440  
 Change in Time 0.25 min Range 0 - ? psi

Group: Sawyer Well: Staats Trust 1-22 (acquired on: 04/05/22 10:42:22)

Action Current Potential BBL/D BBL/D Mscf/D Method %SBHP Action Efficiency 40 deg API 1.05 Sp.Gr.H2O 1.03 Sp.Gr.AIR Acoustic Velocity 934.36 ft/s	Casing Pressure -9.2 psi (g) Casing Pressure Buildup -0.009 psi 0.25 min Gas/Liquid Interface Pressure -9.1 psi (g) Liquid Level Depth 851.67 ft Pump Intake Depth 3968.00 ft Formation Depth 3822.00 ft	Producing Annular Gas Flow 0 Mscf/D % Liquid 100 %
--	--	--

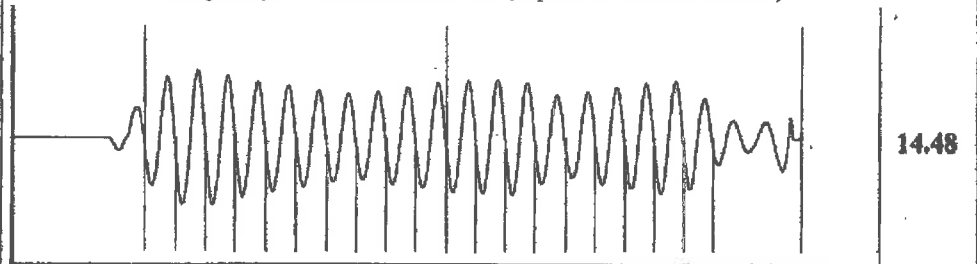


Action Submergence  
 Gaseous Liquid Column HT (TVD) 3116 ft  
 Equivalent Gas Free Liquid HT (TVD) 3116 ft

Static Test

Pump Intake  
 1009.6 psi (g)  
 Producing BHP  
 965.3 psi (g)  
 Static BHP  
 - \* - psi (g)

Group: Sawyer Well: Staats Trust 1-22 (acquired on: 04/05/22 10:42:22)



Acoustic Velocity	934.36 ft/s	Joints counted	19
Joints Per Second	14.4817 jts/sec	Joints to liquid level	26.4002
Depth to liquid level	851.669 ft	Filter Width	12.7493 16.7493
Automatic Collar Count	Yes	Time to 1st Collar	0.304 1.616

Staats Trus	2006	2006/06	37	0	0
		2006/07	859	0	0
		2006/08	1176	0	0
		2006/09	485	0	0
		2006/10	491	0	0
		2006/11	286	0	0
		2006/12	324	0	0
		Total	3658	0	0
	2007	2007/01	133.7	0	0
		2007/02	262.19	0	0
		2007/03	213.76	0	0
		2007/04	181.61	0	0
		2007/05	70.14	0	0
		2007/06	152.39	0	0
		2007/07	108.55	0	0
		2007/08	66.8	0	0
		2007/09	84.75	0	0
		2007/10	71.81	0	0
		2007/11	28.39	0	140.28
		2007/12	0	0	0
		Total	1374.09	0	140.28
	2008	2008/01	35.07	0	1885.43
		2008/02	101.87	0	2949.22
		2008/03	146.12	0	3436.86
		2008/04	103.54	0	2730.45
		2008/05	64.71	0	1649.96
		2008/06	65.13	0	2468.26
		2008/07	68.89	0	1900.46
		2008/08	70.14	0	2615.22
		2008/09	58.45	0	2727.11
		2008/10	57.61	0	2899.12
		2008/11	46.76	0	2052.43
		2008/12	0	0	0
		Total	818.29	0	27314.52
	2009	2009/01	0	0	0
		2009/02	0	0	0
		2009/03	0	0	0
		2009/04	0	0	0
		2009/05	0	0	0
		2009/06	0	0	0
		2009/07	0	0	0
		2009/08	0	0	0
		2009/09	0	0	0
		2009/10	0	0	0
		2009/11	0	0	0
		2009/12	0	0	43.42
		Total	0	0	43.42

2010	2010/01	0	0	0
	2010/02	0	0	0
	2010/03	0	0	0
	2010/04	0	0	0
	2010/05	0	0	0
	2010/06	0	0	0
	2010/07	0	0	0
	2010/08	0	0	0
	2010/09	0	0	0
	2010/10	0	0	0
	2010/11	0	0	0
	2010/12	0	0	0
	Total	0	0	0
2011	2011/01	0	0	0
	2011/02	0	0	0
	2011/03	0	0	0
	2011/04	0	0	0
	2011/05	0	0	0
	2011/06	0	0	0
	2011/07	0	0	0
	2011/08	0	0	0
	2011/09	0	0	0
	2011/10	0	0	0
	2011/11	0	0	0
	2011/12	0	0	0
	Total	0	0	0
2012	2012/01	0	0	105.21
	2012/02	225.45	0	1842.01
	2012/03	123.58	0	1584.83
	2012/04	101.87	0	1421.17
	2012/05	83.5	0	1249.16
	2012/06	65.97	0	1023.71
	2012/07	36.74	0	1025.38
	2012/08	0	0	0
	2012/09	0	0	0
	2012/10	0	0	0
	2012/11	13.36	0	108.55
	2012/12	45.09	0	419.17
	Total	695.56	0	8779.19
2013	2013/01	15.03	0	240.48
	2013/02	0	0	0
	2013/03	0	0	0
	2013/04	0	0	0
	2013/05	0	0	0
	2013/06	0	0	0
	2013/07	52.19	0	659.65
	2013/08	46.76	0	591.18

	2013/09	33.4	0	328.99
	2013/10	0	0	0
	2013/11	16.7	0	529.39
	2013/12	17.54	0	935.2
	Total	181.62	0	3284.89
2014	2014/01	11.69	0	693.05
	2014/02	0	0	0
	2014/03	0	0	0
	2014/04	96.86	0	320.64
	2014/05	70.14	0	591.18
	2014/06	35.07	0	452.57
	2014/07	18.37	0	422.51
	2014/08	13.36	0	512.69
	2014/09	37.57	0	551.1
	2014/10	31.73	0	467.6
	2014/11	28.39	0	465.93
	2014/12	21.71	0	387.44
	Total	364.89	0	4864.71
2015	2015/01	0	0	0
	2015/02	0	0	0
	2015/03	0	0	0
	2015/04	0	0	0
	2015/05	0	0	0
	2015/06	0	0	0
	2015/07	0	0	45.09
	2015/08	0	0	0
	2015/09	0	0	0
	2015/10	0	0	0
	2015/11	0	0	0
	2015/12	0	0	0
	Total	0	0	45.09
2016	2016/01	0	0	0
	2016/02	0	0	0
	2016/03	0	0	0
	2016/04	0	0	0
	2016/05	0	0	26.72
	2016/06	0	0	0
	2016/07	0	0	0
	2016/08	0	0	0
	2016/09	0	0	0
	2016/10	0	0	0
	2016/11	0	0	0
	2016/12	0	0	0
	Total	0	0	26.72

Conservation Division  
District Office No. 1  
210 E. Frontview, Suite A  
Dodge City, KS 67801



Phone: 620-682-7933  
<http://kcc.ks.gov/>

Dwight D. Keen, Chair  
Susan K. Duffy, Commissioner  
Andrew J. French, Commissioner

Laura Kelly, Governor

April 07, 2022

Loveness Mpanje  
F. G. Holl Company L.L.C.  
9431 E CENTRAL STE 100  
WICHITA, KS 67206-2563

Re: Temporary Abandonment  
API 15-007-23012-00-00  
STAATS TRUST 1-22  
NW/4 Sec.22-30S-14W  
Barber County, Kansas

Dear Loveness Mpanje:

"Your temporary abandonment (TA) application for the well listed above has been approved. In accordance with K.A.R. 82-3-111 the TA status of this well will expire 04/07/2023.

- \* If you return this well to service or plug it, please notify the District Office.
- \* If you sell this well you are required to file a Transfer of Operator form, T-1.
- \* If the well will remain temporarily abandoned, you must submit a new TA application, CP-111, before 04/07/2023.

You may contact me at the number above if you have questions.

Very truly yours,

Michael Maier"