

KANSAS CORPORATION COMMISSION
OIL & GAS CONSERVATION DIVISION

TEMPORARY ABANDONMENT WELL APPLICATION

OPERATOR: License#
Name:
Address 1:
Address 2:
City: State: Zip:
Contact Person:
Phone:
Contact Person Email:
Field Contact Person:
Field Contact Person Phone:

API No. 15-
Spot Description:
Sec. Twp. S. R.
GPS Location: Lat: Long:
Datum: NAD27 NAD83 WGS84
County: Elevation:
Lease Name: Well #:
Well Type: Oil Gas OG WSW Other:
SWD Permit #: ENHR Permit #:
Gas Storage Permit #:
Spud Date: Date Shut-In:

Table with 7 columns: Conductor, Surface, Production, Intermediate, Liner, Tubing. Rows include Size, Setting Depth, Amount of Cement, Top of Cement, Bottom of Cement.

Casing Fluid Level from Surface: How Determined? Date:
Casing Squeeze(s): to w / sacks of cement, to w / sacks of cement. Date:
Do you have a valid Oil & Gas Lease? Yes No
Depth and Type: Junk in Hole at Tools in Hole at Casing Leaks: Yes No Depth of casing leak(s):
Type Completion: ALT. I ALT. II Depth of: DV Tool: w / sacks of cement Port Collar: w / sack of cement
Packer Type: Size: Inch Set at: Feet
Total Depth: Plug Back Depth: Plug Back Method:

Geological Data:

Table with 4 columns: Formation Name, Formation Top, Formation Base, Completion Information. Rows 1 and 2.

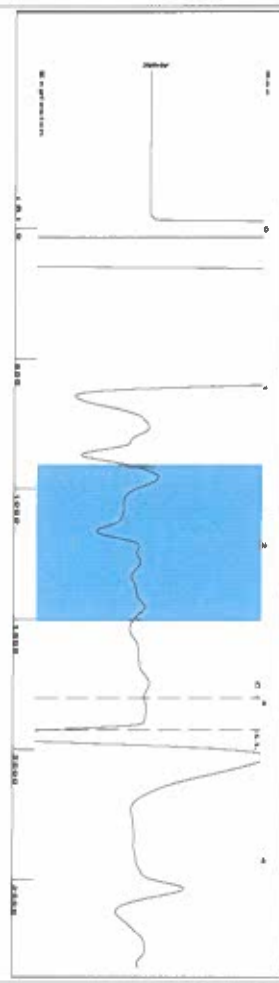
UNDER PENALTY OF PERJURY I HEREBY ATTEST THAT THE INFORMATION CONTAINED HEREIN IS TRUE AND CORRECT TO THE BEST OF MY KNOWLEDGE

Submitted Electronically

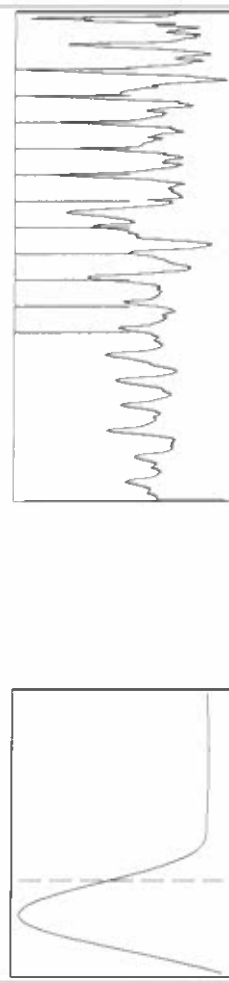
Do NOT Write in This Space - KCC USE ONLY
Date Tested: Results: Date Plugged: Date Repaired: Date Put Back in Service:
Review Completed by: Comments:
TA Approved: Yes Denied Date:

Mail to the Appropriate KCC Conservation Office:

Table with 3 columns: District Office #, Address, Phone. Includes map of Kansas with numbered districts 1-4.



Filter Type High Pass Automatic Collar Count Yes
 Manual Acoustic Velo 1178.44 ft/s Manual JTS/sec 18.5874
 Time 3.178 sec
 Joints 60.7691 JIS
 Depth 1926.38 ft



Analysis Method: Automatic

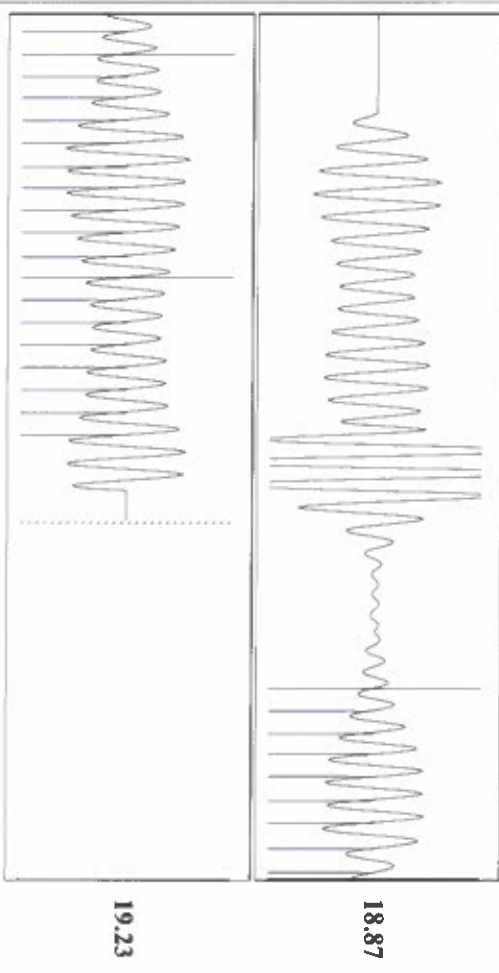
Group: SUBLETTE Well: Enterprises A-1 (acquired on: 04/06/22 12:48:51)

Production Current	Potential	Casing Pressure	Producing
Oil - * -	- * - BBL/D	0.2 psi (g)	Annular
Water - * -	- * - BBL/D	0.0 psi	Gas Flow
Gas - * -	- * - MiscFD	1.00 min	% Liquid
IPR Method	Vogel	Gas/Liquid Interface Pressure	1 MiscFD
PBHP/SBHP	- * -	1.0 psi (g)	% Liquid
Production Efficiency	0.0	Liquid Level Depth	98 %
Oil 40 deg API		1926.38 ft	
Water 1.05 Sp Gr: H2O		Pump Intake Depth	
Gas 0.77 Sp Gr: AIR		5413.00 ft	
Acoustic Velocity	1212.32 ft/s	Formation Depth	
		5350.00 ft	
Formation Submergence			Pump Intake
Total Gaseous Liquid Column HIT (TVDD)	3487 ft		1117.1 psi (g)
Equivalent Gas Free Liquid HIT (TVDD)	3413 ft		Producing BHP
			1097.9 psi (g)
			Static BHP
4/6/22			- * - psi (g)



Change in Pressure 0.04 psi PTT 6716
 Change in Time 1.00 min Range 0 - ? psi

Group: SUBLETTE Well: Enterprises A-1 (acquired on: 04/06/22 12:48:51)



Acoustic Velocity 1212.32 ft/s Joints counted 27
 Joints Per Second 19.1218 JIS/sec Joints to liquid level 60.7691
 Depth to liquid level 1926.38 ft Filter Width 16.5874
 Automatic Collar Count Yes Time to 1st Collar 1.56

April 13, 2022

Katherine McClurkan
Merit Energy Company, LLC
13727 Noel Road, Suite 1200
Dallas, TX 75240

Re: Temporary Abandonment
API 15-081-21746-00-01
Enterprises A 1
NE/4 Sec.21-30S-32W
Haskell County, Kansas

Dear Katherine McClurkan:

"Your temporary abandonment (TA) application for the well listed above has been approved. In accordance with K.A.R. 82-3-111 the TA status of this well will expire 04/13/2023.

- * If you return this well to service or plug it, please notify the District Office.
- * If you sell this well you are required to file a Transfer of Operator form, T-1.
- * If the well will remain temporarily abandoned, you must submit a new TA application, CP-111, before 04/13/2023.

You may contact me at the number above if you have questions.

Very truly yours,

Michael Maier"