

KANSAS CORPORATION COMMISSION
OIL & GAS CONSERVATION DIVISION

Form must be Typed
Form must be signed

TEMPORARY ABANDONMENT WELL APPLICATION

All blanks must be complete

OPERATOR: License#
Name:
Address 1:
Address 2:
City: State: Zip:
Contact Person:
Phone:
Contact Person Email:
Field Contact Person:
Field Contact Person Phone:

API No. 15-
Spot Description:
Sec. Twp. S. R.
GPS Location: Lat: Long:
Datum: NAD27 NAD83 WGS84
County: Elevation:
Lease Name: Well #:
Well Type: Oil Gas OG WSW Other:
SWD Permit #: ENHR Permit #:
Gas Storage Permit #:
Spud Date: Date Shut-In:

Table with 7 columns: Conductor, Surface, Production, Intermediate, Liner, Tubing. Rows include Size, Setting Depth, Amount of Cement, Top of Cement, Bottom of Cement.

Casing Fluid Level from Surface: How Determined? Date:
Casing Squeeze(s): to w / sacks of cement, to w / sacks of cement. Date:
Do you have a valid Oil & Gas Lease? Yes No
Depth and Type: Junk in Hole at Tools in Hole at Casing Leaks: Yes No Depth of casing leak(s):
Type Completion: ALT. I ALT. II Depth of: DV Tool: w / sacks of cement Port Collar: w / sack of cement
Packer Type: Size: Inch Set at: Feet
Total Depth: Plug Back Depth: Plug Back Method:

Geological Data:

Table with 4 columns: Formation Name, Formation Top, Formation Base, Completion Information. Rows 1 and 2.

UNDER PENALTY OF PERJURY I HEREBY ATTEST THAT THE INFORMATION CONTAINED HEREIN IS TRUE AND CORRECT TO THE BEST OF MY KNOWLEDGE

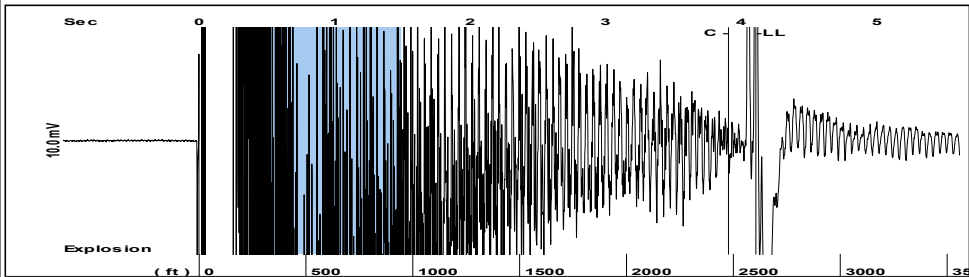
Submitted Electronically

Do NOT Write in This Space - KCC USE ONLY
Date Tested: Results: Date Plugged: Date Repaired: Date Put Back in Service:
Review Completed by: Comments:
TA Approved: Yes Denied Date:

Mail to the Appropriate KCC Conservation Office:

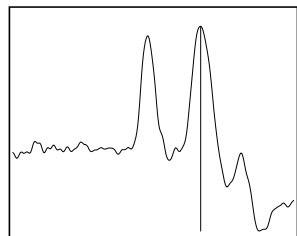
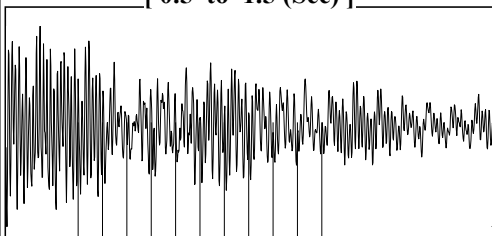
Table with 3 columns: District Office, Address, Phone. Rows for District Office #1, #2, #3, #4.

Group: MyWells Well: Birney Irwin # 1-30 (acquired on: 01/18/22 13:26:08)



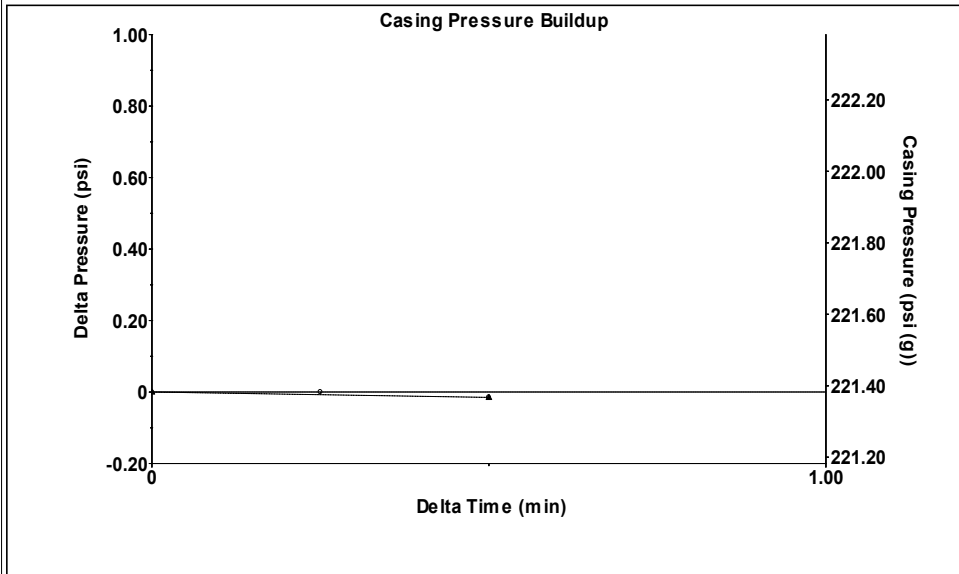
Filter Type High Pass Automatic Collar Count Yes Time 4.11 sec
 Manual Acoustic Velocity 1261.2 ft/s Manual JTS/sec 20 Joints 82.6074 Jts
 Depth 2604.61 ft

[0.5 to 1.5 (Sec)]



Analysis Method: Automatic

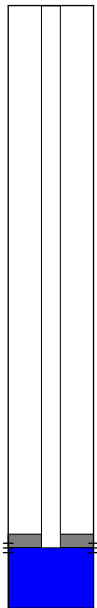
Group: MyWells Well: Birney Irwin # 1-30 (acquired on: 01/18/22 13:26:08)



Change in Pressure -0.02 psi PT 17384
 Change in Time 0.50 min Range 0 - ? psi

Group: MyWells Well: Birney Irwin # 1-30 (acquired on: 01/18/22 13:26:08)

Production	Potential	Casing Pressure
Current		221.4 psi (g)
Oil - *-	- *- BBL/D	Casing Pressure Buildup
Water - *-	- *- BBL/D	-0.015 psi
Gas - *-	- *- Mscf/D	0.50 min
		Gas/Liquid Interface Pressure
		237.0 psi (g)
IPR Method	Vogel	Liquid Level Depth
PBHP/SBHP	- *-	2604.61 ft
Production Efficiency	0.0	Pump Intake Depth
		2681.00 ft
		Formation Depth
		2681.00 ft



Producing

Annular Gas Flow 0 Mscf/D

% Liquid 100 %

Pump Intake 262.4 psi (g)

Producing BHP 262.4 psi (g)

Static BHP - *- psi (g)

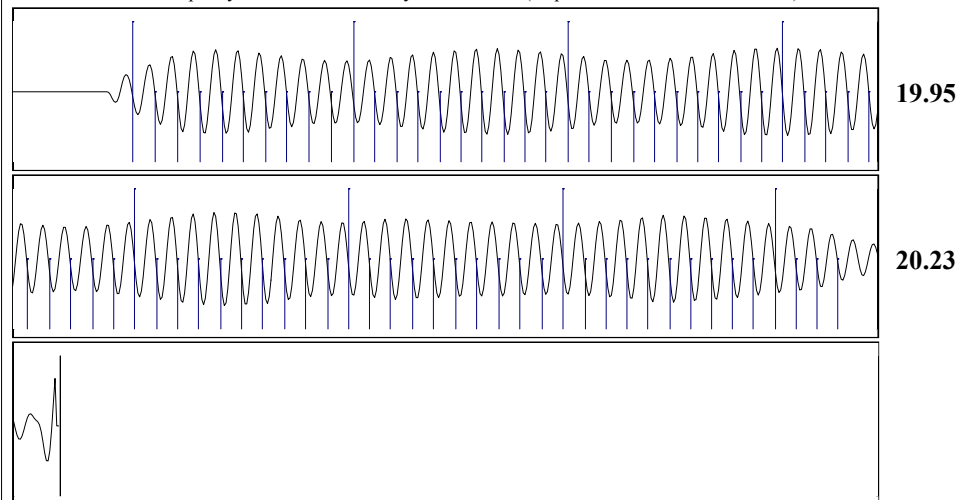
Formation Submergence

Total Gaseous Liquid Column HT (TVD) 76 ft

Equivalent Gas Free Liquid HT (TVD) 76 ft

Acoustic Test

Group: MyWells Well: Birney Irwin # 1-30 (acquired on: 01/18/22 13:26:08)



Acoustic Velocity	1267.45 ft/s	Joints counted	73
Joints Per Second	20.0991 jts/sec	Joints to liquid level	82.6074
Depth to liquid level	2604.61 ft	Filter Width	18
Automatic Collar Count	Yes	Time to 1st Collar	0.276

April 13, 2022

Melody C. Fletcher
Oil Producers, Inc. of Kansas
1710 N Waterfront Pkwy
WICHITA, KS 67206-6603

Re: Temporary Abandonment
API 15-175-21902-00-00
BIRNEY-IRWIN 1-30
NW/4 Sec.30-32S-31W
Seward County, Kansas

Dear Melody C. Fletcher:

"Your temporary abandonment (TA) application for the well listed above has been approved. In accordance with K.A.R. 82-3-111 the TA status of this well will expire 04/13/2023.

- * If you return this well to service or plug it, please notify the District Office.
- * If you sell this well you are required to file a Transfer of Operator form, T-1.
- * If the well will remain temporarily abandoned, you must submit a new TA application, CP-111, before 04/13/2023.

You may contact me at the number above if you have questions.

Very truly yours,

Michael Maier"