

KANSAS CORPORATION COMMISSION
OIL & GAS CONSERVATION DIVISION

TEMPORARY ABANDONMENT WELL APPLICATION

OPERATOR: License#
Name:
Address 1:
Address 2:
City: State: Zip:
Contact Person:
Phone:
Contact Person Email:
Field Contact Person:
Field Contact Person Phone:

API No. 15-
Spot Description:
Sec. Twp. S. R.
GPS Location: Lat, Long
Datum: NAD27, NAD83, WGS84
County: Elevation:
Lease Name: Well #:
Well Type: Oil, Gas, OG, WSW, Other
SWD Permit #: ENHR Permit #:
Gas Storage Permit #:
Spud Date: Date Shut-In:

Table with 7 columns: Conductor, Surface, Production, Intermediate, Liner, Tubing. Rows include Size, Setting Depth, Amount of Cement, Top of Cement, Bottom of Cement.

Casing Fluid Level from Surface: How Determined? Date:
Casing Squeeze(s): to w / sacks of cement, to w / sacks of cement. Date:
Do you have a valid Oil & Gas Lease? Yes No
Depth and Type: Junk in Hole at Tools in Hole at Casing Leaks: Yes No Depth of casing leak(s):
Type Completion: ALT. I ALT. II Depth of: DV Tool: w / sacks of cement Port Collar: w / sack of cement
Packer Type: Size: Inch Set at: Feet
Total Depth: Plug Back Depth: Plug Back Method:

Geological Data:

Table with 4 columns: Formation Name, Formation Top, Formation Base, Completion Information. Rows 1 and 2.

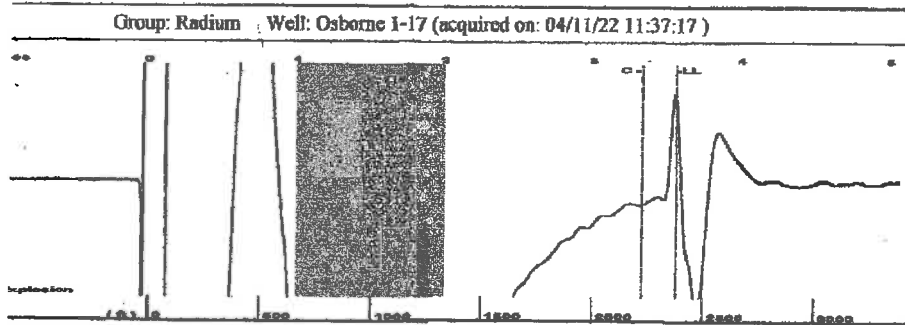
UNDER PENALTY OF PERJURY I HEREBY ATTEST THAT THE INFORMATION CONTAINED HEREIN IS TRUE AND CORRECT TO THE BEST OF MY KNOWLEDGE

Submitted Electronically

Do NOT Write in This Space - KCC USE ONLY
Date Tested: Results: Date Plugged: Date Repaired: Date Put Back in Service:
Review Completed by: Comments:
TA Approved: Yes Denied Date:

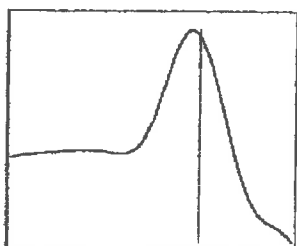
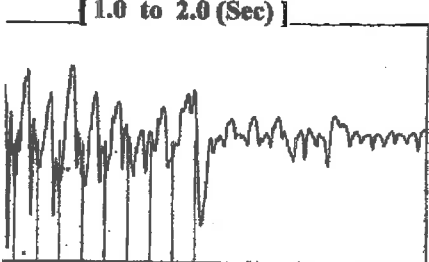
Mail to the Appropriate KCC Conservation Office:

Table with 2 columns: Office Address, Phone. Rows for District Office #1, #2, #3, #4.

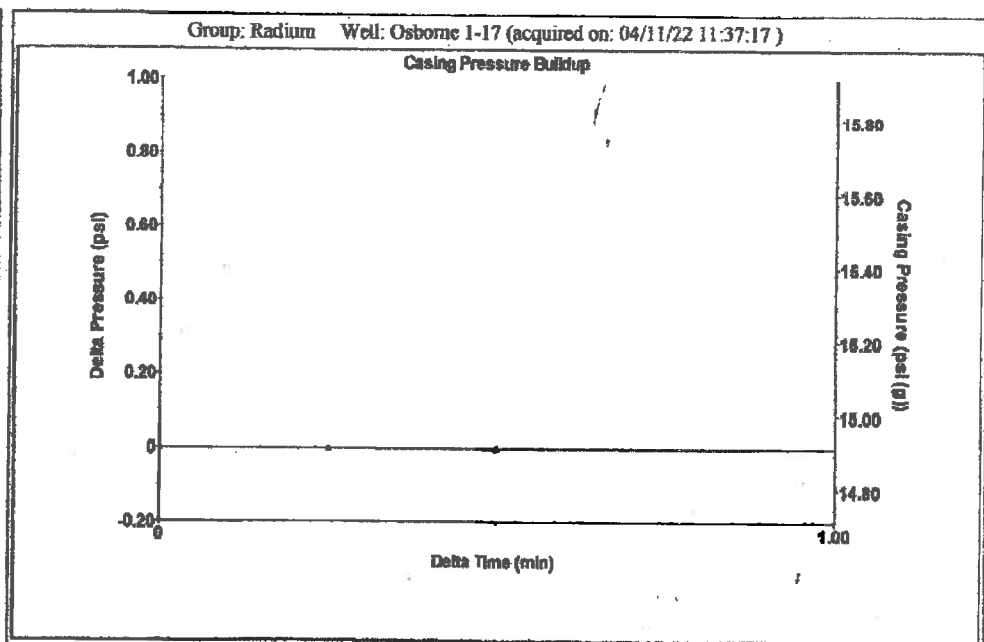


Group: Radium Well: Osborne 1-17 (acquired on: 04/11/22 11:37:17)

type	High Pass	Automatic Collar Count	Yes	Time	3.558 sec
Acoustic Velocity	1354.55 ft/s	Manual JTS/sec	21.645	Joints	75.9757 Jts
				Depth	2377.28 ft



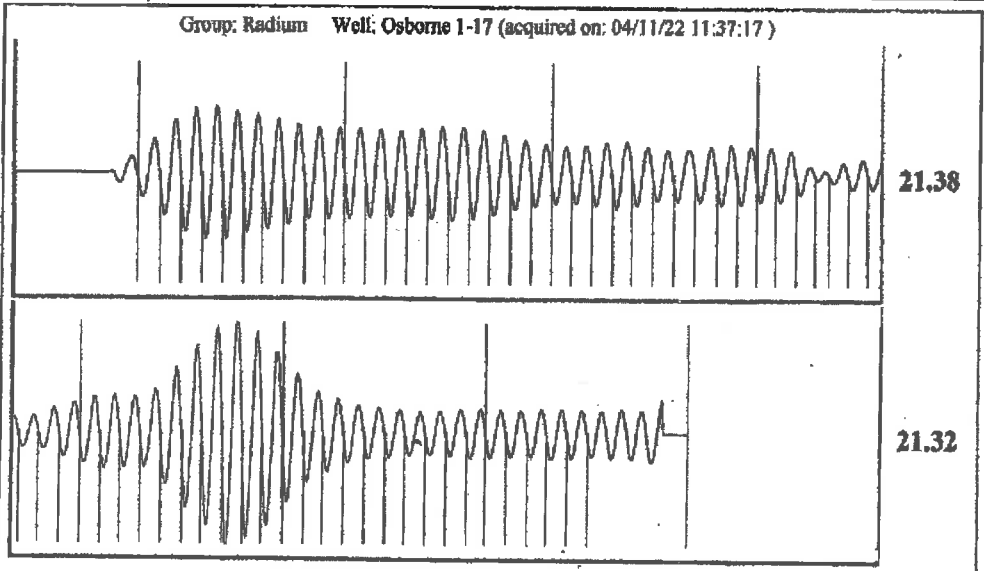
Analysis Method: Automatic



Change in Pressure	-0.00 psi	PT13440	
Change in Time	0.50 min	Range	0-? psi

Group: Radium Well: Osborne 1-17 (acquired on: 04/11/22 11:37:17)

ation	Potential	Casing Pressure	Producing
urreal	-*- BBL/D	14.9 psi (g)	
-*-	-*- BBL/D	Casing Pressure Buildup	
-*-	-*- Mscf/D	-0.003 psi	
		0.50 min	Annular Gas Flow
ethod	Vogel	Gas/Liquid Interface Pressure	0 Mscf/D
%SBHP	-*-	16.5 psi (g)	% Liquid
ction Efficiency	0.0		100 %
		Liquid Level Depth	
40 deg.API		2377.28 ft	
1.05 Sp.Gr.H2O		Pump Intake Depth	
0.68 Sp.Gr.AIR		2347.00 ft	
astic Velocity	1336.3 ft/s	Formation Depth	
		2387.00 ft	
ation Submergence			Pump Intake
Gaseous Liquid Column HT (TVD)	-*- ft		16.5 psi (g)
alent Gas Free Liquid HT (TVD)	-*- ft		Producing BHP
			21.0 psi (g)
astic Test			Static BHP
			-*- psi (g)



Acoustic Velocity	1336.3 ft/s	Joints counted	65
Joints Per Second	21.3535 jts/sec	Joints to liquid level	75.9757
Depth to liquid level	2377.28 ft	Filter Width	19.645 23.645
Automatic Collar Count	Yes	Time to 1st Collar	0.284 3.328

April 14, 2022

Loveness Mpanje
F. G. Holl Company L.L.C.
9431 E CENTRAL STE 100
WICHITA, KS 67206-2563

Re: Temporary Abandonment
API 15-185-23170-00-00
OSBORNE 1-17
NW/4 Sec.17-21S-14W
Stafford County, Kansas

Dear Loveness Mpanje:

"Your temporary abandonment (TA) application for the well listed above has been approved. In accordance with K.A.R. 82-3-111 the TA status of this well will expire 04/14/2023.

- * If you return this well to service or plug it, please notify the District Office.
- * If you sell this well you are required to file a Transfer of Operator form, T-1.
- * If the well will remain temporarily abandoned, you must submit a new TA application, CP-111, before 04/14/2023.

You may contact me at the number above if you have questions.

Very truly yours,

Michael Maier"