

KANSAS CORPORATION COMMISSION
OIL & GAS CONSERVATION DIVISION

Form must be Typed
Form must be signed

TEMPORARY ABANDONMENT WELL APPLICATION

All blanks must be complete

OPERATOR: License#
Name:
Address 1:
Address 2:
City: State: Zip:
Contact Person:
Phone:
Contact Person Email:
Field Contact Person:
Field Contact Person Phone:

API No. 15-
Spot Description:
Sec. Twp. S. R.
feet from N / S Line of Section
feet from E / W Line of Section
GPS Location: Lat: , Long:
Datum: NAD27 NAD83 WGS84
County: Elevation: GL KB
Lease Name: Well #:
Well Type: (check one) Oil Gas OG WSW Other:
SWD Permit #: ENHR Permit #:
Gas Storage Permit #:
Spud Date: Date Shut-In:

Table with 7 columns: Conductor, Surface, Production, Intermediate, Liner, Tubing. Rows include Size, Setting Depth, Amount of Cement, Top of Cement, Bottom of Cement.

Casing Fluid Level from Surface: How Determined? Date:
Casing Squeeze(s): to w / sacks of cement, to w / sacks of cement. Date:
Do you have a valid Oil & Gas Lease? Yes No
Depth and Type: Junk in Hole at Tools in Hole at Casing Leaks: Yes No Depth of casing leak(s):
Type Completion: ALT. I ALT. II Depth of: DV Tool: w / sacks of cement Port Collar: w / sack of cement
Packer Type: Size: Inch Set at: Feet
Total Depth: Plug Back Depth: Plug Back Method:

Geological Data:

Table with 4 columns: Formation Name, Formation Top, Formation Base, Completion Information. Rows 1 and 2.

UNDER PENALTY OF PERJURY I HEREBY ATTEST THAT THE INFORMATION CONTAINED HEREIN IS TRUE AND CORRECT TO THE BEST OF MY KNOWLEDGE

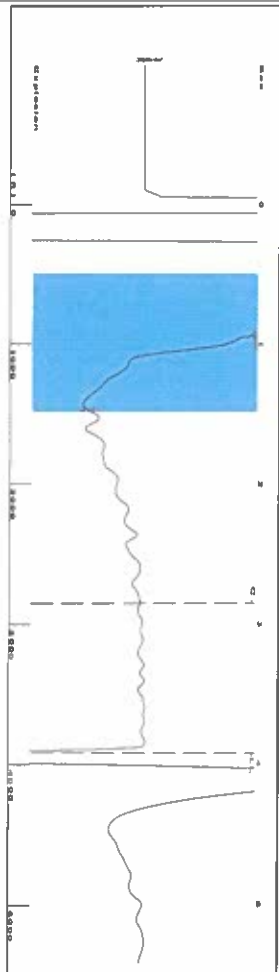
Submitted Electronically

Do NOT Write in This Space - KCC USE ONLY
Date Tested: Results: Date Plugged: Date Repaired: Date Put Back in Service:
Review Completed by: Comments:
TA Approved: Yes Denied Date:

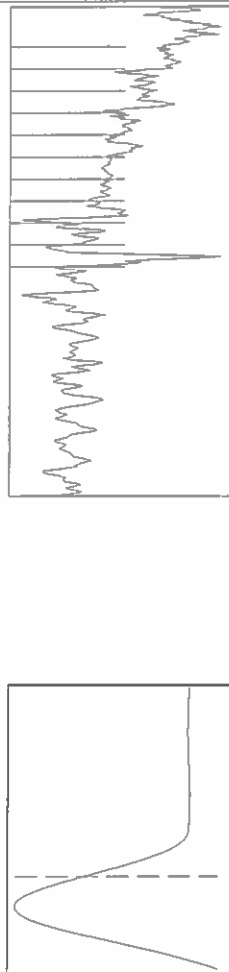
Mail to the Appropriate KCC Conservation Office:

Table with 2 columns: Office Address, Phone. Rows for District Office #1, #2, #3, #4.

Group: SUBLETTE Well: NLV 4-1 (acquired on: 04/13/22 13:22:10)



Filter Type High Pass Automatic Collar Count Yes
 Manual Acoustic Velocity 2000 f/s Manual JTS/sec 22.2222
 Time 3.933 sec
 Joints 87.0586 JIS
 Depth 3917.64 ft

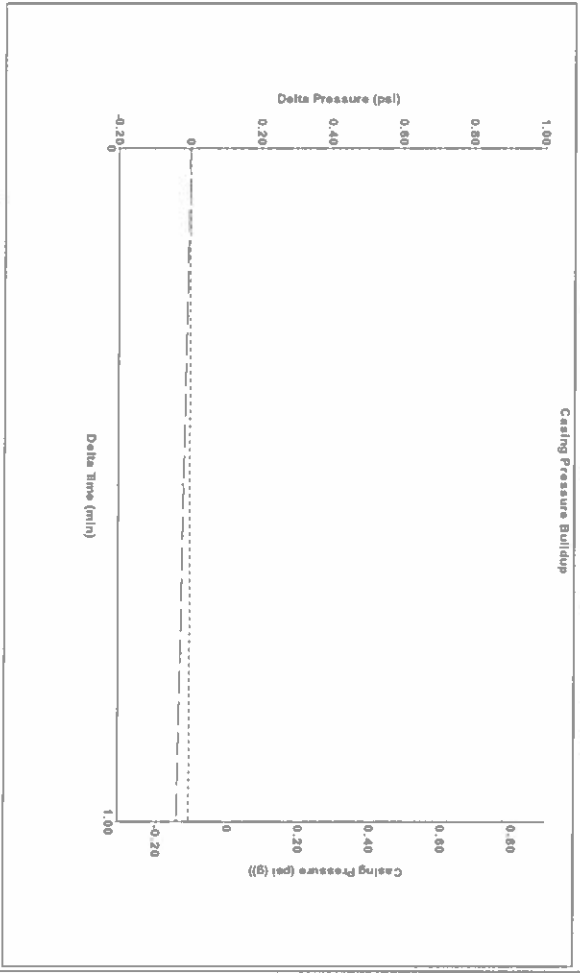


Analysis Method: Automatic

Group: SUBLETTE Well: NLV 4-1 (acquired on: 04/13/22 13:22:10)

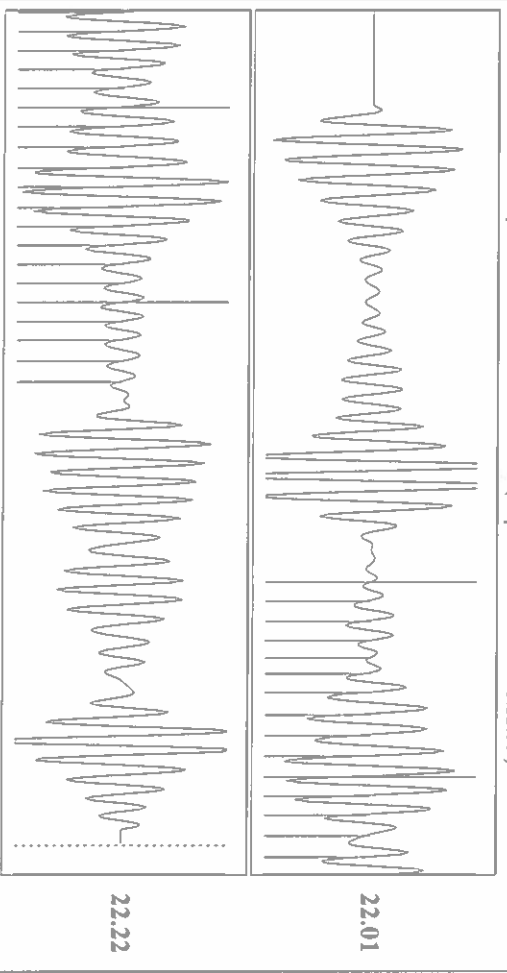
Production Current	Potential	Casing Pressure	Producing
Oil -*	-* BB/L/D	-0.1 psi (g)	Pump Intake
Water -*	-* BB/L/D	Casing Pressure Buildup	-* psi (g)
Gas -*	-* Mscf/D	-0.0 psi	Producing BHP
IPR Method	Vogel	Gas/Liquid Interface Pressure	149.8 psi (g)
PBHP/SBHP	-* -*	1.00 min	Static BHP
Production Efficiency	0.0	Gas/Liquid Interface Pressure	4.4 psi (g)
Oil 40 deg API		Liquid Level Depth	
Water 1.05 Sp.Gr./1120		3917.64 ft	
Gas 0.55 Sp.Gr./AIR		Pump Intake Depth	
Acoustic Velocity 1992.19 ft/s		-* -*	
		Formation Depth	
		4245.00 ft	
Formation Submergence			
Total Gaseous Liquid Column HT (TVD)			
Equivalent Gas Free Liquid HT (TVD)			
327 ft			
327 ft			
4/13/22			

Group: SUBLETTE Well: NLV 4-1 (acquired on: 04/13/22 13:22:10)



Change in Pressure -0.03 psi
 Change in Time 1.00 min
 PT16716
 Range 0 - 2 psi

Group: SUBLETTE Well: NLV 4-1 (acquired on: 04/13/22 13:22:10)



Acoustic Velocity 1992.19 ft/s
 Joints Per Second 22.1354 JIS/sec
 Depth to liquid level 3917.64 ft
 Automatic Collar Count Yes

Joints counted 34
 Joints to liquid level 87.0586
 Filter Width 20.2222
 Time to 1st Collar 1.324

Conservation Division
District Office No. 1
210 E. Frontview, Suite A
Dodge City, KS 67801



Phone: 620-682-7933
<http://kcc.ks.gov/>

Dwight D. Keen, Chair
Susan K. Duffy, Commissioner
Andrew J. French, Commissioner

Laura Kelly, Governor

April 14, 2022

Katherine McClurkan
Merit Energy Company, LLC
13727 Noel Road, Suite 1200
DALLAS, TX 75240-7362

Re: Temporary Abandonment
API 15-081-22202-00-00
NLV 4-1
NE/4 Sec.04-29S-33W
Haskell County, Kansas

Dear Katherine McClurkan:

"Your temporary abandonment (TA) application for the well listed above has been approved. In accordance with K.A.R. 82-3-111 the TA status of this well will expire 04/14/2023.

- * If you return this well to service or plug it, please notify the District Office.
- * If you sell this well you are required to file a Transfer of Operator form, T-1.
- * If the well will remain temporarily abandoned, you must submit a new TA application, CP-111, before 04/14/2023.

You may contact me at the number above if you have questions.

Very truly yours,

Michael Maier"