

KANSAS CORPORATION COMMISSION
OIL & GAS CONSERVATION DIVISION

TEMPORARY ABANDONMENT WELL APPLICATION

OPERATOR: License#
Name:
Address 1:
Address 2:
City: State: Zip:
Contact Person:
Phone:
Contact Person Email:
Field Contact Person:
Field Contact Person Phone:

API No. 15-
Spot Description:
Sec. Twp. S. R.
GPS Location: Lat, Long
Datum: NAD27, NAD83, WGS84
County: Elevation:
Lease Name: Well #:
Well Type: Oil, Gas, OG, WSW, Other
SWD Permit #: ENHR Permit #:
Gas Storage Permit #:
Spud Date: Date Shut-In:

Table with 7 columns: Conductor, Surface, Production, Intermediate, Liner, Tubing. Rows include Size, Setting Depth, Amount of Cement, Top of Cement, Bottom of Cement.

Casing Fluid Level from Surface: How Determined? Date:
Casing Squeeze(s): to w / sacks of cement, to w / sacks of cement. Date:
Do you have a valid Oil & Gas Lease? Yes No
Depth and Type: Junk in Hole at Tools in Hole at Casing Leaks: Yes No Depth of casing leak(s):
Type Completion: ALT. I ALT. II Depth of: DV Tool: w / sacks of cement Port Collar: w / sack of cement
Packer Type: Size: Inch Set at: Feet
Total Depth: Plug Back Depth: Plug Back Method:

Geological Date:

Table with 4 columns: Formation Name, Formation Top, Formation Base, Completion Information. Rows 1 and 2.

UNDER PENALTY OF PERJURY I HEREBY ATTEST THAT THE INFORMATION CONTAINED HEREIN IS TRUE AND CORRECT TO THE BEST OF MY KNOWLEDGE

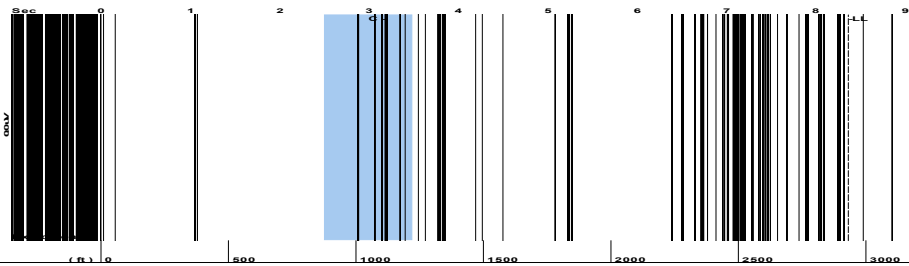
Submitted Electronically

Do NOT Write in This Space - KCC USE ONLY
Date Tested: Results: Date Plugged: Date Repaired: Date Put Back in Service:
Review Completed by: Comments:
TA Approved: Yes Denied Date:

Mail to the Appropriate KCC Conservation Office:

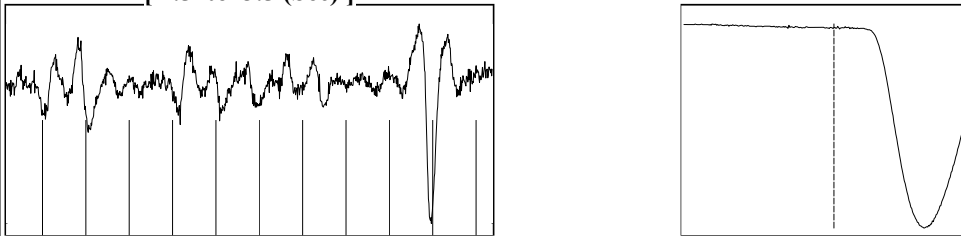
Table with 3 columns: District Office #, Address, Phone. Rows 1-4.

Group: MyWells Well: DUDLEY (36) 1-20 (acquired on: 04/13/22 14:18:41)



Filter Type High Pass Automatic Collar Count Yes Time 8.362 sec
 Manual Acoustic Velocity 711.56 ft/s Manual JTS/sec 11.2233 Joints 92.4545 Jts
 Depth 2930.81 ft

[2.5 to 3.5 (Sec)]



Analysis Method: Automatic

Group: MyWells Well: DUDLEY (36) 1-20 (acquired on: 04/13/22 14:18:41)

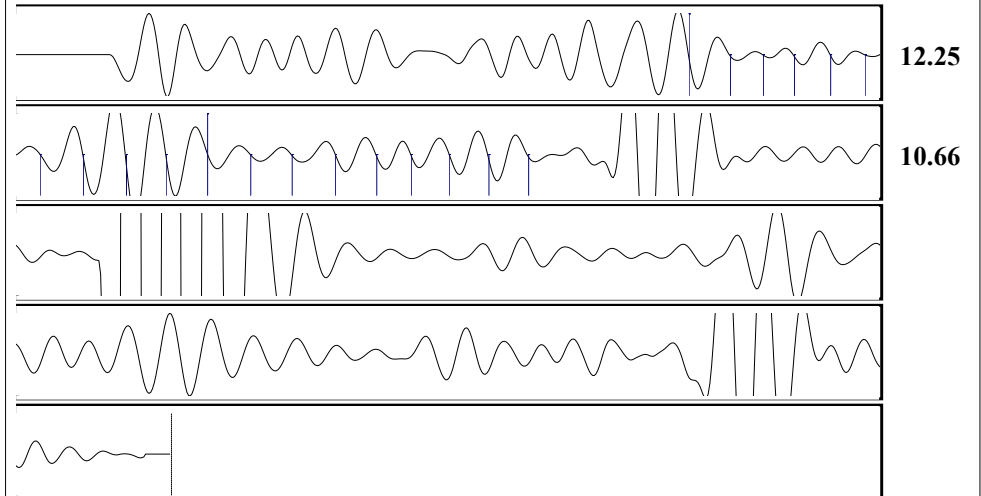
NO PRESSURE DATA AVAILABLE

Change in Pressure 0.00 psi PT12098
 Range 0 - ? psi
 Change in Time 0.00 min

Group: MyWells Well: DUDLEY (36) 1-20 (acquired on: 04/13/22 14:18:41)

Production Current	Potential	Casing Pressure	Producing
Oil -*-	-*- BBL/D	0.0 psi (g)	
Water -*-	-*- BBL/D	Casing Pressure Buildup	Annular Gas Flow
Gas -*-	-*- Mscf/D	-*- psi	-*- Mscf/D
		-*- min	% Liquid
IPR Method	Vogel	Gas/Liquid Interface Pressure	100 %
PBHP/SBHP	-*-	-*- psi (g)	
Production Efficiency	0.0	Liquid Level Depth	
		2930.81 ft	
Oil 40 deg.API		Pump Intake Depth	
Water 1.05 Sp.Gr.H2O		-*- ft	
Gas 1.26 Sp.Gr.AIR		Formation Depth	
Acoustic Velocity 700.983 ft/s		2987.00 ft	
Formation Submergence		Pump Intake	
Total Gaseous Liquid Column HT (TVD)	-*- ft	-*- psi (g)	
Equivalent Gas Free Liquid HT (TVD)	-*- ft	Producing BHP	
		-*- psi (g)	
Acoustic Test		Static BHP	
		-*- psi (g)	

Group: MyWells Well: DUDLEY (36) 1-20 (acquired on: 04/13/22 14:18:41)



Acoustic Velocity 700.983 ft/s Joints counted 18
 Joints Per Second 11.0565 jts/sec Joints to liquid level 92.4545
 Depth to liquid level 2930.81 ft Filter Width 9.22334 13.2233
 Automatic Collar Count Yes Time to 1st Collar 1.56 3.188

Conservation Division
District Office No. 1
210 E. Frontview, Suite A
Dodge City, KS 67801



Phone: 620-682-7933
<http://kcc.ks.gov/>

Dwight D. Keen, Chair
Susan K. Duffy, Commissioner
Andrew J. French, Commissioner

Laura Kelly, Governor

April 14, 2022

Octavio Morales
American Warrior, Inc.
PO BOX 399
GARDEN CITY, KS 67846-0399

Re: Temporary Abandonment
API 15-055-20629-00-00
DUDLEY (36) 1-20
NW/4 Sec.20-24S-32W
Finney County, Kansas

Dear Octavio Morales:

"Your temporary abandonment (TA) application for the well listed above has been approved. In accordance with K.A.R. 82-3-111 the TA status of this well will expire 04/14/2023.

- * If you return this well to service or plug it, please notify the District Office.
- * If you sell this well you are required to file a Transfer of Operator form, T-1.
- * If the well will remain temporarily abandoned, you must submit a new TA application, CP-111, before 04/14/2023.

You may contact me at the number above if you have questions.

Very truly yours,

Michael Maier"