

KANSAS CORPORATION COMMISSION
OIL & GAS CONSERVATION DIVISION

TEMPORARY ABANDONMENT WELL APPLICATION

OPERATOR: License#
Name:
Address 1:
Address 2:
City: State: Zip:
Contact Person:
Phone:
Contact Person Email:
Field Contact Person:
Field Contact Person Phone:

API No. 15-
Spot Description:
Sec. Twp. S. R.
GPS Location: Lat, Long
Datum: NAD27, NAD83, WGS84
County: Elevation:
Lease Name: Well #:
Well Type: Oil, Gas, OG, WSW, Other
SWD Permit #: ENHR Permit #:
Gas Storage Permit #:
Spud Date: Date Shut-In:

Table with 7 columns: Conductor, Surface, Production, Intermediate, Liner, Tubing. Rows include Size, Setting Depth, Amount of Cement, Top of Cement, Bottom of Cement.

Casing Fluid Level from Surface: How Determined? Date:
Casing Squeeze(s): to w / sacks of cement, to w / sacks of cement. Date:
Do you have a valid Oil & Gas Lease? Yes No
Depth and Type: Junk in Hole at Tools in Hole at Casing Leaks: Yes No Depth of casing leak(s):
Type Completion: ALT. I ALT. II Depth of: DV Tool: w / sacks of cement Port Collar: w / sack of cement
Packer Type: Size: Inch Set at: Feet
Total Depth: Plug Back Depth: Plug Back Method:

Geological Data:

Table with 4 columns: Formation Name, Formation Top, Formation Base, Completion Information. Rows 1 and 2.

UNDER PENALTY OF PERJURY I HEREBY ATTEST THAT THE INFORMATION CONTAINED HEREIN IS TRUE AND CORRECT TO THE BEST OF MY KNOWLEDGE

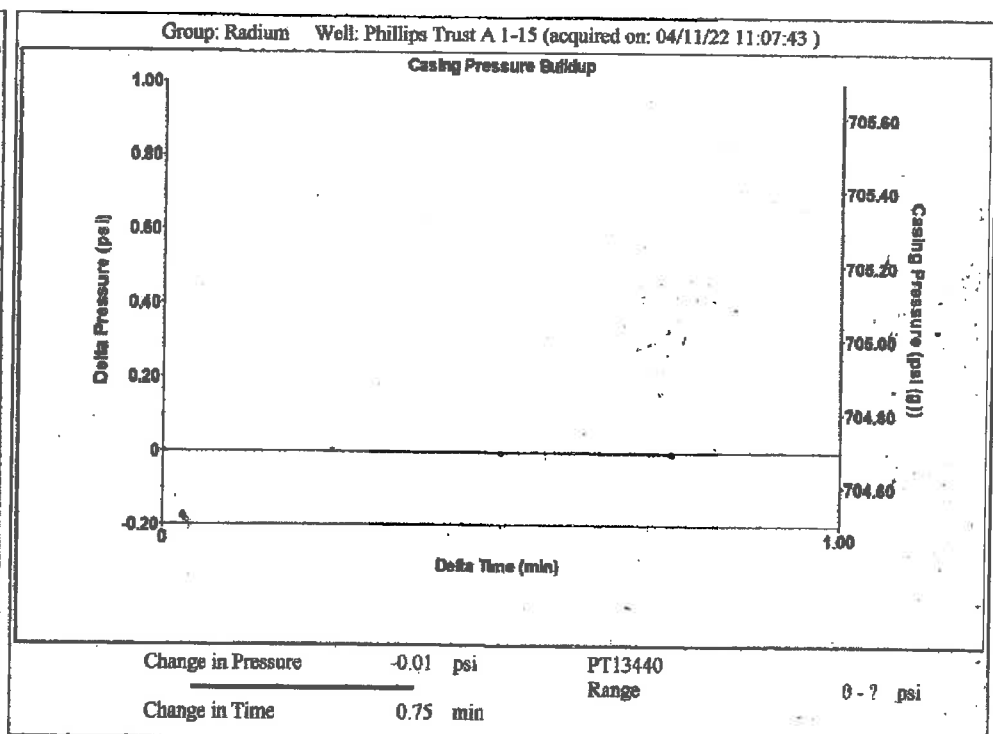
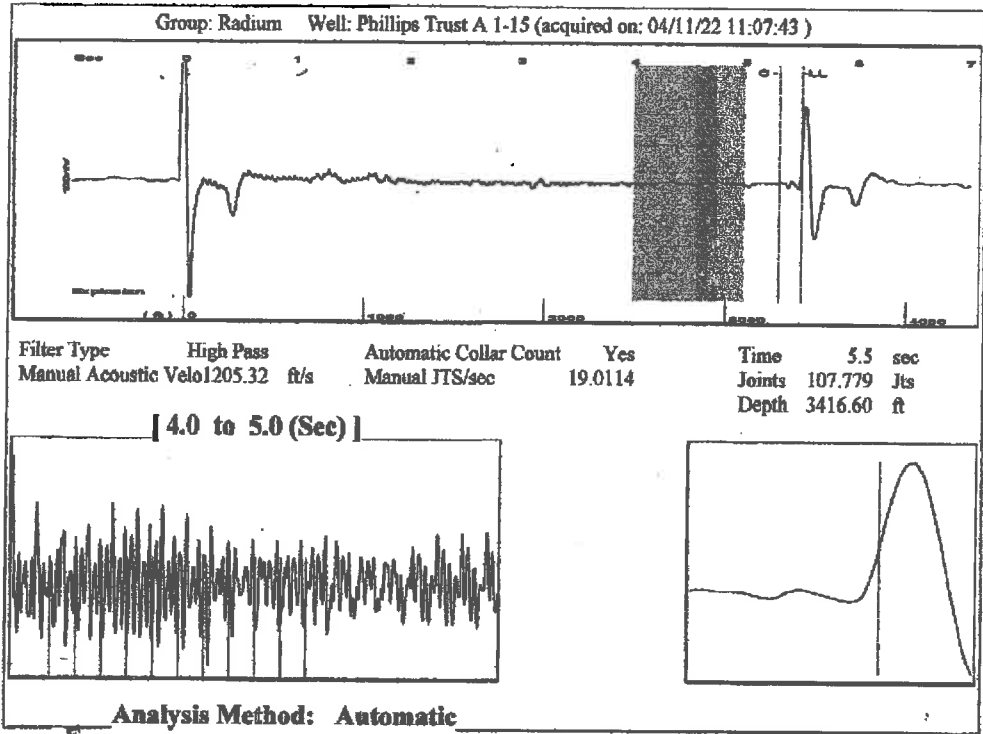
Submitted Electronically

Do NOT Write in This Space - KCC USE ONLY
Date Tested: Results: Date Plugged: Date Repaired: Date Put Back in Service:
Review Completed by: Comments:
TA Approved: Yes Denied Date:

Mail to the Appropriate KCC Conservation Office:

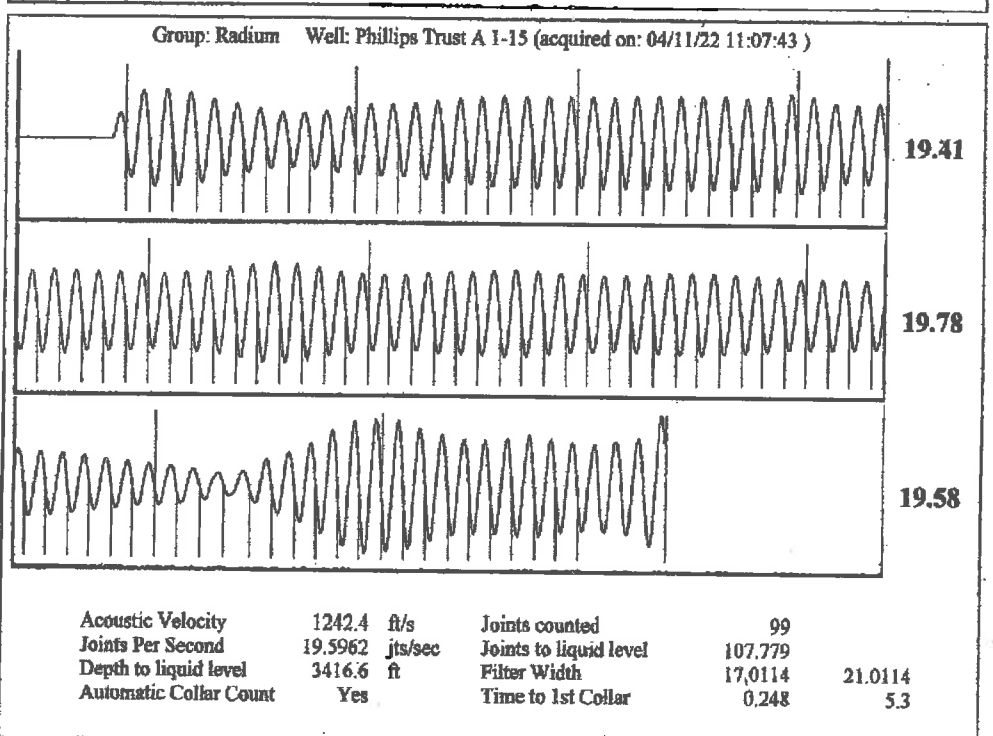
Table with 2 columns: Office Address, Phone. Rows for District Office #1, #2, #3, #4.

P. 3
 APR 11 2022 5:58PM HP LASERJET FAX



Group: Radium Well: Phillips Trust A 1-15 (acquired on: 04/11/22 11:07:43)

Production Current	Potential	Casing Pressure	Producing
Oil -*- BBL/D	-*- BBL/D	704.7 psi (g)	
Water +* BBL/D	-*- BBL/D	Casing Pressure Buildup	Annular Gas Flow
Gas ** Mscf/D	-*- Mscf/D	-0.005 psi	0 Mscf/D
		0.75 min	% Liquid 100 %
IPR Method Vogel		Gas/Liquid Interface Pressure	
PBHP/SBHP -*-		771.2 psi (g)	
Production Efficiency 0.0		Liquid Level Depth	
		3416.60 ft	
Oil 40 deg.API		Pump Intake Depth	
Water 1.05 Sp.Gr.H2O		-*- ft	
Gas 0.69 Sp.Gr.AIR		Formation Depth	
Acoustic Velocity 1242.4 ft/s		3510.00 ft	
Formation Submergence		Pump Intake	
Total Gaseous Liquid Column HT (TVD) 93 ft		-*- psi (g)	
Equivalent Gas Pres Liquid HT (TVD) 93 ft		Producing BHP	
		813.7 psi (g)	
Acoustic Test		Static BHP	
		-*- psi (g)	



Conservation Division
District Office No. 4
2301 E. 13th Street
Hays, KS 67601-2651



Phone: 785-261-6250
Fax: 785-625-0564
<http://kcc.ks.gov/>

Dwight D. Keen, Chair
Susan K. Duffy, Commissioner
Andrew J. French, Commissioner

Laura Kelly, Governor

April 14, 2022

Loveness Mpanje
F. G. Holl Company L.L.C.
9431 E CENTRAL STE 100
WICHITA, KS 67206-2563

Re: Temporary Abandonment
API 15-009-25394-00-00
PHILLIP TRUST A 1-15
NE/4 Sec.15-20S-14W
Barton County, Kansas

Dear Loveness Mpanje:

"Your temporary abandonment (TA) application for the well listed above has been approved. In accordance with K.A.R. 82-3-111 the TA status of this well will expire 04/14/2023.

- * If you return this well to service or plug it, please notify the District Office.
- * If you sell this well you are required to file a Transfer of Operator form, T-1.
- * If the well will remain temporarily abandoned, you must submit a new TA application, CP-111, before 04/14/2023.

You may contact me at the number above if you have questions.

Very truly yours,

RICHARD WILLIAMS"