

KANSAS CORPORATION COMMISSION
OIL & GAS CONSERVATION DIVISION

Form must be Typed
Form must be signed

TEMPORARY ABANDONMENT WELL APPLICATION

All blanks must be complete

OPERATOR: License#
Name:
Address 1:
Address 2:
City: State: Zip:
Contact Person:
Phone:
Contact Person Email:
Field Contact Person:
Field Contact Person Phone:

API No. 15-
Spot Description:
Sec. Twp. S. R.
feet from N / S Line of Section
feet from E / W Line of Section
GPS Location: Lat: , Long:
Datum: NAD27 NAD83 WGS84
County: Elevation: GL KB
Lease Name: Well #:
Well Type: (check one) Oil Gas OG WSW Other:
SWD Permit #: ENHR Permit #:
Gas Storage Permit #:
Spud Date: Date Shut-In:

Table with 7 columns: Conductor, Surface, Production, Intermediate, Liner, Tubing. Rows include Size, Setting Depth, Amount of Cement, Top of Cement, Bottom of Cement.

Casing Fluid Level from Surface: How Determined? Date:
Casing Squeeze(s): to w / sacks of cement, to w / sacks of cement. Date:
Do you have a valid Oil & Gas Lease? Yes No
Depth and Type: Junk in Hole at Tools in Hole at Casing Leaks: Yes No Depth of casing leak(s):
Type Completion: ALT. I ALT. II Depth of: DV Tool: w / sacks of cement Port Collar: w / sack of cement
Packer Type: Size: Inch Set at: Feet
Total Depth: Plug Back Depth: Plug Back Method:

Geological Data:

Table with 4 columns: Formation Name, Formation Top, Formation Base, Completion Information. Rows 1 and 2.

UNDER PENALTY OF PERJURY I HEREBY ATTEST THAT THE INFORMATION CONTAINED HEREIN IS TRUE AND CORRECT TO THE BEST OF MY KNOWLEDGE

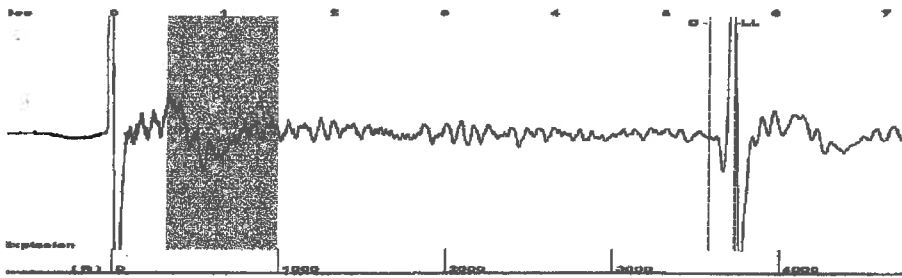
Submitted Electronically

Do NOT Write in This Space - KCC USE ONLY
Date Tested: Results: Date Plugged: Date Repaired: Date Put Back in Service:
Review Completed by: Comments:
TA Approved: Yes Denied Date:

Mail to the Appropriate KCC Conservation Office:

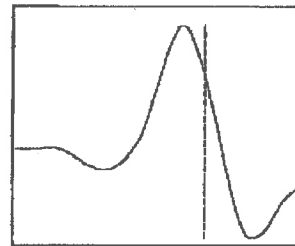
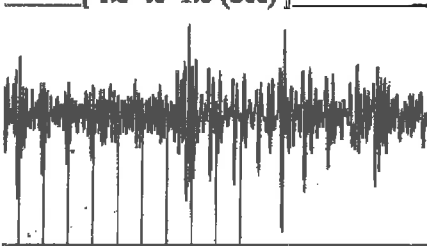
Table with 3 columns: District Office, Address, Phone. Rows for District Office #1, #2, #3, #4.

Group: Radium Well: Schmitt Family Trust 1-15 (acquired on: 04/18/22 11:02:14)



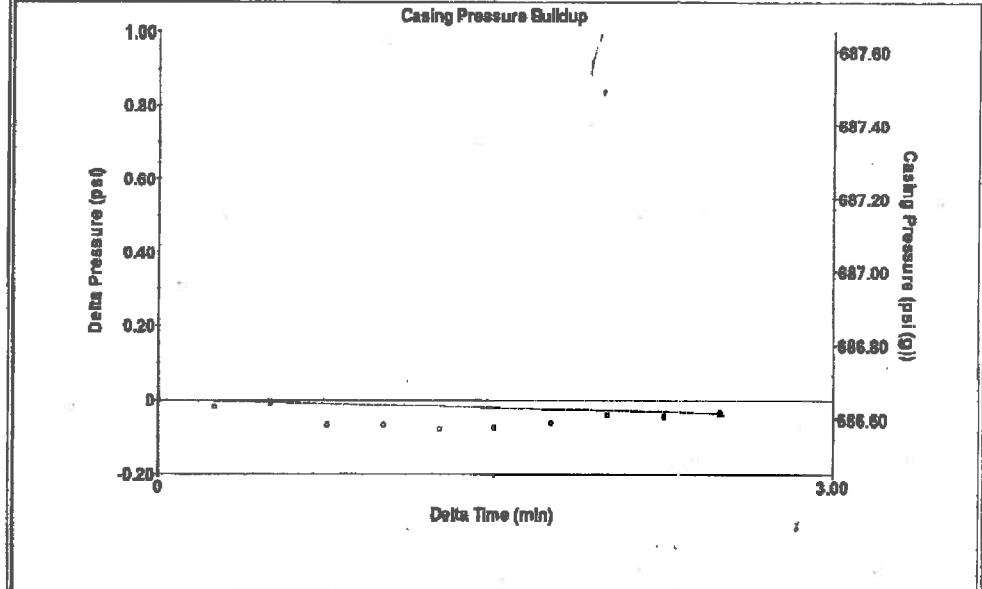
Type	High Pass	Automatic Collar Count	Yes	Time	5.633 sec
Acoustic Velocity	1289.68 ft/s	Manual JTS/sec	19.8413	Joints	114.865 Jts
				Depth	3733.13 ft

[0.5 to 1.5 (Sec)]



Analysis Method: Automatic

Group: Radium Well: Schmitt Family Trust 1-15 (acquired on: 04/18/22 11:02:14)



Change in Pressure	-0.04 psi	PT13440	
		Range	0 - ? psi
Change in Time	2.50 min		

Group: Radium Well: Schmitt Family Trust 1-15 (acquired on: 04/18/22 11:02:14)

Current	Potential	Casing Pressure	Producing
-*-	-*- BBL/D	686.7 psi (g)	
r -*-	-*- BBL/D	Casing Pressure Buildup	
-*-	-*- Mscf/D	-0.037 psi	
		2.50 min	
Method	Vogel	Gas/Liquid Interface Pressure	Annular Gas Flow
P/SBHP	-*-	750.1 psi (g)	0 Mscf/D
Production Efficiency	0.0		% Liquid
			100 %
40 deg.API		Liquid Level Depth	
r 1.05 Sp.Gr.H2O		3733.13 ft	
0.64 Sp.Gr.AIR		Pump Intake Depth	
		3832.00 ft	
Acoustic Velocity	1325.45 ft/s	Formation Depth	
		3704.00 ft	

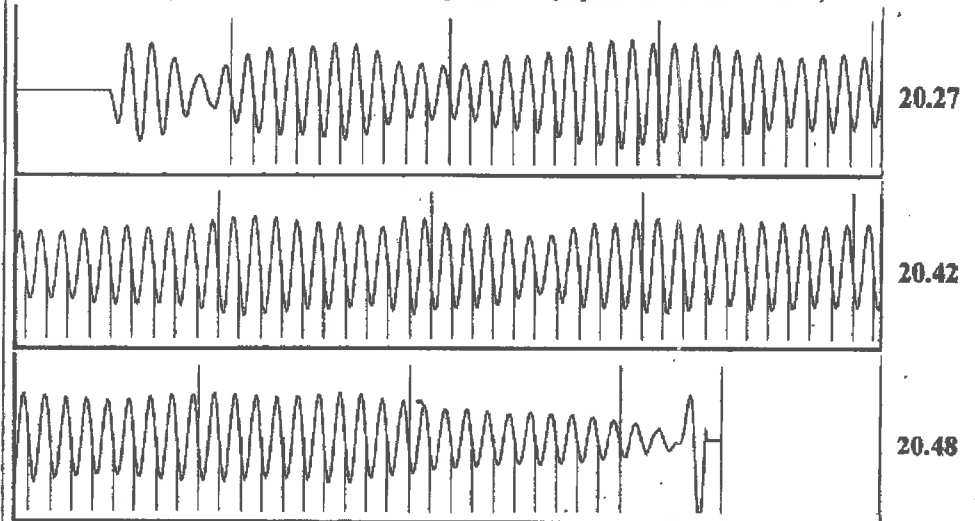


Pump Intake	781.6 psi (g)
Producing BHP	749.6 psi (g)
Static BHP	-*- psi (g)

Production Submergence	
Gaseous Liquid Column HT (TVD)	99 ft
Equivalent Gas Free Liquid HT (TVD)	99 ft

Acoustic Test

Group: Radium Well: Schmitt Family Trust 1-15 (acquired on: 04/18/22 11:02:14)



Acoustic Velocity	1325.45 ft/s	Joints counted	100
Joints Per Second	20.3915 jts/sec	Joints to liquid level	114.865
Depth to liquid level	3733.13 ft	Filter Width	17.8413
Automatic Collar Count	Yes	Time to 1st Collar	0.496
			21.8413
			5.4

Conservation Division
District Office No. 4
2301 E. 13th Street
Hays, KS 67601-2651



Phone: 785-261-6250
Fax: 785-625-0564
<http://kcc.ks.gov/>

Dwight D. Keen, Chair
Susan K. Duffy, Commissioner
Andrew J. French, Commissioner

Laura Kelly, Governor

April 20, 2022

Margery L. Nagel
F. G. Holl Company L.L.C.
9431 E CENTRAL STE 100
WICHITA, KS 67206-2563

Re: Temporary Abandonment
API 15-009-25804-00-00
SCHMITT FAMILY TRUST 1-15
SW/4 Sec.15-20S-15W
Barton County, Kansas

Dear Margery L. Nagel:

"Your temporary abandonment (TA) application for the well listed above has been approved. In accordance with K.A.R. 82-3-111 the TA status of this well will expire 04/20/2023.

- * If you return this well to service or plug it, please notify the District Office.
- * If you sell this well you are required to file a Transfer of Operator form, T-1.
- * If the well will remain temporarily abandoned, you must submit a new TA application, CP-111, before 04/20/2023.

You may contact me at the number above if you have questions.

Very truly yours,

RICHARD WILLIAMS"