

KANSAS CORPORATION COMMISSION
OIL & GAS CONSERVATION DIVISION

Form must be Typed
Form must be signed

TEMPORARY ABANDONMENT WELL APPLICATION

All blanks must be complete

OPERATOR: License#
Name:
Address 1:
Address 2:
City: State: Zip:
Contact Person:
Phone:
Contact Person Email:
Field Contact Person:
Field Contact Person Phone:

API No. 15-
Spot Description:
Sec. Twp. S. R.
GPS Location: Lat: Long:
Datum: NAD27 NAD83 WGS84
County: Elevation:
Lease Name: Well #:
Well Type: Oil Gas OG WSW Other:
SWD Permit #: ENHR Permit #:
Gas Storage Permit #:
Spud Date: Date Shut-In:

Table with 7 columns: Conductor, Surface, Production, Intermediate, Liner, Tubing. Rows include Size, Setting Depth, Amount of Cement, Top of Cement, Bottom of Cement.

Casing Fluid Level from Surface: How Determined? Date:
Casing Squeeze(s): to w / sacks of cement, to w / sacks of cement. Date:
Do you have a valid Oil & Gas Lease? Yes No
Depth and Type: Junk in Hole at Tools in Hole at Casing Leaks: Yes No Depth of casing leak(s):
Type Completion: ALT. I ALT. II Depth of: DV Tool: w / sacks of cement Port Collar: w / sack of cement
Packer Type: Size: Inch Set at: Feet
Total Depth: Plug Back Depth: Plug Back Method:

Geological Date:

Table with 4 columns: Formation Name, Formation Top, Formation Base, Completion Information. Rows 1 and 2.

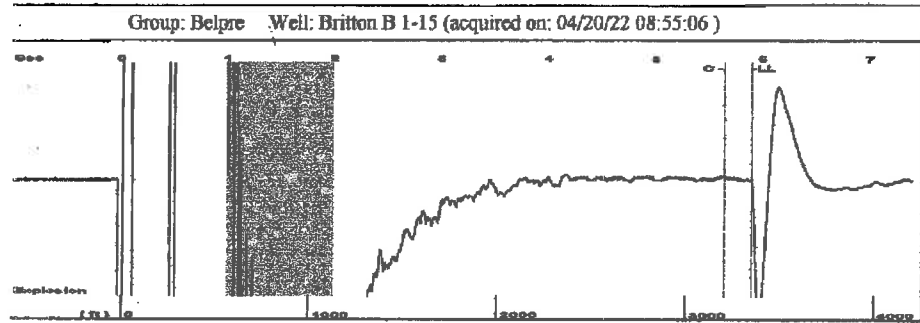
UNDER PENALTY OF PERJURY I HEREBY ATTEST THAT THE INFORMATION CONTAINED HEREIN IS TRUE AND CORRECT TO THE BEST OF MY KNOWLEDGE

Submitted Electronically

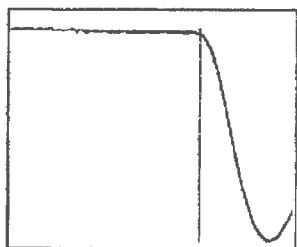
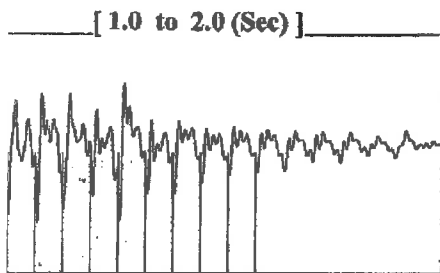
Do NOT Write in This Space - KCC USE ONLY
Date Tested: Results: Date Plugged: Date Repaired: Date Put Back in Service:
Review Completed by: Comments:
TA Approved: Yes Denied Date:

Mail to the Appropriate KCC Conservation Office:

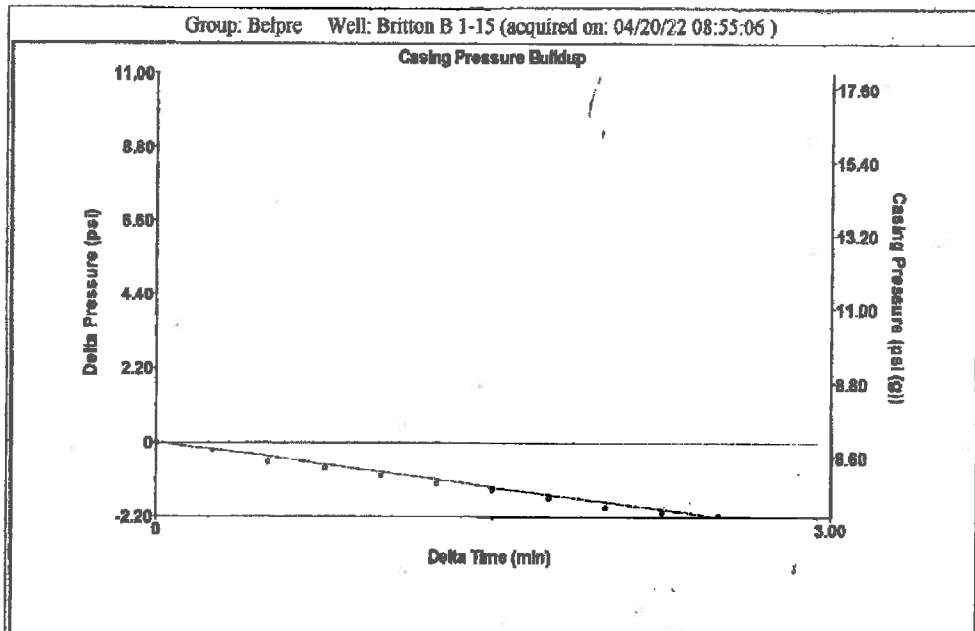
Table with 3 columns: District Office, Address, Phone. Rows for District Office #1, #2, #3, #4.



Type High Pass Automatic Collar Count Yes Time 5.899 sec
 al Acoustic Velocity 124.96 ft/s Manual JTS/sec 17.6991 Joints 105.418 Jts
 Depth 3350.18 ft



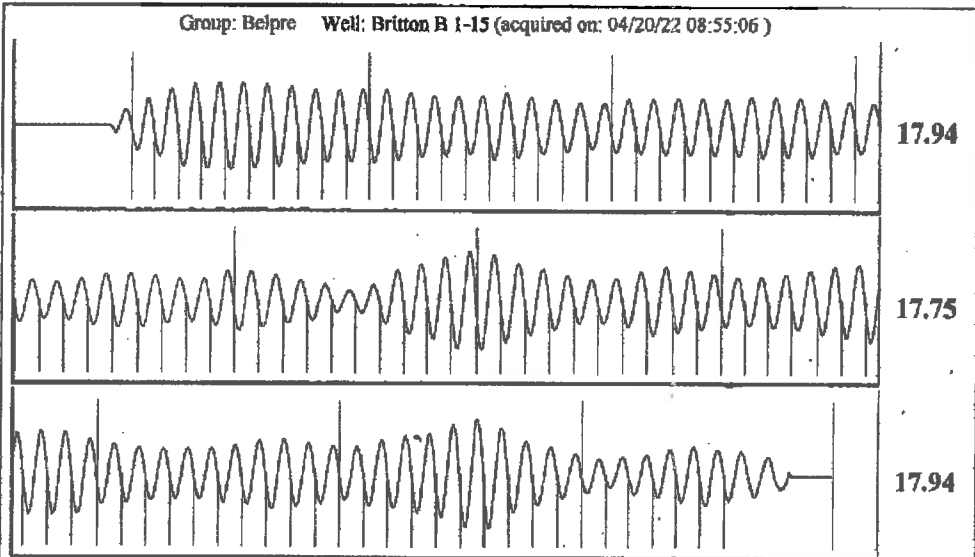
Analysis Method: Automatic



Change in Pressure -2.19 psi PT13440
 Change in Time 2.50 min Range 0-? psi

Group: Belpre Well: Britton B 1-15 (acquired on: 04/20/22 08:55:06)

uction Current	Potential	Casing Pressure	Producing
0	-* BBL/D	7.0 psi (g)	
er 0	-* BBL/D	Casing Pressure Buildup	
0.0	-* Mscf/D	-2.2 psi	
Method	Vogel	2.50 min	Annular
IP/SBHP	-*	Gas/Liquid Interface Pressure	Gas Flow
uction Efficiency	0.0	9.4 psi (g)	0 Mscf/D
		Liquid Level Depth	% Liquid
0 deg.API		3350.18 ft	100 %
er 0 Sp.Gr.H2O		Pump Intake Depth	
0.75 Sp.Gr.AIR		4387.00 ft	
oustic Velocity	1135.85 ft/s	Formation Depth	
		4367.00 ft	
nation Submergence		Pump Intake	
l Gaseous Liquid Column HT (TVD)	1037 ft	9.4 psi (g)	
ivalent Gas Free Liquid HT (TVD)	1037 ft	Producing BHP	
oustic Test		9.4 psi (g)	
		Static BHP	
		-14.7 psi (g)	



Acoustic Velocity 1135.85 ft/s Joints counted 96
 Joints Per Second 17.8704 jts/sec Joints to liquid level 105.418
 Depth to liquid level 3350.18 ft Filter Width 15.6991 19.6991
 Automatic Collar Count Yes Time to 1st Collar 0.272 5.644

April 21, 2022

Margery L. Nagel
F. G. Holl Company L.L.C.
9431 E CENTRAL STE 100
WICHITA, KS 67206-2563

Re: Temporary Abandonment
API 15-047-20243-00-00
BRITTON B 1
N/2 Sec.15-24S-17W
Edwards County, Kansas

Dear Margery L. Nagel:

"Your temporary abandonment (TA) application for the well listed above has been approved. In accordance with K.A.R. 82-3-111 the TA status of this well will expire 04/21/2023.

- * If you return this well to service or plug it, please notify the District Office.
- * If you sell this well you are required to file a Transfer of Operator form, T-1.
- * If the well will remain temporarily abandoned, you must submit a new TA application, CP-111, before 04/21/2023.

You may contact me at the number above if you have questions.

Very truly yours,

Michael Maier"