

KANSAS CORPORATION COMMISSION
OIL & GAS CONSERVATION DIVISION

Form must be Typed
Form must be signed

TEMPORARY ABANDONMENT WELL APPLICATION

All blanks must be complete

OPERATOR: License#
Name:
Address 1:
Address 2:
City: State: Zip:
Contact Person:
Phone:
Contact Person Email:
Field Contact Person:
Field Contact Person Phone:

API No. 15-
Spot Description:
Sec. Twp. S. R.
feet from N / S Line of Section
feet from E / W Line of Section
GPS Location: Lat: , Long:
Datum: NAD27 NAD83 WGS84
County: Elevation: GL KB
Lease Name: Well #:
Well Type: (check one) Oil Gas OG WSW Other:
SWD Permit #: ENHR Permit #:
Gas Storage Permit #:
Spud Date: Date Shut-In:

Table with 7 columns: Conductor, Surface, Production, Intermediate, Liner, Tubing. Rows include Size, Setting Depth, Amount of Cement, Top of Cement, Bottom of Cement.

Casing Fluid Level from Surface: How Determined? Date:
Casing Squeeze(s): to w / sacks of cement, to w / sacks of cement. Date:
Do you have a valid Oil & Gas Lease? Yes No
Depth and Type: Junk in Hole at Tools in Hole at Casing Leaks: Yes No Depth of casing leak(s):
Type Completion: ALT. I ALT. II Depth of: DV Tool: w / sacks of cement Port Collar: w / sack of cement
Packer Type: Size: Inch Set at: Feet
Total Depth: Plug Back Depth: Plug Back Method:

Geological Date:

Table with 4 columns: Formation Name, Formation Top, Formation Base, Completion Information. Rows 1 and 2.

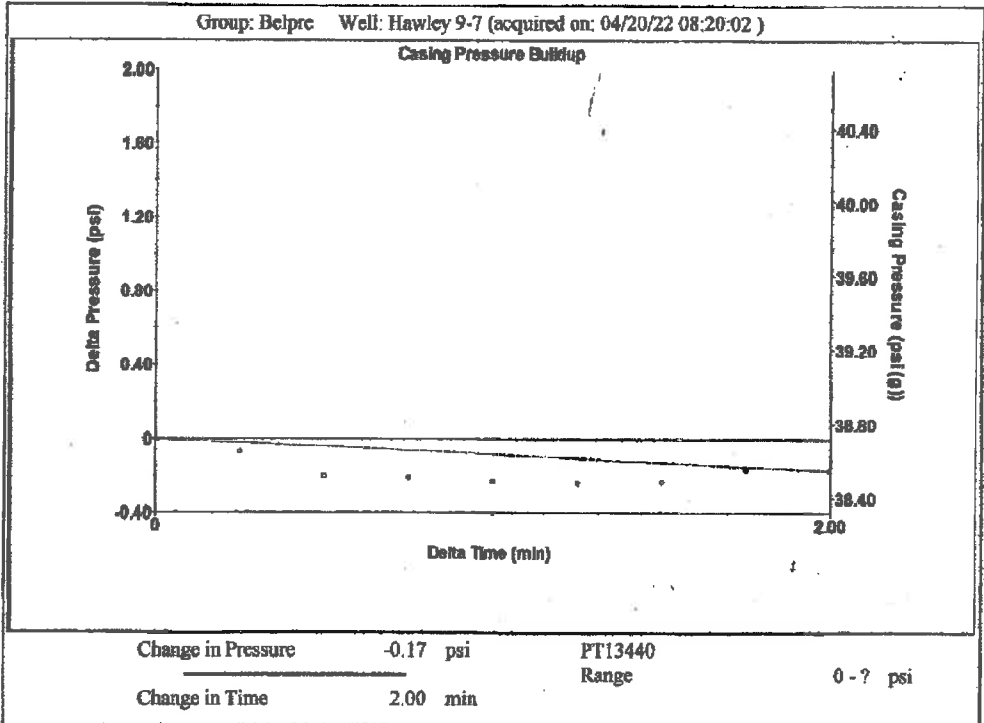
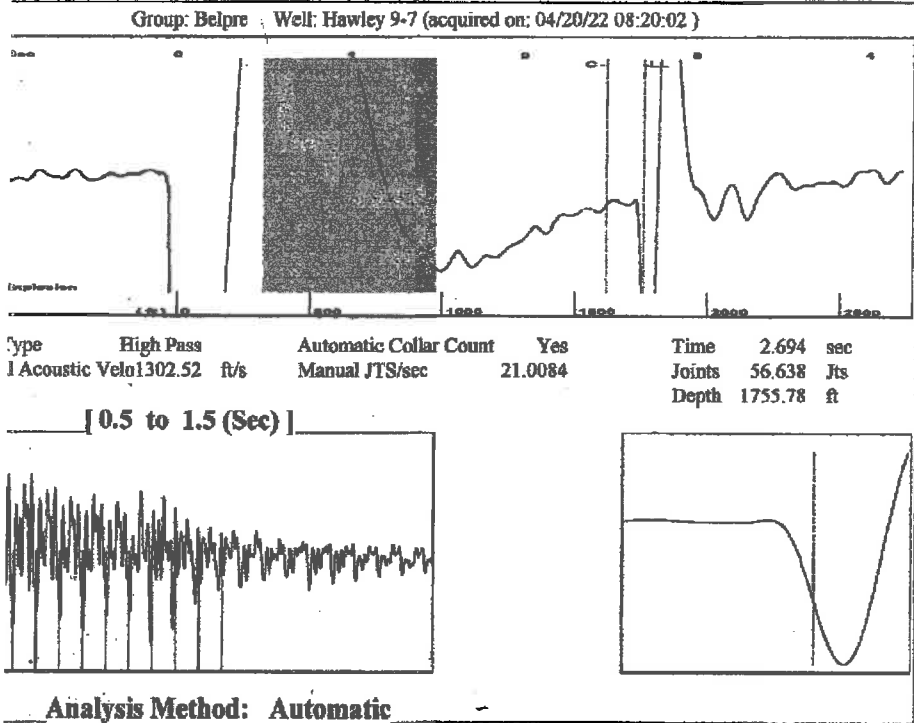
UNDER PENALTY OF PERJURY I HEREBY ATTEST THAT THE INFORMATION CONTAINED HEREIN IS TRUE AND CORRECT TO THE BEST OF MY KNOWLEDGE

Submitted Electronically

Do NOT Write in This Space - KCC USE ONLY
Date Tested: Results: Date Plugged: Date Repaired: Date Put Back in Service:
Review Completed by: Comments:
TA Approved: Yes Denied Date:

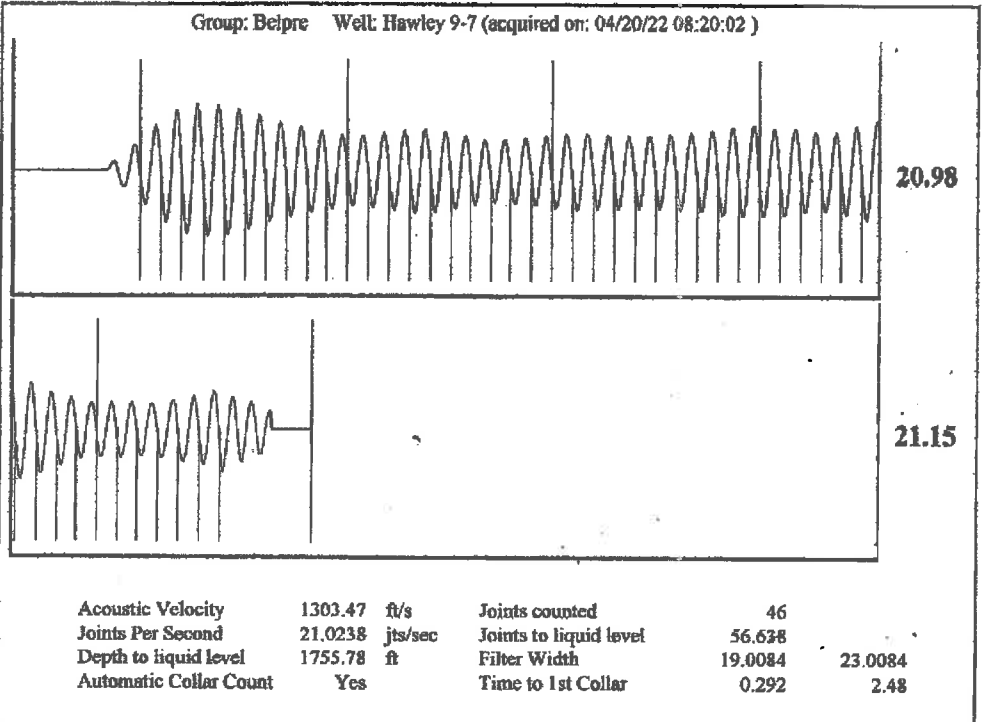
Mail to the Appropriate KCC Conservation Office:

Table with 2 columns: Office Address, Phone. Rows for District Office #1, #2, #3, #4.



Group: Belpre Well: Hawley 9-7 (acquired on: 04/20/22 08:20:02)

Current	Potential	Casing Pressure	Producing
-*- BBL/D	-*- BBL/D	38.7 psi (g)	
-*- BBL/D	-*- BBL/D	Casing Pressure Buildup	Annular Gas Flow
-*- Msc/D	-*- Msc/D	-0.2 psi	0 Msc/D
		2.00 min	% Liquid
		Gas/Liquid Interface Pressure	100 %
		41.0 psi (g)	
Method	Vogel	Liquid Level Depth	Pump Intake
P/SBHP	-*-	1755.78 ft	-*- psi (g)
Production Efficiency	0.0	Pump Intake Depth	Producing BHP
		-*- ft	1178.2 psi (g)
40 deg API		Formation Depth	Static BHP
1.05 Sp.Gr.H2O		4257.00 ft	-*- psi (g)
0.68 Sp.Gr.AIR			
Acoustic Velocity	1303.47 ft/s		
Production Submergence			
Gaseous Liquid Column HT (TVD)	2501 ft		
Equivalent Gas Free Liquid HT (TVD)	2501 ft		
Acoustic Test			



April 21, 2022

Margery L. Nagel
F. G. Holl Company L.L.C.
9431 E CENTRAL STE 100
WICHITA, KS 67206-2563

Re: Temporary Abandonment
API 15-047-21122-00-01
HAWLEY 9-7
NW/4 Sec.07-24S-16W
Edwards County, Kansas

Dear Margery L. Nagel:

"Your temporary abandonment (TA) application for the well listed above has been approved. In accordance with K.A.R. 82-3-111 the TA status of this well will expire 04/21/2023.

- * If you return this well to service or plug it, please notify the District Office.
- * If you sell this well you are required to file a Transfer of Operator form, T-1.
- * If the well will remain temporarily abandoned, you must submit a new TA application, CP-111, before 04/21/2023.

You may contact me at the number above if you have questions.

Very truly yours,

Michael Maier"